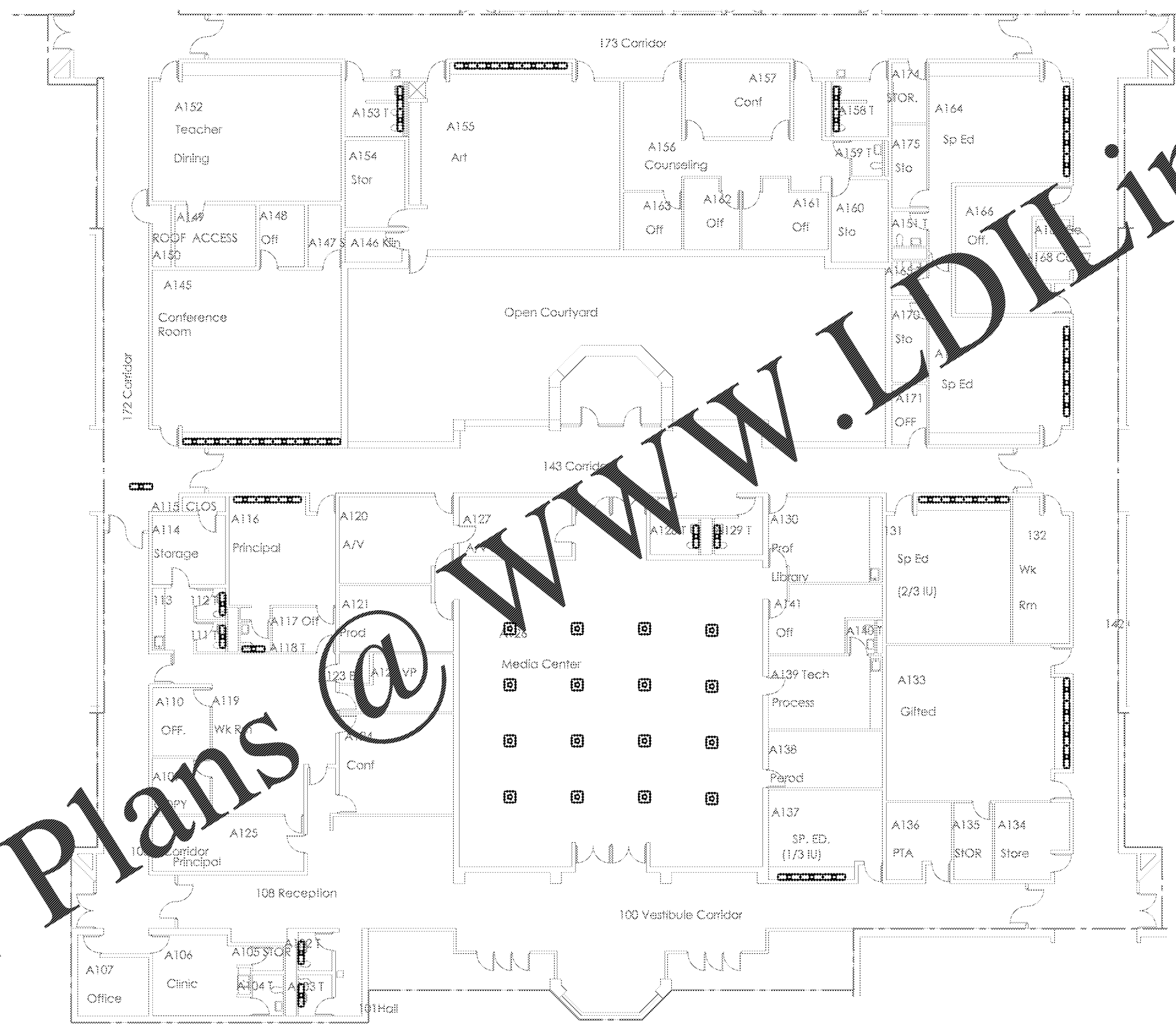


GENERAL NOTES:

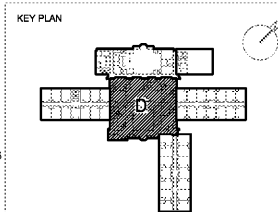
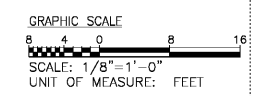
- 1. DEMOLISH LIGHTING FIXTURES INDICATED ON THIS SHEET. FIELD VERIFY EXACT LOCATIONS AND QUANTITIES.
- 2. MAINTAIN EXISTING LIGHTING CIRCUITS TO BE REUSED FOR NEW LIGHTING FIXTURES.
- 3. MAINTAIN CONTROL DEVICES AND WIRING DEVICES TO BE REUSED FOR NEW LIGHTING FIXTURE CONTROL.

DEMOLITION NOTES:

- 1. DEMOLISH FIVE EXISTING SURFACE MOUNTED CANOPY LIGHTS FROM THE ENTRY CANOPY. MAINTAIN EXISTING CIRCUIT FOR REUSE.



ELECTRICAL LIGHTING PLAN - SECTION D - DEMOLITION
SCALE: 1/8" = 1'-0"



CD

FULTON COUNTY SCHOOL SYSTEM
RIVER EVES ELEMENTARY SCHOOL - RENOVATION
9000 EVES ROAD
ROSWELL, GA 30076

PROJECT NO:	18046.00
50% CD'S	08/07/2016
PERMIT SET	09/29/2016
95% CD'S	11/08/2016
BID SET	12/09/2016

GEORGINA
REGISTERED PROFESSIONAL ENGINEER
JASON ALAN GREER

CONTRACT DOCUMENT
ISSUED FOR
CONSTRUCTION

SHEET TITLE
ELECTRICAL LIGHTING PLAN - SECTION D - DEMOLITION

SHEET NUMBER
ED201D