

GENERAL NOTES:

1. DEMOLISH LIGHTING FIXTURES INDICATED ON THIS SHEET. FIELD VERIFY EXACT LOCATIONS AND QUANTITIES.
2. MAINTAIN EXISTING LIGHTING CIRCUITS TO BE REUSED FOR NEW LIGHTING FIXTURES.
3. MAINTAIN CONTROL DEVICES AND WIRING DEVICES TO BE REUSED FOR NEW LIGHTING FIXTURE CONTROL.

DEMOLITION NOTES:

1. DEMOLISH EXISTING SURFACE MOUNTED CANOPY LIGHT FROM THE ENTRY CANOPY. MAINTAIN EXISTING CIRCUIT FOR REUSE.



www.cd...
 770.42...
 A 30060-03

FULTON COUNTY SCHOOL SYSTEM
**RIVER EVES ELEMENTARY SCHOOL -
 RENOVATION**
 9000 EVES ROAD
 ROSWELL, GA 30076

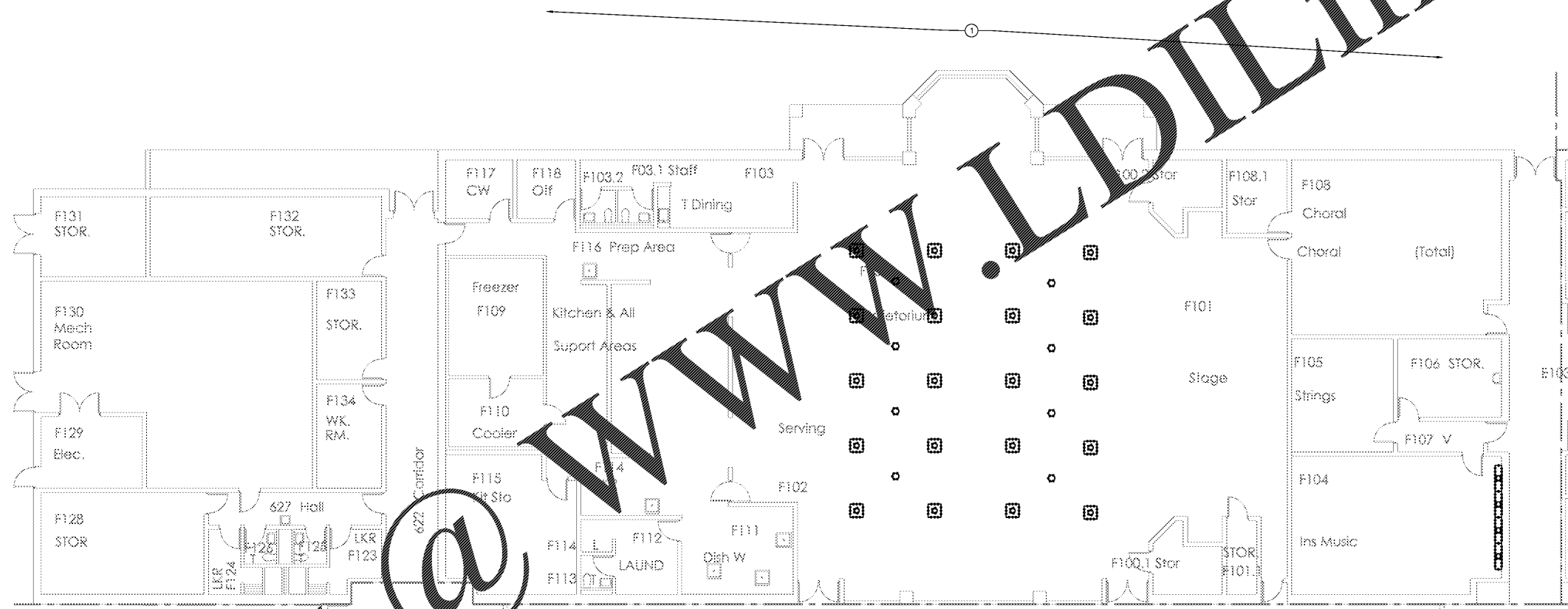
PROJECT NO: 18046.00	
50% CD'S	08/07/2016
PERMIT SET	09/29/2016
95% CD'S	11/08/2016
BID SET	12/09/2016



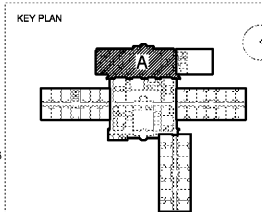
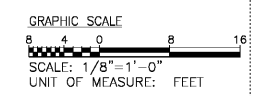
CONTRACT DOCUMENT
 ISSUED FOR
 CONSTRUCTION

SHEET TITLE
**ELECTRICAL LIGHTING PLAN -
 SECTION A -
 DEMOLITION**

SHEET NUMBER
ED201A



ELECTRICAL LIGHTING PLAN – SECTION A – DEMOLITION
 SCALE: 1/8" = 1'-0"



Order Plans