

GENERAL NOTES:

1. COORDINATE DEMOLITION WITH FIELD CONDITIONS AND MECHANICAL DRAWINGS.

DEMOLITION NOTES:

- ① DISCONNECT EXISTING CIRCUIT FOR SUSPENDED FAN COIL UNIT. MAINTAIN EXISTING CONDUIT AND CONDUCTORS FOR RECONNECTION OF NEW EQUIPMENT.
- ② DISCONNECT EXISTING CIRCUIT FOR ROOF MOUNTED EXHAUST FAN. MAINTAIN EXISTING CONDUIT AND CONDUCTORS FOR RECONNECTION OF NEW EQUIPMENT.
- ③ DISCONNECT EXISTING CIRCUIT FOR BOILER. MAINTAIN EXISTING CONDUIT AND CONDUCTORS FOR RECONNECTION OF NEW EQUIPMENT.
- ④ DISCONNECT EXISTING CIRCUIT FOR EXISTING PUMP. MAINTAIN EXISTING CONDUIT AND CONDUCTORS FOR RECONNECTION OF NEW EQUIPMENT.
- ⑤ DISCONNECT TWO EXISTING CIRCUITS FOR AIR COOLED CHILLERS. DEMOLISH EXISTING STARTER/DRIVER. MAINTAIN EXISTING CONDUIT AND CONDUCTORS FOR RECONNECTION OF NEW EQUIPMENT.
- ⑥ DISCONNECT EXISTING CIRCUIT FOR ELECTRIC UNIT HEATER. MAINTAIN EXISTING CONDUIT AND CONDUCTORS FOR RECONNECTION OF NEW EQUIPMENT.
- ⑦ DEMOLISH EXISTING GENERATOR. MAINTAIN GAS PIPING FOR RECONNECTION. REFER TO SHEET E501 FOR DEMOLITION ONE-LINE DIAGRAM.
- ⑧ MAINTAIN EXISTING CIRCUIT FOR REUSE.



www.cd.com
 770.422.1111
 130000-0000
 130000-0000
 130000-0000
 130000-0000

FULTON COUNTY SCHOOL SYSTEM
RIVER EVES ELEMENTARY SCHOOL - RENOVATION
 9000 EVES ROAD
 ROSWELL, GA 30076

PROJECT NO:	18046.00
50% CD'S	08/07/2016
PERMIT SET	09/29/2016
95% CD'S	11/08/2016
BID SET	12/09/2016

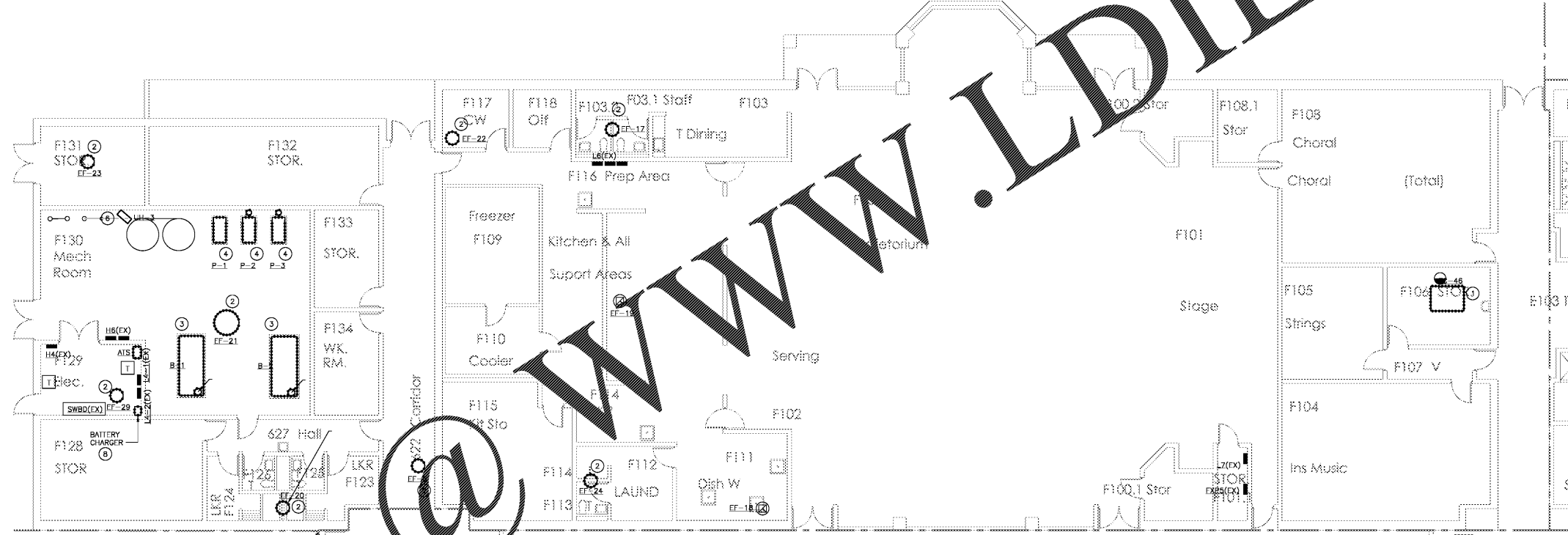


CONTRACT DOCUMENT
ISSUED FOR
CONSTRUCTION

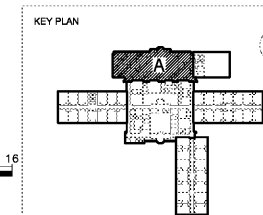
SHEET TITLE
ELECTRICAL POWER PLAN - SECTION A - DEMOLITION

SHEET NUMBER

ED101A



ELECTRICAL POWER PLAN – SECTION A – DEMOLITION
 SCALE: 1/8" = 1'-0"



Order Plans