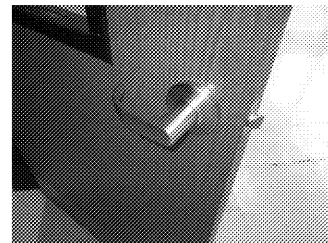


TYPICAL EXISTING CLASSROOM DOOR HARDWARE ON CORRIDOR SIDE



TYPICAL EXISTING CLASSROOM DOOR HARDWARE ON CLASSROOM SIDE

SIGNAGE & DOOR HARDWARE SCHEDULE					
RM NO.	SIGN LOCATION	DOOR HARDWARE	SIGNAGE TYPE	SIGNAGE TEXT	COMMENTS
108	RECEPTION		GS-2	A108 RECEPTION	PLACE ON VESTIBULE CORRIDOR 100 SIDE OF DOOR
111	T.		GS-3	MEN	
112	T.		GS-3	WOMEN	
113	BREAK		GS-2	A113 BREAK ROOM	
A102	T.		GS-3	WOMEN	
A103	T.		GS-3	MEN	
A104	T.		GS-3	RESTROOM	
A105	STOR.		GS-1	A105	
A106	CLINIC		GS-2	A106 CLINIC	
A107	OFFICE		GS-1	A107	
A109	COPY		GS-1	A109	
A110	OFF.		GS-1	A110	
A114	STOR.		GS-1	A114	
A116	PRINCIPAL		GS-1	A116	(x2)
A119	WORK ROOM		GS-1	A119	(x2)
A120	AV		GS-1	A120	
A121	PROD.		GS-1	A121	
A122	VP		GS-1	A122	
A124	CONFERENCE		GS-1	A124	
A125	PRINCIPAL		GS-1	A125	(x2)
A126	MEDIA CENTER		GS-2	A126 MEDIA CENTER	(x2)
A127	AV STOR.		GS-1	A127	
A128	T.		GS-3	GIRLS	
A129	T.		GS-3	BOYS	
A130	PROF. LIBR.		GS-1	A130	
A131	SP. ED.	SEE SPEC. (A131)	GS-1	A131	
A132	WK. RM.		GS-1	A132	
A133	GIFTED	SEE SPEC. (A133a, A133b)	GS-1	A133	(x2) SIGNAGE & DOOR HARDWARE
A134	STOR.		GS-1	A134	
A135	STOR.		GS-1	A135	
A136	PTA		GS-1	A136	
A137	SP. ED.	SEE SPEC. (A137)	GS-1	A137	
A138	PERIOD.		GS-1	A138	
A139	TECH. PROC.		GS-1	A139	
A141	OFFICE		GS-1	A141	
A145	CONFERENCE	SEE SPEC. (A145)	GS-1	A145	
A147	STOR.		GS-1	A147	
A148	OFF.		GS-1	A148	
A149	STOR.		GS-1	A149	
A150	ROOF ACCESS		GS-2	A150 ROOF ACCESS	
A152	TEACHER DINING	SEE SPEC. (A152)	GS-1	A152	
A153	T.		GS-3	GIRLS	
A155	ART	SEE SPEC. (A155a, A155b)	GS-2	A155 ART	(x2) SIGNAGE & DOOR HARDWARE
A156	COUNSELING		GS-2	A156 COUNSELING	(x2)
A157	CONF.		GS-1	A157	
A158	T.		GS-3	BOYS	
A159	T.		GS-3	RESTROOM	
A160	STOR.		GS-1	A160	
A161	OFF.		GS-1	A161	
A162	OFF.		GS-1	A162	
A163	OFF.		GS-1	A163	
A164	SP. ED.	SEE SPEC. (A164)	GS-1	A164	
A166	OFF.	SEE SPEC. (A166a, A166b)	GS-1	A166	(x2) SIGNAGE & DOOR HARDWARE
A167	ELEC.		GS-1	A167	
A168	CUST.		GS-2	A168 CUSTODIAL	
A169	SP. ED.		GS-1	A169	
A171	OFF.		GS-1	A171	
A174	STOR.		GS-1	A174	
E100	GYMNASIUM		GS-2	E100 GYMNASIUM	
E101	PE STOR.		GS-1	E101	
E102	STOR.		GS-1	E102	
E104	PE OFFICE		GS-1	E104	(x2) NO NEW SIGNAGE
E105	VEST.	SEE SPEC. (E105)			
E106	CUST.		GS-2	E106 CUSTODIAL	
E107	GIRLS		GS-3	GIRLS	
E108	BOYS		GS-3	BOYS	
E109	STORAGE		GS-1	E109	
F100	CAFETERIUM	SEE SPEC. (F100a, F100b)	GS-2	F100 CAFETERIUM	(x2)
F100.1	STOR.		GS-1	F100.1	
F100.2	STOR.		GS-1	F100.2	

SIGNAGE & DOOR HARDWARE SCHEDULE					
RM NO.	SIGN LOCATION	DOOR HARDWARE	SIGNAGE TYPE	SIGNAGE TEXT	COMMENTS
F101	STAGE		GS-2	F101 STAGE	
F101.1	STOR.		GS-1	F101.1	
F103	T. DINING		GS-2	F103 TEACHER DINING	
F103.1	T.		GS-3	MEN	VERIFY GENDER DESIGNATION IN FIELD
F103.2	T.		GS-3	WOMEN	VERIFY GENDER DESIGNATION IN FIELD
F104	INS. MUSIC	SEE SPEC. (F104)	GS-1	F104	
F105	STRINGS	SEE SPEC. (F105)	GS-1	F105	
F106	STOR.		GS-1	F106	
F107	V.		GS-1	F104	
F108	CHORAL	SEE SPEC. (F108a, F108b)	GS-1	F108	(x2) SIGNAGE & DOOR HARDWARE
F108.1	STOR.		GS-1	F108.1	
F123	LKR		GS-2	F123 LOCKER	
F124	LKR		GS-2	F124 LOCKER	
F125	T.		GS-3	MEN	VERIFY GENDER DESIGNATION IN FIELD
F126	T.		GS-3	WOMEN	VERIFY GENDER DESIGNATION IN FIELD
F127	2ND CLASSROOM		GS-1	P121	
F128	STOR.		GS-1	F128	
F129	ELEC.		GS-2	F129 ELECTRICAL	
F130	MECH. ROOM		GS-2	F130 MECHANICAL	
F132	STOR.		GS-1	F132	
F133	STOR.		GS-1	F133	
F134	WK. RM.		GS-1	F134	
J101	4TH CLASSROOM	SEE SPEC. (J101)	GS-1	J101	
J103	4TH CLASSROOM	SEE SPEC. (J103)	GS-1	J103	
J105	4TH CLASSROOM	SEE SPEC. (J105)	GS-1	J105	
J107	4TH CLASSROOM	SEE SPEC. (J107)	GS-1	J107	
J111	CUST.		GS-2	J111 CUSTODIAL	
J112	4TH CLASSROOM	SEE SPEC. (J112)	GS-1	J112	
J114	4TH CLASSROOM	SEE SPEC. (J114)	GS-1	J114	
J116	5TH CLASSROOM	SEE SPEC. (J116)	GS-1	J116	
J118	5TH CLASSROOM	SEE SPEC. (J118)	GS-1	J118	
J120	STOR.		GS-1	J120	
J123	BOYS		GS-3	J123	
J124	GIRLS		GS-3	J124	
J125	5TH CLASSROOM	SEE SPEC. (J125)	GS-1	J125	
J127	5TH CLASSROOM	SEE SPEC. (J127)	GS-1	J127	
J129	5TH CLASSROOM	SEE SPEC. (J129)	GS-1	J129	
J135	4TH CLASSROOM	SEE SPEC. (J135)	GS-1	J135	
J137	5TH CLASSROOM	SEE SPEC. (J137)	GS-1	J137	
K101	1ST CLASSROOM	SEE SPEC. (K101)	GS-1	K101	
K104	1ST CLASSROOM	SEE SPEC. (K104)	GS-1	K104	
K107	1ST CLASSROOM	SEE SPEC. (K107)	GS-1	K107	
K110	1ST CLASSROOM	SEE SPEC. (K110)	GS-1	K110	
K113	CUST.		GS-2	K113 CUSTODIAL	
K114	1ST CLASSROOM	SEE SPEC. (K114)	GS-1	K114	
K117	1ST CLASSROOM	SEE SPEC. (K117)	GS-1	K117	
K120	1ST CLASSROOM	SEE SPEC. (K120)	GS-1	K120	
K129	KINDERGARTEN	SEE SPEC. (K129)	GS-1	K129	
K132	KINDERGARTEN	SEE SPEC. (K132)	GS-1	K132	
K135	KINDERGARTEN	SEE SPEC. (K135)	GS-1	K135	
K140	KINDERGARTEN	SEE SPEC. (K140)	GS-3	K140 STAFF	
K143	KINDERGARTEN	SEE SPEC. (K143)	GS-1	K143	
K146	KINDERGARTEN	SEE SPEC. (K146)	GS-1	K146	
K149	KINDERGARTEN	SEE SPEC. (K149)	GS-1	K149	
P101	2ND CLASSROOM	SEE SPEC. (P101)	GS-1	P101	
P104	2ND CLASSROOM	SEE SPEC. (P104)	GS-1	P104	
P107	2ND CLASSROOM	SEE SPEC. (P107)	GS-1	P107	
P110	2ND CLASSROOM	SEE SPEC. (P110)	GS-1	P110	
P115	2ND CLASSROOM	SEE SPEC. (P115)	GS-1	P115	
P118	2ND CLASSROOM	SEE SPEC. (P118)	GS-1	P118	
P121	2ND CLASSROOM	SEE SPEC. (P121)	GS-1	P121	
P139	3RD CLASSROOM	SEE SPEC. (P139)	GS-1	P139	
P142	3RD CLASSROOM	SEE SPEC. (P142)	GS-1	P142	
P145	3RD CLASSROOM	SEE SPEC. (P145)	GS-1	P145	
P148	3RD CLASSROOM	SEE SPEC. (P148)	GS-1	P148	
P150	T.		GS-3	P150 STAFF	
P153	3RD CLASSROOM	SEE SPEC. (P153)	GS-1	P153	
P156	3RD CLASSROOM	SEE SPEC. (P156)	GS-1	P156	
P159	3RD CLASSROOM	SEE SPEC. (P159)	GS-1	P159	

- GENERAL SIGNAGE NOTES**
- ALL ROOM SIGNAGE SHALL MEET THE REQUIREMENTS OF THE DEPARTMENT OF JUSTICE 2010 STANDARDS FOR ACCESSIBLE DESIGN (SECTION 703).
  - ALL SIGNAGE IS TO BE PLACED 4'-0" A.F.F. TO THE BOTTOM OF THE SIGNAGE UNLESS OTHERWISE INDICATED. SEE DETAIL A8A041.
  - ALL SIGNAGE IS TO BE MOUNTED ON WALL ADJACENT TO THE LATCH SIDE OF THE DOOR UNLESS OTHERWISE INDICATED.
  - PLACE NEW SIGN ON CORRIDOR SIDE OF DOOR UNLESS NOTED OTHERWISE.
  - REFER TO SIGNAGE ELEVATIONS A9A041 FOR SIGNAGE TYPE AND SPECIFICATION TO 142.01 FOR SIGNAGE MATERIALS AND FINISHES.
  - PROVIDE ONE ROOM SIGN FOR EACH ROOM. LISTED IN THE SIGNAGE SCHEDULE. ROOMS WITH MORE THAN ONE SIGNAGE NOTED IN THE 'COMMENTS' COLUMN OF THE SIGNAGE SCHEDULE.
  - ALL RESTROOMS RECEIVING NEW SIGNAGE ARE CONSIDERED ADA ACCESSIBLE UNLESS NOTED OTHERWISE.
  - EXISTING RED SIGNS MOUNTED TO EXISTING MECHANICAL AND ELECTRICAL ROOM DOORS SHALL REMAIN.
- GENERAL DOOR HARDWARE NOTES**
- LOCATIONS NOTED AS "SEE SPEC" IN THE DOOR HARDWARE COLUMN SHALL RECEIVE NEW DOOR HARDWARE AS SPECIFIED IN SECTION 08 7100. EXISTING DOOR HARDWARE SHALL REMAIN IN LOCATIONS WHERE THE DOOR HARDWARE COLUMN IS LEFT BLANK.
  - FOR DOORS RECEIVING HW SET #1: A NEW 20 MN RATED 3'-0" X 6'-8" SOLID CORE WOOD DOOR IS TO BE PROVIDED EXCEPT AT F108a PROVIDE 3'-0" X 6'-8" DOOR. EACH NEW DOOR TO MATCH EXISTING DOOR SIZE, RATNG. AND FINISH. ALL SIZES TO BE VERIFIED IN FIELD. MODIFY EXISTING FRAMES AS NEEDED FOR NEW HARDWARE. SEE DOOR ELEVATION A2A041. SEE SPEC SECTION 08 1416.
  - FOR DOORS RECEIVING HW SET #2: PREP EXISTING DOOR TO RECEIVE NEW HARDWARE AS INDICATED IN SPEC SECTION 08 7100. MODIFY EXISTING FRAMES AS NEEDED FOR NEW HARDWARE.
- GLAZING SCHEDULE**
- 1/4" CLEAR GLASS
  - 1/4" CLEAR FIRE GLASS - MATCH EXISTING RATING VERIFY IN FIELD
- NOTE:  
GLAZING IN ALL DOORS SHALL BE TEMPERED GLASS.

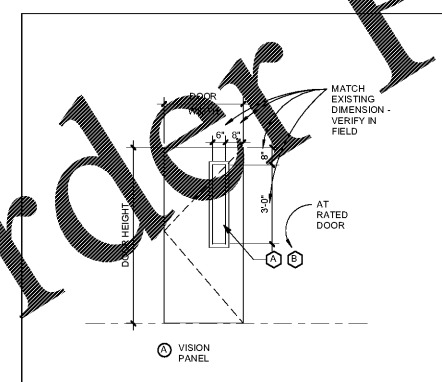
CDH  
 770.425.8888  
 www.cdhs.com  
 RIVER EVES ELEMENTARY SCHOOL - RENOVATIONS  
 9000 EVES ROAD, ROSWELL, GA 30076  
 FULTON COUNTY SCHOOL SYSTEM

PROJECT NO:	19046.00
50% CD'S	08/07/2018
PERMIT SET	09/20/2018
95% CD'S	11/08/2018
BD SET	2/03/2019

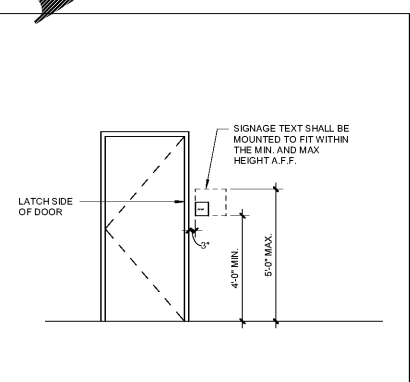


CONTRACT DOCUMENT  
ISSUED FOR CONSTRUCTION

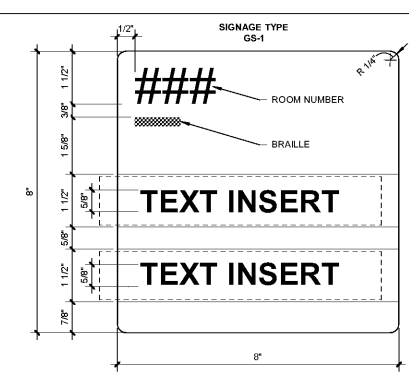
SHEET TITLE	ROOM SIGNAGE & DOOR HARDWARE
SHEET NUMBER	A041



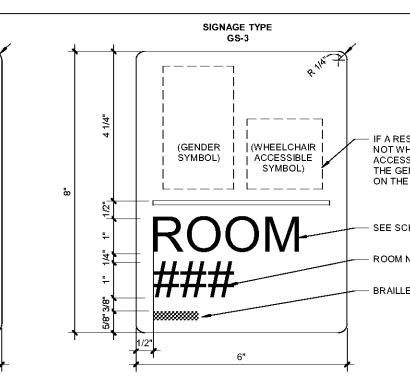
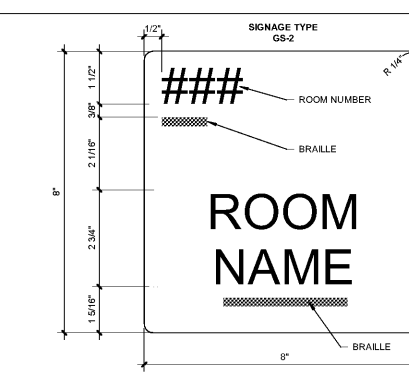
A2 DOOR ELEVATION  
A041 3/8" = 1'-0"



A6 SIGNAGE MOUNTING HEIGHTS  
A041 3/8" = 1'-0"



A9 SIGNAGE TYPES  
A041 6" = 1'-0"



Order Plans

WWW.IDIline.com