

Maintenance and Inspection Procedures
The following are the maintenance and inspection procedures that shall be used to maintain erosion and sediment controls:

Non-Storm Water Discharges
All non-storm water discharges shall be directed to the sediment basin prior to discharge from the site.

Spill Prevention
The following are the material management practices that shall be used to reduce the risk of spill or other accidental release of materials and substances to storm water runoff.

Product Specific Practices
The following are the product specific practices that shall be followed for products stored on-site:

Spill Control Practices
In addition to the good housekeeping and material management practices discussed in the previous sections of this plan, the following are the spill control practices that shall be followed for spill prevention and cleanup.

Spill Cleanup and Control Practices
Look, State and manufacturer's recommended methods for spill cleanup will be clearly posted and procedures will be made available to site personnel.

Spill Prevention Practices
All spills will be cleaned up immediately upon discovery. All spills will be reported as required by local, State and Federal regulations.

Spill Prevention Practices
The Contractor shall notify the licensed professional who prepared this plan if more than 100 gallons of petroleum based products are stored on-site.

Spill Prevention Practices
The Contractor shall notify the licensed professional who prepared this plan if more than 100 gallons of petroleum based products are stored on-site.

Spill Prevention Practices
The Contractor shall notify the licensed professional who prepared this plan if more than 100 gallons of petroleum based products are stored on-site.

Erosion and Sedimentation Controls
Stabilization Practices
Mulching - Contractor shall apply dry straw or hay or wood chip mulch to disturbed areas of a depth of two to three inches.

Structural Practices
Temporary Construction Entrance - A stabilized, stone aggregate construction entrance shall be constructed, as per the detail set forth in the Manual for Erosion and Sediment Control in Georgia, Latest Edition.

Stream Buffers (State Water Buffers) shall be appropriately flagged and protected. Solid buffers shall be identified with signage during the construction period.

Signage shall be placed at forty (40) foot intervals parallel with any State Water Buffer identified on the plan(s). Signs shall be weatherproof and shall be a minimum of 11" x 17".

Welland Protection Practices
Wellands, if present on site, are subject to U.S. Army Corps of Engineers (U.S.A.C.E.) regulations and restrictions and shall be clearly identified by flagging, fencing and/or signage at a maximum of fifty (50) foot intervals.

Welland Protection Practices
Wellands, if present on site, are subject to U.S. Army Corps of Engineers (U.S.A.C.E.) regulations and restrictions and shall be clearly identified by flagging, fencing and/or signage at a maximum of fifty (50) foot intervals.

Welland Protection Practices
Wellands, if present on site, are subject to U.S. Army Corps of Engineers (U.S.A.C.E.) regulations and restrictions and shall be clearly identified by flagging, fencing and/or signage at a maximum of fifty (50) foot intervals.

Welland Protection Practices
Wellands, if present on site, are subject to U.S. Army Corps of Engineers (U.S.A.C.E.) regulations and restrictions and shall be clearly identified by flagging, fencing and/or signage at a maximum of fifty (50) foot intervals.

Welland Protection Practices
Wellands, if present on site, are subject to U.S. Army Corps of Engineers (U.S.A.C.E.) regulations and restrictions and shall be clearly identified by flagging, fencing and/or signage at a maximum of fifty (50) foot intervals.

Welland Protection Practices
Wellands, if present on site, are subject to U.S. Army Corps of Engineers (U.S.A.C.E.) regulations and restrictions and shall be clearly identified by flagging, fencing and/or signage at a maximum of fifty (50) foot intervals.

Storm Water Controls
Storm Water Management
Curbs and gutters, storm sewers, overland flow and detention basins for the developed areas shall provide storm water pollution management after construction operations are completed.

Storm Water Runoff Quality Controls
The contractor shall conform to the phasing, sequencing, installation, inspection, maintenance, and stabilization requirements of the "Erosion, Sedimentation, and Pollution Control Plan".

Other Controls
Offsite Vehicle Tracking: A stabilized construction site has been provided to help reduce vehicle tracking of sediment.

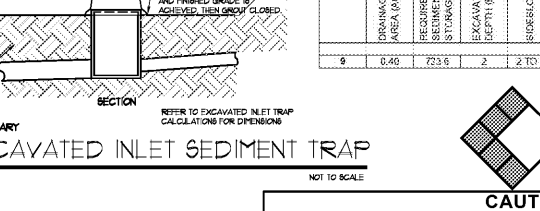
Recycling and Reuse Collection Centers (Waste Materials): The Contractor shall provide appropriate refuse collection centers, which allow for glass, paper, and plastic separation.

Hazardous Waste: All hazardous waste materials will be disposed of in the manner specified by the State and Federal regulations.

Sanitary Sewer: Sanitary sewer will be provided by Municipal Authority Septic System at the completion of this project.

Equipment Maintenance Area: Equipment maintenance area shall be clearly identified with signage.

Table with 2 columns: Drainage Basin 2 - Sd2-E #1 and Drainage Basin 2 - Sd2-E #2. Columns include: Drainage Area (AC), Required Storage (CF), Excavation Length (FT), Excavation Width (FT), Excavation Depth (FT), and Total Storage (CF).



CAUTION
THE UTILITIES SHOULD BE SHOWN FOR THE CONTRACTOR'S CONVENIENCE ONLY. THERE MAY BE OTHER UTILITIES NOT SHOWN ON THESE PLANS.

CDH
770-421-3000
www.cdhl.com

FULTON COUNTY SCHOOL SYSTEM
RIVER EVES ELEMENTARY SCHOOL - RENOVATIONS

9000 EVES RD
ROSWELL, GA 30076

PROJECT NO:
85% CD'S 08/07/2018
PERMIT SET 09/20/2018
95% CD'S 11/09/2018
LDP RESUBMITTAL 11/19/2018
BID SET 12/03/2018

CONTRACT DOCUMENT
ISSUED FOR CONSTRUCTION

BREEDLOVE LAND PLANNING
Landscape Architects • Civil Engineers
www.landplanning.net

SHEET TITLE
SITE WORK
CONSTRUCTION
DETAILS &
ES&PC NOTES

SHEET NUMBER
C400

811
Know what's below.
Call before you dig.
UTILITIES PROTECTION CENTER
THROUGHOUT GEORGIA
CALL 1-800-368-7463
REGULATORY
EXISTING UTILITIES BY THE CONTRACTOR FROM 18" DEEP OPERATIONS SHALL BE THE SOLE RESPONSIBILITY OF THE CONTRACTOR.

DO NOT DUPLICATE DRAWINGS WITHOUT PERMISSION