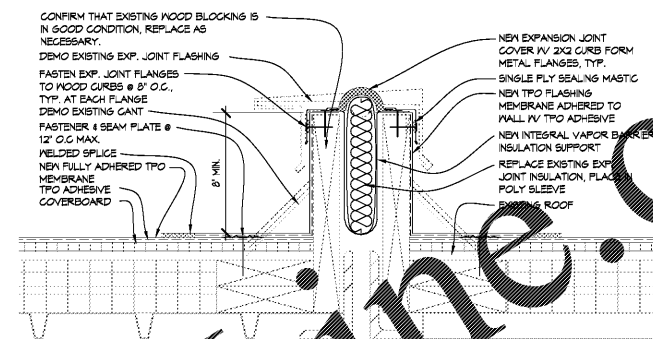
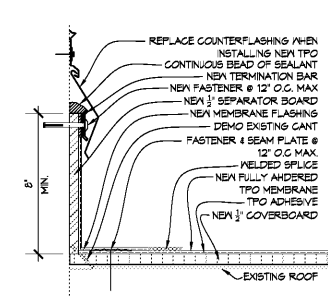


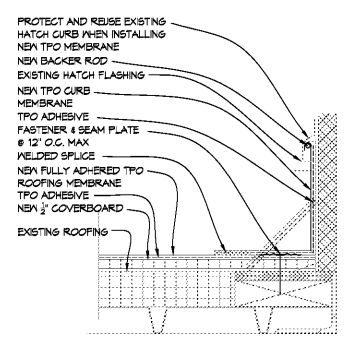
10 INSULATION FASTENING PATTERN @ METAL DECKING  
SCALE: 1-1/2"=1'-0"

- NOTES:
1. THE FOLLOWING REPRESENTS MINIMUM FASTENING PATTERN REQUIRED PER ROOF ZONE FOR A 4' X 8' COVER BOARD. ADHERE TO ROOFING SYSTEM MANUFACTURER REQUIREMENTS FOR ANY GIVEN ROOF ZONE. IF FASTENING PATTERN DEVIATES FROM SHOWN AND ROOFING SYSTEM MANUFACTURER FASTENING PATTERN UTILIZES AN EQUAL OR MORE NUMBER OF FASTENERS, IF ROOFING SYSTEM MANUFACTURER RECOMMENDED FASTENING PATTERN UTILIZES A FASTER NUMBER OF FASTENERS FOR ANY GIVEN ROOF ZONE, UTILIZE THE NUMBER OF FASTENERS AND PATTERN SHOWN.
  2. REFER TO SPECIFICATION AND / OR STRUCTURAL TO DETERMINE ROOF ZONES.
  3. ROOF INSULATION FASTENER SHALL BE A MINIMUM #12 FASTENERS AND SHALL PENETRATE THE TOP FLUTE OF THE DECKING A MINIMUM OF 1/2" INCHES.
  4. ROOF INSULATION PLATE SHALL BE A MINIMUM 3 INCH GALVALUME PLATE.
  5. FOLLOW THIS PATTERN AT A MINIMUM, UNLESS ROOFING MANUFACTURE RECOMMENDS ADDITIONAL.

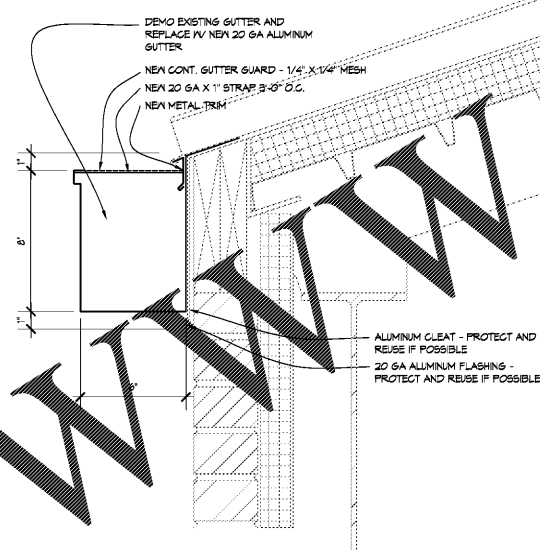
7 FLASHING DETAIL  
SCALE: 3"=1'-0"



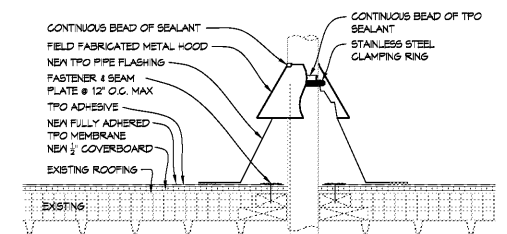
8 EXP. JOINT DETAIL  
SCALE: 3"=1'-0"



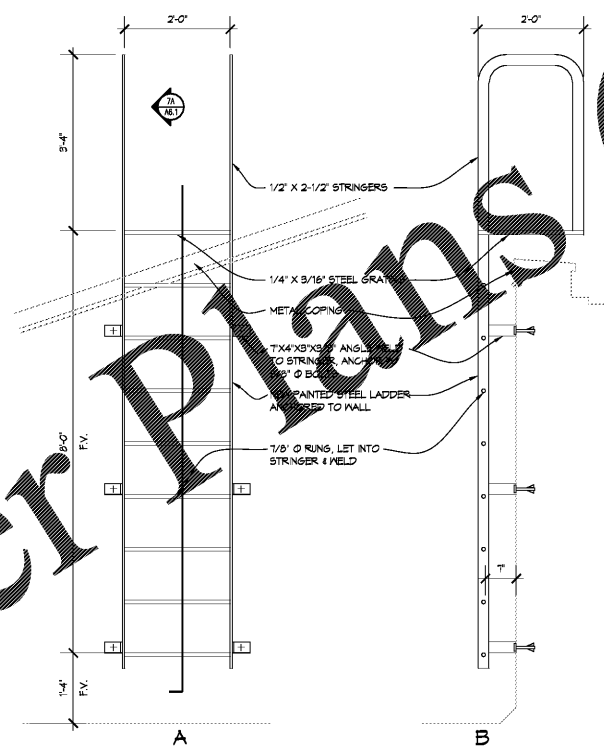
9 HATCH DETAIL  
SCALE: 3"=1'-0"



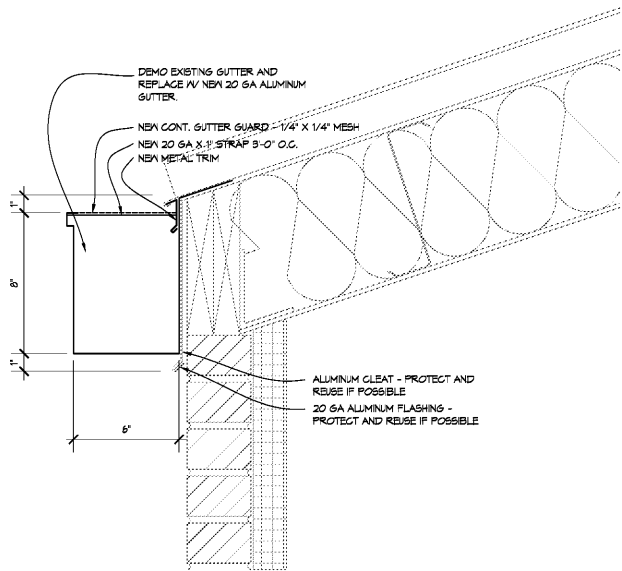
6 TYP. GUTTER DETAIL CLASSROOM WING  
SCALE: 3"=1'-0"



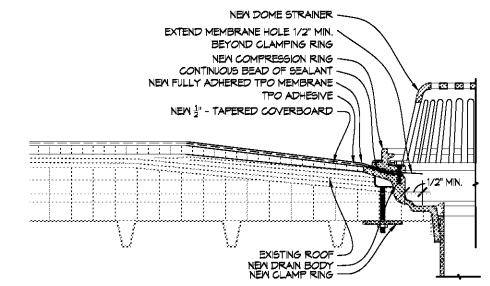
3 PIPE PENETRATION DETAIL  
SCALE: 1-1/2"=1'-0"



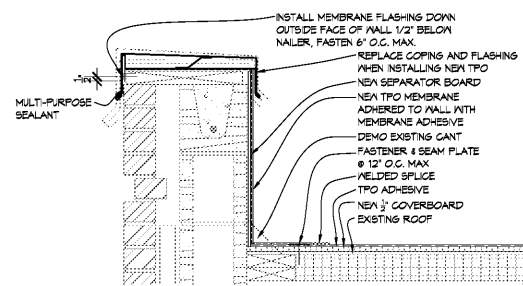
8 ROOF LADDER DETAIL  
SCALE: 3/4"=1'-0"



5 TYP. GUTTER DETAIL  
SCALE: 3"=1'-0"



2 ROOF DRAIN DETAIL  
SCALE: 3"=1'-0"



1 FLASHING DETAIL  
SCALE: 3"=1'-0"

COPYRIGHT CONSIDERED:  
This drawing is the property of Foreman Seeley Fountain Architecture and may not be used, copied or reprinted without expressed written permission.  
© 2016

Revisions

ROOFING RENOVATIONS FOR  
**RIVER EVES ELEMENTARY SCHOOL**  
9000 EVES RD.  
ROSWELL, GA 30076

FOREMAN | SEELEY | FOUNTAIN  
architect  
3601 Government Lake Drive, Suite 150, Peachtree Corners, Georgia, 30071  
(770) 729-8433 www.SFArchitecture.com

Sheet Title:  
DETAILS  
Drawn By: CJC  
Scale: AS NOTED  
Date: 12/10/2016  
Job No.: 1117  
Sheet No.:

A6.1

RELEASED FOR BID