

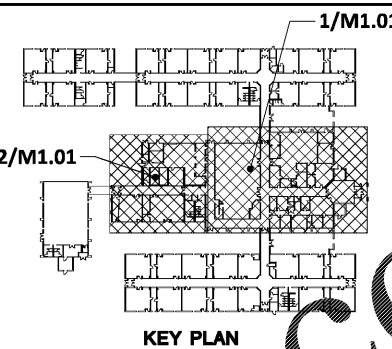
FRUETT, FORD & ASSOCIATES, INC.
 CONSULTING ENGINEERS
 100 BROAD STREET, SUITE 300
 ALBUQUERQUE, GEORGIA 30006
 Phone: 404-251-1000

THESE DOCUMENTS, AS INSTRUMENTS OF SERVICE, REMAIN THE PROPERTY OF THE ARCHITECT AND NO PART THEREOF MAY BE USED OR REPRODUCED IN ANY FORM WITHOUT WRITTEN PERMISSION.

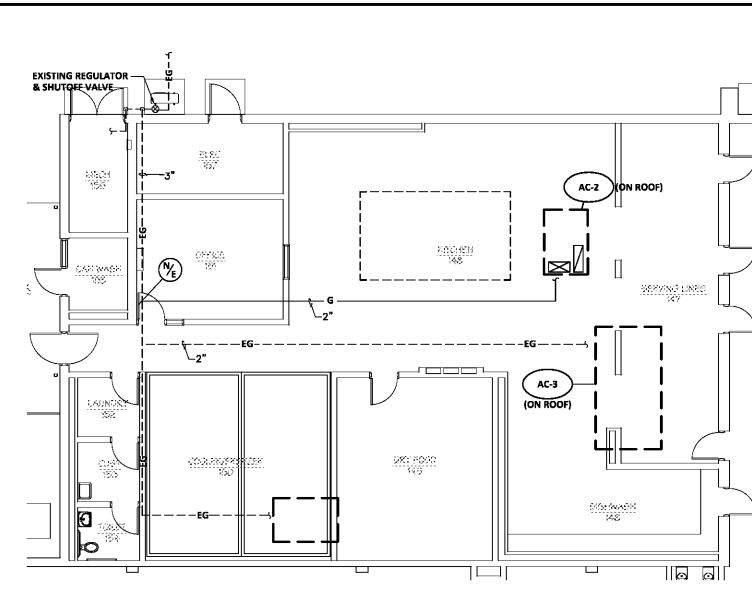
NO.	REVISIONS	DATE

CONSTRUCTION DOCUMENTS

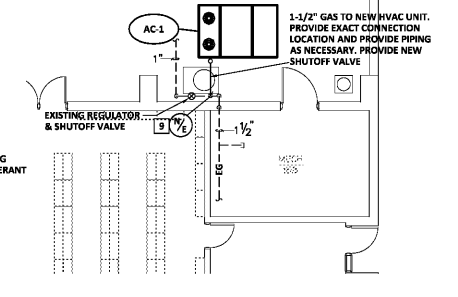
HVAC PLAN
 SCALE: 1/8" = 1'-0"
 SHEET
M2.01
 XXX OF 32
 FILE: 18.04
 DATE: 12/14/18



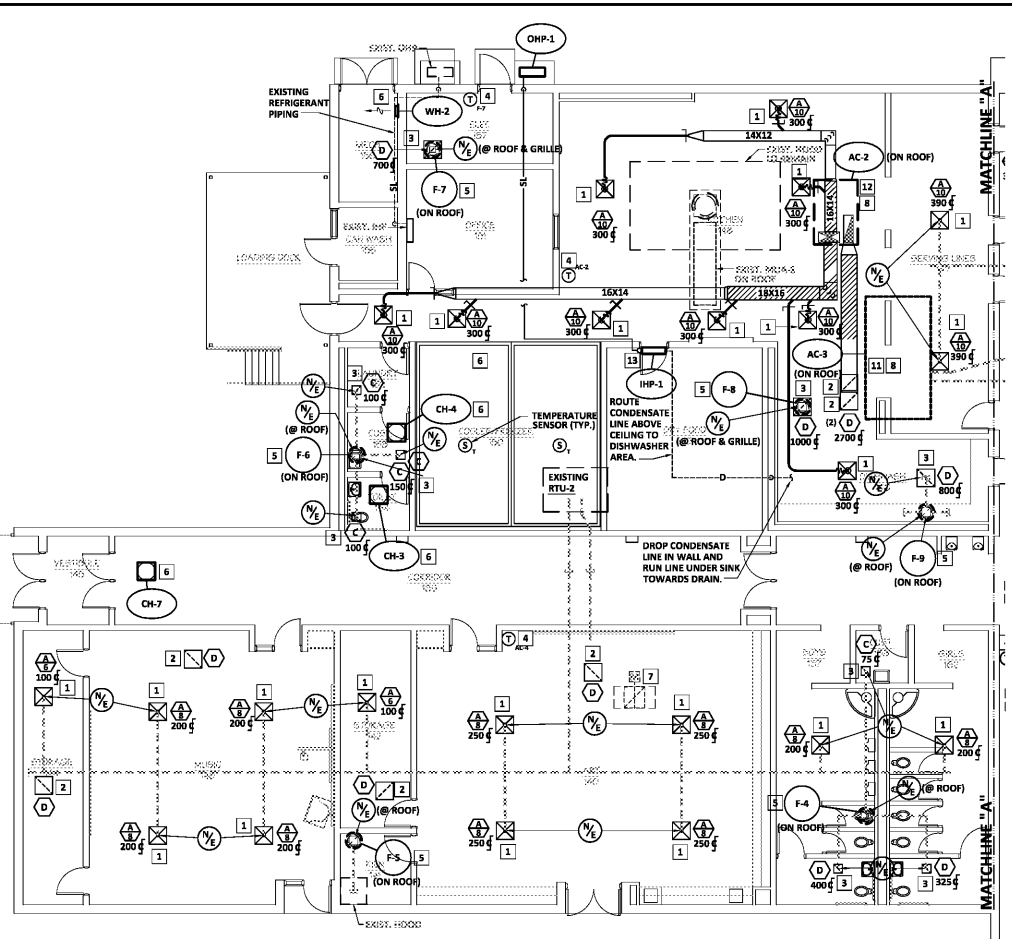
- KEY NOTES (THIS SHEET ONLY):**
- 1 PROVIDE NEW SUPPLY DIFFUSER IN EXISTING LOCATION.
 - 2 PROVIDE NEW RETURN GRILLE IN EXISTING LOCATION.
 - 3 PROVIDE NEW EXHAUST GRILLE IN EXISTING LOCATION.
 - 4 PROVIDE NEW THERMOSTAT IN EXISTING LOCATION.
 - 5 PROVIDE NEW FAN AND ASSOCIATED ACCESSORIES IN EXISTING LOCATION. PROVIDE TRANSITION AS REQUIRED TO CONNECT TO EXISTING RISER.
 - 6 PROVIDE ELECTRIC HEAT PUMP IN EXISTING LOCATION.
 - 7 EXISTING RELIEF DAMPER TO REMAIN. CLOSE RELIEF DAMPER AND SEAL DUCT OPENING IN PLENUM.
 - 8 CONNECT EXISTING GAS PIPING TO NEW HVAC EQUIPMENT. RECONNECT TYPE B VENT AND REPLACE EXISTING SHUTOFF VALVE WITH NEW SHUTOFF VALVE. FIELD VERIFY EXACT SIZE AND LOCATION.
 - 9 CONNECT NEW GAS PIPING TO EXISTING GAS PIPING. FIELD VERIFY EXACT SIZE AND LOCATION.
 - 10 ROUTE CONDENSATE LINE TO THE EDGE OF THE UNIT. DISCHARGE TOWARD PATIO DRAIN.
 - 11 VERIFY EXISTING EQUIPMENT RAILS TO SUPPORT NEW HVAC UNIT.
 - 12 MOUNT NEW HVAC UNIT ON ROOF CURB.
 - 13 PROVIDE LINE HIDE KIT AND CONDENSATE PUMP FOR NEW INDOOR HEAT PUMP.
 - 14 PURGE, CLEAN AND REUSE EXISTING REFRIGERANT PIPING WHERE POSSIBLE.



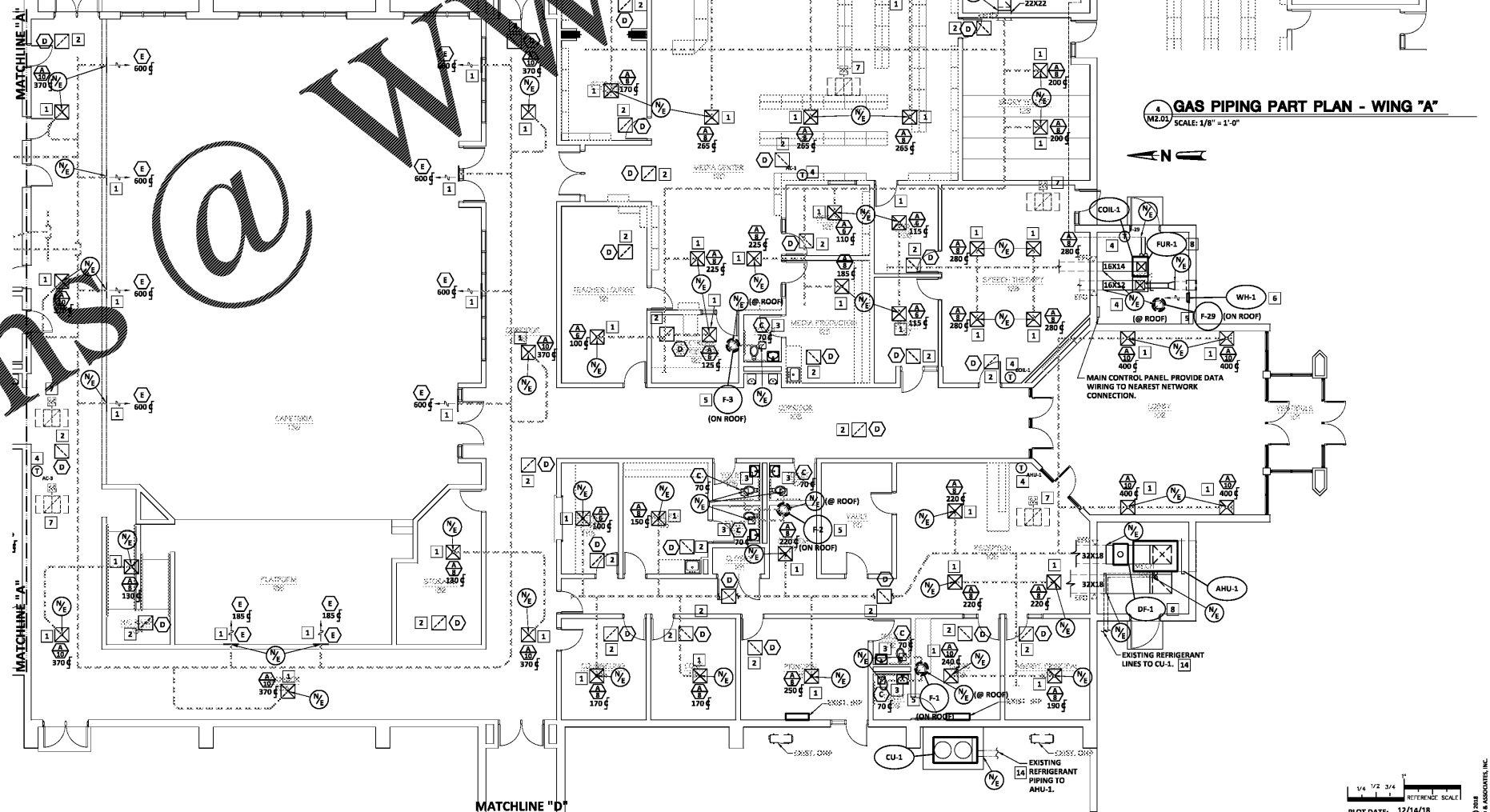
1 GAS PIPING PART PLAN - WING "A"
 SCALE: 1/8" = 1'-0"



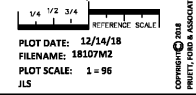
2 GAS PIPING PART PLAN - WING "A"
 SCALE: 1/8" = 1'-0"



1 HVAC NEW WORK PLAN - WING "A"
 SCALE: 1/8" = 1'-0"



2 HVAC NEW WORK PLAN - WING "A"
 SCALE: 1/8" = 1'-0"



PLOT DATE: 12/14/18
 FILENAME: 18107M2
 PLOT SCALE: 1 = 96
 JLS

Order Plans @ WWW.LDMLINE.COM