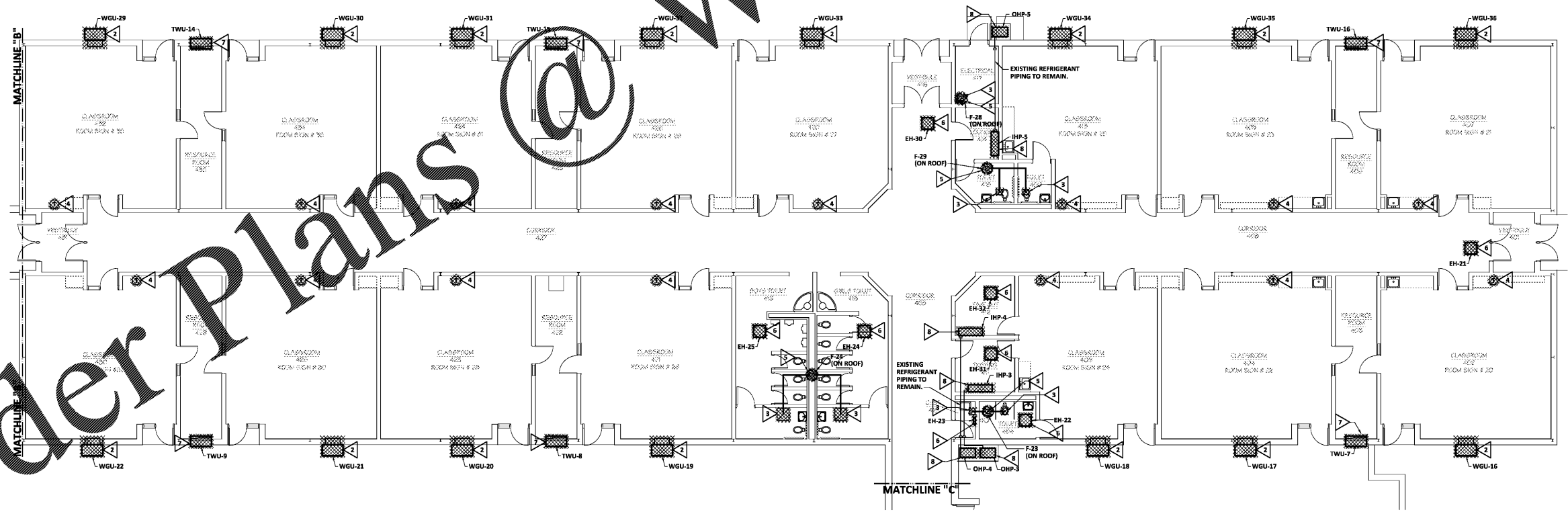


**HVAC DEMOLITION PLAN - WING "E"**  
 SCALE: 1/8" = 1'-0"

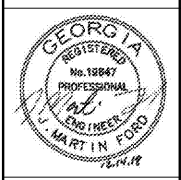
**DEMOLITION NOTES (THIS SHEET ONLY):**

- ▷ DEMOLISH EXISTING SUPPLY DIFFUSER.
- ▷ DEMOLISH EXISTING WALL-MOUNT GAS UNIT AND ASSOCIATED AIR DEVICES, WIRING, CONTROLS AND ACCESSORIES. REMOVE EXISTING ABOVE-GROUND GAS PIPING.
- ▷ DEMOLISH EXISTING EXHAUST GRILLE.
- ▷ DEMOLISH EXISTING THERMOSTAT.
- ▷ DEMOLISH EXISTING FAN AND ASSOCIATED ACCESSORIES. DUCT RISER TO REMAIN.
- ▷ DEMOLISH EXISTING ELECTRIC HEATER AND ASSOCIATED ACCESSORIES.
- ▷ DEMOLISH EXISTING THRU-WALL UNIT AND ASSOCIATED LOUVER AND ACCESSORIES.
- ▷ DEMOLISH EXISTING MINI SPLIT SYSTEM AND ASSOCIATED ACCESSORIES.



**HVAC DEMOLITION PLAN - WING "D"**  
 SCALE: 1/8" = 1'-0"

HVAC & LIGHTING REPLACEMENT AT  
**TAYLORSVILLE ELEMENTARY SCHOOL**  
 1502 OLD ALABAMA ROAD, TAYLORSVILLE, GA 30078  
 FOR THE BARTOW COUNTY SCHOOL SYSTEM - DR. PHILLIP D. PAGE, SUPERINTENDENT  
 CARTERSVILLE, GEORGIA



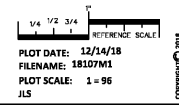
**FRUETT, FORD & ASSOCIATES, INC.**  
 CONSULTING ENGINEERS  
 100 BRAND STREET, SUITE 3A  
 AUGUSTA, GEORGIA 30901  
 Phone: 706.733.8800

THESE DOCUMENTS OF SERVICE REMAIN THE PROPERTY OF THE ARCHITECT AND NO PART THEREOF MAY BE USED OR REPRODUCED IN ANY FORM WITHOUT WRITTEN PERMISSION

NO.	REVISIONS	DATE

CONSTRUCTION DOCUMENTS

HVAC PLAN  
 SCALE: 1/8" = 1'-0"  
 SHEET  
**M1.03**  
 XXX OF 32  
 FILE: 18.04  
 DATE: 12/14/18



PLOT DATE: 12/14/18  
 FILENAME: 18107M1  
 PLOT SCALE: 1 = 96  
 1/5

Order Plans @ WWW.EDLine.com