

KEY PLAN

2/M1.02

1/M1.02

HVAC & LIGHTING REPLACEMENT AT  
**TAYLORSVILLE ELEMENTARY SCHOOL**  
1502 OLD ALABAMA ROAD, TAYLORSVILLE, GA 30078  
FOR THE BARTOW COUNTY SCHOOL SYSTEM - DR. PHILLIP D. PAGE, SUPERINTENDENT  
CARTERSVILLE, GEORGIA



**FRUETT, FORD & ASSOCIATES, INC.**  
CONSULTING ENGINEERS  
100 BRAND STREET, SUITE 3A  
AUGUSTA, GEORGIA 30601  
Phone: 706.733.8888

THESE DOCUMENTS, AS INSTRUMENTS OF SERVICE, REMAIN THE PROPERTY OF THE ARCHITECT AND NO PART THEREOF MAY BE USED OR REPRODUCED IN ANY FORM WITHOUT WRITTEN PERMISSION

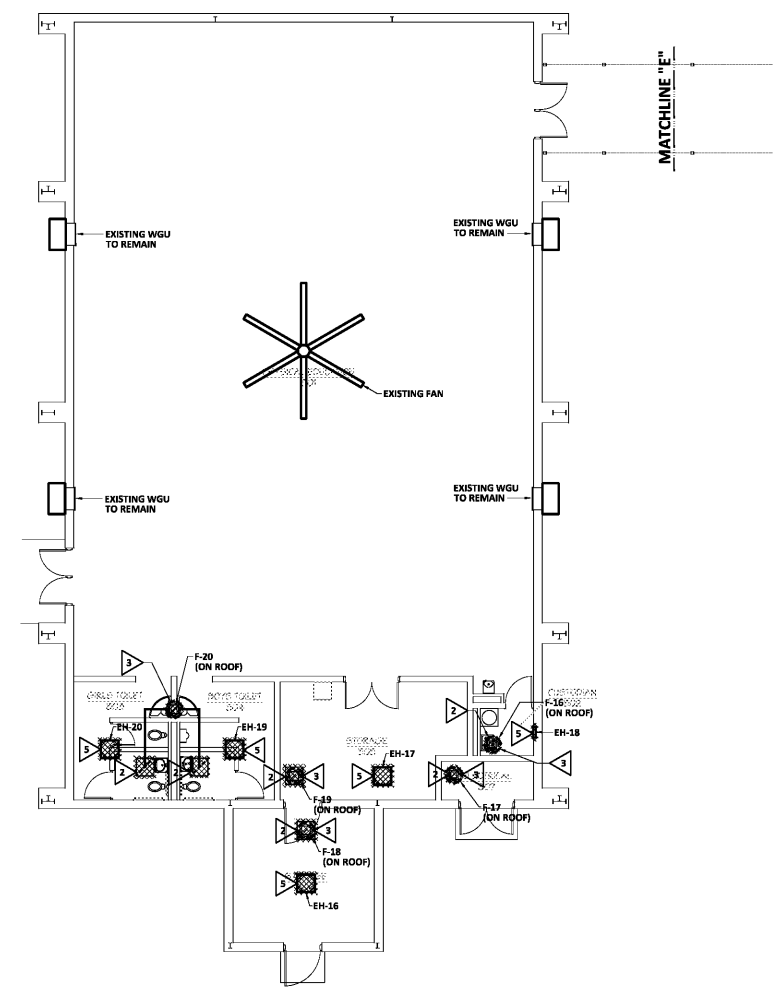
| NO. | REVISIONS | DATE |
|-----|-----------|------|
|     |           |      |
|     |           |      |
|     |           |      |

CONSTRUCTION DOCUMENTS

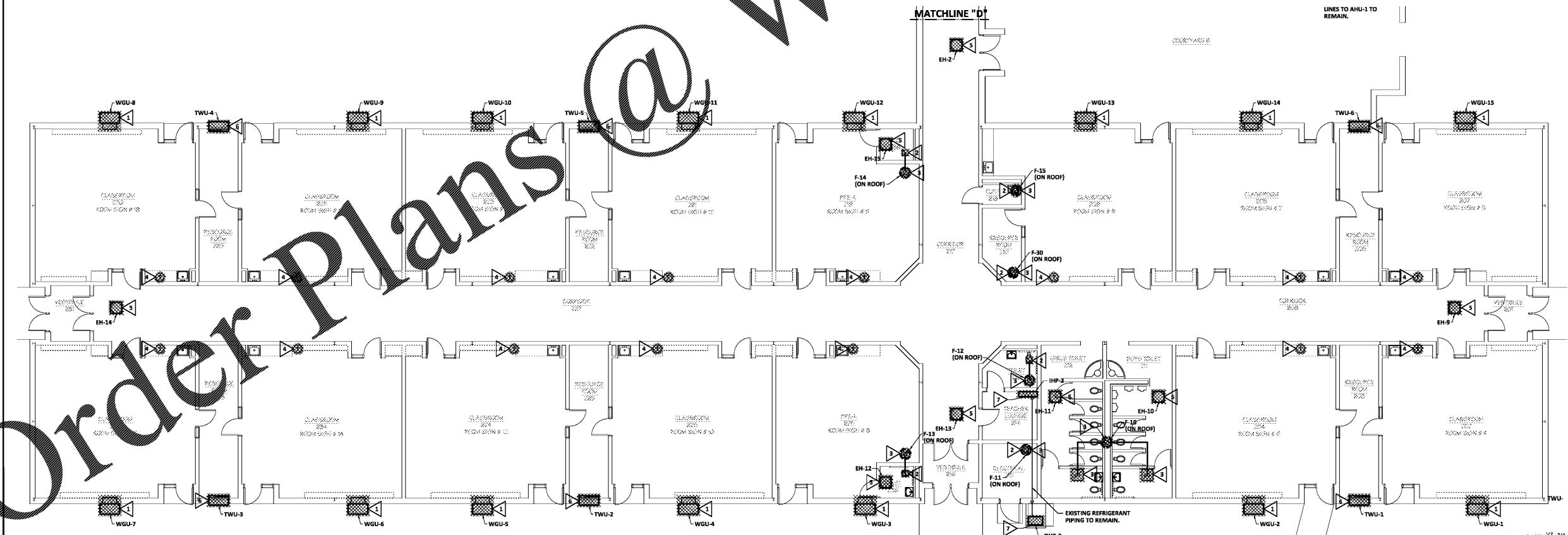
HVAC PLAN  
SCALE: 1/8" = 1'-0"  
SHEET  
**M1.02**  
XXX OF 32  
FILE: 18.04  
DATE: 12/14/18

**DEMOLITION NOTES (THIS SHEET ONLY):**

- ▽ DEMOLISH EXISTING WALL-MOUNT GAS UNIT AND ASSOCIATED AIR DEVICES, WIRING, CONTROLS AND ACCESSORIES. REMOVE EXISTING ABOVE-GROUND GAS PIPING.
- ▽ DEMOLISH EXISTING EXHAUST GRILLE.
- ▽ DEMOLISH EXISTING FAN AND ASSOCIATED ACCESSORIES. DUCT RISER TO REMAIN.
- ▽ DEMOLISH EXISTING THERMOSTAT.
- ▽ DEMOLISH EXISTING ELECTRIC HEATER AND ASSOCIATED ACCESSORIES.
- ▽ DEMOLISH EXISTING THRU-WALL UNIT AND ASSOCIATED LOUVER AND ACCESSORIES.
- ▽ DEMOLISH EXISTING MINI SPLIT SYSTEM AND ASSOCIATED ACCESSORIES.



**HVAC DEMOLITION PLAN - WING "C"**  
SCALE: 1/8" = 1'-0"



**HVAC DEMOLITION PLAN - WING "B"**  
SCALE: 1/8" = 1'-0"



PLOT DATE: 12/14/18  
FILENAME: 18107M1  
PLOT SCALE: 1 = 96  
JLS

COPYRIGHT © 2018  
FRUETT, FORD & ASSOCIATES, INC.  
AUGUSTA, GA 30601 (706) 733-8888

Order Plans @ [www.LDILine.com](http://www.LDILine.com)