

HVAC & LIGHTING REPLACEMENT AT
TAYLORSVILLE ELEMENTARY SCHOOL

1502 OLD ALABAMA ROAD, TAYLORSVILLE, GA 30178
FOR THE BARTOW COUNTY SCHOOL SYSTEM - DR. PHILLIP D. PAGE, SUPERINTENDENT
CARTERSVILLE, GEORGIA



THESE DOCUMENTS OF SERVICE, REMAIN THE PROPERTY OF THE ARCHITECT AND NO PART THEREOF MAY BE REPRODUCED OR USED IN ANY MANNER WITHOUT WRITTEN PERMISSION

DATE	
REVISIONS	
NO.	

CONSTRUCTION DOCUMENTS

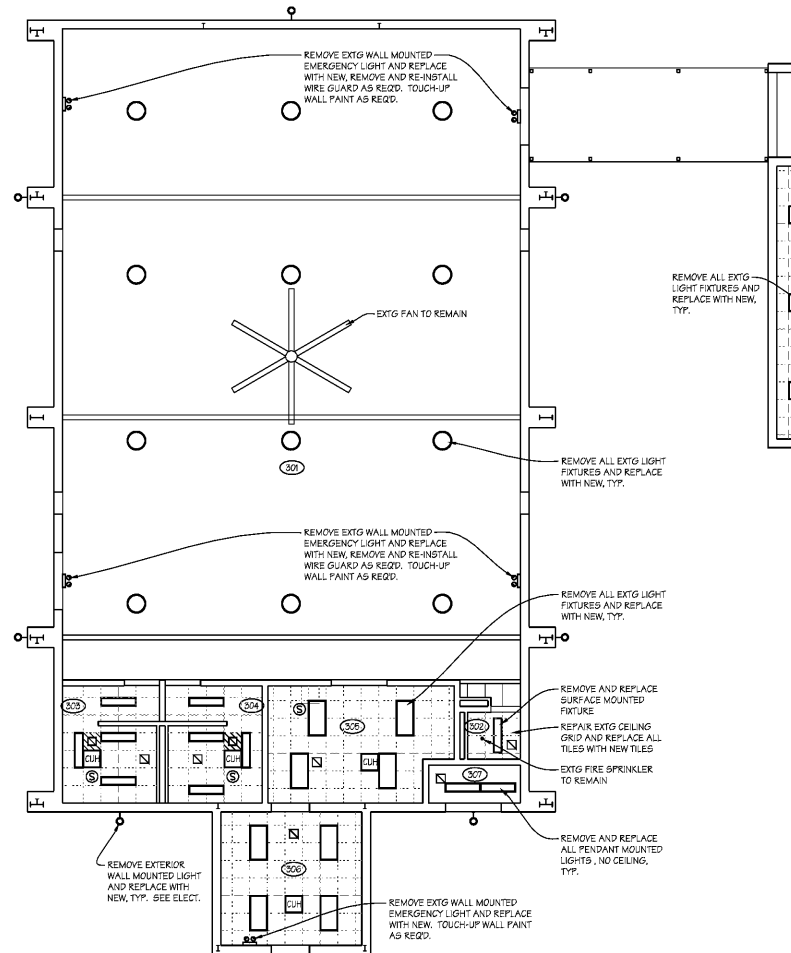
WING C, D, E REFLECTED CEILING PLAN

SCALE: 1/8" = 1'-0"

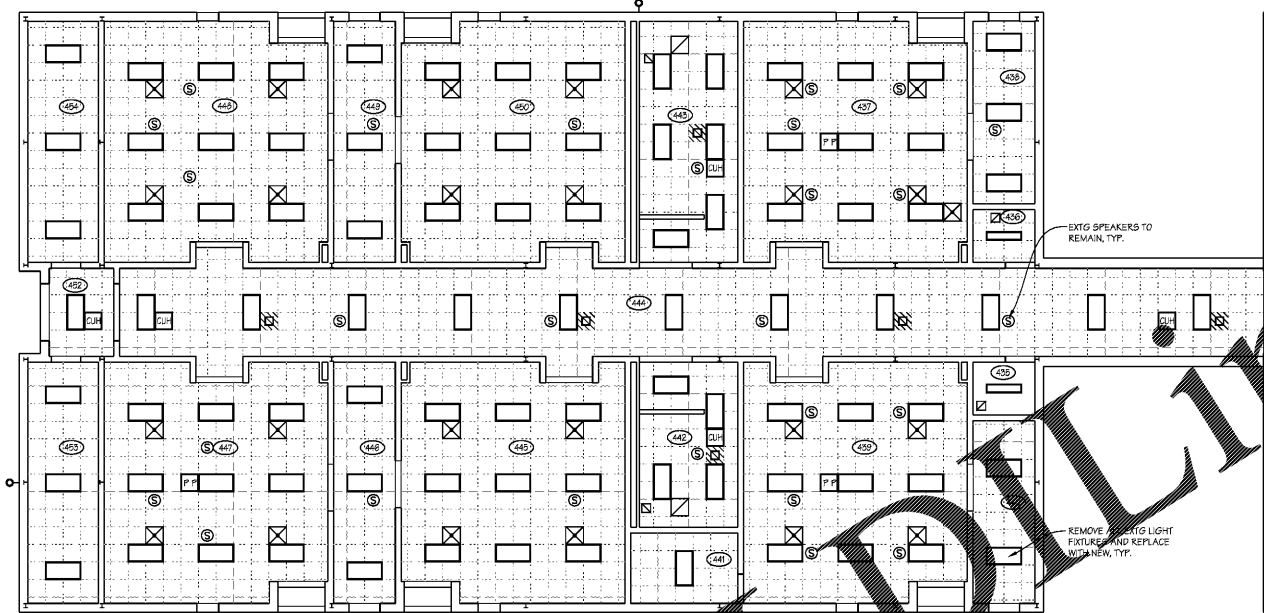
SHEET

A3.03
8 OF 32

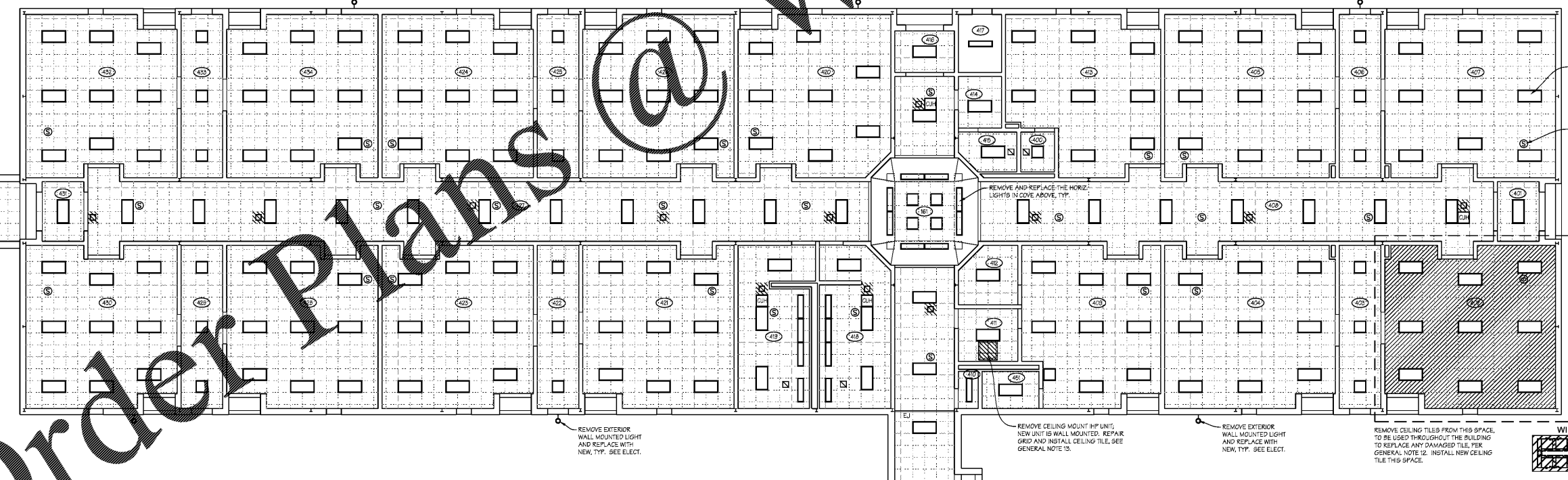
FILE: 18.09
DATE: 12/14/18



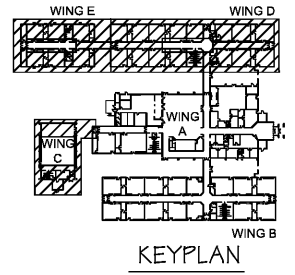
WING C REFLECTED CEILING PLAN
1
A3.03



WING E REFLECTED CEILING PLAN
3
A3.03



WING D REFLECTED CEILING PLAN
2
A3.03



Order Plans @ WWW.LDLINE.COM