

# HVAC AND LIGHTING REPLACEMENT AT TAYLORSVILLE ELEMENTARY SCHOOL

1502 OLD ALABAMA ROAD  
TAYLORSVILLE, GEORGIA

for the  
Bartow County School System  
Cartersville, Georgia

DELOACH

721 WALNUT STREET  
POST OFFICE BOX 6926  
MACON GEORGIA 31208  
phone: 478-742-4998  
fax: 478-742-5207  
archgroup@deloacharchitects.com

ARCHITECTS

HVAC & LIGHTING REPLACEMENT AT  
TAYLORSVILLE ELEMENTARY  
SCHOOL

1502 OLD ALABAMA ROAD, TAYLORSVILLE, GA 30178  
FOR THE BARTOW COUNTY SCHOOL SYSTEM - DR. PHILLIP D. PAGE, SUPERINTENDENT  
CARTERSVILLE, GEORGIA

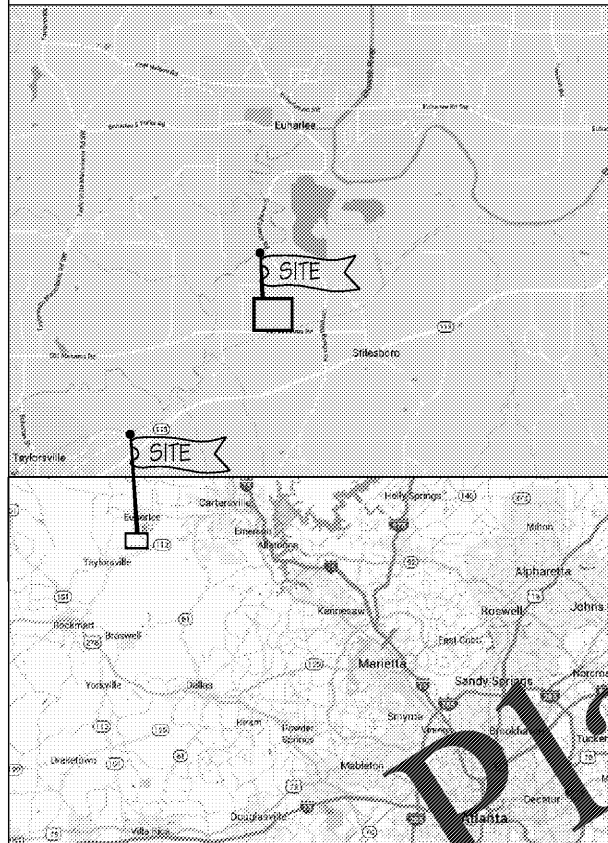


THESE DOCUMENTS, AS INSTRUMENTS OF SERVICE, REMAIN THE PROPERTY OF THE ARCHITECT AND NO REUSE OR REPRODUCTION IS PERMITTED WITHOUT WRITTEN PERMISSION.

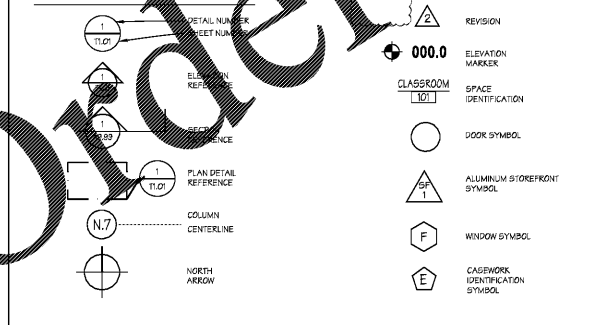
NO.	DATE	REVISIONS

CONSTRUCTION DOCUMENTS  
TITLE SHEET  
SCALE: AS NOTED  
SHEET  
T1.01  
1 OF 32  
FILE: 18\_09  
DATE: 12/14/18

LOCATION MAPS



GRAPHIC SYMBOLS



ABBREVIATIONS

AB	ANCHOR BOLT	FB	FACE OF BRICK	GT	QUARRY TILE
AD	ADVIS	FOW	FACE OF MASONRY	GTD	QUARRY BASE (GRANITE)
AC	AIR CONDITIONING	FPS	FACE OF SLUG	GTY	QUANTITY
AD	ADDRESS	FR	FIBERGLASS REINFORCED POLYMER (FIBERGLASS FRAGS)	K	KICKER
ACT	ACTUAL	FS	FEATHER STRIP (ONITE OR RUBBER)	KR	KURAP
ADU	ADJUSTABLE, ADJUSTABLE	FT	FOOT, FEET	KR2	KEURON AIR GRILLE
AF	ADJUSTABLE FINISH FLOOR	FTS	FOOTING	KR3	KIBLITZ BAKE
AG	AGGREGATE	FRS	FLOOR WOOD SOLID CORE	KR4	KURUS
AL	ALUMINUM	GA	GAGE, GAUGE	KD	KOOF DRAIN
ALN	ALTERNATE	GA2	GALVANIZED	KEP	KEFRICEKOR
ANC	ANCHOR ANCHORAGE	GA3	GALVANIZED	KEB	KEFRICEKOR
AN	ANCHOR	GB	GRAB BAR	KEM	KEMERBOND
AP	APPROXIMATE	GC	GENERAL CONTRACT (OR)	KEK	KESUBIN
APX	APPROXIMATE	GD	GRAND DRAIN	KEM	KEMERBOND
AUT	AUTOMATIC	GE	GLASS GLAZING	KEK	KESUBIN
AW	AUTOMATIC WALL COVERING	GS	GLASS GLAZING	KER	KEROLINE
AWP	AUTOMATIC WALL PANEL	GS2	GLASS GLAZING (GLAZING ON THIS SIDE OF FRAME)	KES	KESUBIN KEYS
BD	BOARD	GWB	GAS WATER HEATER	KFR	KUBER FLOORING
BE	BLOCK	GWH	GAS WATER HEATER	KH	KAIN LEADER
BS	BUILDING	H	HANGING	KL	KOOL
BU	BUSHING	HA	HANDRAIL	KS	KOOSH OPENING
BU2	BUSHING	HB	HANDRAIL	KR	KURAP
BSM	BENCH MARK	HC	HANDCAPP (FEET)	KR2	KEURON RIBBER FLOOR
BSF	BOTTOM	HCD	HOLLOW CORE DOOR	KR3	KURUS RIBBER FLOOR
BSR	BREAKING	HD	HAND DRIVE	KR4	KURUS RIBBER FLOOR
BSB	BOTH SIDES	HDF	HAND DRIVE	KR5	KURUS RIBBER FLOOR
BUR	BURST UP ROOFING	HDS	HAND DRIVE	KR6	KURUS RIBBER FLOOR
BS	BURST UP ROOFING	HDS2	HAND DRIVE	KR7	KURUS RIBBER FLOOR
BS	BURST UP ROOFING	HDS3	HAND DRIVE	KR8	KURUS RIBBER FLOOR
BS	BURST UP ROOFING	HDS4	HAND DRIVE	KR9	KURUS RIBBER FLOOR
BS	BURST UP ROOFING	HDS5	HAND DRIVE	KR10	KURUS RIBBER FLOOR
BS	BURST UP ROOFING	HDS6	HAND DRIVE	KR11	KURUS RIBBER FLOOR
BS	BURST UP ROOFING	HDS7	HAND DRIVE	KR12	KURUS RIBBER FLOOR
BS	BURST UP ROOFING	HDS8	HAND DRIVE	KR13	KURUS RIBBER FLOOR
BS	BURST UP ROOFING	HDS9	HAND DRIVE	KR14	KURUS RIBBER FLOOR
BS	BURST UP ROOFING	HDS10	HAND DRIVE	KR15	KURUS RIBBER FLOOR
BS	BURST UP ROOFING	HDS11	HAND DRIVE	KR16	KURUS RIBBER FLOOR
BS	BURST UP ROOFING	HDS12	HAND DRIVE	KR17	KURUS RIBBER FLOOR
BS	BURST UP ROOFING	HDS13	HAND DRIVE	KR18	KURUS RIBBER FLOOR
BS	BURST UP ROOFING	HDS14	HAND DRIVE	KR19	KURUS RIBBER FLOOR
BS	BURST UP ROOFING	HDS15	HAND DRIVE	KR20	KURUS RIBBER FLOOR
BS	BURST UP ROOFING	HDS16	HAND DRIVE	KR21	KURUS RIBBER FLOOR
BS	BURST UP ROOFING	HDS17	HAND DRIVE	KR22	KURUS RIBBER FLOOR
BS	BURST UP ROOFING	HDS18	HAND DRIVE	KR23	KURUS RIBBER FLOOR
BS	BURST UP ROOFING	HDS19	HAND DRIVE	KR24	KURUS RIBBER FLOOR
BS	BURST UP ROOFING	HDS20	HAND DRIVE	KR25	KURUS RIBBER FLOOR
BS	BURST UP ROOFING	HDS21	HAND DRIVE	KR26	KURUS RIBBER FLOOR
BS	BURST UP ROOFING	HDS22	HAND DRIVE	KR27	KURUS RIBBER FLOOR
BS	BURST UP ROOFING	HDS23	HAND DRIVE	KR28	KURUS RIBBER FLOOR
BS	BURST UP ROOFING	HDS24	HAND DRIVE	KR29	KURUS RIBBER FLOOR
BS	BURST UP ROOFING	HDS25	HAND DRIVE	KR30	KURUS RIBBER FLOOR
BS	BURST UP ROOFING	HDS26	HAND DRIVE	KR31	KURUS RIBBER FLOOR
BS	BURST UP ROOFING	HDS27	HAND DRIVE	KR32	KURUS RIBBER FLOOR
BS	BURST UP ROOFING	HDS28	HAND DRIVE	KR33	KURUS RIBBER FLOOR
BS	BURST UP ROOFING	HDS29	HAND DRIVE	KR34	KURUS RIBBER FLOOR
BS	BURST UP ROOFING	HDS30	HAND DRIVE	KR35	KURUS RIBBER FLOOR
BS	BURST UP ROOFING	HDS31	HAND DRIVE	KR36	KURUS RIBBER FLOOR
BS	BURST UP ROOFING	HDS32	HAND DRIVE	KR37	KURUS RIBBER FLOOR
BS	BURST UP ROOFING	HDS33	HAND DRIVE	KR38	KURUS RIBBER FLOOR
BS	BURST UP ROOFING	HDS34	HAND DRIVE	KR39	KURUS RIBBER FLOOR
BS	BURST UP ROOFING	HDS35	HAND DRIVE	KR40	KURUS RIBBER FLOOR
BS	BURST UP ROOFING	HDS36	HAND DRIVE	KR41	KURUS RIBBER FLOOR
BS	BURST UP ROOFING	HDS37	HAND DRIVE	KR42	KURUS RIBBER FLOOR
BS	BURST UP ROOFING	HDS38	HAND DRIVE	KR43	KURUS RIBBER FLOOR
BS	BURST UP ROOFING	HDS39	HAND DRIVE	KR44	KURUS RIBBER FLOOR
BS	BURST UP ROOFING	HDS40	HAND DRIVE	KR45	KURUS RIBBER FLOOR
BS	BURST UP ROOFING	HDS41	HAND DRIVE	KR46	KURUS RIBBER FLOOR
BS	BURST UP ROOFING	HDS42	HAND DRIVE	KR47	KURUS RIBBER FLOOR
BS	BURST UP ROOFING	HDS43	HAND DRIVE	KR48	KURUS RIBBER FLOOR
BS	BURST UP ROOFING	HDS44	HAND DRIVE	KR49	KURUS RIBBER FLOOR
BS	BURST UP ROOFING	HDS45	HAND DRIVE	KR50	KURUS RIBBER FLOOR
BS	BURST UP ROOFING	HDS46	HAND DRIVE	KR51	KURUS RIBBER FLOOR
BS	BURST UP ROOFING	HDS47	HAND DRIVE	KR52	KURUS RIBBER FLOOR
BS	BURST UP ROOFING	HDS48	HAND DRIVE	KR53	KURUS RIBBER FLOOR
BS	BURST UP ROOFING	HDS49	HAND DRIVE	KR54	KURUS RIBBER FLOOR
BS	BURST UP ROOFING	HDS50	HAND DRIVE	KR55	KURUS RIBBER FLOOR
BS	BURST UP ROOFING	HDS51	HAND DRIVE	KR56	KURUS RIBBER FLOOR
BS	BURST UP ROOFING	HDS52	HAND DRIVE	KR57	KURUS RIBBER FLOOR
BS	BURST UP ROOFING	HDS53	HAND DRIVE	KR58	KURUS RIBBER FLOOR
BS	BURST UP ROOFING	HDS54	HAND DRIVE	KR59	KURUS RIBBER FLOOR
BS	BURST UP ROOFING	HDS55	HAND DRIVE	KR60	KURUS RIBBER FLOOR
BS	BURST UP ROOFING	HDS56	HAND DRIVE	KR61	KURUS RIBBER FLOOR
BS	BURST UP ROOFING	HDS57	HAND DRIVE	KR62	KURUS RIBBER FLOOR
BS	BURST UP ROOFING	HDS58	HAND DRIVE	KR63	KURUS RIBBER FLOOR
BS	BURST UP ROOFING	HDS59	HAND DRIVE	KR64	KURUS RIBBER FLOOR
BS	BURST UP ROOFING	HDS60	HAND DRIVE	KR65	KURUS RIBBER FLOOR
BS	BURST UP ROOFING	HDS61	HAND DRIVE	KR66	KURUS RIBBER FLOOR
BS	BURST UP ROOFING	HDS62	HAND DRIVE	KR67	KURUS RIBBER FLOOR
BS	BURST UP ROOFING	HDS63	HAND DRIVE	KR68	KURUS RIBBER FLOOR
BS	BURST UP ROOFING	HDS64	HAND DRIVE	KR69	KURUS RIBBER FLOOR
BS	BURST UP ROOFING	HDS65	HAND DRIVE	KR70	KURUS RIBBER FLOOR
BS	BURST UP ROOFING	HDS66	HAND DRIVE	KR71	KURUS RIBBER FLOOR
BS	BURST UP ROOFING	HDS67	HAND DRIVE	KR72	KURUS RIBBER FLOOR
BS	BURST UP ROOFING	HDS68	HAND DRIVE	KR73	KURUS RIBBER FLOOR
BS	BURST UP ROOFING	HDS69	HAND DRIVE	KR74	KURUS RIBBER FLOOR
BS	BURST UP ROOFING	HDS70	HAND DRIVE	KR75	KURUS RIBBER FLOOR
BS	BURST UP ROOFING	HDS71	HAND DRIVE	KR76	KURUS RIBBER FLOOR
BS	BURST UP ROOFING	HDS72	HAND DRIVE	KR77	KURUS RIBBER FLOOR
BS	BURST UP ROOFING	HDS73	HAND DRIVE	KR78	KURUS RIBBER FLOOR
BS	BURST UP ROOFING	HDS74	HAND DRIVE	KR79	KURUS RIBBER FLOOR
BS	BURST UP ROOFING	HDS75	HAND DRIVE	KR80	KURUS RIBBER FLOOR
BS	BURST UP ROOFING	HDS76	HAND DRIVE	KR81	KURUS RIBBER FLOOR
BS	BURST UP ROOFING	HDS77	HAND DRIVE	KR82	KURUS RIBBER FLOOR
BS	BURST UP ROOFING	HDS78	HAND DRIVE	KR83	KURUS RIBBER FLOOR
BS	BURST UP ROOFING	HDS79	HAND DRIVE	KR84	KURUS RIBBER FLOOR
BS	BURST UP ROOFING	HDS80	HAND DRIVE	KR85	KURUS RIBBER FLOOR
BS	BURST UP ROOFING	HDS81	HAND DRIVE	KR86	KURUS RIBBER FLOOR
BS	BURST UP ROOFING	HDS82	HAND DRIVE	KR87	KURUS RIBBER FLOOR
BS	BURST UP ROOFING	HDS83	HAND DRIVE	KR88	KURUS RIBBER FLOOR
BS	BURST UP ROOFING	HDS84	HAND DRIVE	KR89	KURUS RIBBER FLOOR
BS	BURST UP ROOFING	HDS85	HAND DRIVE	KR90	KURUS RIBBER FLOOR
BS	BURST UP ROOFING	HDS86	HAND DRIVE	KR91	KURUS RIBBER FLOOR
BS	BURST UP ROOFING	HDS87	HAND DRIVE	KR92	KURUS RIBBER FLOOR
BS	BURST UP ROOFING	HDS88	HAND DRIVE	KR93	KURUS RIBBER FLOOR
BS	BURST UP ROOFING	HDS89	HAND DRIVE	KR94	KURUS RIBBER FLOOR
BS	BURST UP ROOFING	HDS90	HAND DRIVE	KR95	KURUS RIBBER FLOOR
BS	BURST UP ROOFING	HDS91	HAND DRIVE	KR96	KURUS RIBBER FLOOR
BS	BURST UP ROOFING	HDS92	HAND DRIVE	KR97	KURUS RIBBER FLOOR
BS	BURST UP ROOFING	HDS93	HAND DRIVE	KR98	KURUS RIBBER FLOOR
BS	BURST UP ROOFING	HDS94	HAND DRIVE	KR99	KURUS RIBBER FLOOR
BS	BURST UP ROOFING	HDS95	HAND DRIVE	KR100	KURUS RIBBER FLOOR

DESIGN TEAM

**ARCHITECTURAL**  
DeLoach Architects, Inc.  
Attn: Wm. Harold DeLoach  
P.O. Box 6926, 721 Walnut St.  
Macon, Georgia 31208-6926  
(478) 742-4998  
FAX: (478) 742-5207

**PLUMBING MECHANICAL**  
Fruett, Ford, & Associates Inc.  
Attn: Martin Ford  
1201 Broad Street, Suite 3A  
Augusta, Georgia 30901  
(706) 722-3959  
FAX: (706) 724-5127

**ELECTRICAL**  
Electrical Design Consultants  
Attn: Jeff McGee  
175 New Street, Suite 1  
Macon, Georgia 31201  
(478) 781-1833  
FAX: (478) 781-1967

GENERAL NOTES

- NO PRODUCTS CONTAINING ASBESTOS SHALL BE INSTALLED ON THIS JOB.
- No product containing lead shall be used in the potable water system, such as in drinking fountains, copper pipe solder joints, etc. Lead-free pipes, solder and flux shall be used for potable water plumbing system.
- Dielectric adaptors shall be used when pipes of dissimilar metals are being connected.
- It is the responsibility of the General Contractor to environmentally control the building to install materials which are affected by climatic conditions. In the event that the buildings new HVAC is used for this purpose, the warranty shall not begin until the date of substantial completion.
- All floor mounted water heaters, floor mounted HVAC units and electrical panels shall be set on a (minimum) 6" high concrete housekeeping pad.
- Field measure/verify all dimensions before fabricating or constructing. Notify Architect of any discrepancies before performing any work.
- See Specification Section 01300-Allowances for completing remedial work at rated walls, which shall include, but not limited to:
  - Any existing penetrations through rated walls that are open, shall be sealed with fire caulk. The original contract drawings will be made available for determining rated walls. See Detail 9/A4.01 for typical examples of penetrating rated walls.
  - If not in place, identify all rated walls, using 2" high letters, stencil @ 12"-0" o.c. (above the finished ceiling), the indication of the appropriate rating i.e. "1-HR Fire and Smoke Barrier-Protect All Openings as Required". The original contract drawings will be made available for determining rated walls.
  - See Detail 5/A4.01 for the general composition of the secondary and finish ceiling. The secondary ceiling shall be repaired/new panels placed, if damaged/missing.
- Contractor shall take care to protect all existing adjacent materials from being damaged during this work.
- For all new or existing concrete masonry units receiving new paint, fill all nail holes and cracks, repair chipped/cracked block, apply sufficient block fill to receive new paint finish.
- "Tooth-in" all brick and block work at in-fills.
- Where materials that are glued to walls are removed, completely remove residual glue from wall surface.
- In specific classrooms noted on the Reflected Ceiling Plans, the ceiling tiles shall be removed for the purpose of re-installing them as "replacement tile" in other spaces where mechanical grilles, emergency lights, etc have been removed. The intent is for the replacement tiles to be installed in these locations in order to match adjacent tiles. In those specific classrooms, the ceiling grid shall remain in place and new acoustical tiles shall be installed. Refer to the Reflected Ceiling Plans for location of those classrooms.
- Where ceiling tiles are removed to facilitate mechanical or electrical work above the ceiling, reinstall the ceiling tile in good condition. If damaged, install a ceiling tile from the "replacement tile" stock noted in Note 12.
- The Contractor shall have a low voltage sub-contractor to disconnect any low voltage items in the ceiling where new ceiling tiles are to be installed. The low voltage sub-contractor shall install the low voltage items in the new ceiling tiles, reconnect and ensure each is working properly.
- See Mechanical Drawings for the removal and replacement of HVAC units, exhaust fans, wall and ceiling heaters.
- See Electrical Drawings for the removal and replacement of light fixtures (including exit signs), installation of dimming system and occupancy sensors.

