



THESE DOCUMENTS, AND INSTRUMENTS OF SERVICE, REMAIN THE PROPERTY OF ARCHITECT AND NO PART THEREOF MAY BE REPRODUCED OR USED IN ANY FORM WITHOUT WRITTEN PERMISSION

NO.	REVISIONS	DATE

CONSTRUCTION DOCUMENT:

FLOOR PLAN WING C - HVAC

SHEET  
**E3.2**  
25 OF 30

FILE: 18.10  
DATE: 12/14/18

MECHANICAL UNIT POWER DATA NOTES	REV
OLD UNIT NAME: EP-33	REV
200V/Ø	
BREAKER: 20A/7P	
CONDUIT: 1/2"NC	
DISCONNECT:	
WIRE: 3/4"	
NEW UNIT NAME:	
BREAKER:	
CONDUIT:	
DISCONNECT:	
WIRE:	
DISCONNECT: M.B. SWITCH	NO

MECHANICAL UNIT POWER DATA NOTES	REV
OLD UNIT NAME: MWP-1	REV
200V/Ø	
BREAKER: 20A/7P	
CONDUIT: 1/2"NC	
DISCONNECT:	
WIRE: 3/4"	
NEW UNIT NAME:	
BREAKER:	
CONDUIT:	
DISCONNECT:	
WIRE:	
DISCONNECT: M.B. SWITCH	NO

MECHANICAL UNIT POWER DATA NOTES	REV
OLD UNIT NAME: EH-6	REV
220V/Ø	
BREAKER: 20A/7P	
CONDUIT: 1/2"NC	
DISCONNECT:	
WIRE: 3/4"	
NEW UNIT NAME:	
BREAKER:	
CONDUIT:	
DISCONNECT:	
WIRE:	
DISCONNECT: M.B. SWITCH	NO

MECHANICAL UNIT POWER DATA NOTES	REV
OLD UNIT NAME: EP-7	REV
200V/Ø	
BREAKER: 20A/7P	
CONDUIT: 1/2"NC	
DISCONNECT:	
WIRE: 3/4"	
NEW UNIT NAME:	
BREAKER:	
CONDUIT:	
DISCONNECT:	
WIRE:	
DISCONNECT: M.B. SWITCH	NO

MECHANICAL UNIT POWER DATA NOTES	REV
OLD UNIT NAME: EP-6	REV
200V/Ø	
BREAKER: 20A/7P	
CONDUIT: 1/2"NC	
DISCONNECT:	
WIRE: 3/4"	
NEW UNIT NAME:	
BREAKER:	
CONDUIT:	
DISCONNECT:	
WIRE:	
DISCONNECT: M.B. SWITCH	NO

MECHANICAL UNIT POWER DATA NOTES	REV
OLD UNIT NAME: EH-4	REV
220V/Ø	
BREAKER: 20A/7P	
CONDUIT: 1/2"NC	
DISCONNECT:	
WIRE: 3/4"	
NEW UNIT NAME:	
BREAKER:	
CONDUIT:	
DISCONNECT:	
WIRE:	
DISCONNECT: M.B. SWITCH	NO

MECHANICAL UNIT POWER DATA NOTES	REV
OLD UNIT NAME: EH-3	REV
220V/Ø	
BREAKER: 20A/7P	
CONDUIT: 1/2"NC	
DISCONNECT:	
WIRE: 3/4"	
NEW UNIT NAME:	
BREAKER:	
CONDUIT:	
DISCONNECT:	
WIRE:	
DISCONNECT: M.B. SWITCH	NO

MECHANICAL UNIT POWER DATA NOTES	REV
OLD UNIT NAME: EH-2	REV
220V/Ø	
BREAKER: 20A/7P	
CONDUIT: 1/2"NC	
DISCONNECT:	
WIRE: 3/4"	
NEW UNIT NAME:	
BREAKER:	
CONDUIT:	
DISCONNECT:	
WIRE:	
DISCONNECT: M.B. SWITCH	NO

MECHANICAL UNIT POWER DATA NOTES	REV
OLD UNIT NAME: EH-1	REV
220V/Ø	
BREAKER: 20A/7P	
CONDUIT: 1/2"NC	
DISCONNECT:	
WIRE: 3/4"	
NEW UNIT NAME:	
BREAKER:	
CONDUIT:	
DISCONNECT:	
WIRE:	
DISCONNECT: M.B. SWITCH	NO

MECHANICAL UNIT POWER DATA NOTES	REV
OLD UNIT NAME: EH-10	REV
220V/Ø	
BREAKER: 20A/7P	
CONDUIT: 1/2"NC	
DISCONNECT:	
WIRE: 3/4"	
NEW UNIT NAME:	
BREAKER:	
CONDUIT:	
DISCONNECT:	
WIRE:	
DISCONNECT: M.B. SWITCH	NO

MECHANICAL UNIT POWER DATA NOTES	REV
OLD UNIT NAME: EH-9	REV
220V/Ø	
BREAKER: 20A/7P	
CONDUIT: 1/2"NC	
DISCONNECT:	
WIRE: 3/4"	
NEW UNIT NAME:	
BREAKER:	
CONDUIT:	
DISCONNECT:	
WIRE:	
DISCONNECT: M.B. SWITCH	NO

MECHANICAL UNIT POWER DATA NOTES	REV
OLD UNIT NAME: EH-8	REV
220V/Ø	
BREAKER: 20A/7P	
CONDUIT: 1/2"NC	
DISCONNECT:	
WIRE: 3/4"	
NEW UNIT NAME:	
BREAKER:	
CONDUIT:	
DISCONNECT:	
WIRE:	
DISCONNECT: M.B. SWITCH	NO

MECHANICAL UNIT POWER DATA NOTES	REV
OLD UNIT NAME: EH-7	REV
220V/Ø	
BREAKER: 20A/7P	
CONDUIT: 1/2"NC	
DISCONNECT:	
WIRE: 3/4"	
NEW UNIT NAME:	
BREAKER:	
CONDUIT:	
DISCONNECT:	
WIRE:	
DISCONNECT: M.B. SWITCH	NO

MECHANICAL UNIT POWER DATA NOTES	REV
OLD UNIT NAME: EH-5	REV
220V/Ø	
BREAKER: 20A/7P	
CONDUIT: 1/2"NC	
DISCONNECT:	
WIRE: 3/4"	
NEW UNIT NAME:	
BREAKER:	
CONDUIT:	
DISCONNECT:	
WIRE:	
DISCONNECT: M.B. SWITCH	NO

MECHANICAL UNIT POWER DATA NOTES	REV
OLD UNIT NAME: EH-4	REV
220V/Ø	
BREAKER: 20A/7P	
CONDUIT: 1/2"NC	
DISCONNECT:	
WIRE: 3/4"	
NEW UNIT NAME:	
BREAKER:	
CONDUIT:	
DISCONNECT:	
WIRE:	
DISCONNECT: M.B. SWITCH	NO

MECHANICAL UNIT POWER DATA NOTES	REV
OLD UNIT NAME: EH-3	REV
220V/Ø	
BREAKER: 20A/7P	
CONDUIT: 1/2"NC	
DISCONNECT:	
WIRE: 3/4"	
NEW UNIT NAME:	
BREAKER:	
CONDUIT:	
DISCONNECT:	
WIRE:	
DISCONNECT: M.B. SWITCH	NO

MECHANICAL UNIT POWER DATA NOTES	REV
OLD UNIT NAME: MWP-2	REV
200V/Ø	
BREAKER: 20A/7P	
CONDUIT: 1/2"NC	
DISCONNECT:	
WIRE: 3/4"	
NEW UNIT NAME:	
BREAKER:	
CONDUIT:	
DISCONNECT:	
WIRE:	
DISCONNECT: M.B. SWITCH	NO

MECHANICAL UNIT POWER DATA NOTES	REV
OLD UNIT NAME: MWP-1	REV
200V/Ø	
BREAKER: 20A/7P	
CONDUIT: 1/2"NC	
DISCONNECT:	
WIRE: 3/4"	
NEW UNIT NAME:	
BREAKER:	
CONDUIT:	
DISCONNECT:	
WIRE:	
DISCONNECT: M.B. SWITCH	NO

MECHANICAL UNIT POWER DATA NOTES	REV
OLD UNIT NAME: RTU-2	REV
480V/3Ø	
BREAKER: 30A/3P	
CONDUIT: 1/2"NC	
DISCONNECT:	
WIRE: 3/4"	
NEW UNIT NAME:	
BREAKER:	
CONDUIT:	
DISCONNECT:	
WIRE:	
DISCONNECT: M.B. SWITCH	NO

MECHANICAL UNIT POWER DATA NOTES	REV
OLD UNIT NAME: RTU-1	REV
480V/3Ø	
BREAKER: 30A/3P	
CONDUIT: 1/2"NC	
DISCONNECT:	
WIRE: 3/4"	
NEW UNIT NAME:	
BREAKER:	
CONDUIT:	
DISCONNECT:	
WIRE:	
DISCONNECT: M.B. SWITCH	NO

MECHANICAL UNIT POWER DATA NOTES	REV
OLD UNIT NAME: EP-8	REV
200V/Ø	
BREAKER: 20A/7P	
CONDUIT: 1/2"NC	
DISCONNECT:	
WIRE: 3/4"	
NEW UNIT NAME:	
BREAKER:	
CONDUIT:	
DISCONNECT:	
WIRE:	
DISCONNECT: M.B. SWITCH	NO

MECHANICAL UNIT POWER DATA NOTES	REV
OLD UNIT NAME: EP-9	REV
200V/Ø	
BREAKER: 20A/7P	
CONDUIT: 1/2"NC	
DISCONNECT:	
WIRE: 3/4"	
NEW UNIT NAME:	
BREAKER:	
CONDUIT:	
DISCONNECT:	
WIRE:	
DISCONNECT: M.B. SWITCH	NO

MECHANICAL UNIT POWER DATA NOTES	REV
OLD UNIT NAME: EP-5	REV
200V/Ø	
BREAKER: 20A/7P	
CONDUIT: 1/2"NC	
DISCONNECT:	
WIRE: 3/4"	
NEW UNIT NAME:	
BREAKER:	
CONDUIT:	
DISCONNECT:	
WIRE:	
DISCONNECT: M.B. SWITCH	NO

MECHANICAL UNIT POWER DATA NOTES	REV
OLD UNIT NAME: EP-4	REV
200V/Ø	
BREAKER: 20A/7P	
CONDUIT: 1/2"NC	
DISCONNECT:	
WIRE: 3/4"	
NEW UNIT NAME:	
BREAKER:	
CONDUIT:	
DISCONNECT:	
WIRE:	
DISCONNECT: M.B. SWITCH	NO

MECHANICAL UNIT POWER DATA NOTES	REV
OLD UNIT NAME: EP-3	REV
200V/Ø	
BREAKER: 20A/7P	
CONDUIT: 1/2"NC	
DISCONNECT:	
WIRE: 3/4"	
NEW UNIT NAME:	
BREAKER:	
CONDUIT:	
DISCONNECT:	
WIRE:	
DISCONNECT: M.B. SWITCH	NO

MECHANICAL UNIT POWER DATA NOTES	REV
OLD UNIT NAME: EP-2	REV
200V/Ø	
BREAKER: 20A/7P	
CONDUIT: 1/2"NC	
DISCONNECT:	
WIRE: 3/4"	
NEW UNIT NAME:	
BREAKER:	
CONDUIT:	
DISCONNECT:	
WIRE:	
DISCONNECT: M.B. SWITCH	NO

MECHANICAL UNIT POWER DATA NOTES	REV
OLD UNIT NAME: EP-1	REV
200V/Ø	
BREAKER: 20A/7P	
CONDUIT: 1/2"NC	
DISCONNECT:	
WIRE: 3/4"	
NEW UNIT NAME:	
BREAKER:	
CONDUIT:	
DISCONNECT:	
WIRE:	
DISCONNECT: M.B. SWITCH	NO

1 FLOOR PLAN WING C - HVAC  
SCALE: 1/8" = 1'-0"



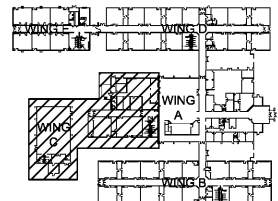
**GENERAL NOTES:** (THIS SHEET ONLY)

- A. PROVIDE ELECTRICAL CONNECTION TO EACH SMOKE DAMPER AND COMBINATION FIRE/200VOLT SMOKE DAMPER PROVIDE 3/4" x 1/2" IN. C. FROM DAMPER TO NEAREST UNSWITCHED RECEPTACLE CIRCUIT. PROVIDE MOTOR RATED SWITCH AT SMOKE DAMPER. SEE MECHANICAL PLANS FOR LOCATIONS AND QUANTITIES OF SMOKE DAMPER AND COMBINATION FIRE/SMOKE DAMPERS.
- B. WALL JUNCTION BOXES AND CONDUIT FOR THERMOSTATS SHALL BE PROVIDED BY ELECTRICAL CONTRACTOR. VERIFY EXACT LOCATION AND QUANTITY WITH MECHANICAL PRIOR TO ROUGH-IN.
- C. PROVIDE BACKBOARD TO MOUNT ALL PANELS AND DISCONNECTS.
- D. UTILIZE MECHANICAL CURBING FOR ROUTING OF CONDUITS TO ROOF TOP MOUNTED HVAC UNITS. DO NOT ROUTE THROUGH DRAIN PANS.
- E. COORDINATE EXACT LOCATIONS OF ALL MECHANICAL EQUIPMENT PRIOR TO ELECTRICAL ROUGH-IN.
- F. ALL EXTERIOR FLEXIBLE CONDUIT SHALL BE METALLIC WATERPROOF.
- G. VERIFY EXACT LOCATIONS OF ALL EXISTING FIRE ALARM DEVICES AND CONTROL EQUIPMENT PRIOR TO ANY WORK.

**MECHANICAL POWER UNIT DATA NOTES:** (THIS SHEET ONLY)

- NEW - NEW UNIT
- ES - EXISTING UNIT TO REMAIN AS-IS
- ER - EXISTING UNIT TO BE REMOVED AND NOT REPLACED
- RE - EXISTING UNIT TO BE REMOVED AND REPLACED
- EB - EXISTING BREAKER TO BE REUSED
- EC - EXISTING CONDUIT TO BE REUSED
- EW - EXISTING WIRE TO BE REUSED
- ED - EXISTING DISCONNECT TO BE REUSED
- ET - EXISTING THERMOSTAT TO BE USED
- RB - EXISTING BREAKER TO BE REPLACED
- RC - EXISTING CONDUIT TO BE REPLACED
- RW - EXISTING WIRE TO BE REPLACED
- RD - EXISTING DISCONNECT TO BE REPLACED
- RT - EXISTING THERMOSTAT TO BE REPLACED
- NC - TOTALLY NEW CONDUIT
- NB - TOTALLY NEW BREAKER
- NW - TOTALLY NEW WIRE
- ND - TOTALLY NEW DISCONNECT
- NT - TOTALLY NEW THERMOSTAT
- SD - PROVIDE DUCT SMOKE DETECTION SUPPLY DUCT

NOTES:  
1. UTILIZE ONE POLE OF EXISTING BREAKER, AND UTILIZE EXISTING CONDUCTORS AS REQUIRED PER 2017 NEC.



KEYPLAN

Order Plans @ [www.LDLine.com](http://www.LDLine.com)

