

HVAC & LIGHTING REPLACEMENT AT
KINGSTON ELEMENTARY SCHOOL
240 HARDIN BRIDGE ROAD
KINGSTON, GEORGIA 30145

FOR THE BARTOW COUNTY SCHOOL SYSTEM, DR. PHILLIP PAGE, SUPERINTENDENT
CARTERSVILLE, GEORGIA



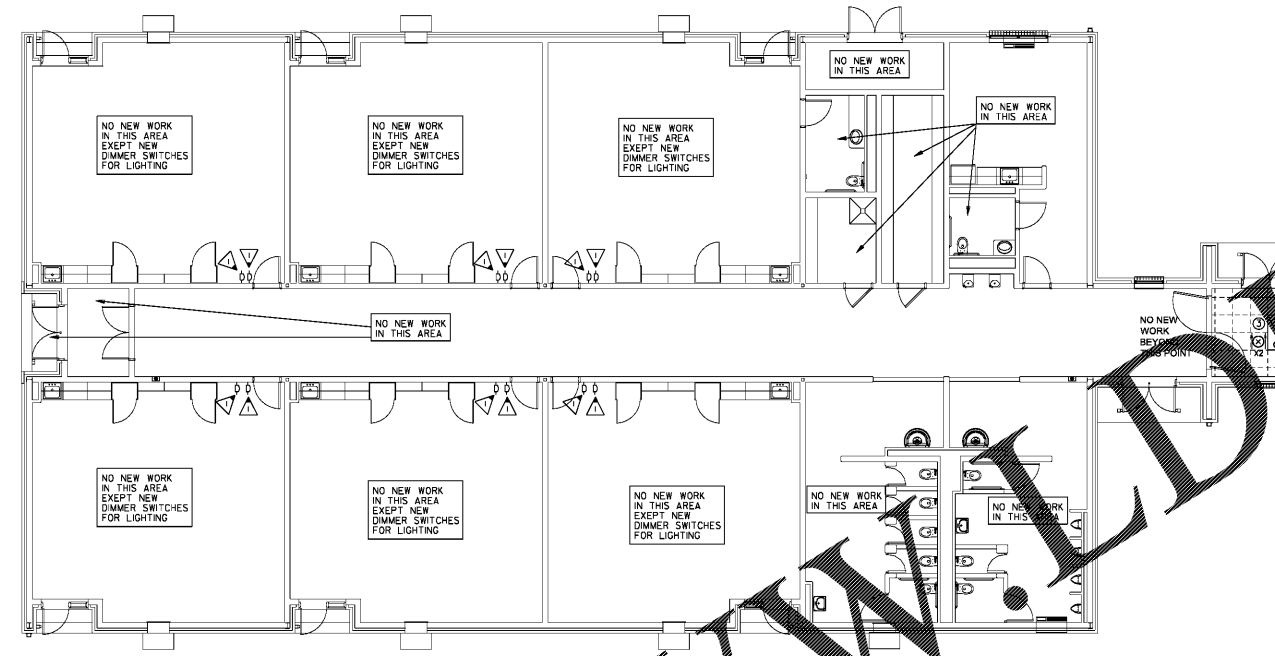
THESE DOCUMENTS, AS INSTRUMENTS OF SERVICE, REMAIN THE PROPERTY OF DELOACH ARCHITECTS AND NO PART THEREOF MAY BE USED OR REPRODUCED IN ANY FORM WITHOUT WRITTEN PERMISSION

NO.	REVISIONS	DATE

CONSTRUCTION DOCUMENT:

FLOOR PLAN WING E - LIGHTING

SHEET
E2.5
23 OF 30
FILE: 18.10
DATE: 12/14/18

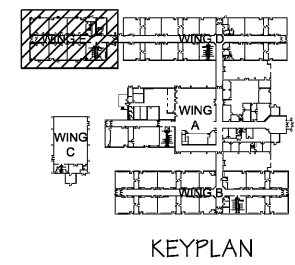


FLOOR PLAN WING E - LIGHTING
SCALE: 1/8" = 1'-0"

GENERAL LIGHTING NEW NOTES:

- A. REMOVE EXISTING SWITCHES AND FACEPLATES. PROVIDE ALL NEW DEVICES AND FACEPLATES. CONFORM WIRING TO MEET OPERATION SHOWN ON NEW WORK PLAN.
- B. REMOVE EXISTING EXIT SIGNS AND EGRESS LIGHT FIXTURES AND REPLACE. CONFORM WIRING TO MEET OPERATION SHOWN ON NEW WORK PLAN.
- C. LIGHT FIXTURES TO BE REPLACED IN AREAS SHOWN. REPLACE FIXTURE AND FIXTURE WHIP TO JUNCTION BOX FOR FIXTURES IN LAY-IN CEILINGS. PROVIDE ADDITIONAL RACEWAY AND CONDUCTORS AS REQUIRED FOR NEW OCCUPANCY SENSORS, BATTERY UNITS BUILT IN FIXTURES AND NEW DIMMERS IN CLASSROOMS.
- D. PROVIDE UNSWITCHED HOT TO NEW EGRESS FIXTURES FROM CIRCUIT SERVING LIGHTS IN THE AREA TO POWER INTEGRAL BATTERY BALLAST.

- KEYED NOTES:** (THIS SHEET ONLY)
- ▷ REPLACE SWITCH WITH 0-10V DIMMER. PROVIDE ADDITIONAL CONDUCTORS AS REQUIRED.



Order Plans @ www.LDLine.com