

Order Plans @

-- WALL MOUNT GAS UNIT --

ITEM	SUPPLY C.F.M.	EXT. S.P. W.C.	O.A. C.F.M.	COOLING CAP. BTUH	E.E.R. MIN.	HEATING CAP.		MODEL NO. (2)(3)(4)
						HI	LO	
WGU-1	1000	0.15	200	35.0	10.2	68,000	55,500	BARO W36G
WGU-2	1000	0.15	200	35.0	10.2	68,000	55,500	BARO W36G
WGU-3	1000	0.15	200	35.0	10.2	68,000	55,500	BARO W36G
WGU-4	1000	0.15	200	35.0	10.2	68,000	55,500	BARO W36G
WGU-5	1000	0.15	200	35.0	10.2	68,000	55,500	BARO W36G
WGU-6	1000	0.15	200	35.0	10.2	68,000	55,500	BARO W36G
WGU-7	1000	0.15	200	35.0	10.2	68,000	55,500	BARO W36G
WGU-8	1000	0.15	200	35.0	10.2	68,000	55,500	BARO W36G
WGU-9	1000	0.15	200	35.0	10.2	68,000	55,500	BARO W36G
WGU-10	1000	0.15	200	35.0	10.2	68,000	55,500	BARO W36G
WGU-11	1000	0.15	200	35.0	10.2	68,000	55,500	BARO W36G
WGU-12	1000	0.15	200	35.0	10.2	68,000	55,500	BARO W36G
WGU-13	1000	0.15	200	35.0	10.2	68,000	55,500	BARO W36G
WGU-14	1000	0.15	200	35.0	10.2	68,000	55,500	BARO W36G
WGU-15	1000	0.15	200	35.0	10.2	68,000	55,500	BARO W36G
WGU-16	1000	0.15	200	35.0	10.2	68,000	55,500	BARO W36G
WGU-17	1000	0.15	200	35.0	10.2	68,000	55,500	BARO W36G
WGU-18	1000	0.15	200	35.0	10.2	68,000	55,500	BARO W36G
WGU-19	1000	0.15	200	35.0	10.2	68,000	55,500	BARO W36G
WGU-20	1000	0.15	200	35.0	10.2	68,000	55,500	BARO W36G
WGU-21	1000	0.15	200	35.0	10.2	68,000	55,500	BARO W36G
WGU-22	1000	0.15	200	35.0	10.2	68,000	55,500	BARO W36G
WGU-23	1000	1/3	200	33.6	11.8	75,000	61,500	BARO W36G
WGU-24	1400	1/2	250	46.5	11.7	100,000	82,000	BARO W36G
WGU-25	1400	1/2	250	46.5	11.7	100,000	82,000	BARO W36G
WGU-26	1400	1/2	250	46.5	11.7	100,000	82,000	BARO W36G
WGU-27	1400	1/2	250	46.5	11.7	100,000	82,000	BARO W36G
WGU-28	1400	1/2	250	46.5	11.7	100,000	82,000	BARO W36G
WGU-29	1400	1/2	250	46.5	11.7	100,000	82,000	BARO W36G
WGU-30	1000	1/3	200	33.6	11.8	75,000	61,500	BARO W36G

- (1) NOT USED.
- (2) FURNISH ION GENERATOR AS SCHEDULED.
- (3) UNITS SHALL HAVE INTEGRAL DISCONNECTS AND HOT GAS REHEAT DEHUMIDIFICATION SYSTEM.
- (4) UNITS SHALL HAVE WALL MOUNTED ADAPTOR CURB.

-- ELECTRIC HEATER SCHEDULE --

ITEM	LOCATION	WATTS	Q-MARK MODEL NO.	
			HI	LO
CH-1	CORRIDOR 217	5000	CU-900 SERIES (1)	
CH-2	CORRIDOR 161	5000	CU-900 SERIES (1)	
CH-3	TOILET 154	3000	CU-900 SERIES (1)	
CH-4	CUSTODIAN 153	4000	CU-900 SERIES (1)	
CH-5	KITCHEN 148	4000	CU-900 SERIES (1)	
CH-6	KITCHEN 148	4000	CU-900 SERIES (1)	
CH-7	VESTIBULE 145	5000	CU-900 SERIES (1)	
CH-8	VESTIBULE 201	5000	CU-900 SERIES (1)	
CH-9	BOYS TOILET 211	3000	CU-900 SERIES (1)	
CH-10	GIRLS TOILET 212	3000	CU-900 SERIES (1)	
CH-11	CORRIDOR 217	5000	CU-900 SERIES (1)	
CH-12	TOILET 235	3000	CU-900 SERIES (1)	
CH-13	TOILET 236	3000	CU-900 SERIES (1)	
CH-14	CORRIDOR 227	5000	CU-900 SERIES (1)	
CH-15	STORAGE 306	4000	CU-900 SERIES (1)	
CH-16	STORAGE 305	4000	CU-900 SERIES (1)	
CH-17	BOYS TOILET 304	3000	CU-900 SERIES (1)	
CH-18	GIRLS TOILET 303	3000	CU-900 SERIES (1)	
CH-19	VESTIBULE 401	5000	CU-900 SERIES (1)	
CH-20	TOILET 451	3000	CU-900 SERIES (1)	
CH-21	TESTING 411	4000	CU-900 SERIES (1)	
CH-22	TIMEOUT 412	4000	CU-900 SERIES (1)	
CH-23	VESTIBULE 401	5000	CU-900 SERIES (1)	
CH-24	GIRLS TOILET 401	3000	CU-900 SERIES (1)	
CH-25	BOYS TOILET 401	3000	CU-900 SERIES (1)	
WH-1	MECHANICAL 159	4000	AWH4408 (2)	
WH-2	ELECTRICAL 157	4000	AWH4408 (2)	
WH-3	CUSTODIAN 153	4000	AWH4408 (2)	
WH-4	CUSTODIAN 410	4000	AWH4408 (2)	

- (1) COMPLETE WITH RECESSED CEILING TRIM KIT AND INTEGRAL THERMOSTAT.
- (2) COMPLETE WITH SURFACE MOUNT KIT AND INTEGRAL THERMOSTAT.

-- THRU WALL HEAT PUMP SCHEDULE --

ITEM	COOLING CAPACITY MBH	E.E.R.	HEATING CAPACITY MBH	C.O.P.	FAN C.F.M.	ELEC. HEAT	AMANA MODEL NO.
TWU-1	11.5	10.2	10.9	3.1	250	1.0 kW	PTH123
TWU-2	11.5	10.2	10.9	3.1	250	1.0 kW	PTH123
TWU-3	11.5	10.2	10.9	3.1	250	1.0 kW	PTH123
TWU-4	11.5	10.2	10.9	3.1	250	1.0 kW	PTH123
TWU-5	11.5	10.2	10.9	3.1	250	1.0 kW	PTH123
TWU-6	11.5	10.2	10.9	3.1	250	1.0 kW	PTH123
TWU-7	11.5	10.2	10.9	3.1	250	1.0 kW	PTH123
TWU-8	11.5	10.2	10.9	3.1	250	1.0 kW	PTH123
TWU-9	11.5	10.2	10.9	3.1	250	1.0 kW	PTH123
TWU-10	11.5	10.2	10.9	3.1	250	1.0 kW	PTH123
TWU-11	11.5	10.2	10.9	3.1	250	1.0 kW	PTH123
TWU-12	11.5	10.2	10.9	3.1	250	1.0 kW	PTH123

- (1) UNITS SHALL HAVE WALL MOUNTED ADAPTOR CURB.

H.V.A.C. LEGEND

SYMBOL	DESCRIPTION
— SL —	REFRIGERANT SUCTION / LIQUID
— D —	CONDENSATE DRAIN
⊖	THERMOSTAT 4'-6" A.F.
⊕	SENSOR
◀ FD	FIRE DAMPER
⊕ or C.F.M.	CUBIC FEET PER MINUTE
① N-1	DETAIL NO. 1/M-1 SHEET NO.
⊗	SUPPLY DIFFUSER
⊘	RETURN OR EXHAUST GRILLE
⊕ or MVD	MANUAL VOLUME DAMPER
⊕ or MVD	MANUAL OPERATED DAMPER
⊕	SQUARE EDGE SINGLE THICK TURNING VANES
⊕	DEVICE NECK CONNECTION SIZE
⊕	NEW TO EXISTING CONNECTION
⊕	DIAMETER
TYP.	TYPICAL
⊗	DEMOLITION EXTENTS (DEMO. PLANS ONLY)

HVAC NOTES:

NOT ALL EXISTING WORK IS SHOWN, AND THAT SHOWN IS IN ITS APPROXIMATE LOCATION AND ARRANGEMENT. EXACT LOCATION, ARRANGEMENT AND SIZES SHALL BE VERIFIED ON THE JOB BEFORE STARTING ANY NEW WORK.

INSTALL PIPING AND DUCTWORK IN EQUIPMENT ROOMS ADJACENT TO WALLS AND CEILING, WHERE POSSIBLE, TO PROVIDE MAXIMUM ROOM CLEARANCE.

COORDINATE THE INSTALLATION OF THIS WORK WITH THAT OF OTHER TRADES TO PROVIDE THE BEST ARRANGEMENT OF PIPING, DUCTWORK, AND EQUIPMENT. REFER TO PLUMBING AND ELECTRICAL DRAWINGS.

PIPING, DUCTWORK, AND EQUIPMENT IS SHOWN IN ITS GENERAL LOCATION, UNLESS DIMENSIONED. EXACT LOCATION SHALL BE DETERMINED BY THE LOCATION OF OTHER EQUIPMENT, AND TO PROVIDE SERVICE CLEARANCE.

ARRANGE PIPING AND DUCTWORK TO CLEAR STRUCTURAL MEMBERS, PLUMBING, PIPING AND LIGHT FIXTURES.

EXACT LOCATION OF GRILLES AND CEILING OUTLETS SHALL BE DETERMINED ON THE JOB. COORDINATE WITH LIGHTS AND ARCHITECTURAL REQUIREMENTS TO PROVIDE A UNIFORM AND SYMMETRICAL APPEARANCE. REFER TO ARCHITECTURAL AND ELECTRICAL DRAWINGS AND DETAILS.

ALL PIPING SHALL BE CONCEALED, UNLESS NOTED OTHERWISE.

PROVIDE FLEXIBLE DUCT CONNECTIONS TO ALL AIR HANDLING EQUIPMENT.

PROVIDE UNION OR FLANGE CONNECTIONS IN PIPING AT ALL EQUIPMENT AND CONTROL VALVES, AND AS REQUIRED FOR SERVICE.

PROVIDE MVD IN EACH ZONE SUPPLY DUCT OF MULTI-ZONE AHU'S.

PROVIDE ACCESS DOORS IN DUCTWORK FOR ALL FIRE AND SMOKE DAMPERS, AND DUCT-MOUNTED COILS AND CONTROL DEVICES.

PROVISIONS SHALL BE MADE FOR DRAINING ALL OUTSIDE LINES SUBJECT TO FREEZING.

UNDERGROUND PIPING SHALL HAVE A MINIMUM COVER OF 24 INCHES.

SLOPE DRAIN LINES TOWARD DRAIN WITH A MINIMUM SLOPE OF 1/4" PER FOOT.

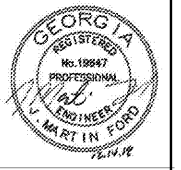
THRU-WALL UNITS SHALL BE LOCATED SO AS TO BE SYMMETRICAL WITH ROOM, WINDOWS, WALL SECTIONS, AND OTHER ARCHITECTURAL REQUIREMENTS.

DELOACH ARCHITECTS PC

721 WALNUT STREET
POST OFFICE BOX 6926
MADISON GEORGIA 31208
phone 478-742-4999
fax 478-742-5207
deloach@deloacharchitects.com

ARCHITECTS PC

HVAC & LIGHTING REPLACEMENT AT
KINGSTON ELEMENTARY SCHOOL
240 HARDIN BRIDGE ROAD, KINGSTON, GA 30145
FOR THE BARTOW COUNTY SCHOOL SYSTEM - DR. PHILLIP D. PAGE, SUPERINTENDENT
CARTERSVILLE, GEORGIA



FURTT, FORD & ASSOCIATES, INC.
CONSULTING ENGINEERS
124 BROAD STREET, SUITE 3A
ALBUQUERQUE, GEORGIA 30001
770-272-2888 • FAX 770-272-2877

THESE DOCUMENTS, AS INSTRUMENTS OF SERVICE, REMAIN THE PROPERTY OF THE ARCHITECT AND NO PART THEREOF MAY BE USED OR REPRODUCED IN ANY FORM WITHOUT WRITTEN PERMISSION

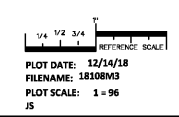
NO.	REVISIONS	DATE

CONSTRUCTION DOCUMENTS

HVAC SCHEDULES, NOTES & LEGEND
SCALE: 1/8" = 1'-0"

SHEET
M4.02
18 OF 30

FILE: 18_04
DATE: 12/14/18



DELOACH ARCHITECTS PC
721 WALNUT STREET
MADISON, GA 31208
PHONE 478-742-4999
FAX 478-742-5207
deloach@deloacharchitects.com