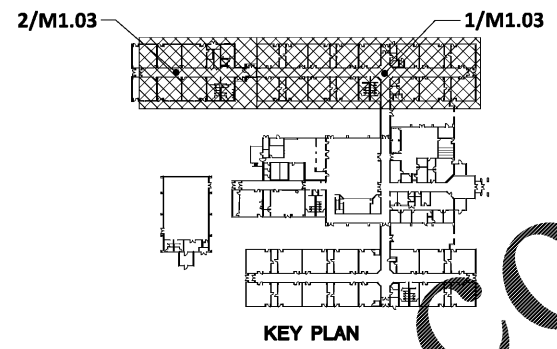
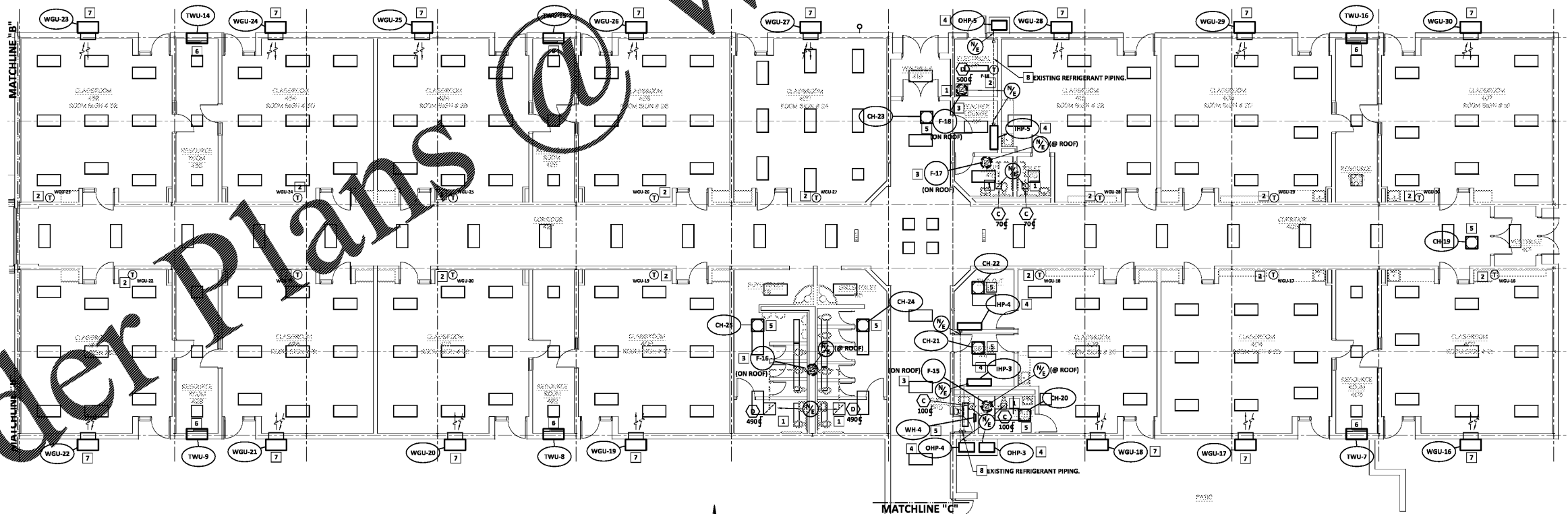


2 HVAC NEW WORK PLAN - WING "E"  
M1.03 SCALE: 1/8" = 1'-0"



KEY PLAN

- KEY NOTES** (THIS SHEET ONLY):
- 1 PROVIDE NEW EXHAUST GRILLE IN EXISTING LOCATION.
  - 2 PRESERVE AND CONNECT TO EXISTING DELTA CONTROL DEVICE.
  - 3 PROVIDE NEW ROOFTOP FURNACE AND ASSOCIATED ACCESSORIES IN EXISTING LOCATION. PROVIDE TRANSFORMERS REQUIRED TO CONNECT TO EXISTING RISER.
  - 4 PROVIDE NEW DUCTLESS SPLIT SYSTEM AND ASSOCIATED PIPING, WIRING, CONTROLS AND ACCESSORIES.
  - 5 PROVIDE NEW ELECTRIC HEATER IN EXISTING LOCATION.
  - 6 PROVIDE NEW THRU-WALL UNIT AND ASSOCIATED WIRING, CONTROLS AND ACCESSORIES IN EXISTING LOCATION.
- PROVIDE NEW WALL-MOUNTED UNIT AND ASSOCIATED AIR DEVICES, CONTROLS WIRING AND ACCESSORIES. CONNECT NEW GAS PIPING TO EXISTING GAS PIPING. FIELD VERIFY EXACT SIZE AND LOCATION. DISCHARGE TO GRADE AND COORDINATE DRY WELL LOCATION WITH FIELD CONDITIONS. SEE ARCHITECTURAL.
- PURGE, CLEAN AND REUSE EXISTING REFRIGERANT PIPING WHERE POSSIBLE.

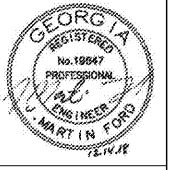


1 HVAC NEW WORK PLAN - WING "D"  
M1.03 SCALE: 1/8" = 1'-0"

**DELOACH**  
721 WALNUT STREET  
POST OFFICE BOX 6926  
MADON GEORGIA 31208  
phone 478-742-4999  
fax 478-742-5207  
ddi.gap@dealach.com

**ARCHITECTS**  
PC

HVAC & LIGHTING REPLACEMENT AT  
**KINGSTON ELEMENTARY SCHOOL**  
240 HARDIN BRIDGE ROAD, KINGSTON, GA 30145  
FOR THE BARTOW COUNTY SCHOOL SYSTEM - DR. PHILIP D. PAGE, SUPERINTENDENT  
CARTERSVILLE, GEORGIA



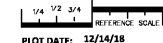
**FRUETT, RORD & ASSOCIATES, INC.**  
CONSULTING ENGINEERS  
200 BROAD STREET, SUITE 3A  
AUGUSTA, GEORGIA 30601  
706-725-2888 • FAX 706-725-2727

THESE DOCUMENTS, AS SHOWN, ARE THE PROPERTY OF THE ARCHITECT AND NO PART THEREOF MAY BE USED OR REPRODUCED IN ANY FORM WITHOUT WRITTEN PERMISSION

NO.	REVISIONS	DATE

CONSTRUCTION DOCUMENTS

HVAC PLAN  
SCALE: 1/8" = 1'-0"  
SHEET  
**M2.03**  
15 OF 30  
FILE: 18.04  
DATE: 12/14/18



PLOT DATE: 12/14/18  
FILENAME: 18108M2  
PLOT SCALE: 1 = 96  
JIS

FRUETT, RORD & ASSOCIATES, INC.  
AUGUSTA, GA 30601 (706) 725-2888

Order Plans @ [www.dlLine.com](http://www.dlLine.com)