

HYAC & LIGHTING REPLACEMENT AT
**KINGSTON ELEMENTARY
SCHOOL**

240 HARDIN BRIDGE ROAD, KINGSTON, GA 30145
FOR THE BARTOW COUNTY SCHOOL SYSTEM - DR. PHILIP D. PAGE, SUPERINTENDENT
CARTERSVILLE, GEORGIA



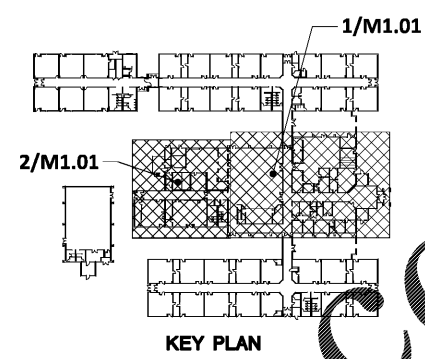
FRIETT, FORD & ASSOCIATES, INC.
CONSULTING ENGINEERS
100 BROAD STREET, SUITE 3A
ALBUQUERQUE, GEORGIA 30001
770-275-2800 FAX: 770-275-2801

THESE DOCUMENTS, AS INSTRUMENTS OF SERVICE, REMAIN THE PROPERTY OF THE ARCHITECT AND NO PART THEREOF MAY BE USED OR REPRODUCED IN ANY FORM WITHOUT WRITTEN PERMISSION

NO.	REVISIONS	DATE

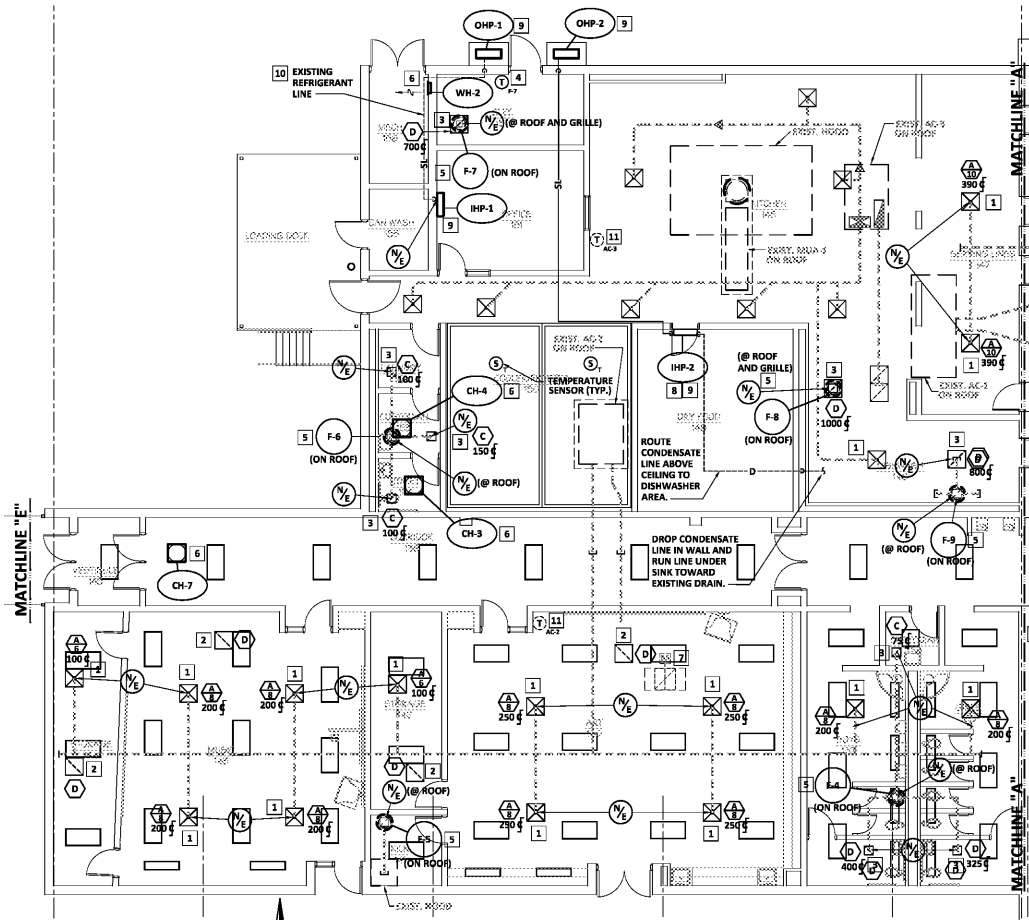
CONSTRUCTION DOCUMENTS

HYAC PLAN
SCALE: 1/8" = 1'-0"
SHEET
M2.01
13 OF 30
FILE: 18.04
DATE: 12/14/18

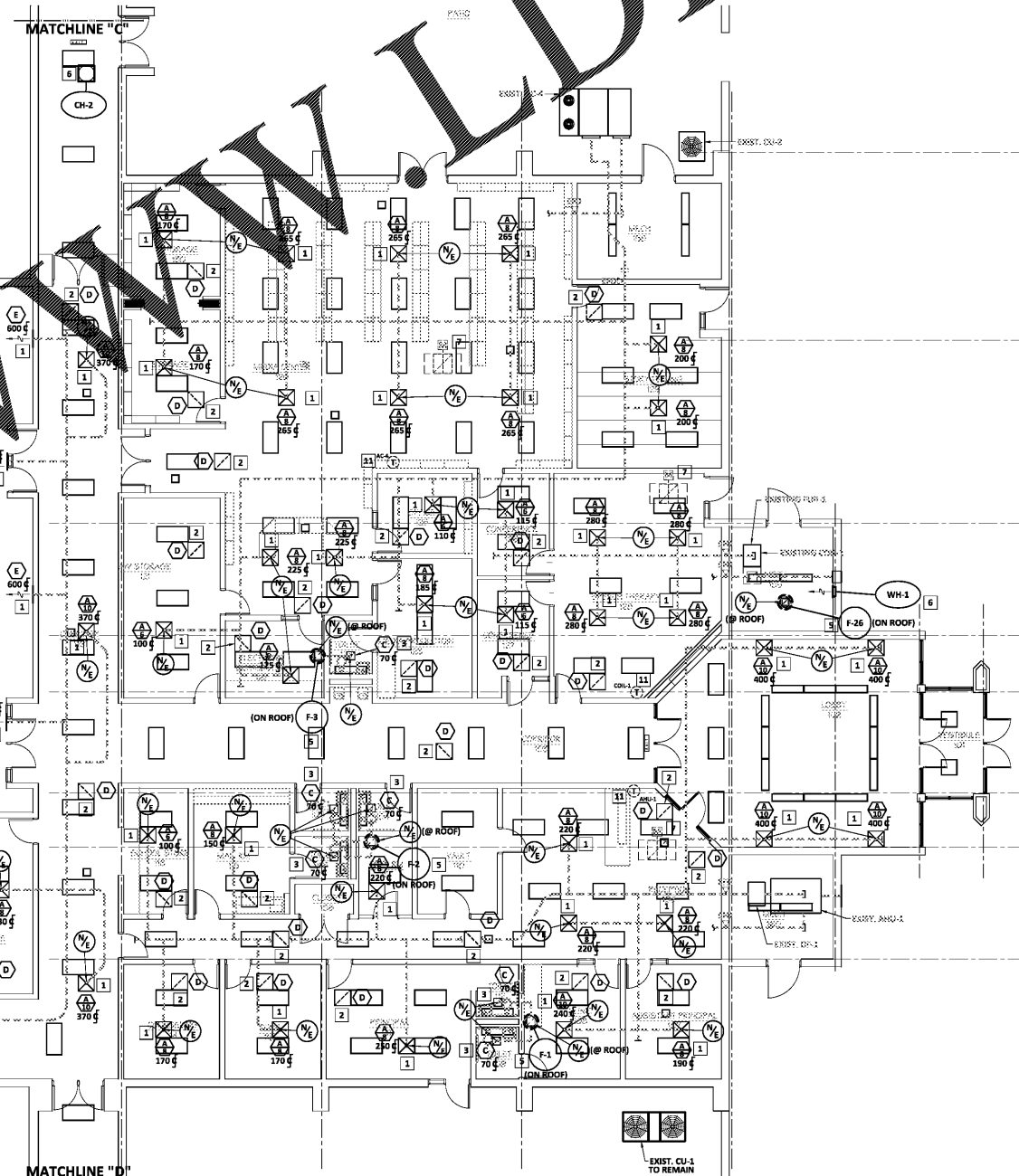


KEY PLAN

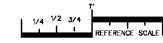
- KEY NOTES (THIS SHEET ONLY):**
- 1 PROVIDE NEW SUPPLY DIFFUSER IN EXISTING LOCATION.
 - 2 PROVIDE NEW RETURN GRILLE IN EXISTING LOCATION.
 - 3 PROVIDE NEW EXHAUST GRILLE IN EXISTING LOCATION.
 - 4 PROVIDE NEW THERMOSTAT IN EXISTING LOCATION.
 - 5 PROVIDE NEW FAN AND ASSOCIATED ACCESSORIES IN EXISTING LOCATION. PROVIDE TRANSITION AS REQUIRED TO CONNECT TO EXISTING PIPING.
 - 6 PROVIDE NEW ELECTRIC HEATERS IN EXISTING LOCATION.
 - 7 EXISTING RELIEF DAMPER TO REMAIN. CLOSE EXIST. DAMPER AND SEAL DUCT OPENING IN PLENUM.
 - 8 PROVIDE LINE HIDE KIT AND CONDENSATE PUMP FOR NEW INDOOR HEAT PUMP.
 - 9 CONNECT NEW HVAC LINE TO EXISTING DELTA CONTROL. SEE SPECIFICATION.
 - 10 PURGE, CLEAN AND REFL. EXISTING REFRIGERANT PIPING WHERE POSSIBLE.
 - 11 PRESERVE EXISTING DELTA CONTROL DEVICE.



2 HVAC NEW WORK PLAN - WING "A"
SCALE: 1/8" = 1'-0"



1 HVAC NEW WORK PLAN - WING "A"
SCALE: 1/8" = 1'-0"



PLOT DATE: 12/14/18
FILENAME: 18108M2
PLOT SCALE: 1 = 96
JIS

COPYRIGHT © 2018
FRIETT, FORD & ASSOCIATES, INC.
ALBUQUERQUE, GA 30001 (770) 275-2800

Order Plans @ www.ldline.com