

HVAC & LIGHTING REPLACEMENT AT  
**KINGSTON ELEMENTARY**  
**SCHOOL**

240 HARDIN BRIDGE ROAD, KINGSTON, GA 30145  
 FOR THE BARTOW COUNTY SCHOOL SYSTEM - DR. PHILLIP D. PAGE, SUPERINTENDENT  
 CARTERSVILLE, GEORGIA



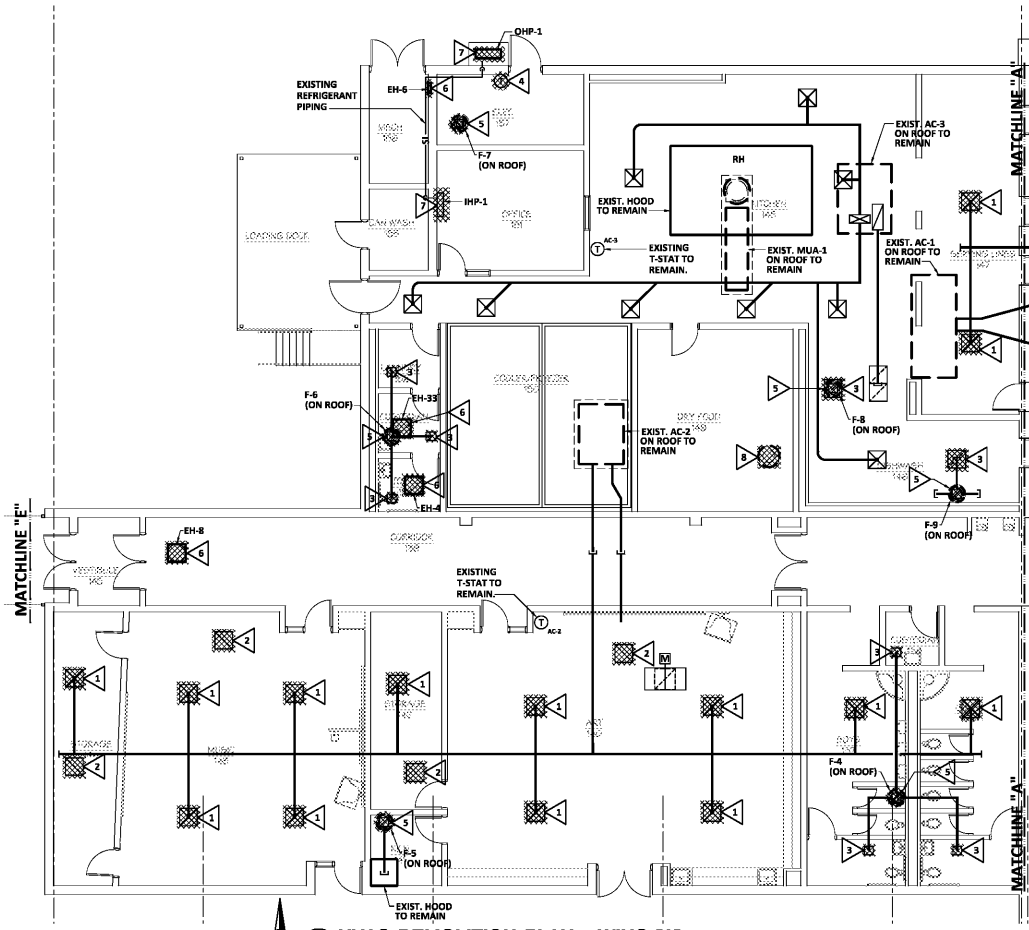
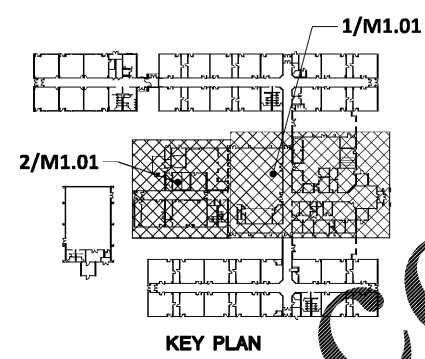
**FURTT, FORD & ASSOCIATES, INC.**  
 CONSULTING ENGINEERS  
 100 BROAD STREET, SUITE 3A  
 ALCOCK, GEORGIA 30012  
 PHONE 404-764-7400

THESE DOCUMENTS, AS INSTRUMENTS OF SERVICE, REMAIN THE PROPERTY OF THE ARCHITECT AND NO PART THEREOF MAY BE USED OR REPRODUCED IN ANY FORM WITHOUT WRITTEN PERMISSION

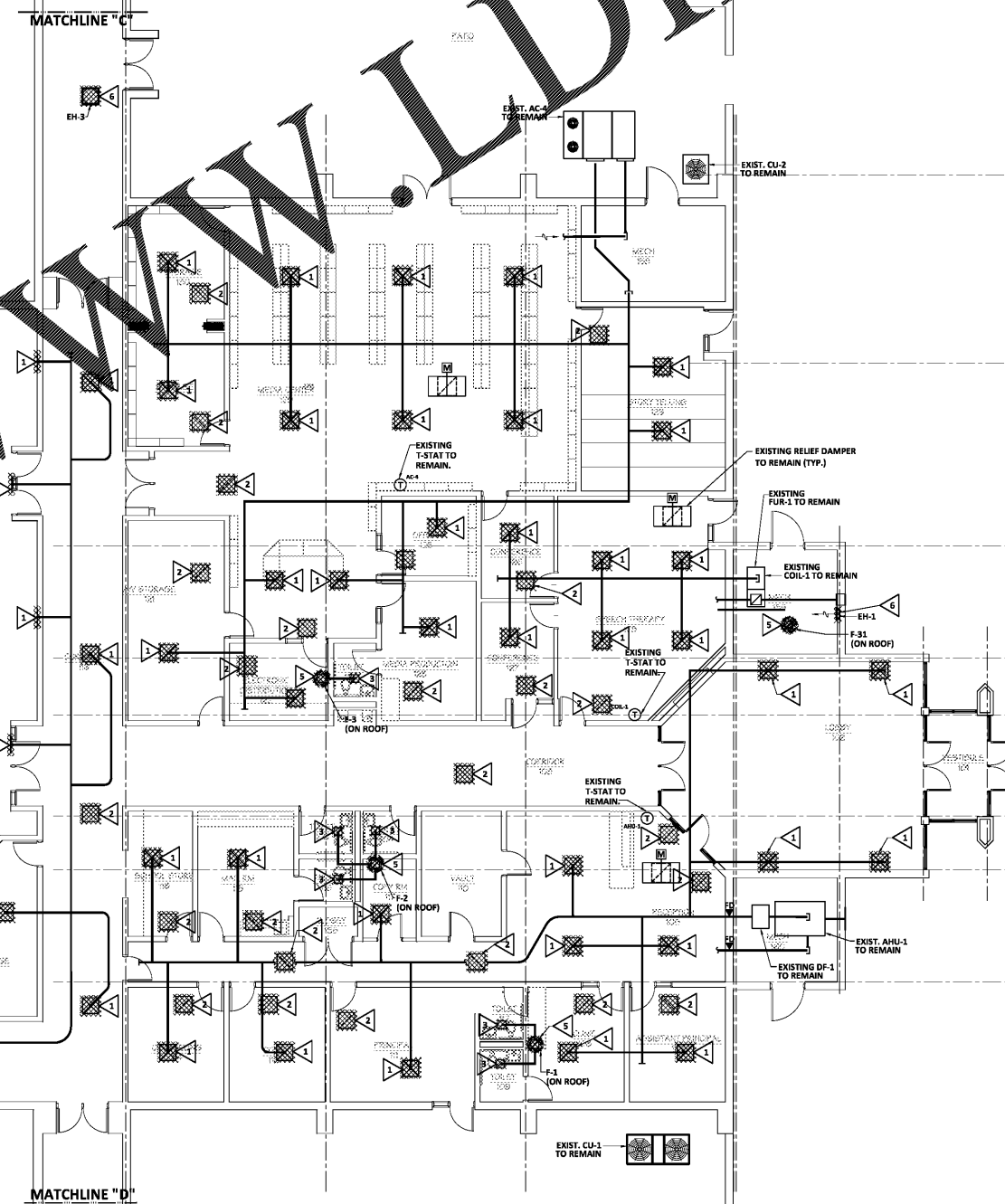
NO.	REVISIONS	DATE

CONSTRUCTION DOCUMENTS

HVAC PLAN  
 SCALE: 1/8" = 1'-0"  
 SHEET  
**M1.01**  
 10 OF 30  
 FILE: 18.04  
 DATE: 12/14/18



**2 HVAC DEMOLITION PLAN - WING "A"**  
 SCALE: 1/8" = 1'-0"

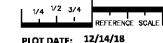


**1 HVAC DEMOLITION PLAN - WING "A"**  
 SCALE: 1/8" = 1'-0"

**DEMOLITION NOTES (THIS SHEET ONLY):**

- ▼ DEMOLISH EXISTING SUPPLY DIFFUSER.
- ▼ DEMOLISH EXISTING RETURN GRILLE.
- ▼ DEMOLISH EXISTING EXHAUST GRILLE.
- ▼ DEMOLISH EXISTING THERMOSTAT.
- ▼ DEMOLISH EXISTING FAN AND ASSOCIATED ACCESSORIES. DUCT RISER TO REMAIN.
- ▼ DEMOLISH EXISTING ELECTRIC HEATER AND ASSOCIATED ACCESSORIES.
- ▼ DEMOLISH EXISTING DUCTLESS SPLIT SYSTEM AND ASSOCIATED ACCESSORIES. LEAVE ASSOCIATED REFRIGERANT PIPING IN PLACE.
- ▼ ABANDON EXISTING GRAVITY VENTILATOR AND RISER ROOF.

Order Plans @ WWW.LDLine.com



REFERENCE SCALE  
 PLOT DATE: 12/14/18  
 FILENAME: 18108M1  
 PLOT SCALE: 1 = 96  
 JLS

COPYRIGHT © 2018  
 FURTT, FORD & ASSOCIATES, INC.  
 ALCOCK, GA 30012 (404) 764-7400