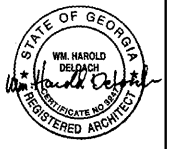


HVAC & LIGHTING REPLACEMENT AT
KINGSTON ELEMENTARY SCHOOL
240 HARDIN BRIDGE ROAD, KINGSTON, GA 30145
FOR THE BARTOW COUNTY SCHOOL SYSTEM - DR. PHILIP D. PAGE, SUPERINTENDENT
CARTERSVILLE, GEORGIA

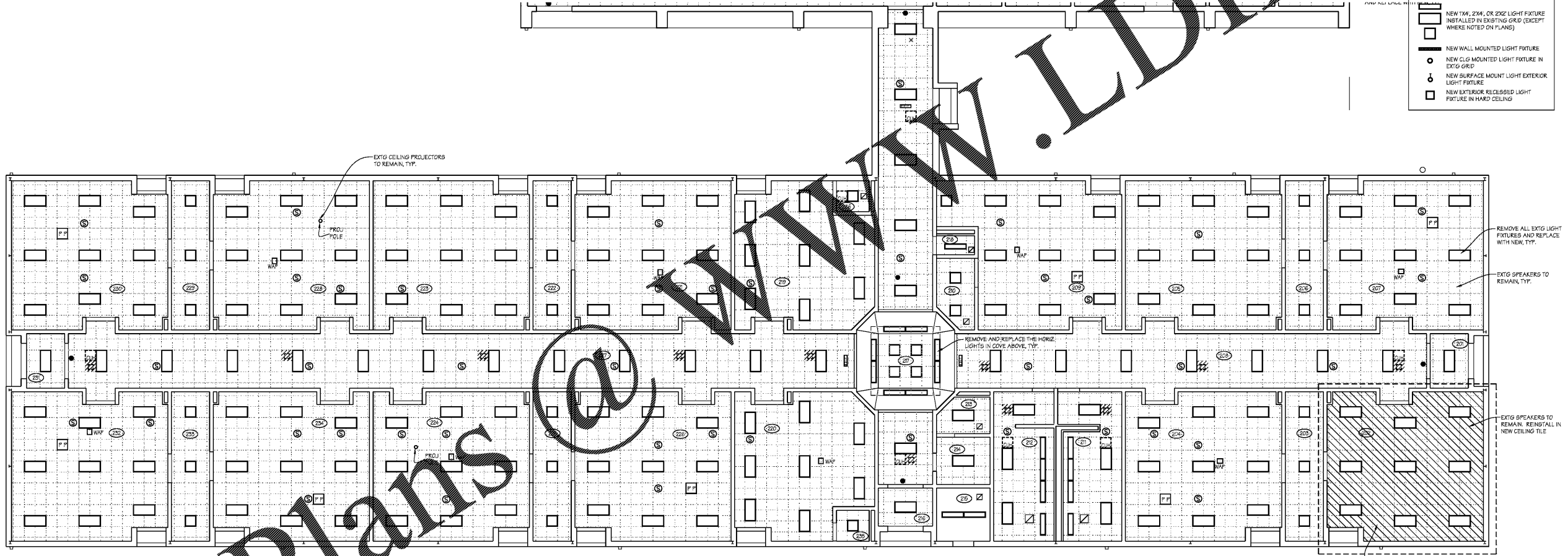
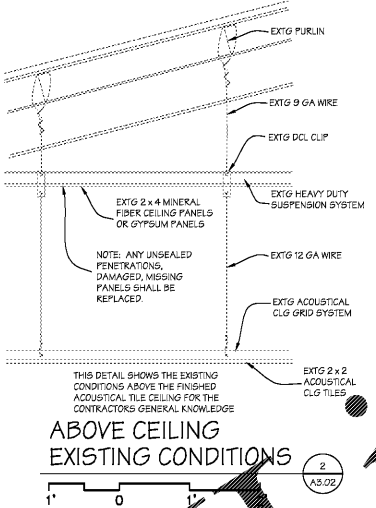


THESE DOCUMENTS, AS INSTRUMENTS OF SERVICE, REMAIN THE PROPERTY OF THE ARCHITECT AND NO PART THEREOF MAY BE USED OR REPRODUCED IN ANY FORM WITHOUT WRITTEN PERMISSION

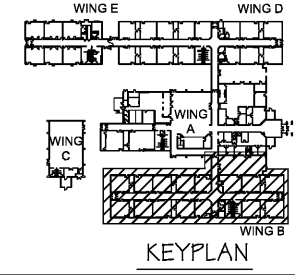
NO.	DATE	REVISIONS

CONSTRUCTION DOCUMENTS
WING B REFLECTED CEILING PLAN
SCALE: 1/8" = 1'-0"
SHEET
A3.02
7 OF 30
FILE: 18.10
DATE: 12/14/18

- CEILING LEGEND**
- NEW ALUMINUM GRID W/ NEW LAY-IN VINYL FACED GYPSUM CEILING TILE TO REMAIN
 - EXISTING 2X2 GRID W/ EXISTING LAY-IN ACOUSTICAL CEILING TILE TO REMAIN
 - EXISTING 2X2 GRID W/ NEW LAY-IN ACOUSTICAL CEILING TILE
 - LOCATION WHERE AN EXISTING EMERGENCY LIGHT WAS INSTALLED (REMOVED IN DEMOLITION PHASE). INSTALL NEW LAY-IN ACOUSTICAL CEILING TILE IN EXISTING GRID
 - NEW HVAC SUPPLY GRILLE
 - NEW HVAC RETURN GRILLE
 - EXISTING CEILING MOUNTED EXT SIGN TO REMAIN
 - EXISTING CEILING MOUNTED SPEAKER TO REMAIN
 - EXISTING CEILING MOUNTED SMOKE DETECTOR TO REMAIN
 - EXISTING WIRELESS ACCESS POINT TO REMAIN
 - EXISTING POWER POLE THRU CEILING TO REMAIN
 - EXISTING SECURITY CAMERA TO REMAIN
 - EXISTING CEILING MOUNTED PROJECTOR PLATE TO REMAIN
 - EXISTING CEILING MOUNTED PROJECTOR POST TO REMAIN
 - EXISTING SPINKLER HEAD TO REMAIN
 - NEW CEILING MOUNTED UNIT HEATER IN EXISTING GRID
 - LIGHT FIXTURE TO BE DEMOLISHED, REMOVE WIRING BACK TO NEAREST J-BOX OR KE-USE FOR NEW LIGHTS
 - NEW 1X4, 2X4, OR 2X2 LIGHT FIXTURE INSTALLED IN EXISTING GRID (EXCEPT WHERE NOTED ON PLANS)
 - NEW WALL MOUNTED LIGHT FIXTURE
 - NEW CLG MOUNTED LIGHT FIXTURE IN EXTG GRID
 - NEW SURFACE MOUNT LIGHT EXTERIOR LIGHT FIXTURE
 - NEW EXTERIOR RECESSED LIGHT FIXTURE IN HARD CEILING



WING B REFLECTED CEILING PLAN
1
AS.02



Order Plans @ **WWW.LDLINE.COM**