

HVAC & LIGHTING REPLACEMENT AT
ALLATOONA ELEMENTARY SCHOOL
 4150 NEW HOPE CHURCH ROAD
 ACWORTH, GEORGIA 30102
 FOR THE BARTOW COUNTY SCHOOL SYSTEM, DR. PHILLIP PAGE, SUPERINTENDENT
 CARTERSVILLE, GEORGIA

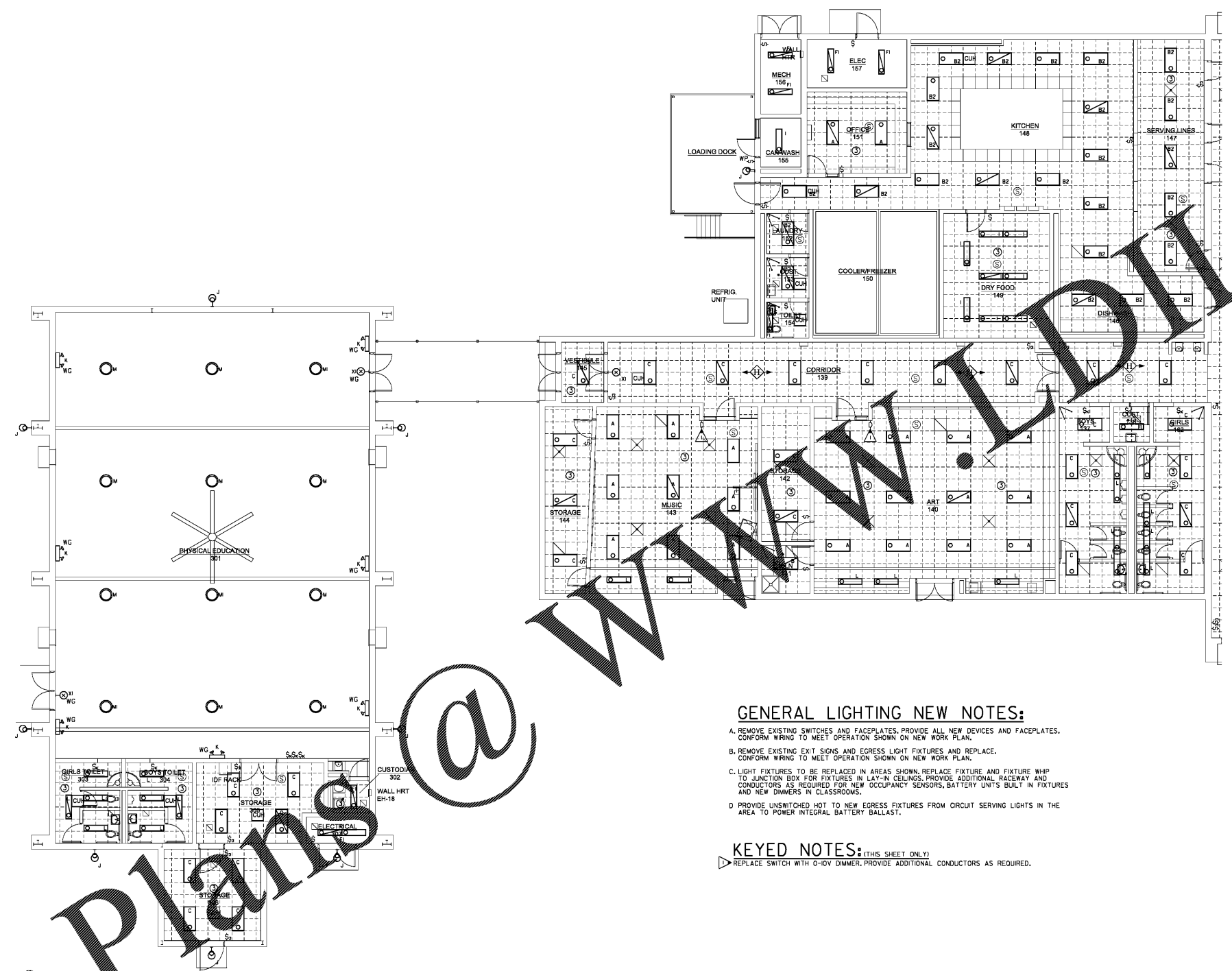


THESE DOCUMENTS, AS INSTRUMENTS OF SERVICE, REPRESENT THE SOLE PROPERTY OF DELOACH ARCHITECTS AND NO PART THEREOF MAY BE USED OR REPRODUCED IN ANY FORM WITHOUT WRITTEN PERMISSION

NO.	REVISIONS	DATE

CONSTRUCTION DOCUMENTS

FLOOR PLAN WING C - LIGHTING
 SHEET
E2.2
 22 OF 32
 FILE: 18.08
 DATE: 12/14/18



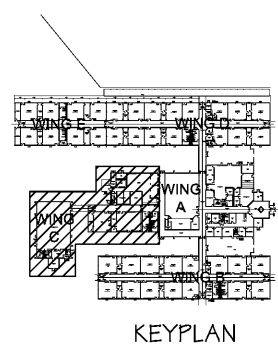
GENERAL LIGHTING NEW NOTES:

- A. REMOVE EXISTING SWITCHES AND FACEPLATES, PROVIDE ALL NEW DEVICES AND FACEPLATES. CONFORM WIRING TO MEET OPERATION SHOWN ON NEW WORK PLAN.
- B. REMOVE EXISTING EXIT SIGNS AND EGRESS LIGHT FIXTURES AND REPLACE. CONFORM WIRING TO MEET OPERATION SHOWN ON NEW WORK PLAN.
- C. LIGHT FIXTURES TO BE REPLACED IN AREAS SHOWN, REPLACE FIXTURE AND FIXTURE WHP TO JUNCTION BOX FOR FIXTURES IN LAY-IN CEILINGS. PROVIDE ADDITIONAL RACEWAY AND CONDUCTORS AS REQUIRED FOR NEW OCCUPANCY SENSORS, BATTERY UNITS BUILT IN FIXTURES AND NEW DIMMERS IN CLASSROOMS.
- D. PROVIDE UNSWITCHED HOT TO NEW EGRESS FIXTURES FROM CIRCUIT SERVING LIGHTS IN THE AREA TO POWER INTEGRAL BATTERY BALLAST.

KEYED NOTES: (THIS SHEET ONLY)

- ▷ REPLACE SWITCH WITH 0-10V DIMMER, PROVIDE ADDITIONAL CONDUCTORS AS REQUIRED.

FLOOR PLAN WING C - LIGHTING
 E2.2 SCALE: 1/8"=1'-0"



Order Plans @ WWW.DLine.com