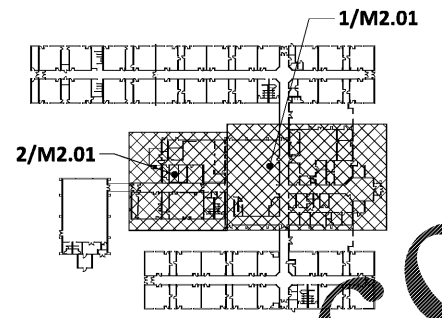


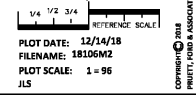
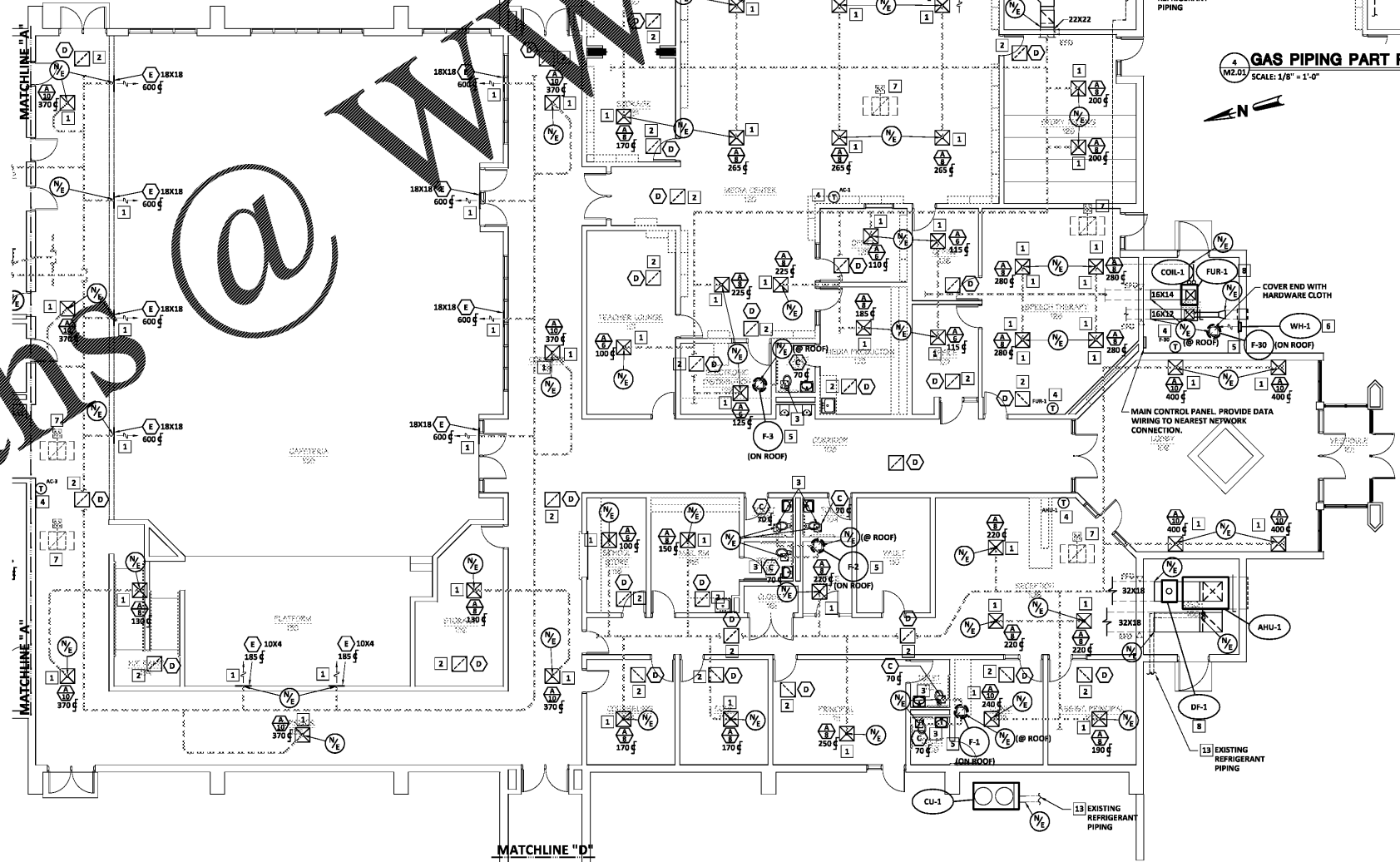
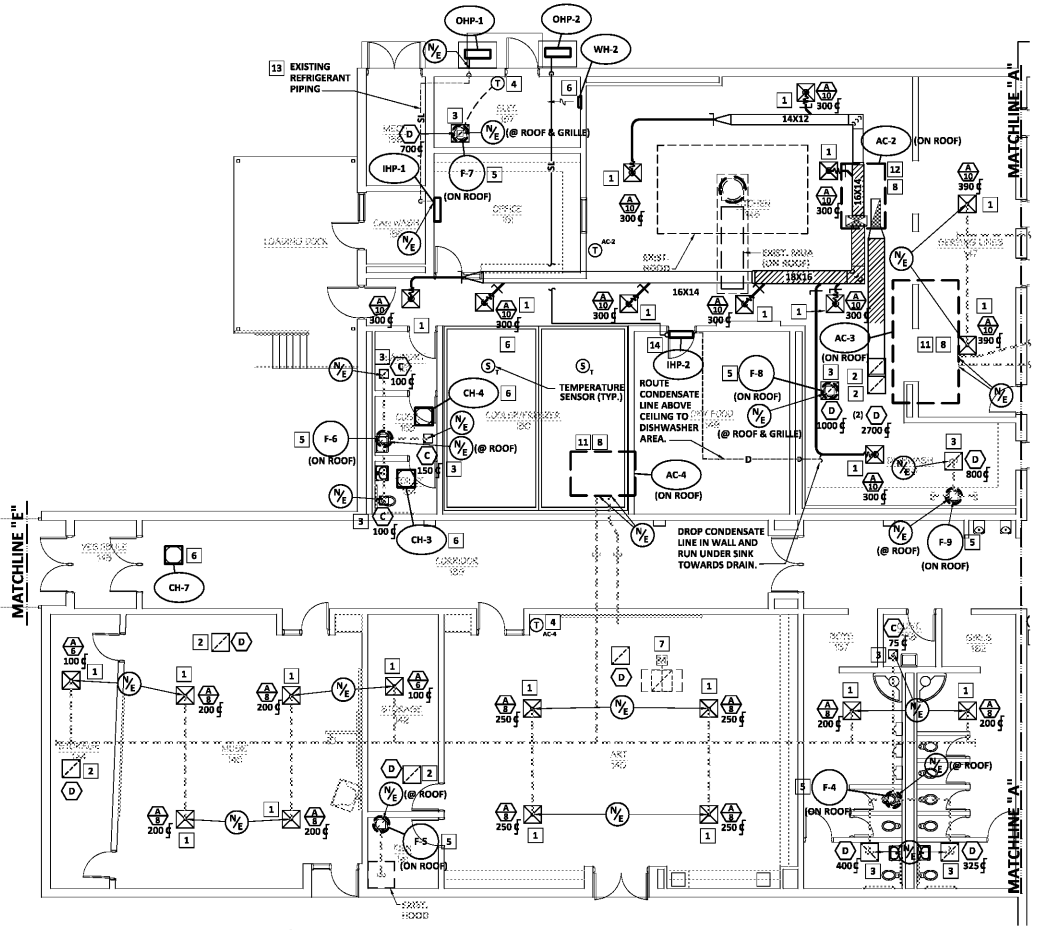
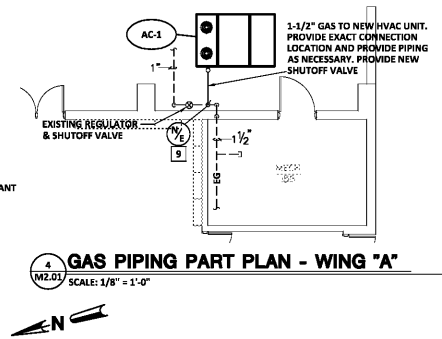
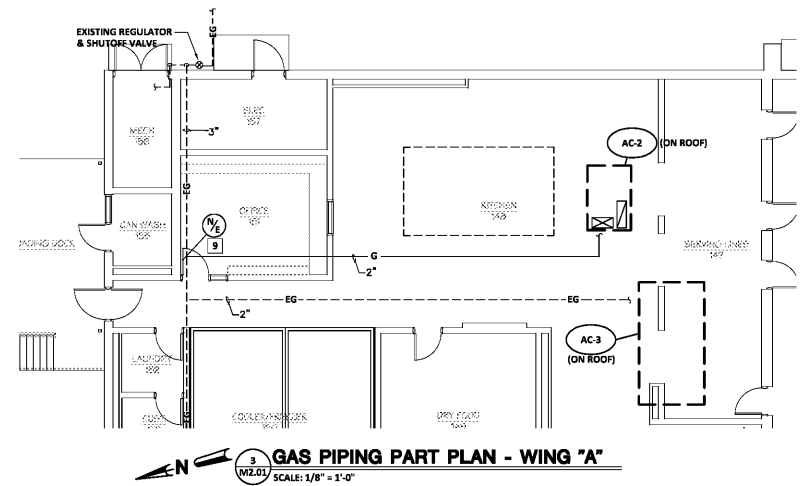
**FRUIT, FORD & ASSOCIATES, INC.**  
**CONSULTING ENGINEERS**  
 101 IRVING STREET, SUITE 3A  
 ALBUQUERQUE, GEORGIA 3001  
 404.238.7100 • FAX 404.238.7101

THESE DOCUMENTS, AS SERVICE, REMAIN THE PROPERTY OF THE ARCHITECT AND NO PART THEREOF MAY BE USED OR REPRODUCED IN ANY FORM WITHOUT WRITTEN PERMISSION

NO.	REVISIONS	DATE



- KEY NOTES (THIS SHEET ONLY):**
- 1 PROVIDE NEW SUPPLY DIFFUSER IN EXISTING LOCATION.
  - 2 PROVIDE NEW RETURN GRILLE IN EXISTING LOCATION.
  - 3 PROVIDE NEW EXHAUST GRILLE IN EXISTING LOCATION.
  - 4 PROVIDE NEW THERMOSTAT IN EXISTING LOCATION.
  - 5 PROVIDE NEW FAN, AND ASSOCIATED ACCESSORIES, FROM UNIT TRANSITION AS REQUIRED TO CONNECT TO EXISTING PIPING.
  - 6 PROVIDE NEW ELECTRIC HEATERS.
  - 7 CLOSE RELIEF DAMPER AND SEAL OFF OPENING IN PLENUM.
  - 8 CONNECT EXISTING GAS PIPING TO NEW HVAC EQUIPMENT. RECONNECT TYPE B VENT AND REPLACE EXISTING SHUTOFF VALVE WITH NEW SHUTOFF VALVE. FIELD VERIFY EXACT SIZE AND LOCATION.
  - 9 CONNECT NEW GAS PIPING TO EXISTING GAS PIPING. FIELD VERIFY EXACT SIZE AND LOCATION.
  - 10 ROUTE CONDENSATE LINE TO THE EDGE OF THE UNIT. DISCHARGE TOWARD PATIO DRAIN.
  - 11 MODIFY EXISTING EQUIPMENT RAILS TO SUPPORT NEW HVAC UNIT.
  - 12 MOUNT NEW HVAC UNIT ON ROOF CURB.
  - 13 PURGE, CLEAN AND REUSE EXISTING REFRIGERANT PIPING WHERE POSSIBLE.
  - 14 PROVIDE LINE HIDE KIT AND CONDENSATE PUMP FOR NEW INDOOR HEAT PUMP.



Order Plans @ [WWW.DIMLINE.COM](http://WWW.DIMLINE.COM)