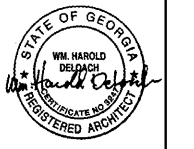


HYAC & LIGHTING REPLACEMENT AT
ALLATOONA ELEMENTARY SCHOOL

4150 NEW HOPE CHURCH ROAD, ACONORTH, GA 30102
FOR THE BARTOW COUNTY SCHOOL SYSTEM - DR. PHILIP D. PAGE, SUPERINTENDENT
CARTERSVILLE, GEORGIA



THESE DOCUMENTS, AS INSTRUMENTS OF SERVICE, REMAIN THE PROPERTY OF THE ARCHITECT AND NO PART THEREOF MAY BE USED OR REPRODUCED IN ANY FORM WITHOUT WRITTEN PERMISSION

DATE	
REVISIONS	
NO.	

CONSTRUCTION DOCUMENTS

WING C, D, E REFLECTED CEILING PLAN

SCALE: 1/8" = 1'-0"

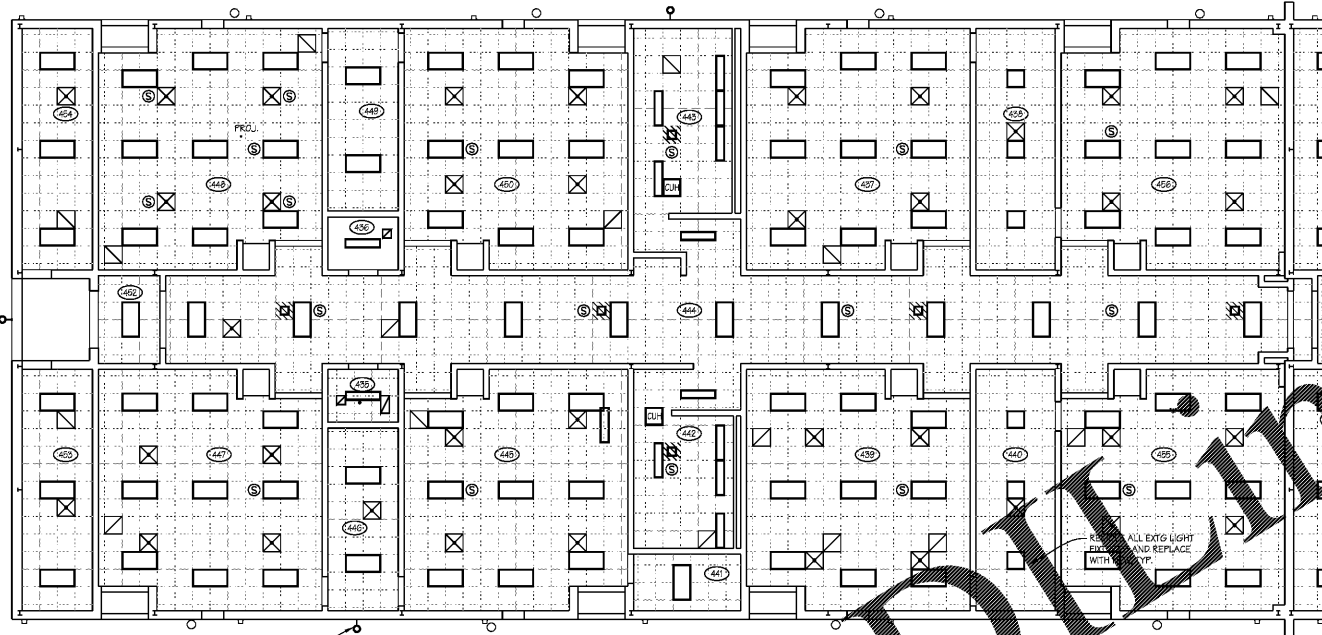
SHEET

A3.03

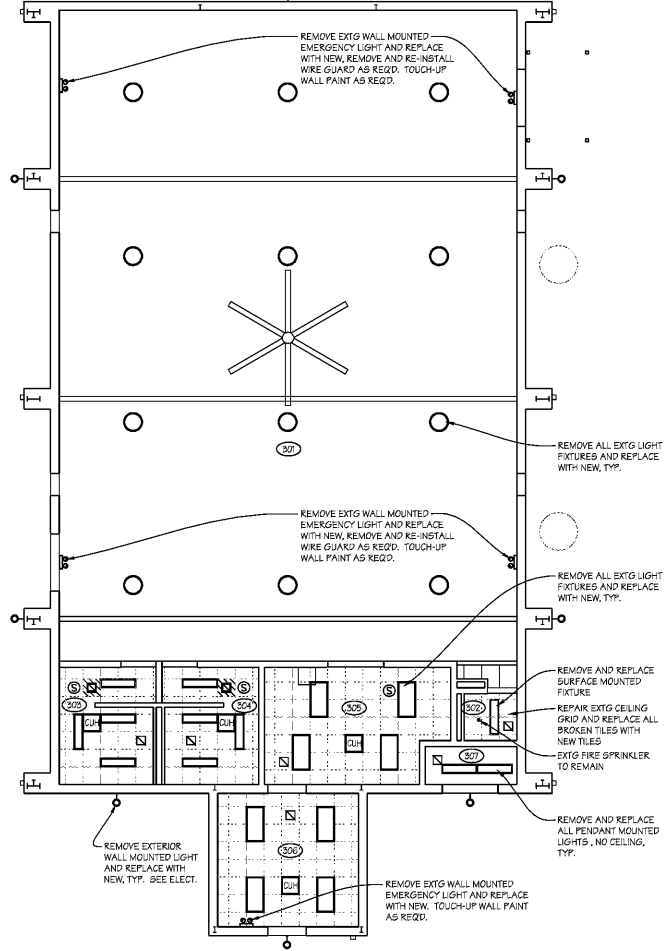
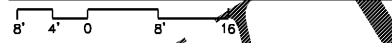
8 OF 32

FILE: 18.08

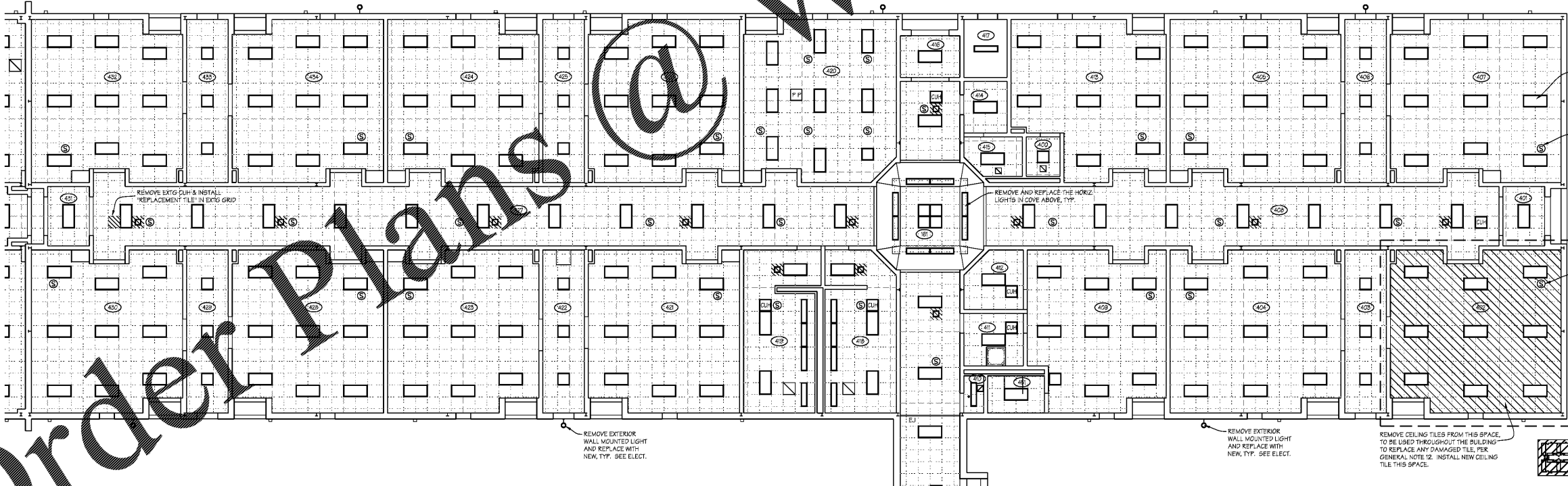
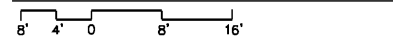
DATE: 12/14/18



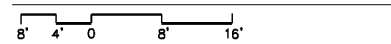
WING E REFLECTED CEILING PLAN



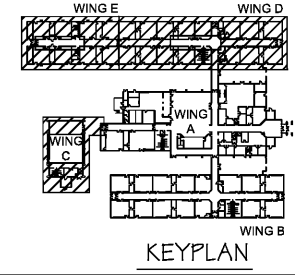
WING C REFLECTED CEILING PLAN



WING D REFLECTED CEILING PLAN



- CEILING LEGEND**
- NEW ALUMINUM VINYL FACED GYP. CEILING TILE TO REMAIN
 - EXISTING GYP. CEILING TILE TO REMAIN
 - EXISTING 2'X2' GRID W/ NEW GYP. IN ACOUSTICAL CEILING TILE
 - LOCATION WHERE AN EXISTING EMERGENCY LIGHT WAS INSTALLED (REMOVED IN DEMOLITION PHASE). INSTALL NEW LAY-IN ACOUSTICAL CEILING TILE IN EXISTING GRID
 - NEW HVAC SUPPLY GRILLE
 - NEW HVAC RETURN GRILLE
 - EXISTING CEILING MOUNTED EXIT SIGN TO REMAIN
 - EXISTING CEILING MOUNTED SPEAKER TO REMAIN
 - EXISTING CEILING MOUNTED SMOKE DETECTOR TO REMAIN
 - EXISTING WIRELESS ACCESS POINT TO REMAIN
 - EXISTING POWER POLE THRU CEILING TO REMAIN
 - EXISTING SECURITY CAMERA TO REMAIN
 - EXISTING CEILING MOUNTED PROJECTOR PLATE TO REMAIN
 - EXISTING CEILING MOUNTED PROJECTOR POST TO REMAIN
 - EXISTING SPRINKLER HEAD TO REMAIN
 - NEW CEILING MOUNTED HEATER IN EXISTING GRID
 - LIGHT FIXTURE TO BE DEMOLISHED. REMOVE WIRING BACK TO NEAREST J-BOX OR RE-USE FOR NEW LIGHTS
 - NEW TYP. 2'X4' OR 2'X2' LIGHT FIXTURE INSTALLED IN EXISTING GRID (EXCEPT WHERE NOTED ON PLANS)
 - NEW WALL MOUNTED LIGHT FIXTURE
 - NEW CLS MOUNTED LIGHT FIXTURE IN EXISTING GRID
 - NEW SURFACE MOUNT LIGHT EXTERIOR LIGHT FIXTURE
 - NEW EXTERIOR RECESSED LIGHT FIXTURE IN HARD CEILING



KEYPLAN

Order Plans @ WWW.LDLINE.COM