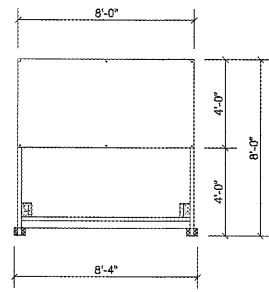
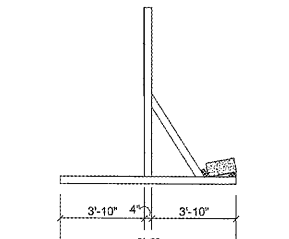


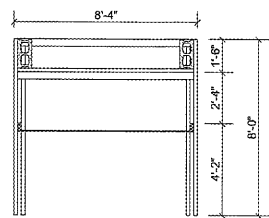
Order Plans @ WWW.LDILLING.COM



FRONT

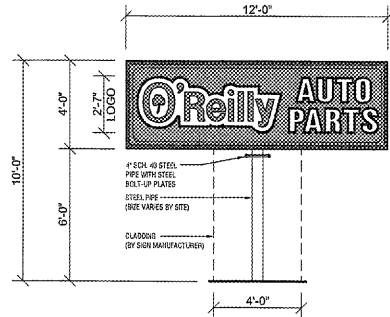


SIDE



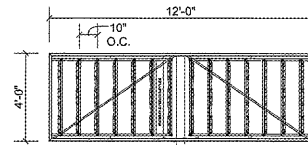
TOP

1 COMING SOON
TEMPORARY CONSTRUCTION SIGN
SG1.2 SCALE: 1/4" = 1'-0"



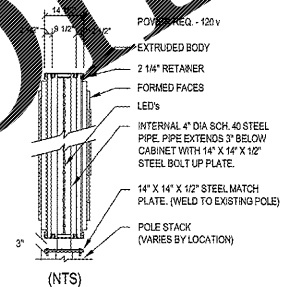
*O'Reilly Cloud Logo with "AP" channel letters on 7" (h) x 1" (d) wireways. Wireways join to: OAP RED
*O'Reilly Cloud Logo is formed polycarb with double embossment with 2nd surface painted graphics. Paint
match to: Green (PMS 342c), Black and White
*AP to have formed polycarb caps with 1/4" letter "rumps", Black 6" aluminum coil returns, 2nd surface
Black and White paint, WHITE LED illumination.

2 GROUND SIGN ELEVATION
SG1.2 SCALE: 1/4" = 1'-0"



- A) 14-1/2" deep extruded cabinet with support structure and 2 1/4" retainers
- B) Internal steel pipe with external steel bolt-up plate(s).
- C) GE-Tetra PowerStrip DS White LED's. Part #GEWH0SPS6 (71090) 6 LED's per module (3 LED's per side) on GE-Tetra Mounting Rails. Part #GE0ESRL06. Rails on 10" centers. 42 total modules.
- D) GE-Tetra Power Supplies. Part #GEPS24-180U 24 Volt 90-305VAC 5000HZ Load capacity: 28 modules per power supply. Total of two (2) per display.
- E) Fabricated aluminum internal power supply wireway.

- A) Faces are formed out of lexan with 2" draw. "O'Reilly" graphics are double embossed, "Auto Parts" copy is double embossed with painted graphics on 2nd surface. Graphics to match PMS 200c Red, PMS 342c Green Black and White.
- B) Extruded cabinet with 2 1/4" retainers, internal steel pipe with external steel bolt-up plate(s).
- C) Vertical GE (GEWH0SPS6) White DS LED illumination, paint cabinet to match Black. Internal power cabinet exposure calculation: C90
- D) Cabinet to be installed with bolt-up plates - paint to: Gloss Black



(NTS)

GENERAL NOTES

- A) REFER TO PROJECT MANUAL FOR ADDITIONAL REQUIREMENTS.
- B) CONTACT OWNER'S OR TENANT'S DESIGNATED PROJECT ADMINISTRATOR FOR QUESTIONS OR CLARIFICATIONS.
- C) PERMANENT SIGNAGE OWNER FURNISHED AND INSTALLED. REFER TO SCOPE OF WORK SCHEDULE. SIGNAGE GRAPHICS PROVIDED FOR REFERENCE ONLY (N.I.C.) AND CONTRACTOR TO PROVIDE WITH SPECIFIC PROJECT CONSTRUCTION CONDITIONS.
- D) SITE SIGN FOUNDATIONS AND ROUGH-IN ELECTRICAL TO BE PROVIDED BY CONTRACTOR.
- E) REQUIRED GOVERNMENTAL PERMITS FOR PERMANENT SITE SIGNAGE TO BE PROVIDED BY SIGN COMPANY PER OWNER'S DIRECTION (N.I.C.).
- F) *COMING SOON TEMPORARY CONSTRUCTION SIGN TO BE PROVIDED BY GENERAL CONTRACTOR APPLIED SIGNAGE GRAPHICS TO BE OWNER FURNISHED AND GENERAL CONTRACTOR INSTALLED. LOCATE TEMPORARY CONSTRUCTION SIGN ON SITE SO AS TO BE VISIBLE TO PUBLIC FROM RIGHT-OF-WAY.

SPECIAL NOTE:
SIGN DESIGN BY OTHERS. REFER TO SIGN CONTRACTOR'S SHOP DRAWINGS FOR ADDITIONAL REQUIREMENTS.

SITE SIGN SCHEDULE

TEMPORARY CONSTRUCTION SIGN:
TYPE: COMING SOON
DETAIL: REFER TO 1/SG1.2

SITE SIGN:
TYPE: POLE (4'H X 12'W X 10' OAH)
DETAIL: REFER TO 2/SG1.2

NOTE:
REFER TO SHEETS S1.2 FOR FOUNDATION SYSTEM STRUCTURAL REQUIREMENTS.



1736 East Sunshine, Suite 440
Springfield, Missouri 65804
417.862.2058
Fax: 417.862.3263
e-mail: architect@sterlytschneider.com

STERLY
SCHNEIDER
&
ASSOCIATES, INC.
architects & planners
AIA

PROJECT:
NEW O'REILLY AUTO PARTS STORE
U.S. HWY 231
MURFREESBORO, TN #5
SITE SIGNAGE DETAILS

O'Reilly AUTO PARTS
CORPORATE OFFICES
233 SOUTH PATTERSON
SPRINGFIELD, MISSOURI 65802
(417) 862-2074 TELEPHONE

COMM # 4219
DATE: 8-17-18
REVISION
DATE: