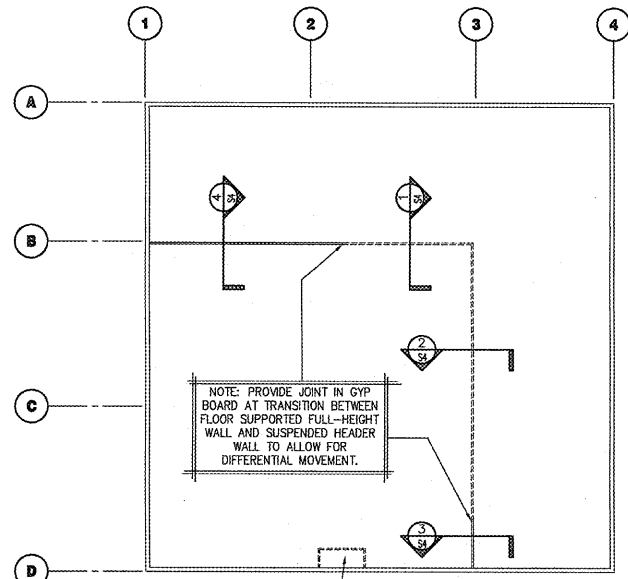


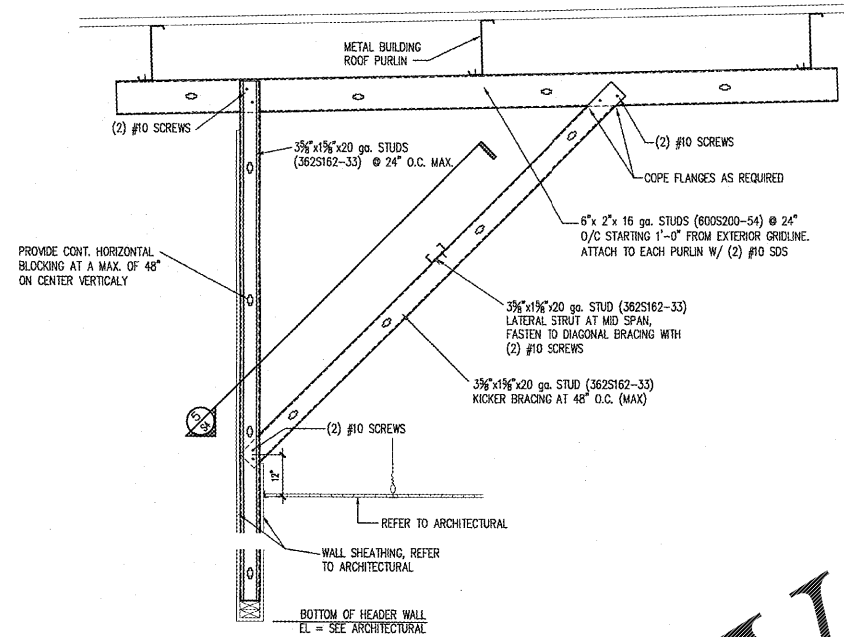
RECEIVED
AUG 16 2018
36 SANSING ST SUITE 417
SPRINGFIELD, MO 65901



PROVIDE 16ga COLD-FORMED STEEL (CFS) FRAMING AT ENTRY LOCATION WHERE APPLICABLE. ALIGN FRAMING MEMBERS WITH METAL STUDS OVER STOREFRONT (SPACING NOT TO EXCEED 24" O.C.) ALL CFS-TO-CFS CONNECTIONS TO BE A MINIMUM OF (3) #8 SDS. REFER TO ARCHITECTURAL SECTIONS FOR FRAMING PROFILES AND MEMBER DEPTHS.

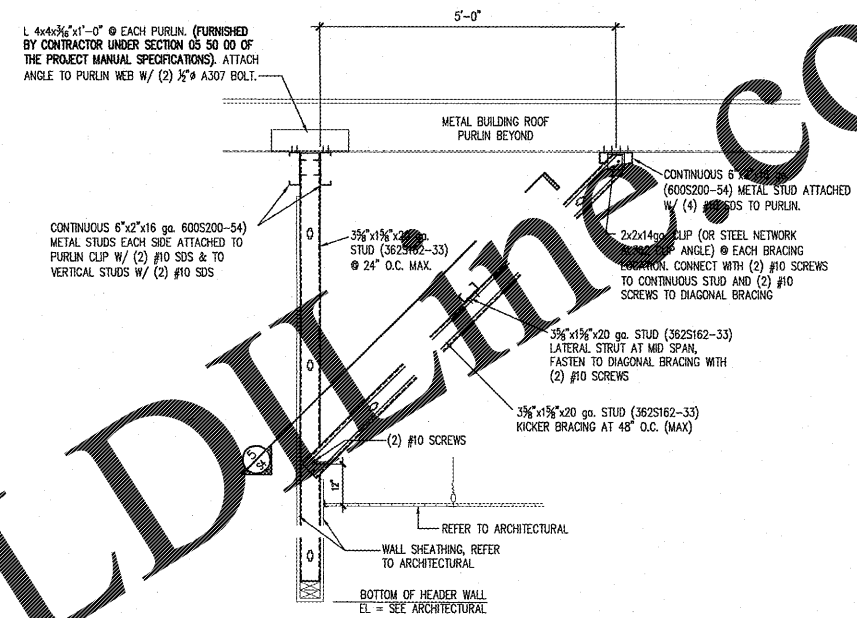
STRUCTURAL PLAN

SCALE: NONE



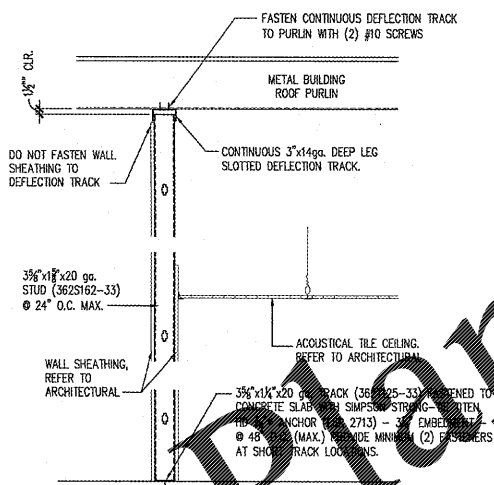
1 SECTION

S4 SCALE: 3/4" = 1'-0"



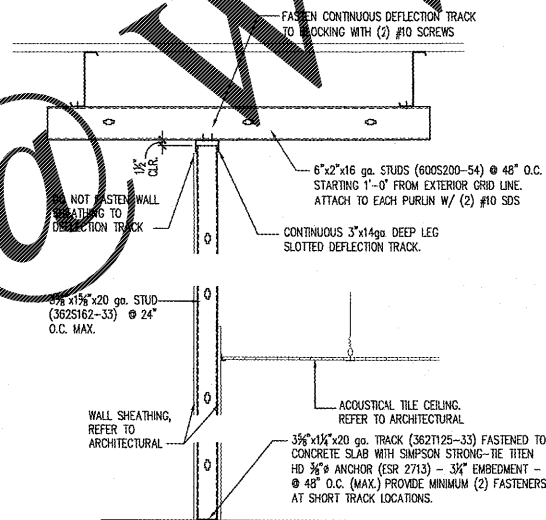
2 SECTION

S4 SCALE: 3/4" = 1'-0"



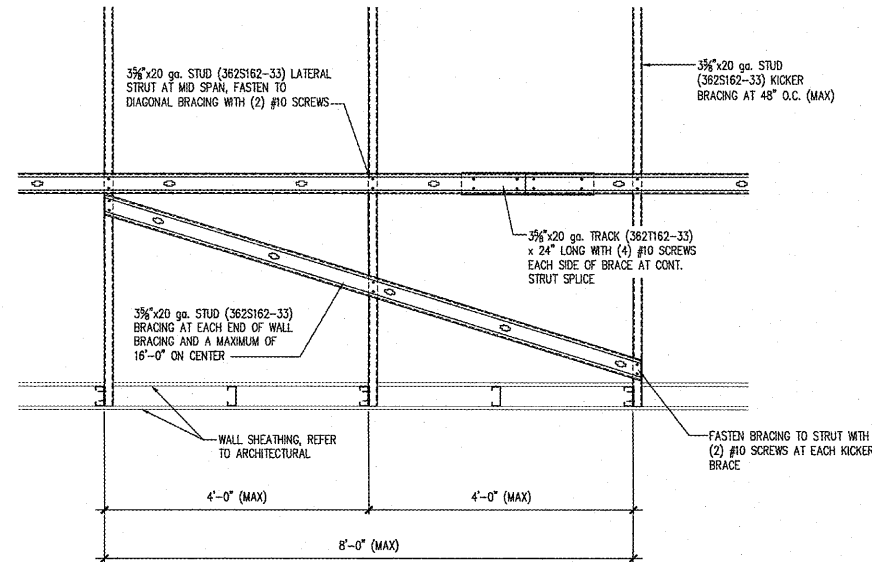
3 SECTION

S4 SCALE: 3/4" = 1'-0"



4 SECTION

S4 SCALE: 3/4" = 1'-0"



5 SECTION

S4 SCALE: 3/4" = 1'-0"

Order Plans



1756 East Sunningdale Ave 417
Springfield, Missouri 65901
417.862.3268
417.862.3269
Fax: 417.862.3268
e-mail: architect@ostertyschneider.com

ESTERLY SCHNEIDER & ASSOCIATES, INC.
AIA architects & planners

PROJECT:
NEW O'REILLY AUTO PARTS STORE
U.S HWY 231
MURFREESBORO, TN #5
FRAMING DETAILS

O'Reilly AUTO PARTS
CORPORATE OFFICES
233 SOUTH PATTERSON
SPRINGFIELD, MISSOURI 65802
(417) 862-2674 TELEPHONE

COMM # 4219
DATE: 8-17-18
REVISION
DATE:

J.S. Smith Consulting
Aaron D. Smith P.E. 00107193
1801 W 32nd St. Bldg B Ste 104 * JOPLIN, MISSOURI 64804
P.O. Box 8102 * JOPLIN, MISSOURI 64802
PHONE: 417-824-0444 * FAX: 417-824-0430