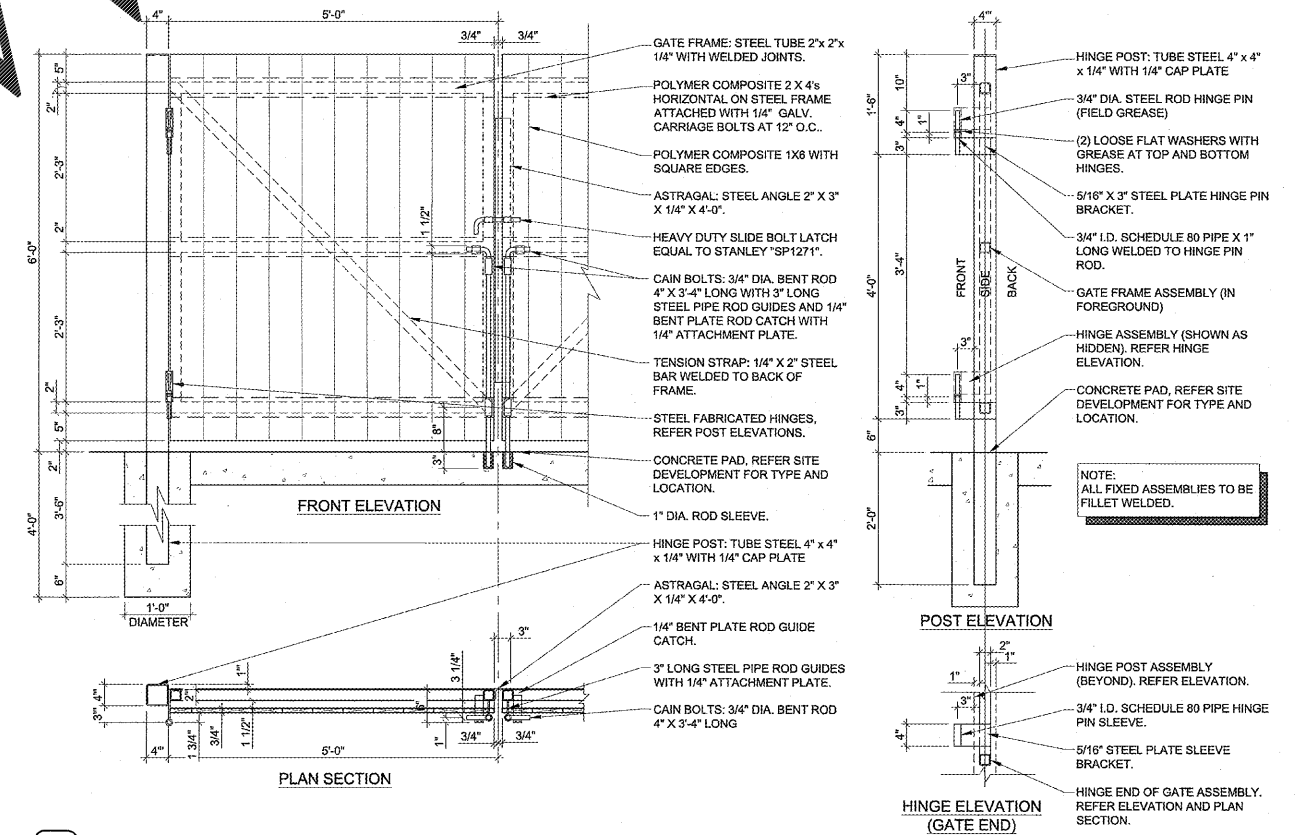
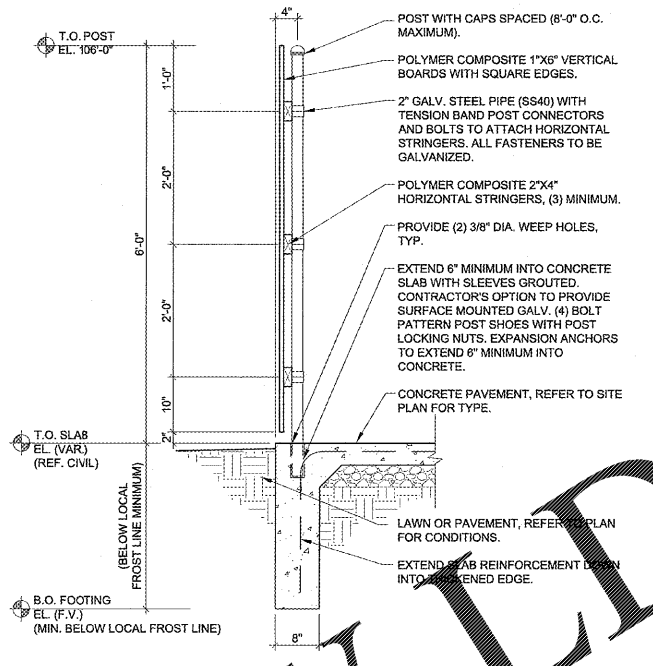
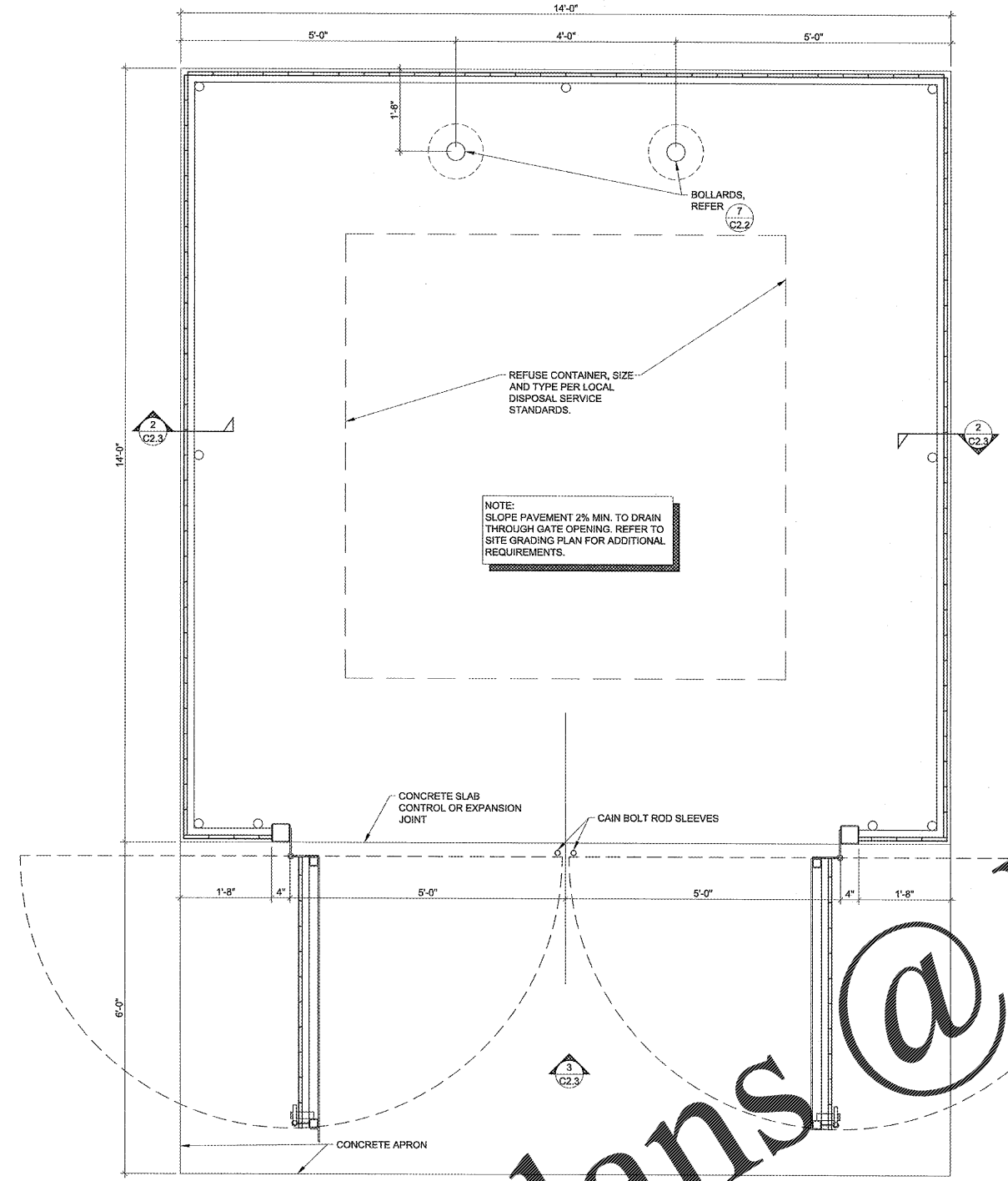


REVIEW
AUG 21 2018
1736 EAST SUNSHINE ST. SUITE 417



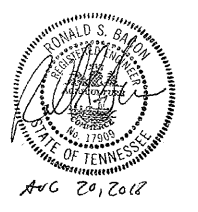
GENERAL NOTES

- (A) REFER TO PROJECT MANUAL FOR ADDITIONAL REQUIREMENTS.
- (B) DIMENSIONS ARE TO ROUGH FACE OF CONCRETE, FRAMING, OR CENTER LINE OF STRUCTURE UNLESS OTHERWISE INDICATED.
- (C) REFER TO CIVIL DRAWINGS FOR ADDITIONAL REQUIREMENTS.
- (D) REFER TO ARCHITECTURAL EXTERIOR FINISH SCHEDULE FOR MATERIAL TYPES, COLORS, AND FINISHES. UNLESS OTHERWISE INDICATED PROVIDE FINISHES AS FOLLOWS:
 1. ALL NON-GALVANIZED METAL PARTS TO BE PRIMED AND PAINTED (2) COATS SHERWIN WILLIAMS SW700 PERMANENT COAT.
 2. POLYMER COMPOSITE MATERIAL COLOR TO BE EQUAL TO SELECT SERIES "PEBBLE GREY". FINAL COLOR TO BE SELECTED BY OWNER FROM MANUFACTURER'S STANDARD SAMPLES.

BACON FARMER WORKMAN
ENGINEERING & TESTING, INC.

500 SOUTH 170 STREET | 400 NORTH COURT STREET | 1016 DUGLASS DRIVE
FRASER, KY 40302 | MADISON, KY 40363 | MURFREESBORO, KY 40154
PHONE - 270.413.1895 | PHONE - 518.987.9199 | PHONE - 270.763.7307

www.bfwengineers.com | COPYRIGHT © 2011 - BACON FARMER WORKMAN ENGINEERING & TESTING, INC.



1736 East Sunshine St. Suite 417
Springfield, Missouri 65704
417.862.3232
417.862.3558
Fax: 417.862.3232
e-mail: architect@esterlyshneider.com

ESTERLY SCHNEIDER & ASSOCIATES, INC.
AIA architects & planners

PROJECT:
NEW O'REILLY AUTO PARTS STORE
U.S. HWY 231
MURFREESBORO, TN #5

SITE DETAILS

O'Reilly AUTO PARTS

CORPORATE OFFICES
235 SOUTH PATTERSON
SPRINGFIELD, MISSOURI 65802
(417) 862-2674 TELEPHONE

COMM #	4219
DATE:	8-17-18
REVISION	
DATE:	