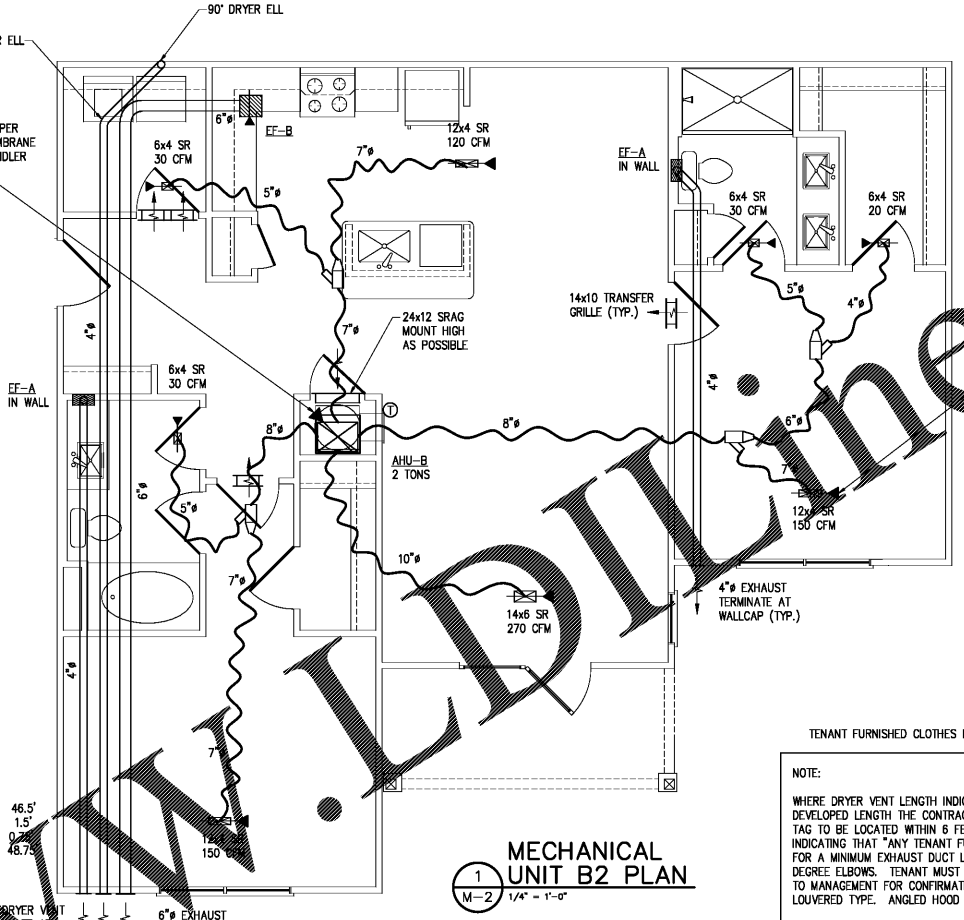


2  
M-2 1/4" = 1'-0"

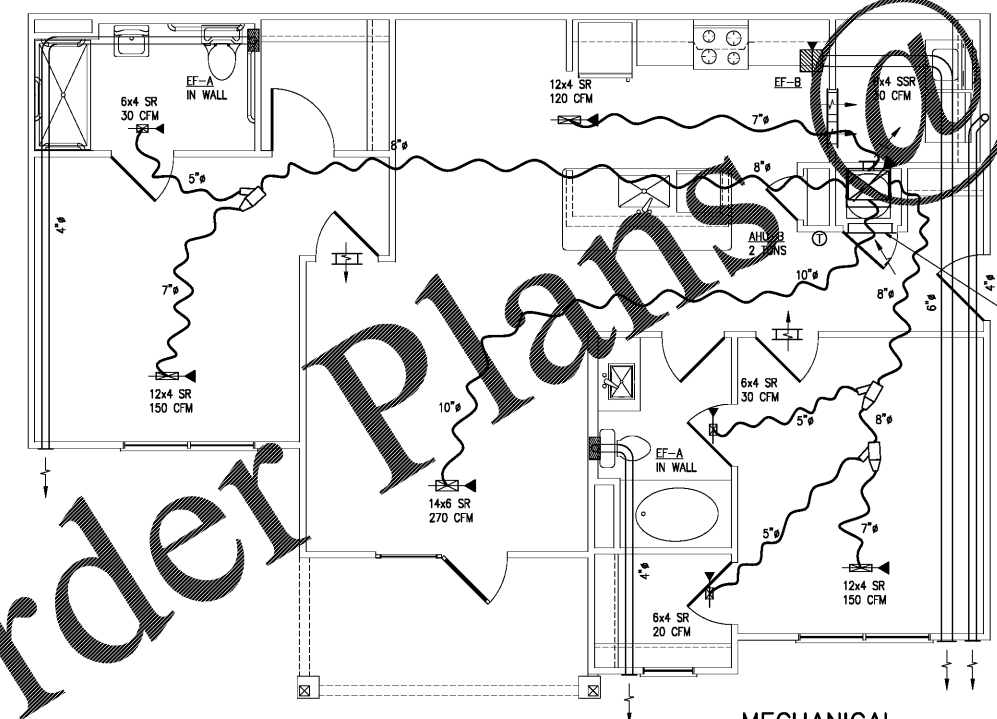
DRYER VENT LENGTH:  
VENT LENGTH 25.0'  
90 DEG. ELBOW 5.0'  
45 DEG. ELBOW 2.5'  
TOTAL LENGTH = 32.5'

DRYER VENT LENGTH:  
VENT LENGTH 46.5'  
90 DEG. DRYER ELL 1.5'  
45 DEG. DRYER ELL 0.5'  
TOTAL LENGTH = 48.5'



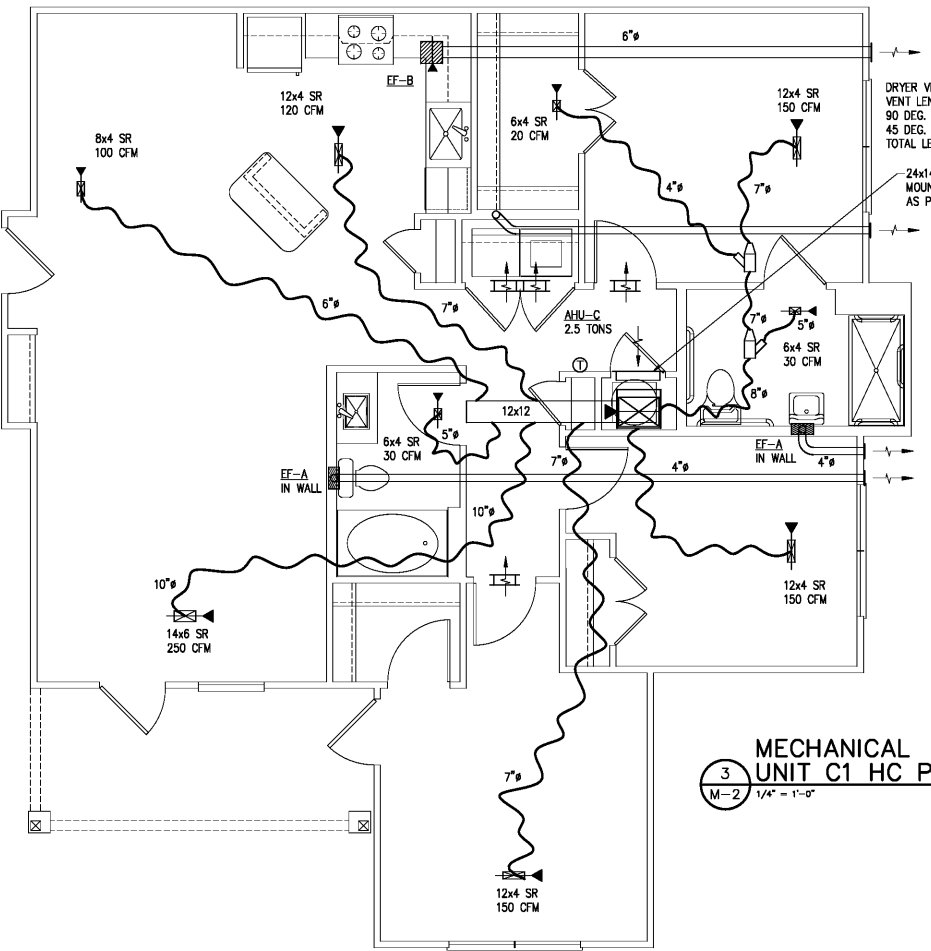
1  
M-2 1/4" = 1'-0"

NOTE:  
WHERE DRYER VENT LENGTH INDICATED ON DRAWINGS EXCEEDS 35'-0" DEVELOPED LENGTH THE CONTRACTOR SHALL INSTALL PERMANENT LABEL OR TAG TO BE LOCATED WITHIN 6 FEET OF THE DRYER EXHAUST CONNECTION INDICATING THAT "ANY TENANT FURNISHED CLOTHES DRYER MUST PROVIDE FOR A MINIMUM EXHAUST DUCT LENGTH OF 50 FEET WITH ZERO (0) 90 DEGREE ELBOWS. TENANT MUST PROVIDE DRYER INSTALLATION INSTRUCTIONS TO MANAGEMENT FOR CONFIRMATION." VENT HOOD SHALL BE BOX OR LOUVERED TYPE. ANGLED HOOD NOT ACCEPTABLE.



5  
M-1 1/4" = 1'-0"

DRYER VENT LENGTH:  
VENT LENGTH 32.0'  
90 DEG. ELBOW 5.0'  
45 DEG. ELBOW 2.5'  
TOTAL LENGTH = 39.5'



3  
M-2 1/4" = 1'-0"

DRYER VENT LENGTH:  
VENT LENGTH 25.0'  
90 DEG. ELBOW 5.0'  
45 DEG. ELBOW 2.5'  
TOTAL LENGTH = 32.5'

Order Plans @

WWW.LDOnline.com



**ENGLISH & ASSOCIATES ARCHITECTS, INC**  
3084 MERCER UNIVERSITY DRIVE, SUITE 100  
ATLANTA, GEORGIA 30341  
DENGLISH@ENGLISHASSOCIATESINC.COM

JOB PROGRESS:  
ITEM DATE

REVISIONS:  
DATE NO.

This drawing, as an instrument of service, is and shall remain the property of the Architect. Of Record and shall not be published, reproduced or used in any way without the written permission of the Architect. Of Record. DO NOT scale the drawing. All questions to be submitted as a formal request for information to the Architect. Of Record.

**ALEXANDRIA**  
AN APARTMENT COMMUNITY  
FOR  
BOBO FAMILY GROUP  
HUNTSVILLE, ALABAMA

JOB NUMBER:  
DRAWN BY: RK  
CHECKED BY: RK

MECHANICAL UNIT PLANS

SHEET NO.

M-2