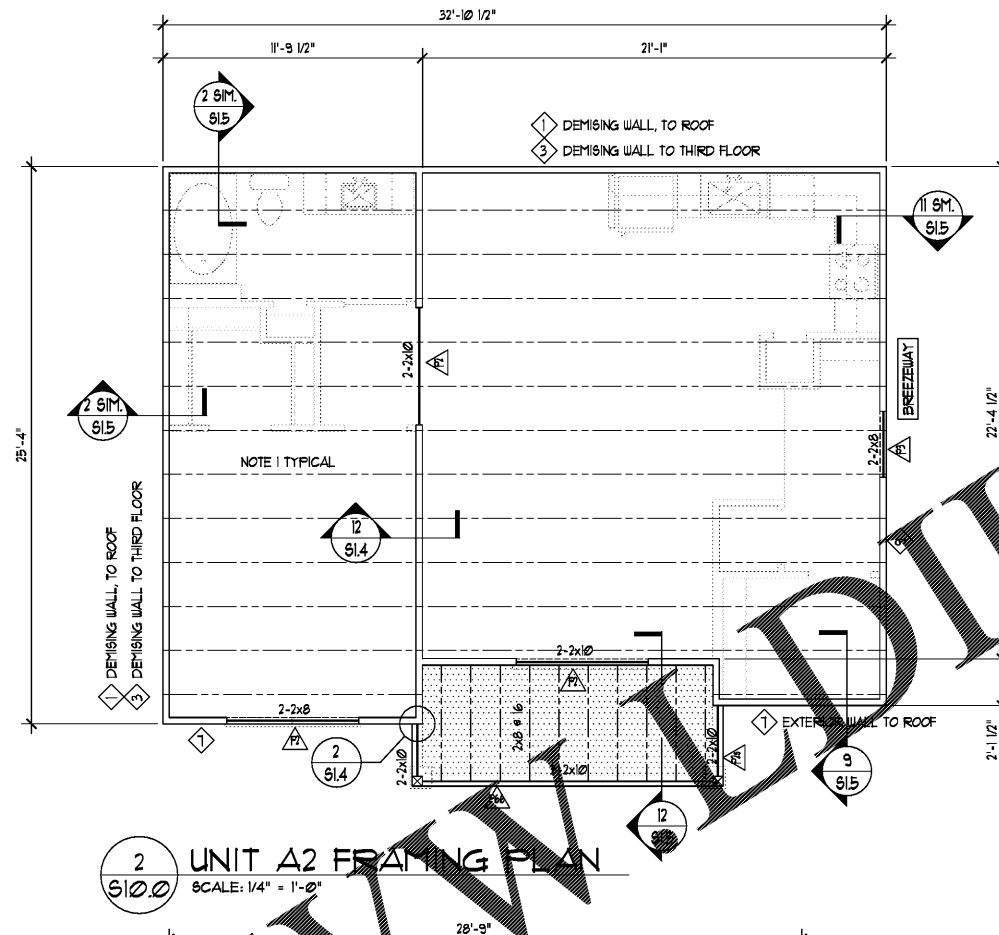
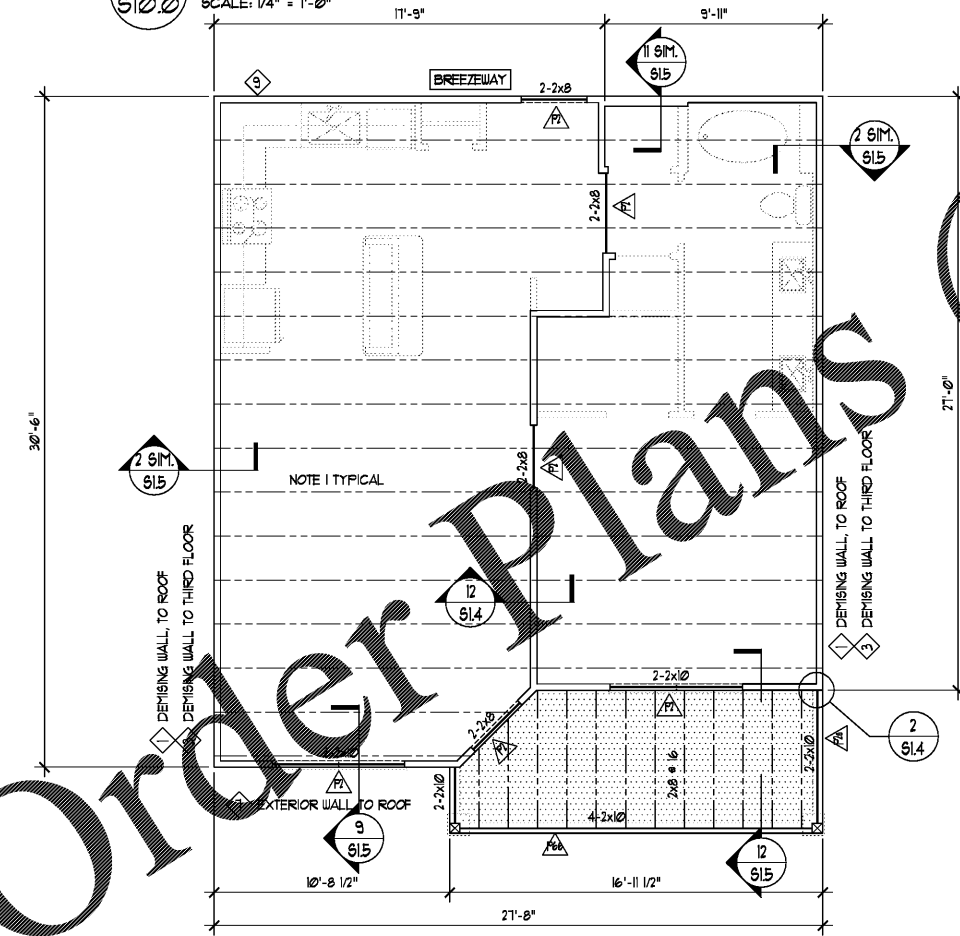


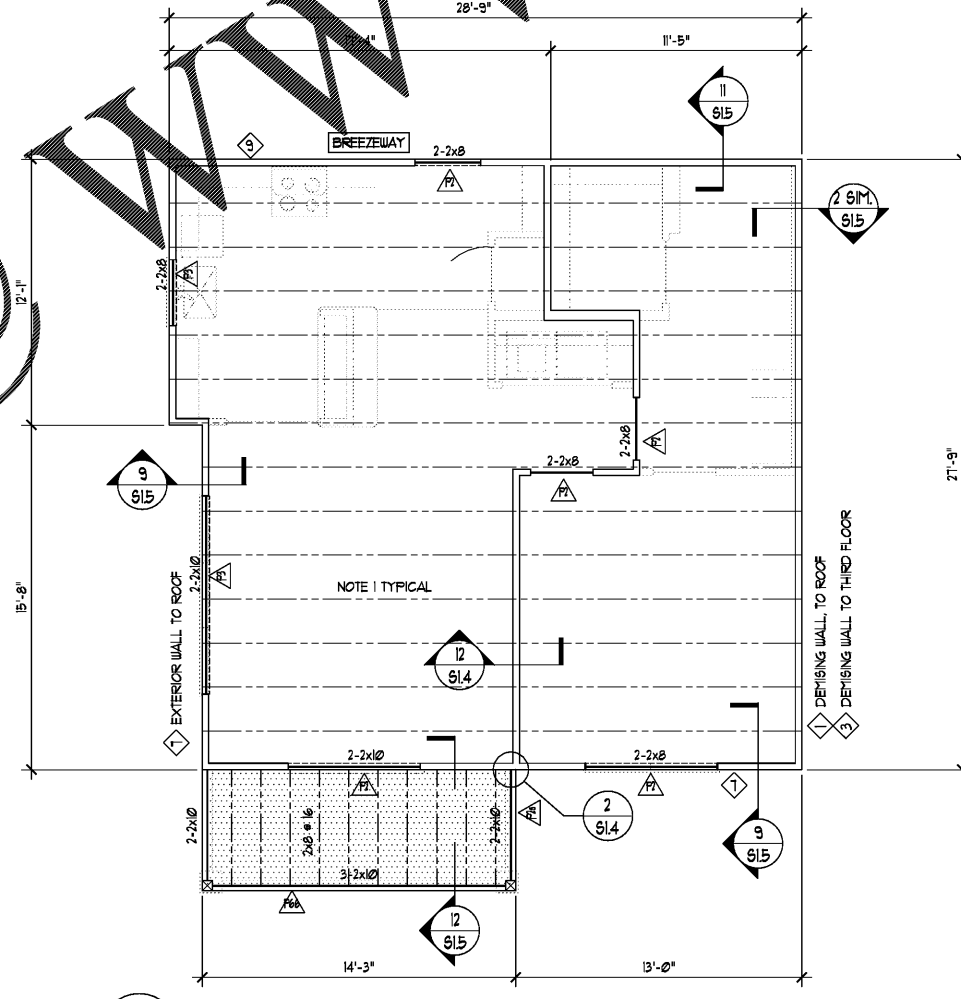
1 UNIT A1 FRAMING PLAN
SCALE: 1/4" = 1'-0"



2 UNIT A2 FRAMING PLAN
SCALE: 1/4" = 1'-0"

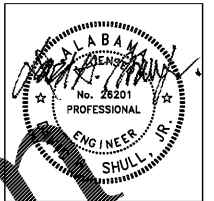


3 UNIT A3 FRAMING PLAN
SCALE: 1/4" = 1'-0"



4 UNIT A4 FRAMING PLAN
SCALE: 1/4" = 1'-0"

- FRAMING PLAN NOTES**
- FRAMED FLOOR ASSEMBLY SHALL BE 1'-1 1/2" TOTAL THICKNESS W/ 3/4" GYPCRETE CEMENTITIOUS TOPPING OVER SOUND ISOLATION MAT OVER 3/4" TONGUE AND GROOVE OSB OR PLYWOOD FLOOR DECKING OVER 18" DEEP PRE-ENGINEERED PLATE-CONNECTED WOOD TRUSSES.
 - SEE ARCHITECTURAL DRAWINGS FOR GENERAL FRAMED FLOOR LAYOUTS, SLOPES, DIMENSIONS, AND SECTIONS NOT SHOWN.
 - FOR GENERAL NOTES AND DESIGN LOADS SEE SHEETS 501 THRU 503.
 - SEE SHEET 513 FOR LOAD BEARING WALL SCHEDULE AND STUD NOTES. SEE SHEET 512 FOR POST/JAMB SCHEDULE AND POST NOTES.
 - △ DENOTES POST MARK.
 - SEE NOTES NEAR WALL MARK SEE SHEET 515 FOR SHEAR WALL SCHEDULE AND RELATED NOTES.
 - TYPICAL DECK FRAMING SHALL BE CONSERVATIVE 2x DIMENSIONAL LUMBER W/ FT. 2x6 FLAT OPEN DECKING.
 - PROVIDE SAME BEAMS NOTED ON THIS SHEET AT ROOF LEVEL FRAMING UNLESS NOTED.



ENGLISH & ASSOCIATES ARCHITECTS, INC.
3084 MERCER UNIVERSITY DRIVE, SUITE 100
ATLANTA, GEORGIA 30341
DENGGLISH@ENGLISHASSOCIATESINC.COM

JOB PROGRESS:
ITEM: 100% Submittal
DATE: 12.28.18

REVISIONS:
TAG: DATE:

This drawing, as an instrument of service, is and shall remain the property of the Architect of Record and shall not be published, reproduced or used in any way without the written permission of the Architect of Record. DO NOT scale this drawing. All questions to be submitted as a formal request for information to the Architect of Record.

ALEXANDRIA
AN APARTMENT COMMUNITY
FOR
Bobo Family Group
HUNTSVILLE, ALABAMA

JOB NUMBER:
DRAWN BY: AV
CHECKED BY: DHS
UNIT FRAMING PLAN

SHEET NO.
S10.0

DAVID H. SHULL, JR., P.E.
ALABAMA REGISTRATION #: PE 26201
IN ASSOCIATION WITH
SHULL & ASSOCIATES, INC.
ALABAMA CERTIFICATE OF AUTHORIZATION CA 3177 E
127 CHURCH STREET NE SUITE 100 MARIETTA, GA 30060
(404) 459-0585 WWW.SHULLASSOCIATES.COM