

ENGLISH & ASSOCIATES
ARCHITECTS, INC.

3084 MERCER UNIVERSITY DRIVE, SUITE 100
ATLANTA, GEORGIA 30341
DENGGLISH@ENGLISHASSOCIATESINC.COM

JOB PROGRESS:

ITEM: DATE:

REVISIONS:

TAG: DATE:

This drawing, as an instrument of service, is and shall remain the property of the Architect of Record and shall not be published, reproduced or used in any way without the written permission of the Architect of Record. DO NOT scale this drawing. All questions to be submitted as a formal request for information to the Architect of Record.

ALEXANDRIA
AN APARTMENT COMMUNITY
FOR
Bobo Family Group
HUNTSVILLE, ALABAMA

JOB NUMBER:

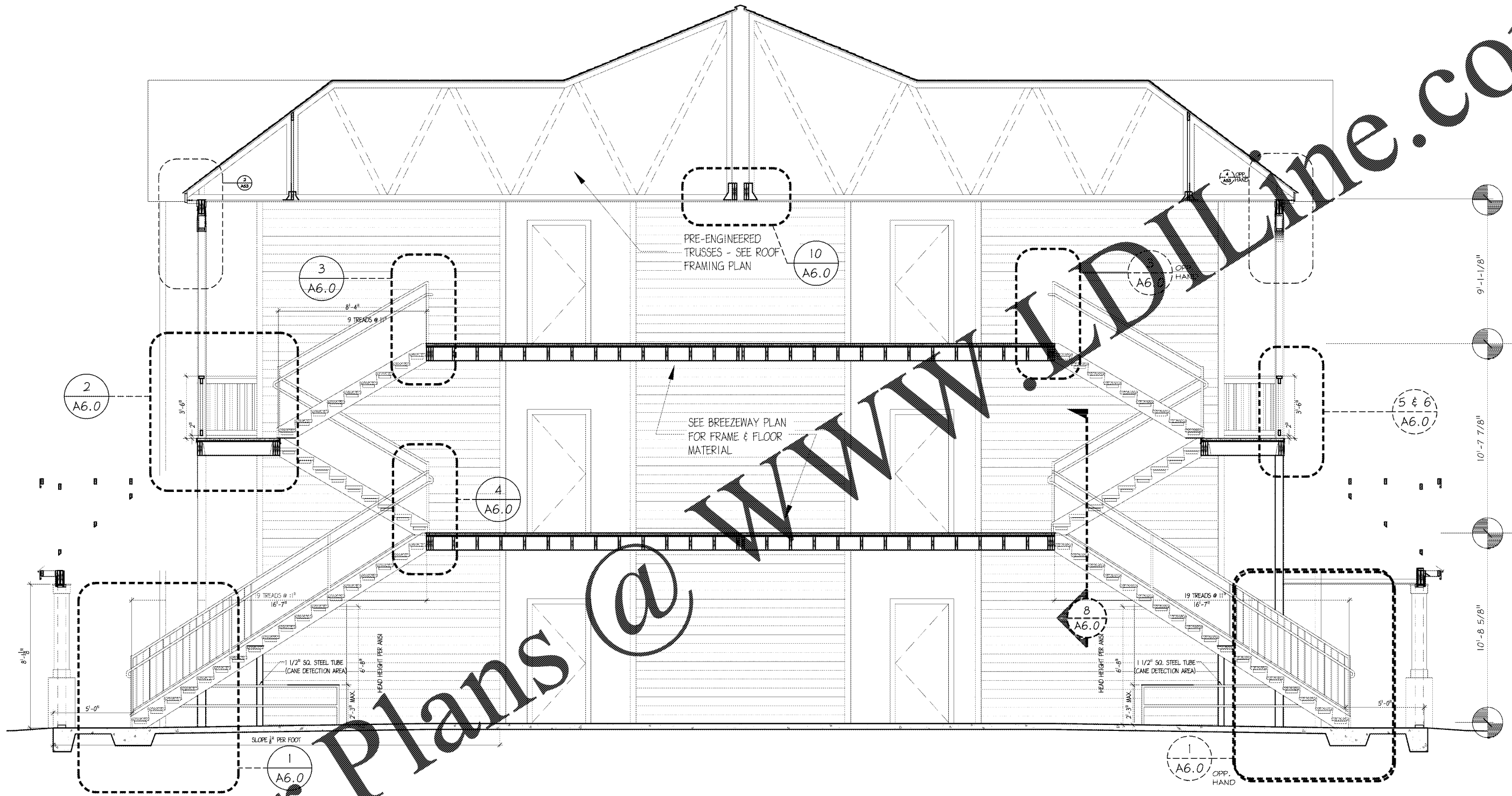
DRAWN BY:

CHECKED BY:

STAIR & LANDING DETAILS

SHEET NO.

A6.0



GENERAL NOTE:
INSULATING MATERIALS INSTALLED SHALL HAVE A FLAME SPREAD INDEX OF NOT MORE THAN 25 AND SMOKE DEVELOPED INDEX OF 45 FOR EXPOSED CONDITIONS AND BE TESTED IN ACCORDANCE WITH ASTM E 84. MATERIALS USED SHALL BE NON-COMBUSTIBLE OR SHALL HAVE A FLAME SPREAD INDEX OF NOT MORE THAN 25 AND SMOKE DEVELOPED INDEX OF NOT MORE THAN 50 WHEN TESTED IN ACCORDANCE WITH ASTM E 84

NOTES:
1. ALL APARTMENTS TO BE SPRINKLERED IN ACCORDANCE WITH NFPA 13R. PROVIDE SHOP DRAWINGS WITH AN ALABAMA ENGINEER'S STAMP FOR APPROVAL.
2. SPRINKLER COVERAGE SHALL INCLUDE BALCONIES PATIOS WITH SIDEWALL HEADS.

**** ALL RAILS AT BREEZEWAY AND AT BALCONIES SHALL MEET THE LOADING REQUIREMENTS OF THE IBC. PROVIDE STAMPED SHOP DRAWINGS AND FIELD TEST DATA CONFIRMING COMPLIANCE WITH THE IBC.**

NOTE:
ALL EXPOSED EXTERIOR WOOD MEMBERS INCLUDING FRAMING, DECKING, & RAILING SYSTEM SHALL BE PRESSURE TREATED WOOD

Over Plans @ WWW.DIYLINE.COM