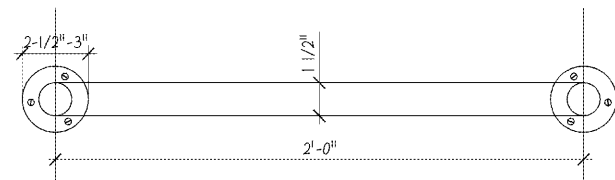
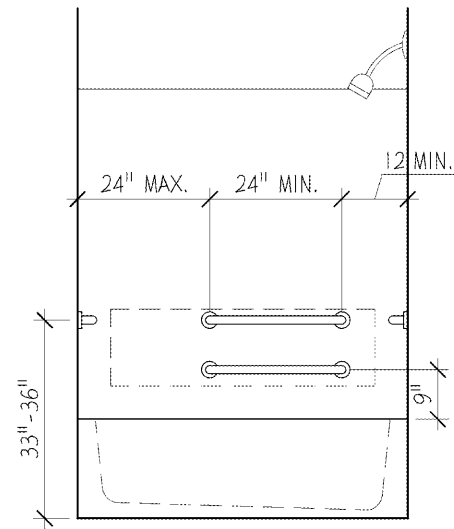


# FAIR HOUSING ACT REQUIREMENTS:

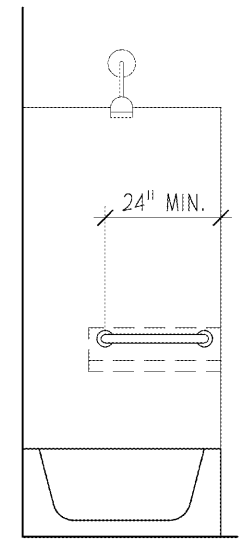
- 1 **ACCESSIBLE BUILDING ENTRANCE ON AN ACCESSIBLE ROUTE:**  
COVERED MULTIFAMILY DWELLINGS MUST HAVE AT LEAST ONE BUILDING ENTRANCE ON AN ACCESSIBLE ROUTE, UNLESS IT IS IMPRACTICAL TO DO SO BECAUSE OF TERRAIN OR UNUSUAL CHARACTERISTICS OF THE SITE. ALL BUILDINGS ARE CURRENTLY SHOWN ON AN ACCESSIBLE ROUTE.
- 2 **ACCESSIBLE AND USABLE PUBLIC AND COMMON USE AREAS:**  
PUBLIC AND COMMON USE AREAS MUST BE READILY ACCESSIBLE TO AND USABLE BY PEOPLE WITH DISABILITIES. THE LEASING OFFICE, AMENITIES AREA, MAIL KIOSK, BUILDING GROUND FLOOR BREEZEWAYS AND OTHER COMMON USE AREAS ARE ACCESSIBLE.
- 3 **USABLE DOORS:**  
ALL DOORS DESIGNED TO ALLOW PASSAGE INTO AND WITHIN ALL PREMISES MUST BE SUFFICIENTLY WIDE TO ALLOW PASSAGE BY PERSONS IN WHEELCHAIRS. THE ENTRY DOOR AND DECK DOORS SHALL BE 3'-0" DOORS WITH LEVER HARDWARE. ALL PASSAGE DOORS WITHIN THE UNIT SHALL BE 2'-10" DOORS.
- 4 **ACCESSIBLE ROUTE INTO THE THROUGH THE COVERED DWELLING UNIT:**  
THERE MUST BE AN ACCESSIBLE ROUTE INTO AND THROUGH THE DWELLING UNITS, PROVIDING ACCESS FOR PEOPLE WITH DISABILITIES THROUGHOUT THE UNIT.
- 5 **LIGHT SWITCHES, ELECTRICAL OUTLETS, THERMOSTATS AND OTHER ENVIRONMENTAL CONTROLS IN ACCESSIBLE LOCATIONS:**  
ALL PREMISES WITHIN THE DWELLING UNITS MUST CONTAIN LIGHT SWITCHES, ELECTRICAL OUTLETS, THERMOSTATS AND OTHER ENVIRONMENTAL CONTROLS IN ACCESSIBLE LOCATIONS.
- 6 **REINFORCED WALLS FOR GRAB BARS:**  
ALL PREMISES WITHIN DWELLING UNITS MUST CONTAIN REINFORCEMENTS IN BATHROOM WALLS TO ALLOW LATER INSTALLATION OF GRAB BARS AND AROUND TOILETS AND TUBS.
- 7 **USABLE KITCHENS AND BATHROOMS:**  
DWELLING UNITS MUST CONTAIN USABLE KITCHENS AND BATHROOMS SUCH THAT AN INDIVIDUAL WHO USES A WHEELCHAIR CAN MANUEVER ABOUT THE SPACE. PER REQUIREMENT 7 OF THE GUIDELINES, IF SPECIFICATION "B" IS SELECTED, ONLY



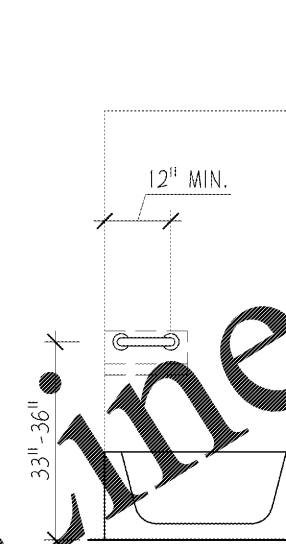
4 **GRAB BAR DETAIL**  
SCALE: N.T.S.



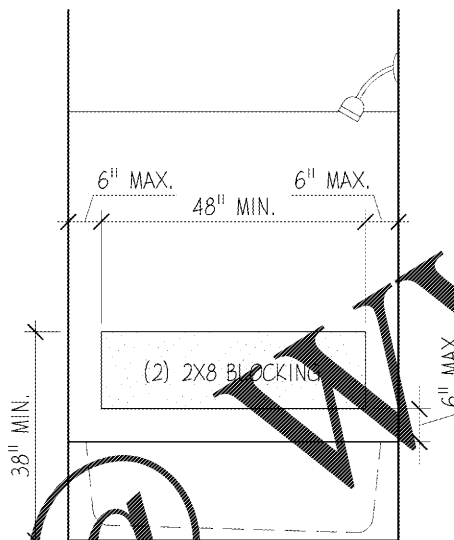
1 **GRAB BAR CONFIG.**  
SCALE: N.T.S. AT BACK WALL



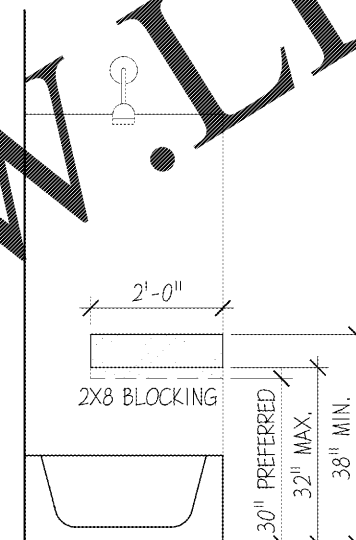
2 **GRAB BAR CONFIG.**  
SCALE: N.T.S. AT FOOT (CONTROL WALL)



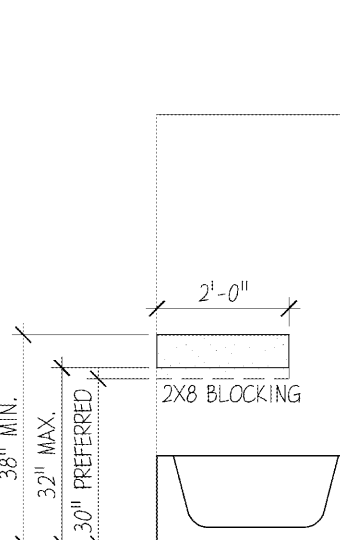
3 **GRAB BAR CONFIG.**  
SCALE: N.T.S. AT HEAD



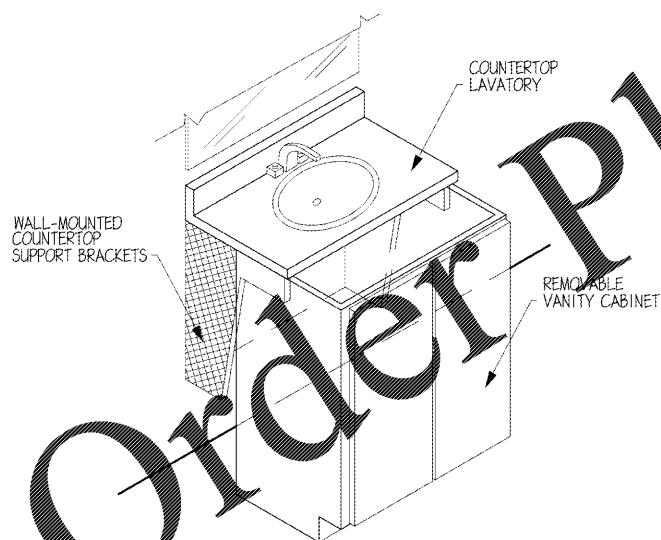
5 **BLOCKING CONFIG.**  
SCALE: N.T.S. AT BACK WALL



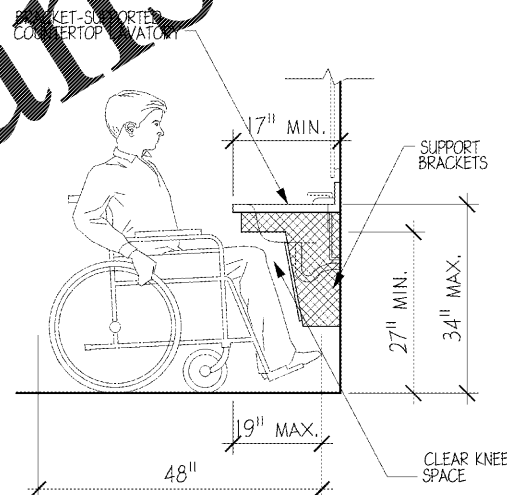
6 **BLOCKING CONFIG.**  
SCALE: N.T.S. AT FOOT (CONTROL WALL)



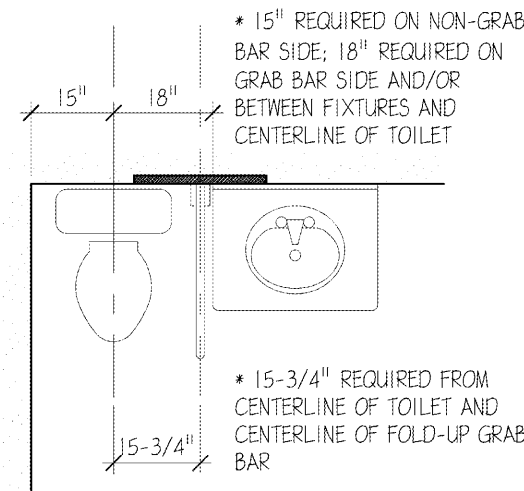
7 **BLOCKING CONFIG.**  
SCALE: N.T.S. AT HEAD



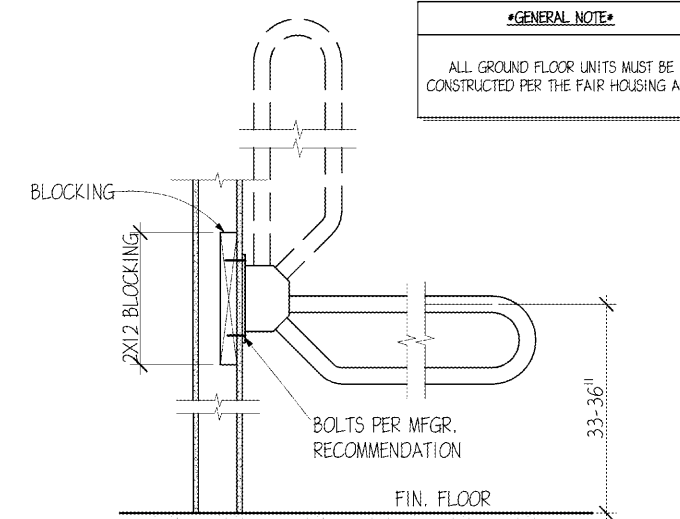
8 **REMOVABLE BASE CAB.**  
SCALE: N.T.S.



9 **REMOVABLE BASE CAB.**  
SCALE: N.T.S.



10 **FOLD DOWN GRAB BAR**  
SCALE: N.T.S.



11 **FOLD DOWN GRAB BAR**  
SCALE: N.T.S.

**\*GENERAL NOTE\***  
ALL GROUND FLOOR UNITS MUST BE CONSTRUCTED PER THE FAIR HOUSING ACT



**ENGLISH & ASSOCIATES ARCHITECTS, INC.**  
3084 MERCER UNIVERSITY DRIVE, SUITE 100  
ATLANTA, GEORGIA 30341  
DENGGLISH@ENGLISHASSOCIATESINC.COM

**JOB PROGRESS:**  
ITEM: DATE:

**REVISIONS:**  
TAG: DATE:

This drawing, as an instrument of service, is and shall remain the property of the Architect of Record and shall not be published, reproduced or used in any way without the written permission of the Architect of Record. DO NOT scale this drawing. All questions to be submitted as a formal request for information to the Architect of Record.

**ALEXANDRIA**  
AN APARTMENT COMMUNITY  
FOR  
**Bobo Family Group**  
HUNTSVILLE, ALABAMA

**JOB NUMBER:**  
**DRAWN BY:**  
**CHECKED BY:**  
**FAIR HOUSING UNIT DETAILS**  
**SHEET NO.**

**A1.9**