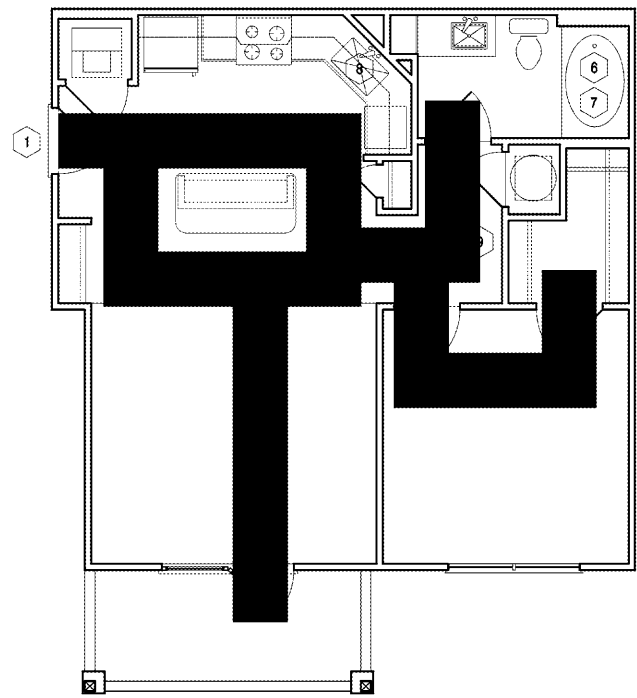


ENGLISH & ASSOCIATES
ARCHITECTS, INC.

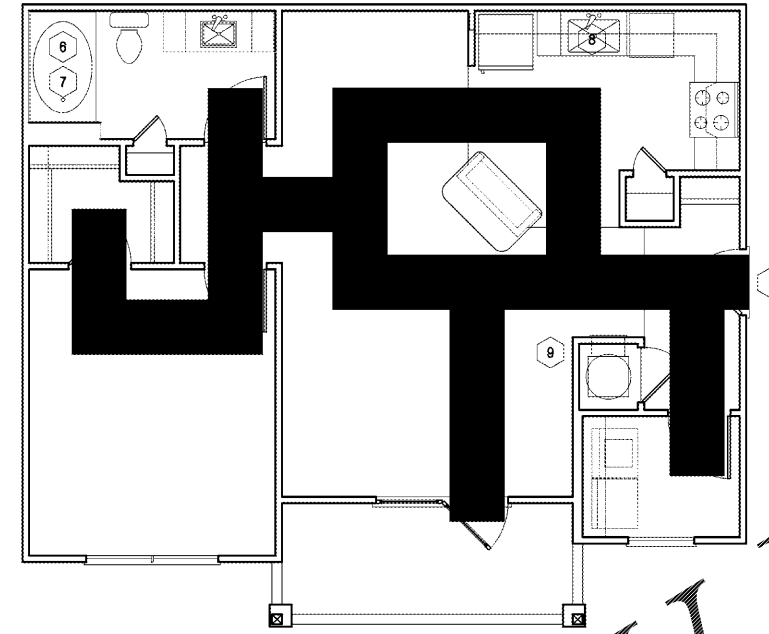
3084 MERCER UNIVERSITY DRIVE, SUITE 100
ATLANTA, GEORGIA 30341
DENGGLISH@ENGLISHASSOCIATESINC.COM

FAIR HOUSING ACT REQUIREMENTS:

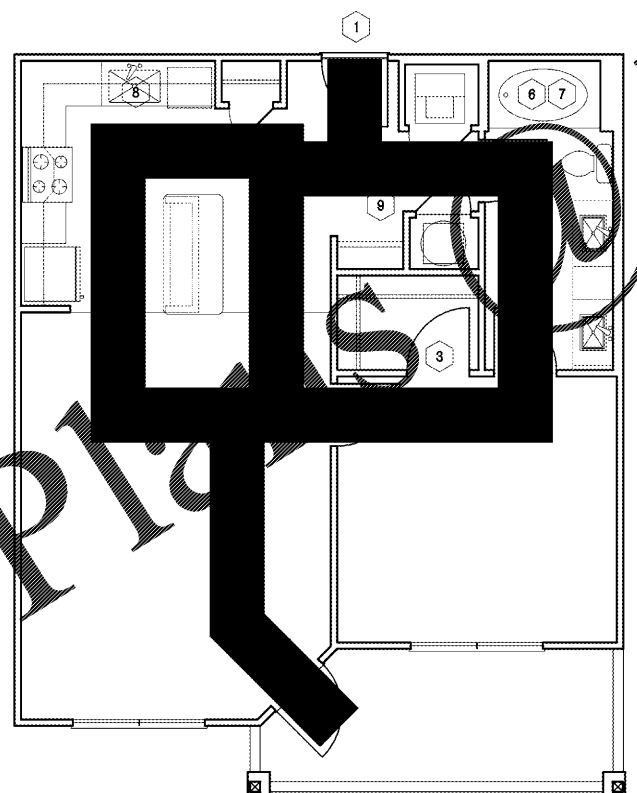
- 1 ACCESSIBLE BUILDING ENTRANCE ON AN ACCESSIBLE ROUTE:
COVERED MULTIFAMILY DWELLINGS MUST HAVE AT LEAST ONE BUILDING ENTRANCE ON AN ACCESSIBLE ROUTE, UNLESS IT IS IMPRACTICAL TO DO SO BECAUSE OF TERRAIN OR UNUSUAL CHARACTERISTICS OF THE SITE. ALL BUILDINGS ARE CURRENTLY SHOWN ON AN ACCESSIBLE ROUTE.
- 2 ACCESSIBLE AND USABLE PUBLIC AND COMMON USE AREAS:
PUBLIC AND COMMON USE AREAS MUST BE READILY ACCESSIBLE TO AND USABLE BY PEOPLE WITH DISABILITIES. THE LEASING OFFICE, AMENITIES AREA, MAIL KIOSK, BUILDING GROUND FLOOR BREEZEWAYS AND OTHER COMMON USE AREAS ARE ACCESSIBLE.
- 3 USABLE DOORS:
ALL DOORS DESIGNED TO ALLOW PASSAGE INTO AND WITHIN ALL PREMISES MUST BE SUFFICIENTLY WIDE TO ALLOW PASSAGE BY PERSONS IN WHEELCHAIRS. THE ENTRY DOOR AND DECK DOORS SHALL BE 3'-0" DOORS WITH LEVER HARDWARE. ALL PASSAGE DOORS WITHIN THE UNIT SHALL BE 2'-10" DOORS.
- 4 ACCESSIBLE ROUTE INTO THE THRESHOLD OF THE DWELLING UNIT:
THERE MUST BE AN ACCESSIBLE ROUTE INTO AND THROUGH THE DWELLING UNITS, PROVIDING ACCESS FOR PEOPLE WITH MOBILITY IMPAIRMENTS THROUGHOUT THE UNIT.
- 5 LIGHT SWITCHES, ELECTRICAL OUTLETS, THERMOSTATS AND OTHER ENVIRONMENTAL CONTROLS IN ACCESSIBLE LOCATIONS:
ALL PREMISES WITHIN THE DWELLING UNITS MUST CONTAIN LIGHT SWITCHES, ELECTRICAL OUTLETS, THERMOSTATS AND OTHER ENVIRONMENTAL CONTROLS IN ACCESSIBLE LOCATIONS.
- 6 REINFORCEMENT FOR GRAB BARS:
ALL PREMISES WITHIN DWELLING UNITS MUST CONTAIN REINFORCEMENTS IN BATHROOM WALLS TO ALLOW LATER INSTALLATION OF GRAB BARS AND AROUND TOILETS AND TUBS.
- 7 USABLE KITCHENS AND BATHROOMS:
DWELLING UNITS MUST CONTAIN USABLE KITCHENS AND BATHROOMS SUCH THAT AN INDIVIDUAL WHO USES A WHEELCHAIR CAN MANEUVER ABOUT THE SPACE. PER REQUIREMENT 7 OF THE GUIDELINES, IF SPECIFICATION "B" IS SELECTED, ONLY
- 8 REMOVABLE KITCHEN SINK BASE CABINET:
DWELLING UNITS MUST CONTAIN A REMOVABLE KITCHEN SINK BASE CABINET, MAX. HEIGHT 36" AFF. EXTEND FLOORING MATERIAL UNDER CABINET BASE, WALL BEHIND AND INSIDE OF CABINET SHALL BE FINISHED. INSTALL 6-1/2" DEEP STAINLESS STEEL KITCHEN SINK WITH CENTER-REAR MOUNTED DRAIN.
- 9 THERMOSTAT MOUNTING HEIGHT:
DWELLING UNITS MUST CONTAIN THERMOSTATS MOUNTED @ 48" AFF MAX.



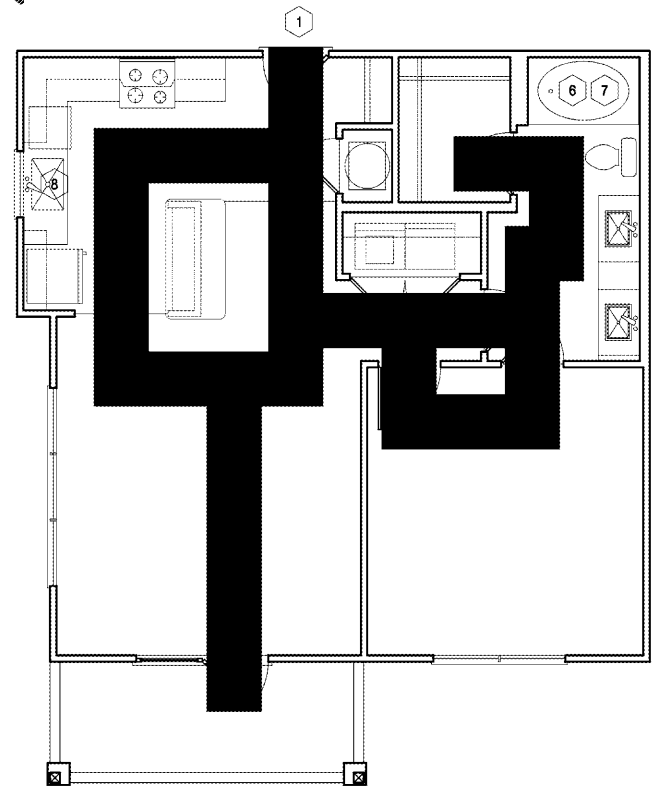
1 UNIT A1 - FAIR HOUSING
A1.7 SCALE: 1/4" = 1'-0"



2 UNIT A2 - FAIR HOUSING
A1.7 SCALE: 1/4" = 1'-0"



3 UNIT A3 - FAIR HOUSING
A1.7 SCALE: 1/4" = 1'-0"



4 UNIT A4 - FAIR HOUSING
A1.7 SCALE: 1/4" = 1'-0"

JOB PROGRESS:

ITEM: DATE:

REVISIONS:

TAG: DATE:

This drawing, as an instrument of service, is and shall remain the property of the Architect or Record and shall not be published, reproduced or used in any way without the written permission of the Architect of Record. DO NOT scale this drawing. All questions to be submitted as a formal request for information to the Architect of Record.

ALEXANDRIA
AN APARTMENT COMMUNITY
FOR
Bobo Family Group
HUNTSVILLE, ALABAMA

JOB NUMBER:

DRAWN BY:

CHECKED BY:

FAIR HOUSING UNITS

SHEET NO.

A1.7

Order Please

WWW.LDREVIEWS.COM