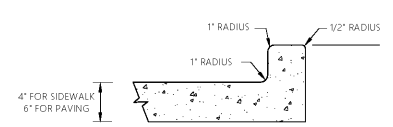
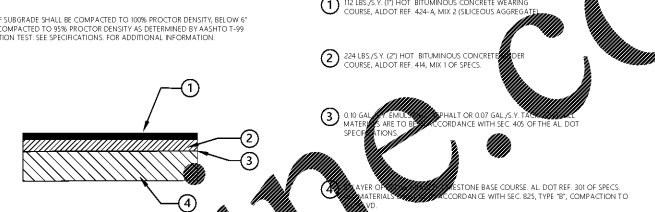


Concrete Curb & Gutter
NOT TO SCALE



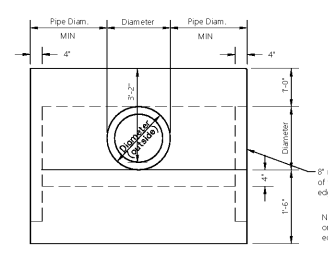
Concrete Integral Curb
NOT TO SCALE



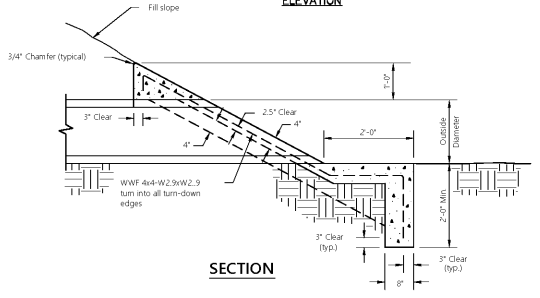
Asphalt Paving Section
NOT TO SCALE

- 1 - 8" - 30" SOLID COVERS SHALL BE DUCTILE IRON PER ASTM A536 GRADE 70-50-05.
- 2 - 12" - 30" FRAMES SHALL BE DUCTILE IRON PER ASTM A536 GRADE 70-50-05.
- 3 - 8" & 10" SOLID COVERS FIT DIRECTLY ONTO DRAIN BASINS WITH THE USE OF A PVC BODY TOP. SEE DRAWING NO. 7001-110-045.
- 4 - DRAIN BASIN TO BE CUSTOM MANUFACTURED ACCORDING TO PLAN DETAILS. RISERS ARE NEEDED FOR BASINS OVER 84" DUE TO SHIPPING RESTRICTIONS. SEE DRAWING NO. 7001-110-065.
- 5 - DRAINAGE CONNECTION STUB JOINT TIGHTNESS SHALL CONFORM TO ASTM D3212 FOR CORRUGATED HDPE (ADS N-12/HANCOR DUAL WALL) N-12 HP, & PVC SEWER (4" - 24").
- 6 - ADAPTERS CAN BE MOUNTED ON ANY ANGLE 0° TO 360°, TO DETERMINE MINIMUM ANGLE BETWEEN ADAPTERS SEE DRAWING NO. 7001-110-012.
- 7 - 12" - 30" SOLID COVERS SHALL MEET IN-20 LOAD RATINGS.
- 8 - 8" & 10" SOLID COVERS ARE RATED FOR LIGHT DUTY APPLICATIONS ONLY; NO CONCRETE COLLAR NEEDED FOR LIGHT DUTY RATINGS.

Nyloplast Junction-Box
NOT TO SCALE

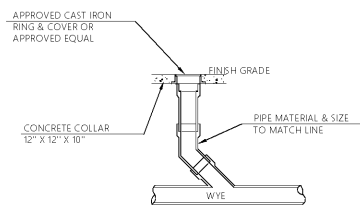


ELEVATION



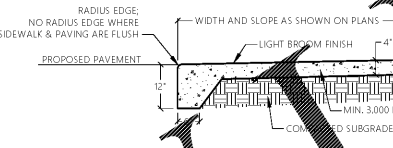
SECTION

Concrete Sloped Paved Headwall
NOT TO SCALE

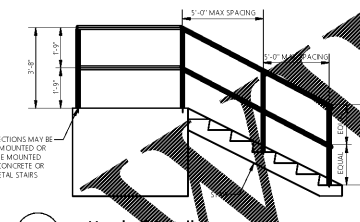


Clean-out
NOT TO SCALE

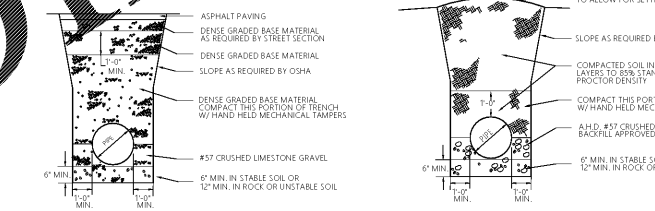
*NOTE: INSTALL TOOLED CONTROLLED JOINTS AT 5' O.C. WITH 1/2" FULL DEPTH ASPHALT IMPREGATED EXPANSION JOINTS AS SHOWN



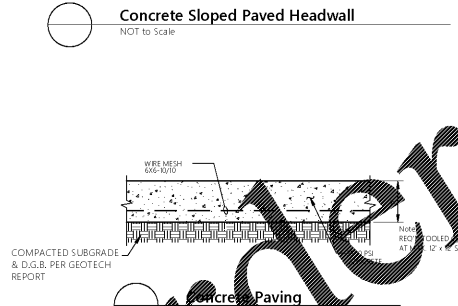
Sidewalk w/ Turn-down Edge and Integral Curb
NOT TO SCALE



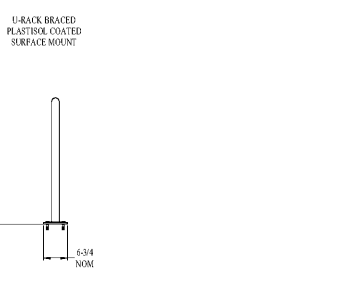
Handrail
NOT TO SCALE



Storm Pipe Bedding
NOT TO SCALE

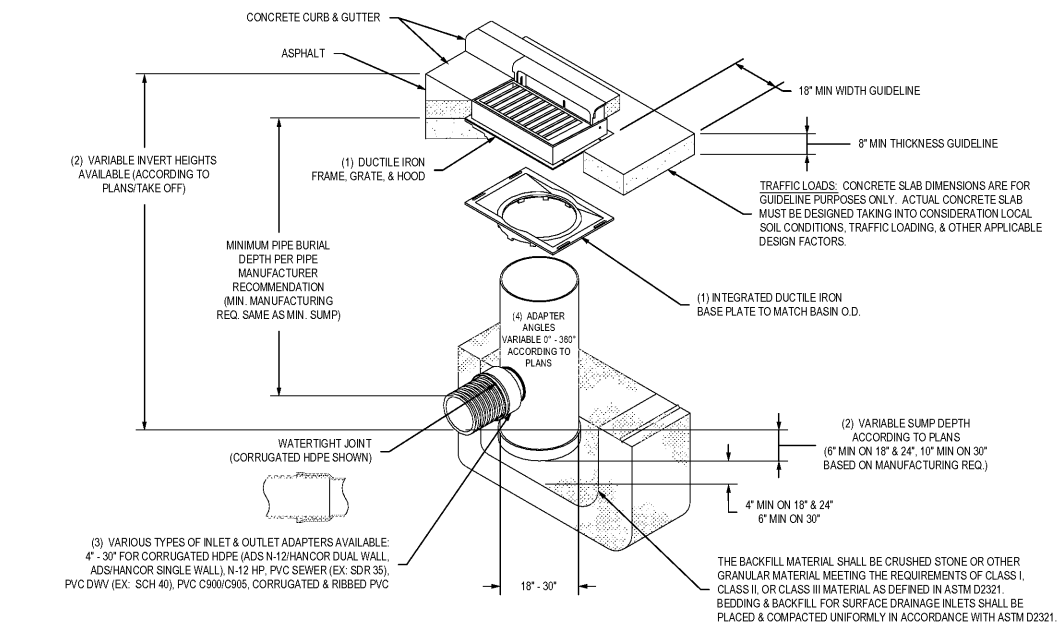


Concrete Paving
NOT TO SCALE



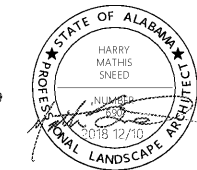
Arcat U-Rack "Braced" 2-Bike Rack Module
NOT TO SCALE

NYLOPLAST 2 FT X 3FT CURB INLET STRUCTURE: 30 __ AGR __ X



- 1 - 18" - 30" FRAMES, GRATES, HOODS, & BASE PLATES SHALL BE DUCTILE IRON PER ASTM A536 GRADE 70-50-05.
- 2 - DRAIN BASIN TO BE CUSTOM MANUFACTURED ACCORDING TO PLAN DETAILS.
- 3 - DRAINAGE CONNECTION STUB JOINT TIGHTNESS SHALL CONFORM TO ASTM D3212 FOR CORRUGATED HDPE (ADS N-12/HANCOR DUAL WALL), N-12 HP, & PVC SEWER (4" - 24").
- 4 - ADAPTERS CAN BE MOUNTED ON ANY ANGLE 0° TO 360°, TO DETERMINE MINIMUM ANGLE BETWEEN ADAPTERS SEE DRAWING NO. 7001-110-012.
- 5 - ALL CURB INLET GRATE OPTIONS (DIAGONAL & HIGH FLOW) SHALL MEET IN-20 LOAD RATINGS

Drain Basin w/ 2' x 3' Curb Inlet
NOT TO SCALE



REV	DATE	DESCRIPTION
1	2018/12/10	ISSUE FOR PERMIT
2	2018/12/10	ISSUE FOR PERMIT
3	2018/12/10	ISSUE FOR PERMIT
4	2018/12/10	ISSUE FOR PERMIT

All documents, including Drawings and Bid Specifications, prepared or furnished by Firms listed on face, are instruments of service in respect of the client and the interest therein whether or not the Project is completed. Such documents are not intended to represent to be suitable for reuse by the Client or others on extensions of the Project or on any other project. Any reuse without written verification by Firms listed on face will entitle Firms listed on face to further compensation at the Client's expense.

MULLINS, LLC
CIVIL ENGINEERING, DEVELOPMENT DESIGN
SURVEYING, LANDSCAPE ARCHITECTURE
2101 West Clinton Avenue, Suite 503, Huntsville, AL 35895
(256) 690-5312

Balch Road Apartments
Huntsville, AL

PREPARED FOR: Bobo Family Group

Civil Details

Job No: 18-166
Date: 2018 12/10
Drawn By: JLH
Checked By: HMS

SHEET NUMBER
C7.1

Order Plans @