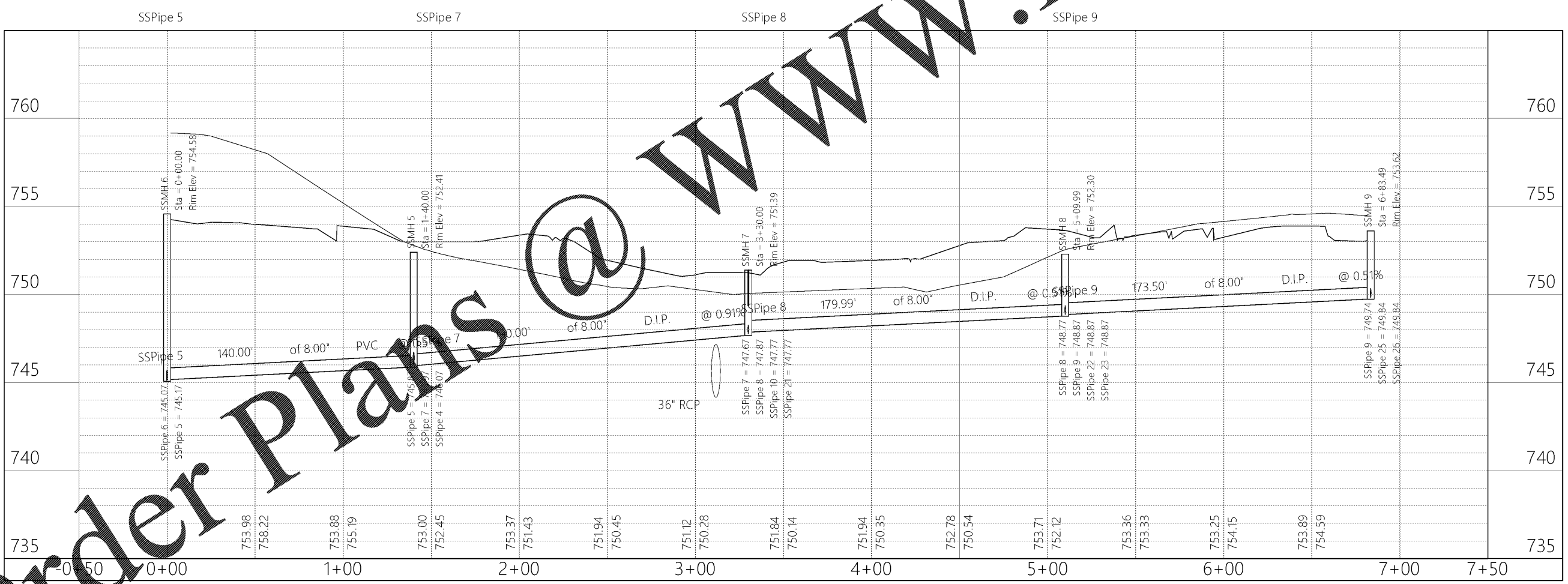


REV	NO.	DESCRIPTION	DATE

MULLINS, LLC
 CIVIL ENGINEERING, DEVELOPMENT DESIGN
 SURVEYING, LANDSCAPE ARCHITECTURE
 2101 West Clinton Avenue, Suite 503, Huntsville, AL 35805
 (256) 690-5312

Balch Road Apartments
 Huntsville, AL
 PREPARED FOR: Bobo Family Group

Sanitary Sewer Profiles
 Job No. 18-166
 Date 2018 12/10
 Drawn By: JLH
 Checked By: HMS
 SHEET NUMBER
C4.2
 2018 12/10



Scale:
 Horizontal 1" = 30'
 Vertical 1" = 3'



Order Plans @ WWW.LDILine.com

All documents, including Drawings and Bid Specifications prepared or furnished by Firms listed on face are instruments of service in respect of the client and the listed on face, shall retain an ownership and property interest in them and shall not be loaned, copied, reproduced, altered, or otherwise used in any way without the written consent of the firm(s) listed on face. Such documents are not intended to be suitable for reuse by the Client or others on extensions of the Project or on any other project. Any reuse without the written verification by Firms listed on face will entitle Firms listed on face to further compensation at rates to be agreed upon by Firms listed on face and the Client.