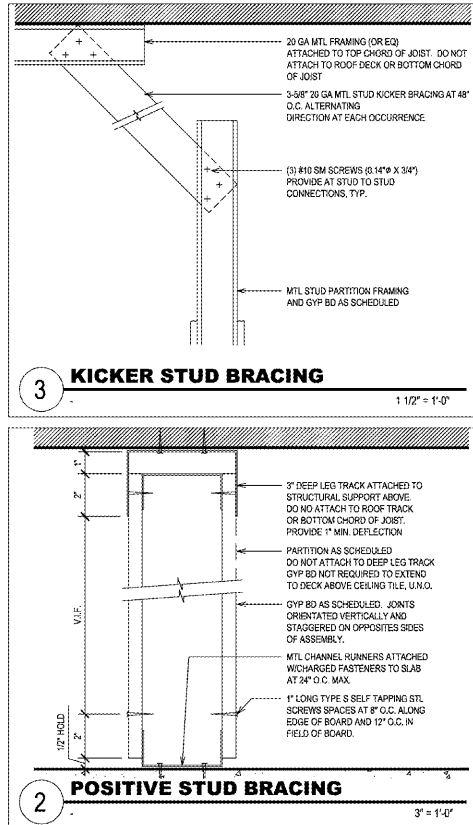


WALL TYPES & PARTITIONS SCHEDULE

WALL TYPE NOTES

- FIELD VERIFY STUD SIZE SHOWN. REFER TO STUD SIZING GUIDELINES FOR GAUGE REQUIREMENTS.
- PROVIDE POSITIVE STUD BRACING @ FULL HEIGHT PARTITIONS.
- PROVIDE KICKER BRACING @ NON-FULL HEIGHT PARTITIONS.
- TAPE AND SAND ALL GYP BD PARTITIONS TO ACCEPT NEW FINISH.

TAG	WALL CONSTRUCTION	TAG	WALL CONSTRUCTION
1	<p>INTERIOR PARTITION - TYPICAL</p> <p>5/8" GYP BD EA SIDE TO 7" ABV CLNG</p> <p>3/8" MTL STUD @ 16" O.C. TO 6" ABOVE CLNG</p> <p>PROVIDE 5/8" 3/4" GRADE PLYWOOD IN LIEU OF GYP BD IN COMMUNICATIONS ROOM</p>	3	<p>CMU - EXTERIOR FACING @ UNCONDITIONED SPACES</p> <p>8" CMU W/ INSULATED (OR GROUTED) CORES U.N.O.</p>
1A	<p>INTERIOR PARTITION - ACoustICAL</p> <p>5/8" GYP BD EA SIDE TO 7" ABV CEILING / DECK ABV</p> <p>3/8" MTL STUD @ 16" O.C. 18" ABV CLNG / DECK ABV</p> <p>SOUND INSULATION TO 12" ABOVE CEILING</p>	4	<p>CMU - EXTERIOR FACING @ CONDITIONED SPACES</p> <p>5/8" GYP BD TO 7" ABOVE CEILING</p> <p>2 1/2" MTL FURRING @ 16" O.C. TO 6" ABV CLNG</p> <p>1" RIGID INSULATION TO DECK ABOVE (R-9 MIN)</p> <p>8" CMU W/ INSULATED (OR GROUTED) CORES U.N.O.</p>
1B	<p>INTERIOR PARTITION - PLUMBING CHASE</p> <p>5/8" GYP BD TO 7" ABOVE CEILING</p> <p>6" MTL STUD @ 16" O.C. TO DECK ABOVE</p>		
2	<p>INTERIOR PARTITION - SERVICE AREA PERIMETER</p> <p>5/8" GYP BD TO 7" ABV CLNG AND/OR DECK ABV</p> <p>3/8" MTL STUD @ 16" O.C. TO DECK ABV</p> <p>R-13.5 BATT INSUL @ CONDITIONED SEPARATIONS</p> <p>3/4" PRT PLWD TO 8" AFF @ SERVICE AREA ONLY</p> <p>5/8" GYP BD ABOVE PLWD TO DECK ABOVE</p>		
2B	<p>INTERIOR PARTITION - SERVICE/STORAGE</p> <p>5/8" GYP BD TO 7" ABV CLNG AND/OR DECK ABV</p> <p>6" MTL STUD @ 16" O.C. TO DECK ABV</p> <p>3/4" PRT PLWD TO 8" AFF @ SERVICE AREA ONLY</p> <p>5/8" GYP BD ABOVE PLWD TO DECK ABOVE</p> <p>PROVIDE SLIP TRACK AT DECK. SEE DTLS SHT A-1</p> <p>EXTEND GYP BD TO DECK ABOVE AT OPEN SLAB</p>		



FLOOR PLAN NOTES

- REFER TO SHEET T1 FOR GENERAL NOTES.
- ALL MATERIALS AND PRODUCTS SPECIFIED SHALL BE NEW AND IN ACCORDANCE WITH MANUFACTURERS SPECIFICATIONS. ANY DEVIATION FROM THE INTENT OF THE DOCUMENTS WITHOUT APPROVAL IS AT THE GC AND SUBCONTRACTORS OWN RISK.
- FINISH FLOOR ELEVATION = 100'-0\"/>

STUD SIZING GUIDE

BASED ON INTERIOR NON-BEARING PARTITIONS WITH ONE LAYER OF 5/8\"/>

SIZE	GA	TYPE	16\"/>
(MAXIMUM SUPPORT HEIGHT ALLOWED)			
2 1/2"	22	ST	13'-0"
	20	ST	13'-10"
3 5/8"	22	ST	17'-3"
	20	ST	17'-11"
	20	SJ	18'-6"
	18	SJ	19'-3"
	16	SJ	20'-0"
	14	SJ	22'-0"
6"	22	ST	25'-3"
	20	ST	26'-1"
	20	SJ	26'-8"
	18	SJ	28'-0"

CONSULTANT:

ROBERT D. NITISHIN, AIA
ARCHITECT

2265 ROSWELL ROAD
SUITE 100
MARIETTA, GEORGIA 30062
770-509-4894 TELEPHONE
770-509-2207 FACSIMILE

CLIENT:

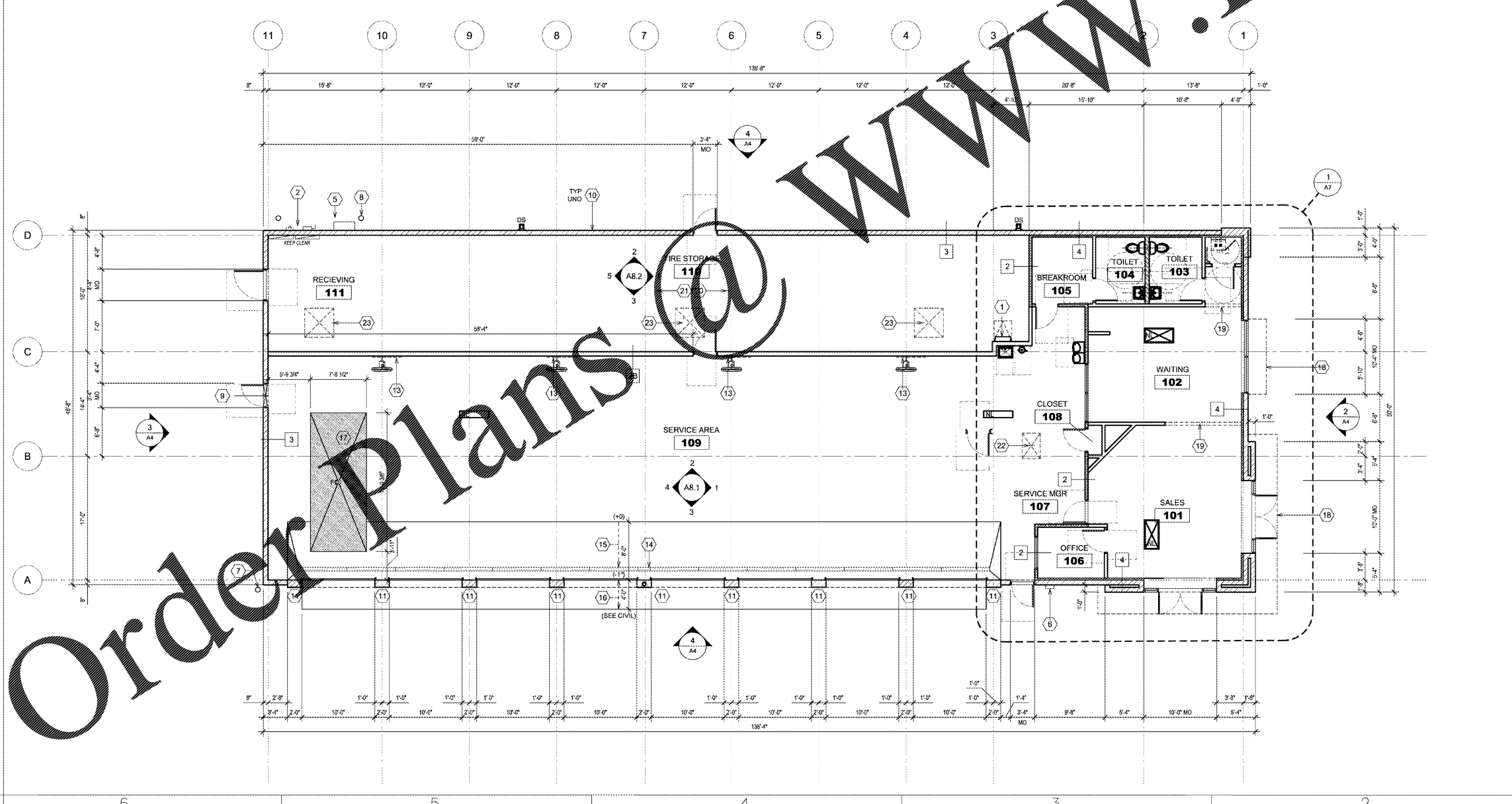
TBC CORPORATION

430 TBC WAY
PALM BEACH GARDENS
FLORIDA 33410

PROJECT INFORMATION:

NFB
TYPE & SERVICE CENTERS

GREER, SOUTH CAROLINA



KEYED NOTES

- STL LADDER TO ROOF ACCESS ABOVE. PROVIDE BLOCKING IN PARTITION AS REQUIRED. SEE WALL DETAIL FOR LADDER DETAIL.
- APPROX ELECTRIC METER LOCATION, SEE ELEC.
- NOT USED
- NOT USED
- APPROX GAS METER LOCATION
- PREFERRED FIRE DEPARTMENT KNOX BOX LOCATION. COORDINATE FINAL LOCATION WITH AHJ.
- PROVIDE (2) STL PIPE BOLLARD PROTECTION WHERE BUILDING CORNER IS ADJACENT TO AND FLUSH WITH DRIVE ASBLE.
- PROVIDE (2) STL PIPE BOLLARD(S) PROTECTION AT ALL UTILITY METERS.
- EXHAUST FAN IN WALL. SEE MECH.
- 8" CMU TYP U.N.O., SEE STRUCTURAL.
- 12" CMU REQUIRED AT OH DOORS. SEE STRUCTURAL.
- NOT USED
- PROVIDE BLOCKING AT 10'-0" AFF FOR FANS IN SERVICE AREA.
- TRENCH DRAIN AND CATCH BASIN. SEE PLUMBING.
- PROVIDE SLOPED SLAB TO PROVIDE POSITIVE DRAINAGE TOWARD FLOOR DRAIN (1/8" PER FT MIN)
- PROVIDE 4'-0" MIN CONC APRON @ OH DOORS. TYP. SLOPE AWAY FROM BUILDING TO ENSURE POSITIVE DRAINAGE.
- LIFT FIT W/ FLOOR DRAIN. SEE STRUCTURAL AND PLUMBING.
- DASHED LINE INDICATES CANOPY OR AWNING ABOVE. PROTECT FROM DRIVE ASBLE TRAFFIC DURING CONSTRUCTION.
- BULKHEAD ABOVE. SEE CEILING PLAN.
- PER NFPA 1. PROVIDE LIGHT FRAME TRUSS TYPE ROOF SYSTEM WARNING PLACARD. COORDINATE PLACEMENT WITH FIRE MARSHAL.
- PROVIDE FIRE/SMOKE DETECTION SYSTEM IN FIRE STORAGE AREA. COORDINATE W/ MECH & ELEC.
- AIR INTAKE HOOD ABOVE. SEE MECH. SEE ALSO STRUCTURAL.
- HEAT AND SMOKE VENT ABOVE. SEE MECH. SEE ALSO STRUCT.

SEAL:

PROJECT NO. 20180011

DRAWN BY:

CHECKED BY:

ISSUE: DATE:

ISSUED FOR PERMIT: 10/10/2018

REVISION: DATE:

1 ARCH FLOOR PLAN

1/8" = 1'-0"



A1