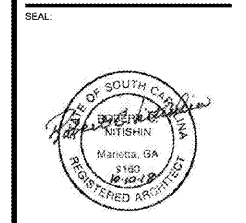


CONSULTANT:  
**ROBERT C. NITISHIN, AIA**  
 ARCHITECT  
 2265 ROSWELL ROAD  
 SUITE 100  
 MARIETTA, GEORGIA 30062  
 770-509-4894 TELEPHONE  
 770-509-2207 FACSIMILE

CLIENT:  
**TBC CORPORATION**  
 430 TBC WAY  
 PALM BEACH GARDENS  
 FLORIDA 33410

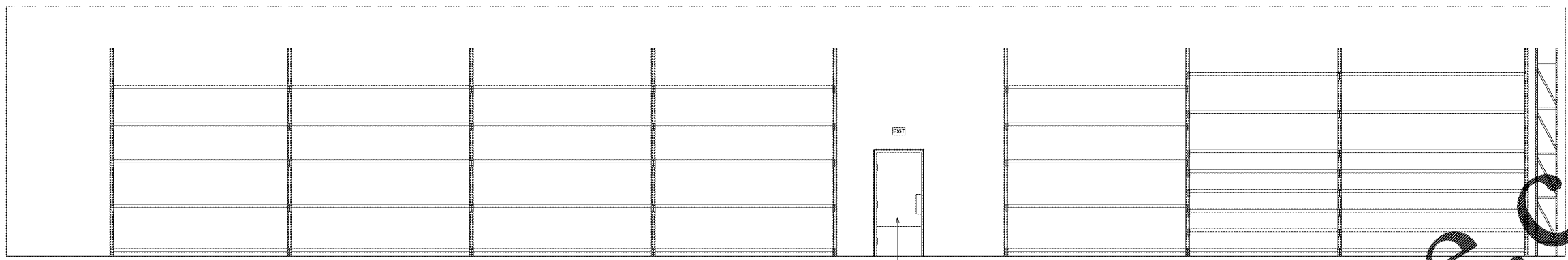
PROJECT INFORMATION:  
**WFB**  
 TIRE & SERVICE CENTERS  
 GREER, SOUTH CAROLINA



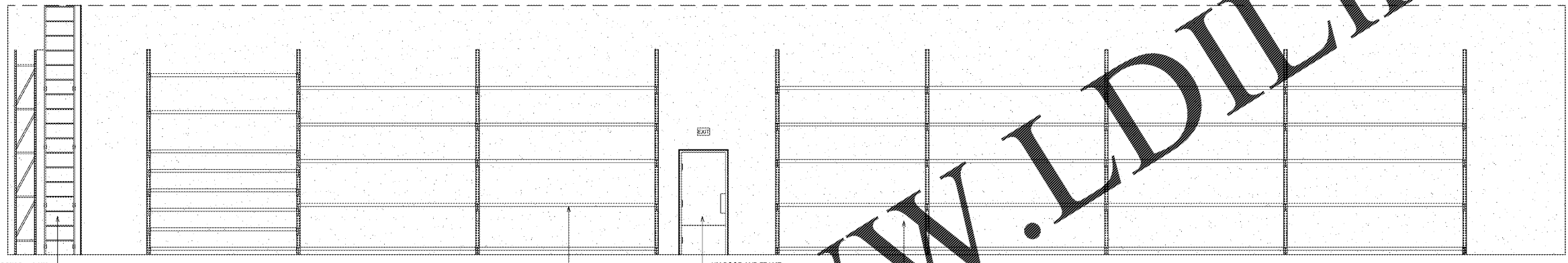
PROJECT NO.: 20180011  
 DRAWN BY: \_\_\_\_\_  
 CHECKED BY: \_\_\_\_\_  
 ISSUE DATE: \_\_\_\_\_  
 ISSUED FOR PERMIT: 10/10/2018

REVISION: \_\_\_\_\_ DATE: \_\_\_\_\_

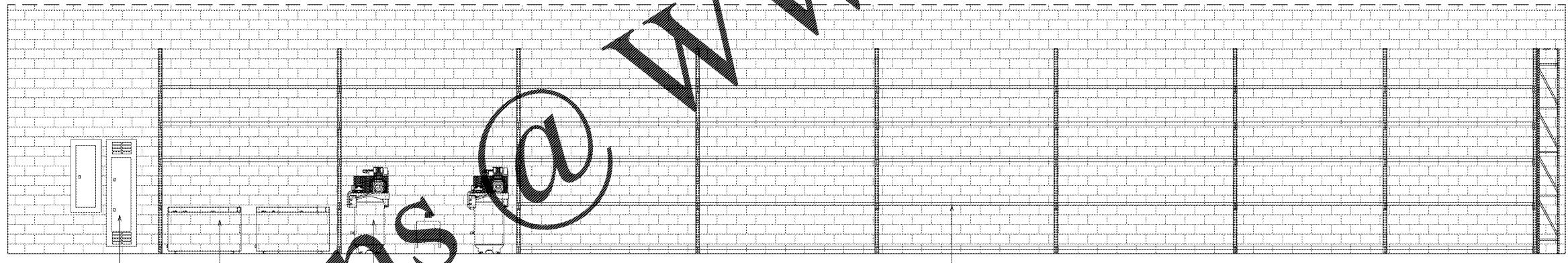
SHEET TITLE:  
**INTERIOR ELEVATIONS**  
 SHEET NUMBER:  
**A8.2**



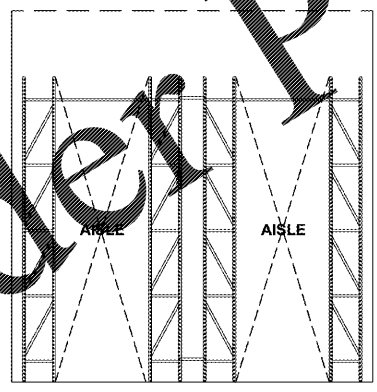
**1 TIRE STORAGE - NORTH**  
 LONGITUDINAL  
 1/4" = 1'-0"



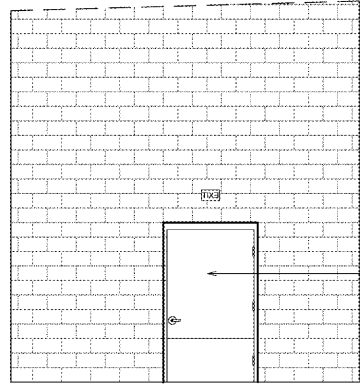
**2 TIRE STORAGE - SOUTH**  
 SEE ROOM FINISH SCHEDULE FOR FINISHES  
 1/4" = 1'-0"



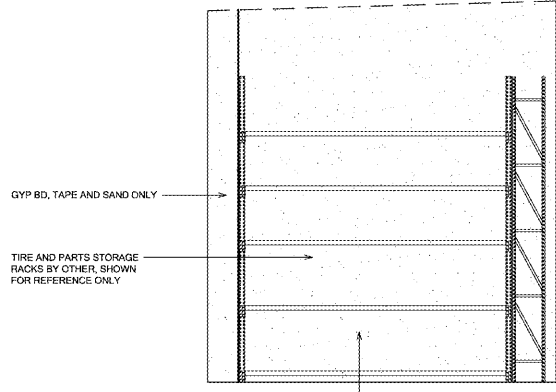
**3 TIRE STORAGE - WEST**  
 SEE ROOM FINISH SCHEDULE FOR FINISHES  
 1/4" = 1'-0"



**4 TIRE STORAGE - CROSS SECTION**  
 LATITUDINAL  
 1/4" = 1'-0"



**5 TIRE STORAGE - EAST**  
 SEE ROOM FINISH SCHEDULE FOR FINISHES  
 1/4" = 1'-0"



**6 TIRE STORAGE - WEST**  
 SEE ROOM FINISH SCHEDULE FOR FINISHES  
 1/4" = 1'-0"

Order Plans @ [www.LDILine.com](http://www.LDILine.com)

© COPYRIGHT MICHAEL J. WARD ARCHITECT