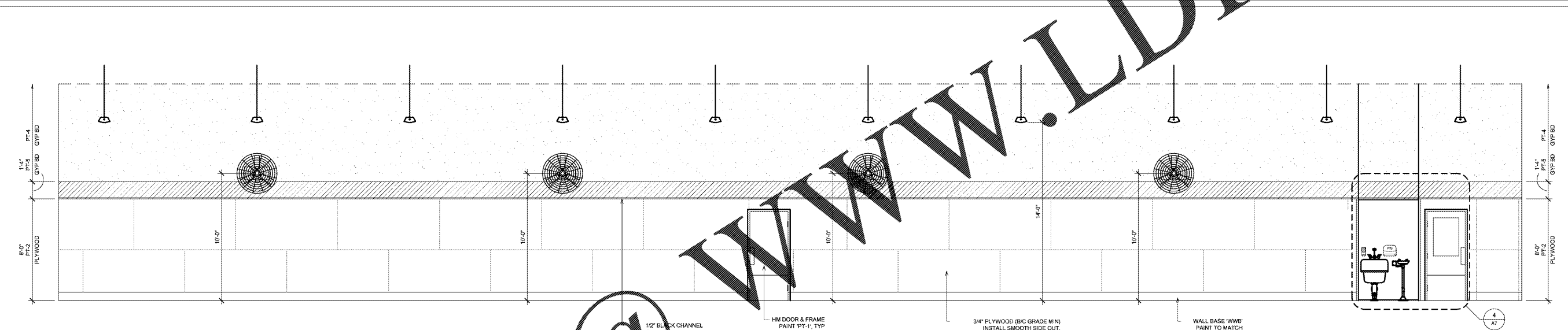
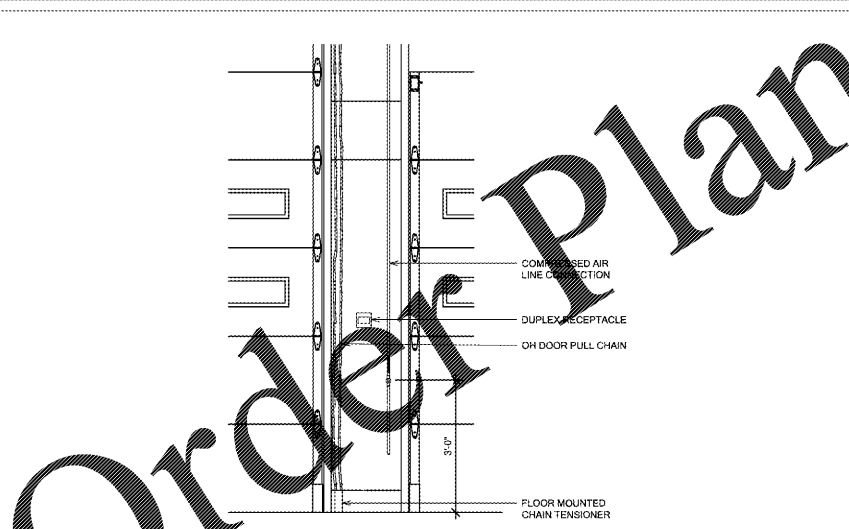


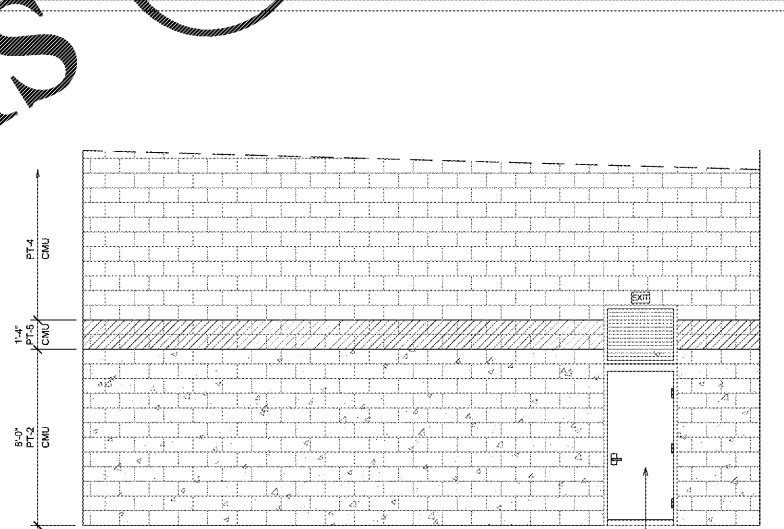
**3 SERVICE GARAGE - SOUTH**  
SEE ROOM FINISH SCHEDULE FOR FINISHES 1/4" = 1'-0"



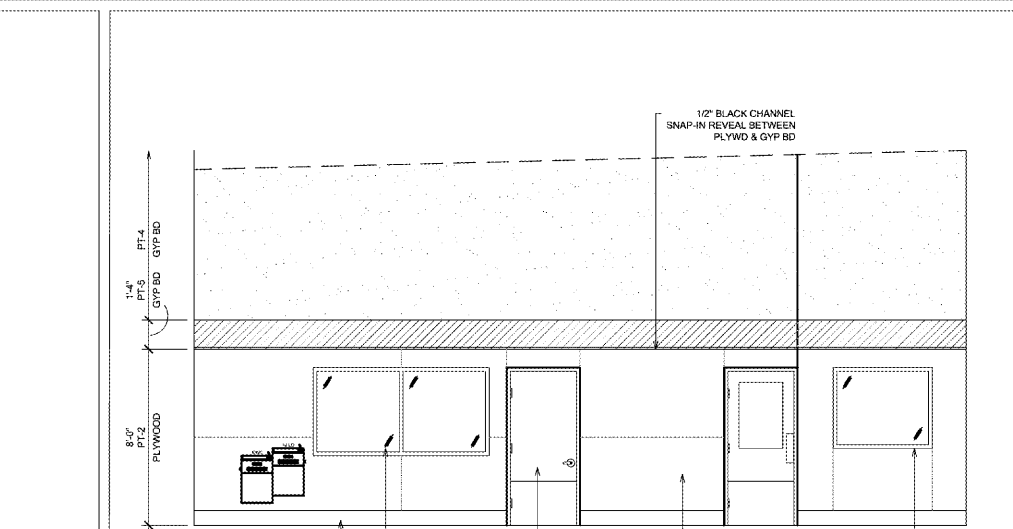
**2 SERVICE GARAGE - NORTH**  
SEE ROOM FINISH SCHEDULE FOR FINISHES 1/4" = 1'-0"



**5 OH DOOR PILASTER DETAIL**  
SEE ALSO ELECTRICAL / MECHANICAL 1/4" = 1'-0"



**4 SERVICE GARAGE - WEST**  
SEE ROOM FINISH SCHEDULE FOR FINISHES 1/4" = 1'-0"



**1 SERVICE GARAGE - EAST**  
SEE ROOM FINISH SCHEDULE FOR FINISHES 1/4" = 1'-0"

CONSULTANT:  
**ROBERT C. NITSHIN, AIA**  
ARCHITECT  
2265 ROSWELL ROAD  
SUITE 100  
MARIETTA, GEORGIA 30062  
770-509-4894 TELEPHONE  
770-509-2207 FACSIMILE

CLIENT:  
**TBC CORPORATION**  
430 TBC WAY  
PALM BEACH GARDENS  
FLORIDA 33410

PROJECT INFORMATION:  
**WFB**  
TIPS & SERVICE CENTERS  
GREER, SOUTH CAROLINA

SEAL:  
STATE OF SOUTH CAROLINA  
ROBERT C. NITSHIN  
MARIETTA, GA  
REGISTERED ARCHITECT

PROJECT NO.: 20180011  
DRAWN BY:  
CHECKED BY:  
ISSUE: DATE:  
ISSUED FOR PERMIT: 10/10/2018

REVISION: DATE:

SHEET TITLE:  
**INTERIOR ELEVATIONS**  
SHEET NUMBER:  
**A8.1**

Order Plans @

WWW.LDILINE.COM