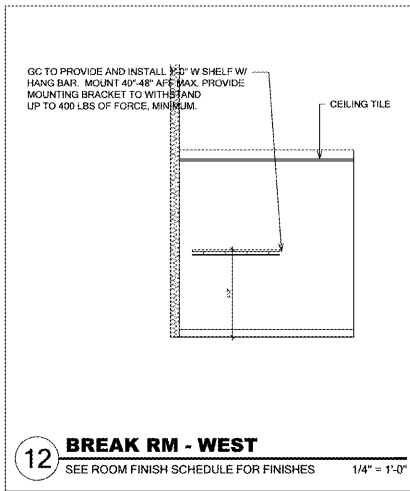
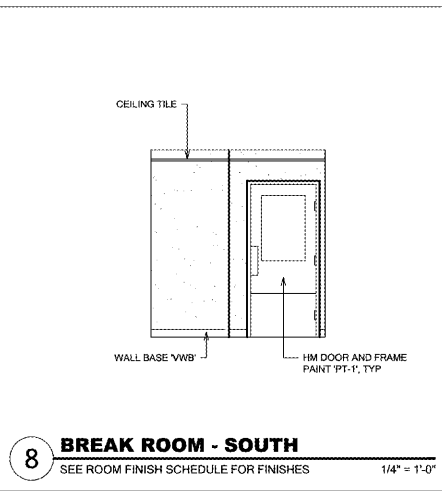


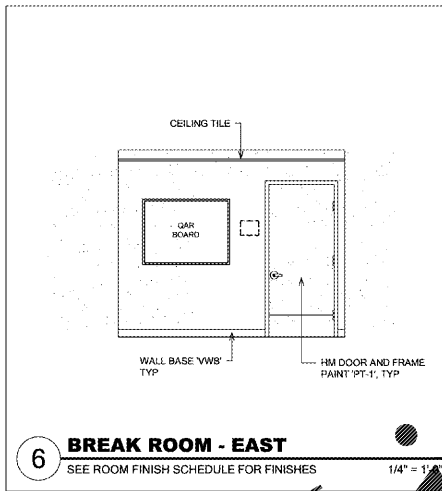
**13 WAITING - NORTH**  
SEE ROOM FINISH SCHEDULE FOR FINISHES 1/4" = 1'-0"



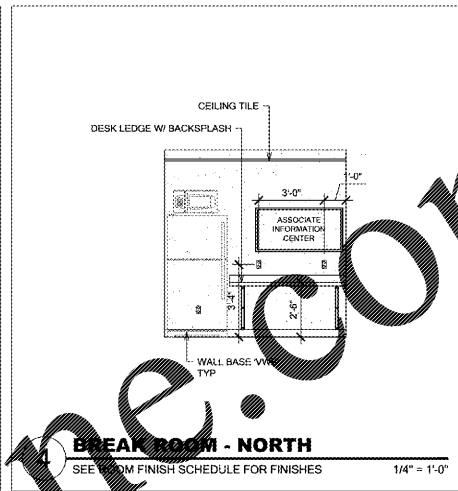
**12 BREAK RM - WEST**  
SEE ROOM FINISH SCHEDULE FOR FINISHES 1/4" = 1'-0"



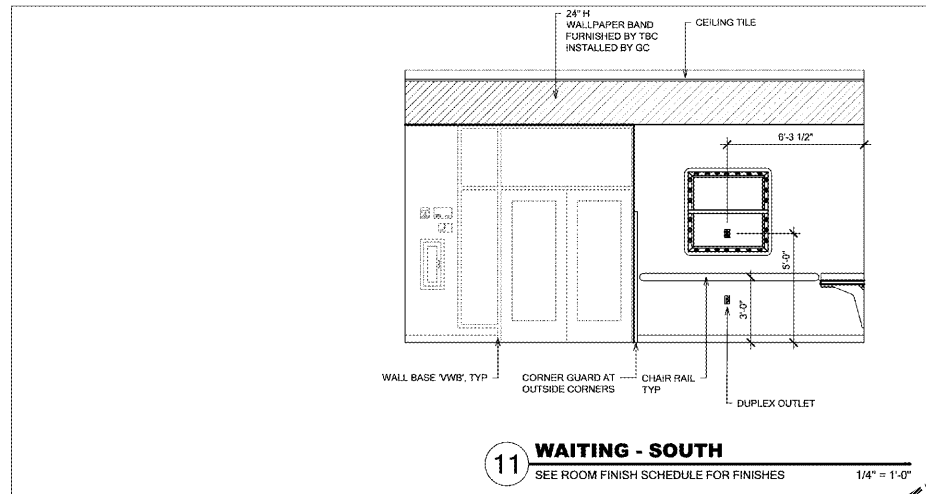
**8 BREAK ROOM - SOUTH**  
SEE ROOM FINISH SCHEDULE FOR FINISHES 1/4" = 1'-0"



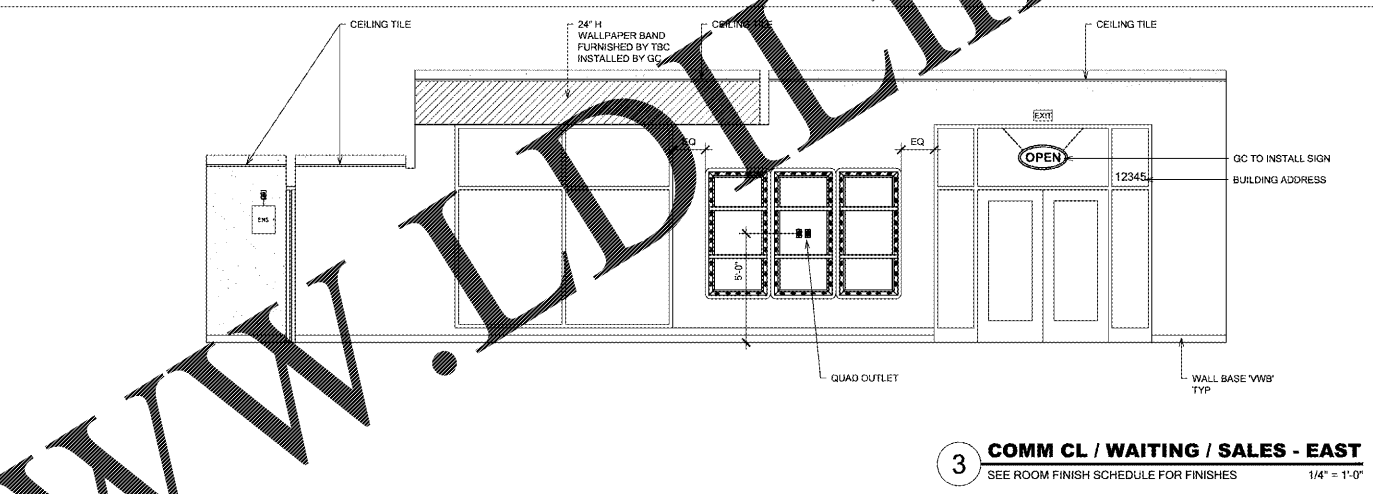
**6 BREAK ROOM - EAST**  
SEE ROOM FINISH SCHEDULE FOR FINISHES 1/4" = 1'-0"



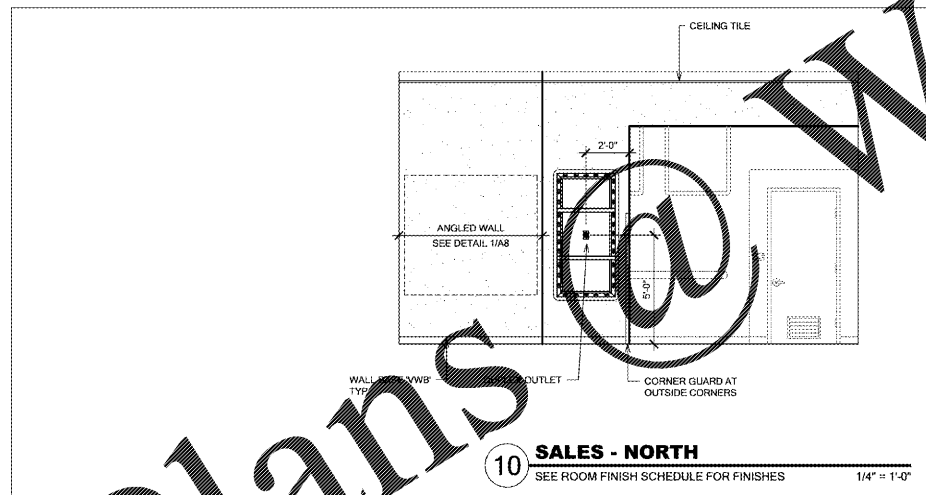
**4 BREAK ROOM - NORTH**  
SEE ROOM FINISH SCHEDULE FOR FINISHES 1/4" = 1'-0"



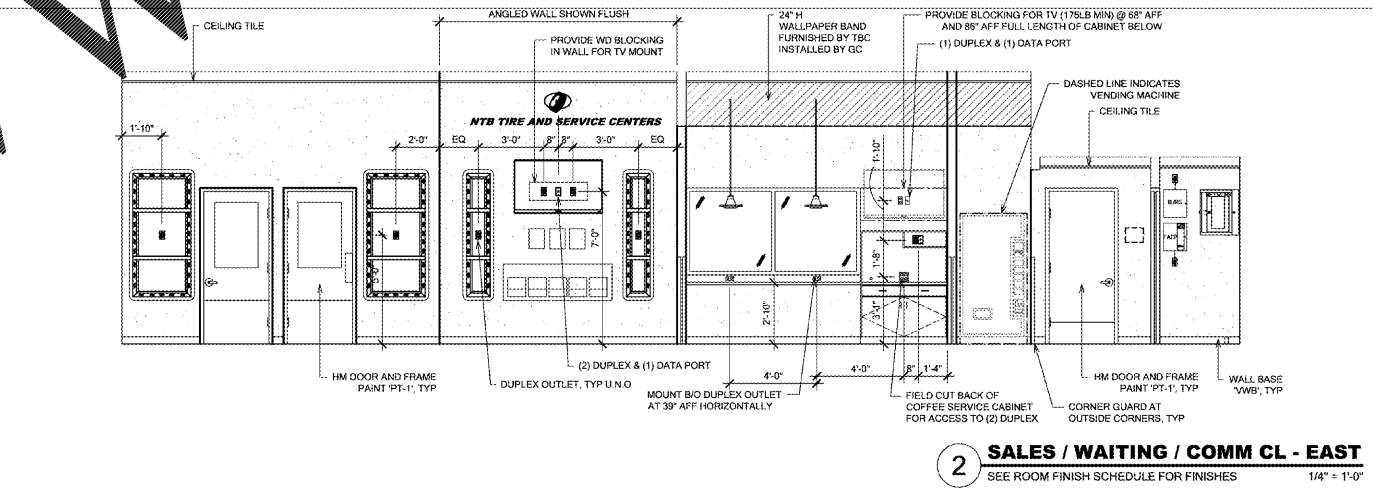
**11 WAITING - SOUTH**  
SEE ROOM FINISH SCHEDULE FOR FINISHES 1/4" = 1'-0"



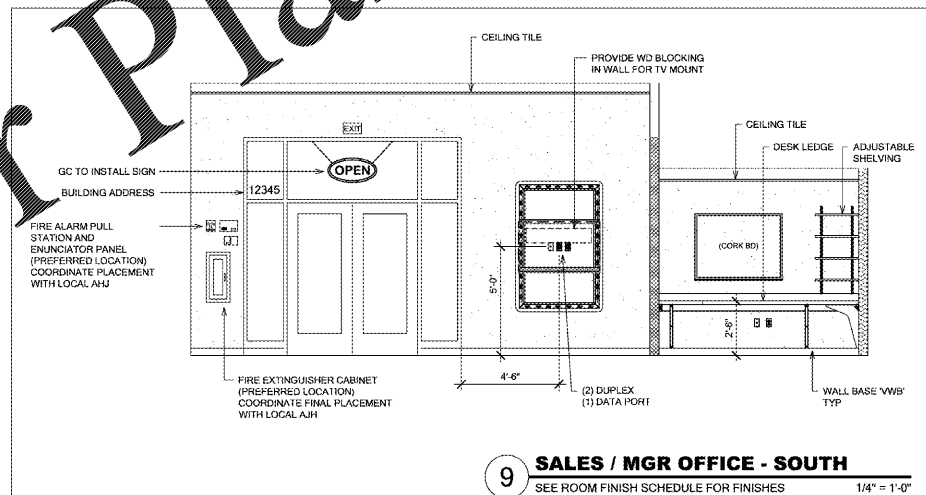
**3 COMM CL / WAITING / SALES - EAST**  
SEE ROOM FINISH SCHEDULE FOR FINISHES 1/4" = 1'-0"



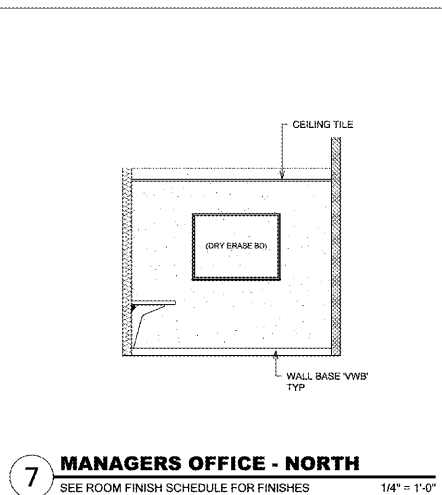
**10 SALES - NORTH**  
SEE ROOM FINISH SCHEDULE FOR FINISHES 1/4" = 1'-0"



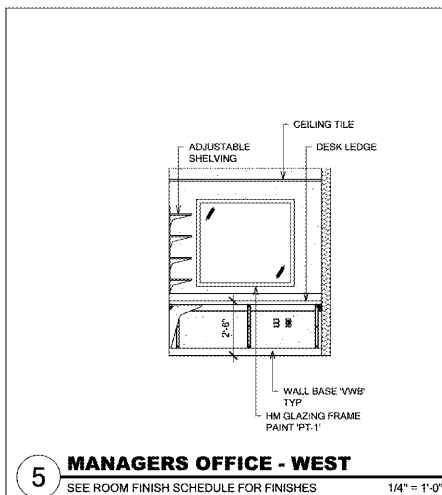
**2 SALES / WAITING / COMM CL - EAST**  
SEE ROOM FINISH SCHEDULE FOR FINISHES 1/4" = 1'-0"



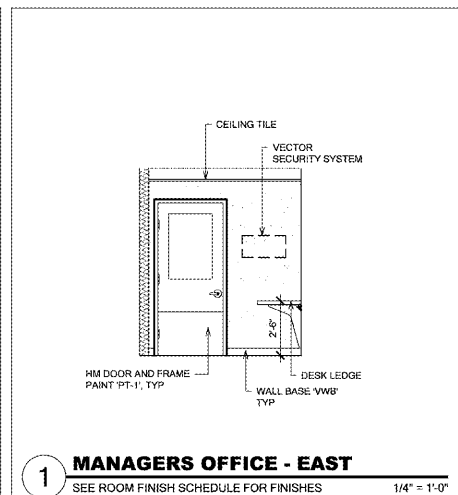
**9 SALES / MGR OFFICE - SOUTH**  
SEE ROOM FINISH SCHEDULE FOR FINISHES 1/4" = 1'-0"



**7 MANAGERS OFFICE - NORTH**  
SEE ROOM FINISH SCHEDULE FOR FINISHES 1/4" = 1'-0"



**5 MANAGERS OFFICE - WEST**  
SEE ROOM FINISH SCHEDULE FOR FINISHES 1/4" = 1'-0"



**1 MANAGERS OFFICE - EAST**  
SEE ROOM FINISH SCHEDULE FOR FINISHES 1/4" = 1'-0"

Order Plans

WWW.LDLINE.COM

CONSULTANT:  
**ROBERT C. NITISHIN, AIA**  
ARCHITECT  
2265 ROSWELL ROAD  
SUITE 100  
MARIETTA, GEORGIA 30062  
770-509-4894 TELEPHONE  
770-509-2207 FACSIMILE

CLIENT:  
**TBC CORPORATION**  
430 TBC WAY  
PALM BEACH GARDENS  
FLORIDA 33410

PROJECT INFORMATION:  
**NTB**  
TIRE & SERVICE CENTERS  
GREER, SOUTH CAROLINA



PROJECT NO.: 20180011  
DRAWN BY: \_\_\_\_\_  
CHECKED BY: \_\_\_\_\_  
ISSUE DATE: \_\_\_\_\_  
ISSUED FOR PERMIT: 10/10/2018

REVISION: \_\_\_\_\_ DATE: \_\_\_\_\_

SHEET TITLE:  
**INTERIOR ELEVATIONS**  
SHEET NUMBER:  
**A8**