

### RESTROOM NOTES

- SEE PLUMBING PLANS FOR PLUMBING FIXTURE SCHEDULES
- SEE SPECIFICATIONS (SHEET SERIES A10) FOR TOILET ACCESSORY REQUIREMENTS AND MANUFACTURER PREFERENCES. PROVIDE AS SHOWN IN PLANS AND ELEVATIONS.
- ALL TOILET ACCESSORIES TO BE FURNISHED AND INSTALLED BY GC.
- ANY LOCAL OR STATE VARIATIONS TO STANDARDS SHOWN SHALL SUPERSEDE THESE REQUIREMENTS.
- PROVIDE FRIT BLOCKING IN WALLS AT ALL ACCESSORIES AND GRAB BARS PER MANUFACTURER RECOMMENDATIONS
- SEE ALSO SHEET LS-1.1 FOR ADDITIONAL ACCESSIBILITY REQUIREMENTS.
- ABBREVIATIONS:
  - ADA ACCESSIBLE FIXTURE
  - BCS BABY CHANGING STATION
  - CH COAT HOOK
  - EWCO ELECTRIC WATER COOLER
  - FD FLOOR DRAIN
  - FRP FIBERGLASS REINFORCED PANEL
  - GB GRAB BAR
  - GWB GYPSUM WALL BOARD
  - LAV ACCESSIBLE LAVATORY W/ LEVER FAUCETS
  - M MIRROR
  - PTD PAPER TOWEL DISPENSER
  - SD SOAP DISPENSER - STANDARD
  - SD2 SOAP DISPENSER - INDUSTRIAL
  - TPD TOILET PAPER DISPENSER
  - WC WATER CLOSET
  - WC VINYL WALL BOARD

CONSULTANT:  
**ROBERT C. NITISHIN, AIA**  
 ARCHITECT  
 2265 ROSWELL ROAD  
 SUITE 100  
 MARIETTA, GEORGIA 30062  
 770-509-4894 TELEPHONE  
 770-509-2207 FACSIMILE

CLIENT:  
**TBC CORPORATION**  
 430 TBC WAY  
 PALM BEACH GARDENS  
 FLORIDA 33410

### TOILET ACCESSORIES

TAG	MANUFACTURER	PRODUCT SPECIFICATION	QTY
BCS	SAFE-STRAP CO (SSC)	DIAPER DEPT OVAL #4304 WHITE	2
CH	BOBRICK (OR EQ)	B-542 (RESTROOMS + MGR OFFICE)	3
GB	BOBRICK (OR EQ)	B-6806.99 X 36" X 36" X 18"	2 SETS
M	BOBRICK (OR EQ)	B-185 2436	2
PTD	SAN JAMAR	LEVER ROLL #1100TBK BLACK PEARL	3
SD	SPARTAN CHEMICAL	LITEN FOAMY 975600 WHITE	2
SD2	DEB STOKO	CLEANSE HEAVY 4000 HVY4LDR	1
TPD	SAN JAMAR	SINGLE 9" JBT R2000TBK BLACK PEARL	2
TSD	BOBRICK (OR EQ)	B-221	2

PROJECT INFORMATION:

**WFB**  
 TIPS & SERVICE CENTERS  
 GREER, SOUTH CAROLINA

SEAL:



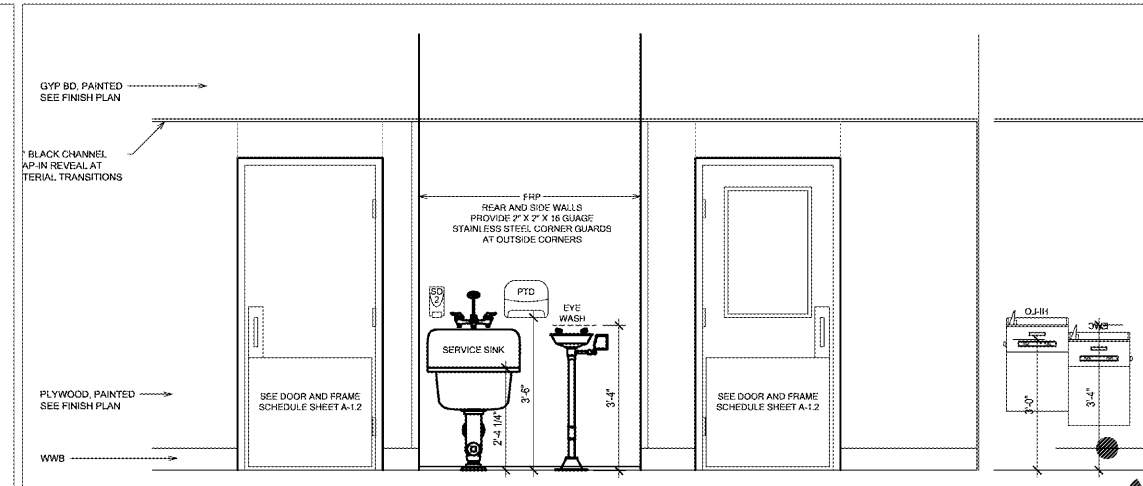
PROJECT NO.: 20180011  
 DRAWN BY:  
 CHECKED BY:

ISSUE: DATE:  
 ISSUED FOR PERMIT: 10/10/2018

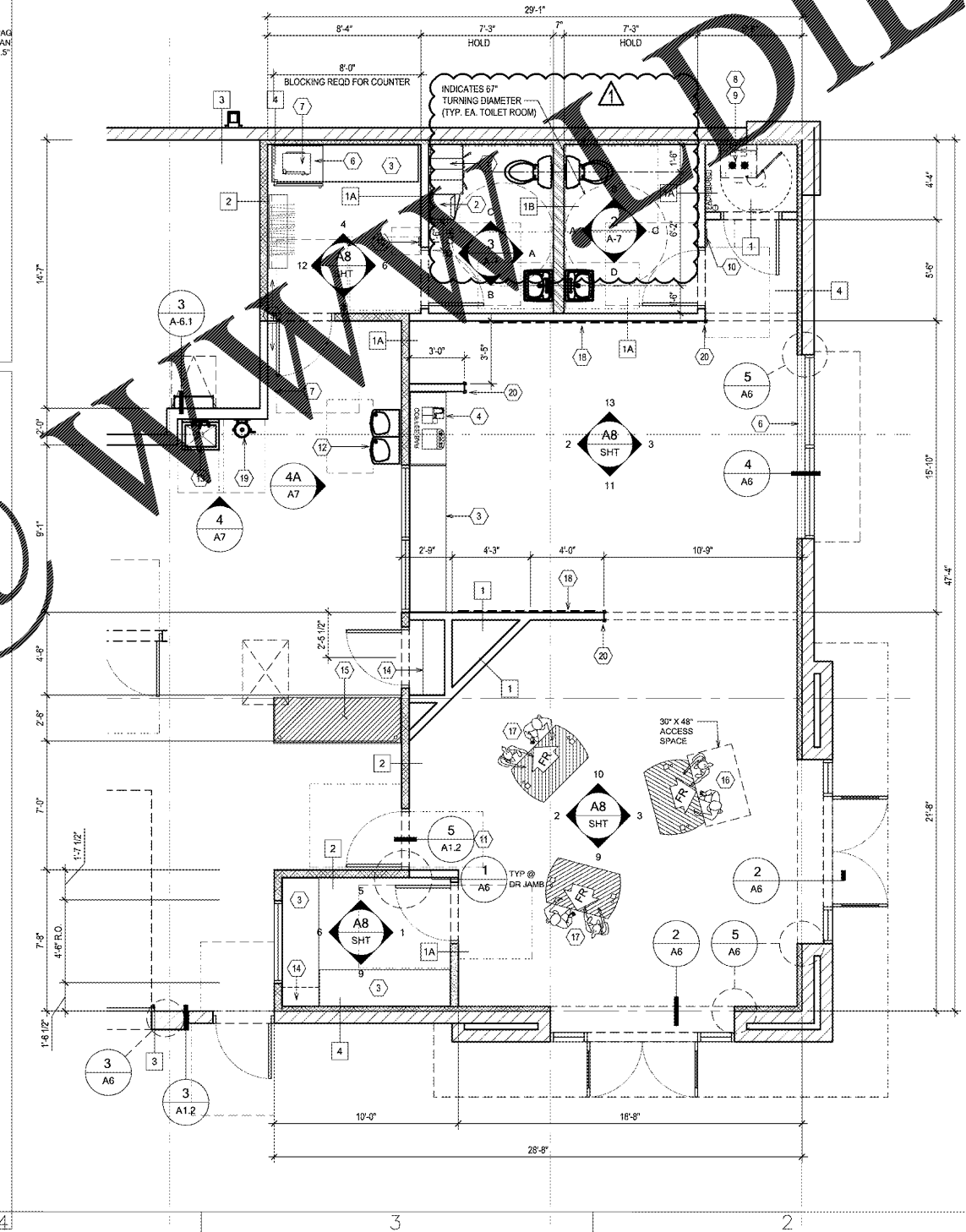
REVISION: DATE:  
 1. PLAN REVIEW COMMENT 11/2/18

SHEET TITLE:  
**ENLARGED PLANS AND ELEVATIONS**

SHEET NUMBER:  
**A7**



**4 4A SERVICE SINK/EYE WASH/DRINKING FOUNTAIN**  
 8-BAY ADA COMPLIANT 1/2" = 1'-0"



### LEGEND

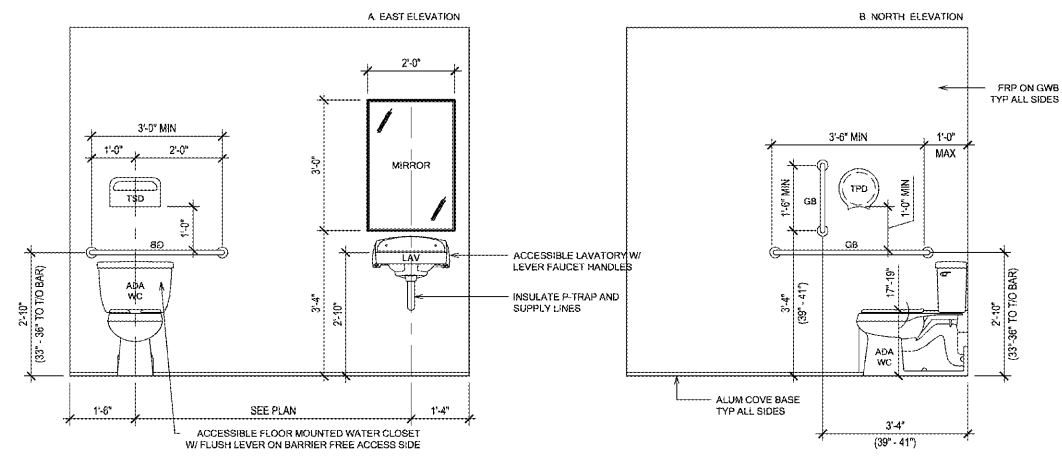
- CONCRETE BLOCK WALL
- INSULATED PARTITION
- PLUMBING CHASE
- ACOUSTICAL PARTITION

### KEYED NOTES

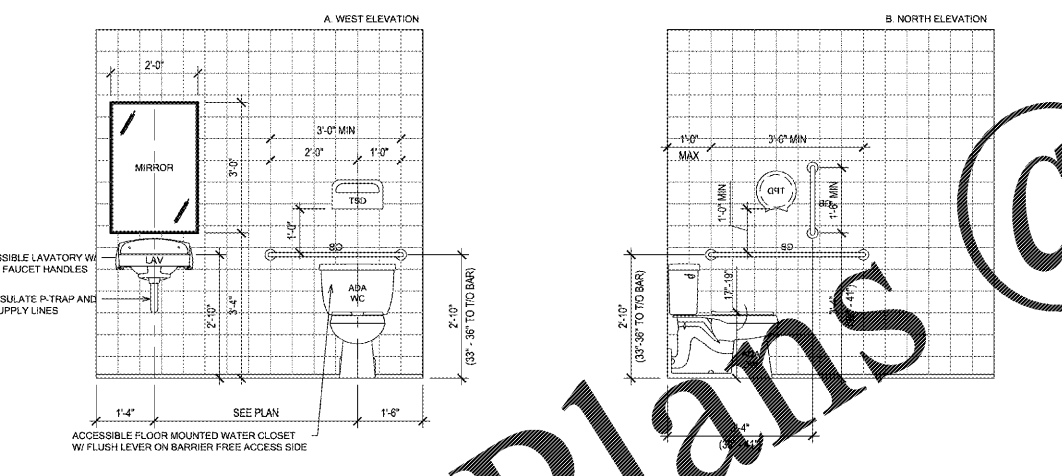
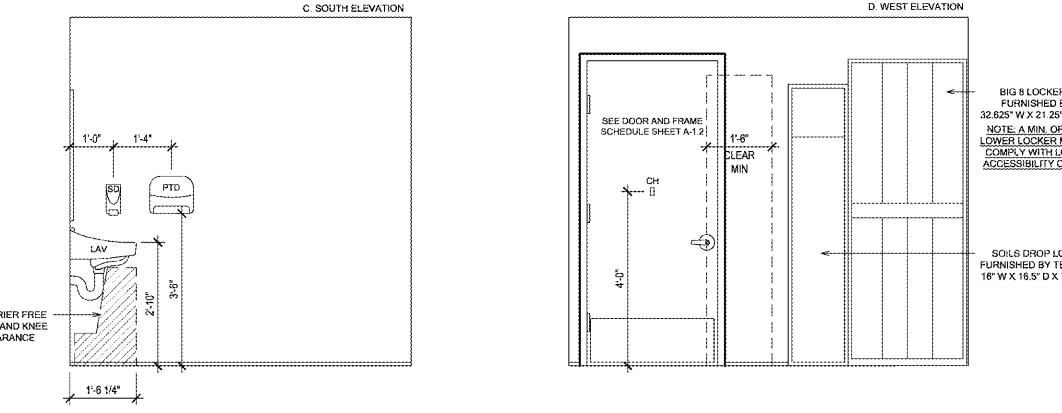
- EMPLOYEE LOCKERS - PERSONAL STORAGE
- EMPLOYEE LOCKERS - SOILS DROP
- COUNTER AND/OR MILLWORK PROVIDE FRIT BLOCKING OR MTL STRAPPING IN WALL TO SUPPORT COUNTER AND/OR CABINETRY.
- COFFEE SERVICE AREA. FURNISHED BY OWNER. GC TO INSTALL. SEE ALSO SHEET A8.1.
- BREAK METAL SILL COVER. SEE SHEET A6 DETAILS.
- REFRIGERATOR LOCATION. BY OWNER.
- MICROWAVE LOCATION. BY OWNER.
- NETWORK EQUIPMENT. BY OWNER.
- PROVIDE SMOOTH FACED 5/8" CDX PLYWOOD IN COMMUNICATIONS CLOSET. INSTALL TO 96" AFF OVER GYP BD PARTITION SHEATHING.
- ACCESSIBLE TACTILE RESTROOM SIGNAGE - "UNISEX" OR "NON-GENDER" AS REQUIRED BY LOCAL A.H.J. INSTALL PER ACCESSIBILITY CODE.
- VOY TO CONCRETE FLOORING TRANSITION. SEE SHEET A1.2 DETAILS.
- H/I/O ACCESSIBLE DRINKING FOUNTAIN; SEE PLUMB; SEE ELEC.
- EMPLOYEE HAND-WASH SERVICE SINK; SEE PLUMB.
- ADJUSTABLE SHELVING ON WALL STANDARDS. PURCHASED AND INSTALLED BY GC PER OWNER DIRECTION. SEE SHEET A9 DETAILS.
- SERVICE MANAGER WORKSTATION - FREESTANDING. SEE ALSO ELEC.
- ACCESSIBLE POS KIOSK. SEE SHEET A9 DETAILS. SEE ALSO ELEC. PROVIDED BY OWNER; INSTALLED BY GC/TRADE.
- STANDARD (NON-COMPLIANT) POS KIOSK. SEE SHEET A9 DETAILS. SEE ALSO ELEC. PROVIDED BY OWNER; INSTALLED BY GC/TRADE.
- CHAIR RAIL. PROVIDED AND INSTALLED BY GC. COORDINATE SPEC W/ TBC CONSTRUCTION MANAGER.
- EYE-WASH SAFETY STATION
- 2" X 2" HEAVY DUTY STAINLESS STL CORNER GUARD TO 6'-0" AFF

### 1 ENLARGED FLOOR PLAN

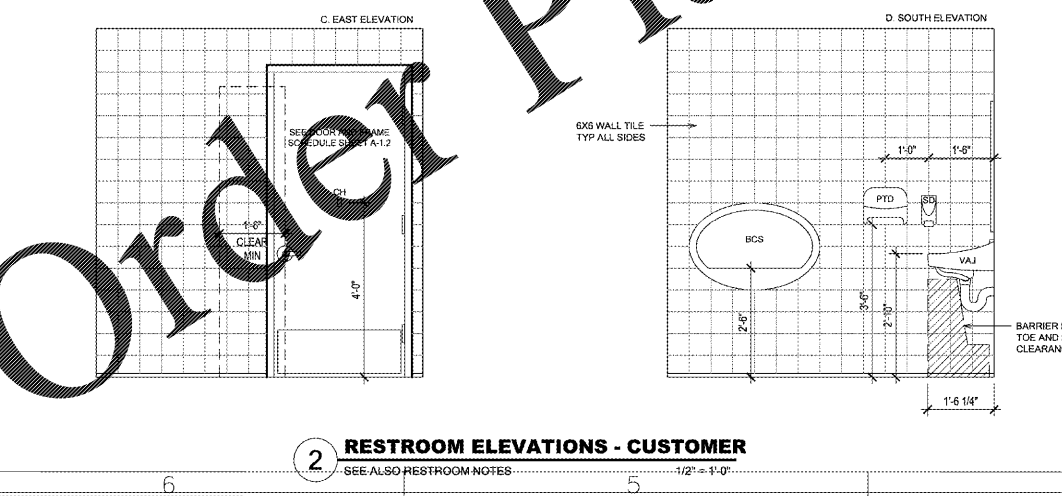
1/4" = 1'-0" NORTH



**3 RESTROOM ELEVATIONS - EMPLOYEE**  
 SEE ALSO RESTROOM NOTES 1/2" = 1'-0"



**2 RESTROOM ELEVATIONS - CUSTOMER**  
 SEE ALSO RESTROOM NOTES 1/2" = 1'-0"



Order Plans @