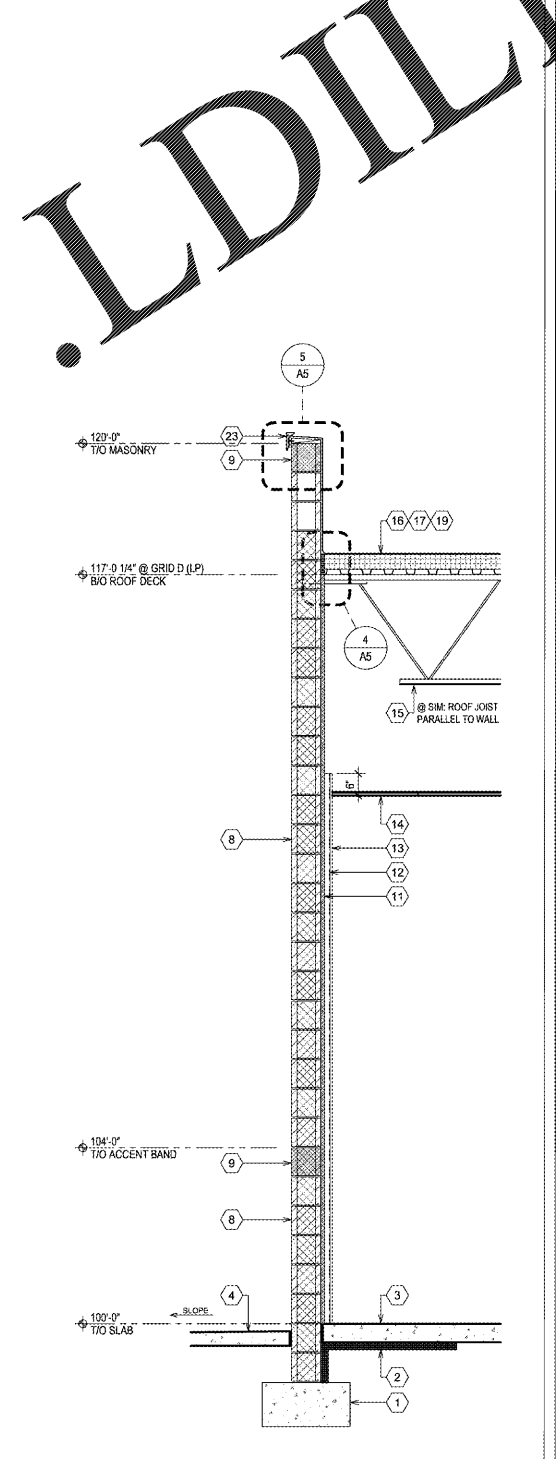
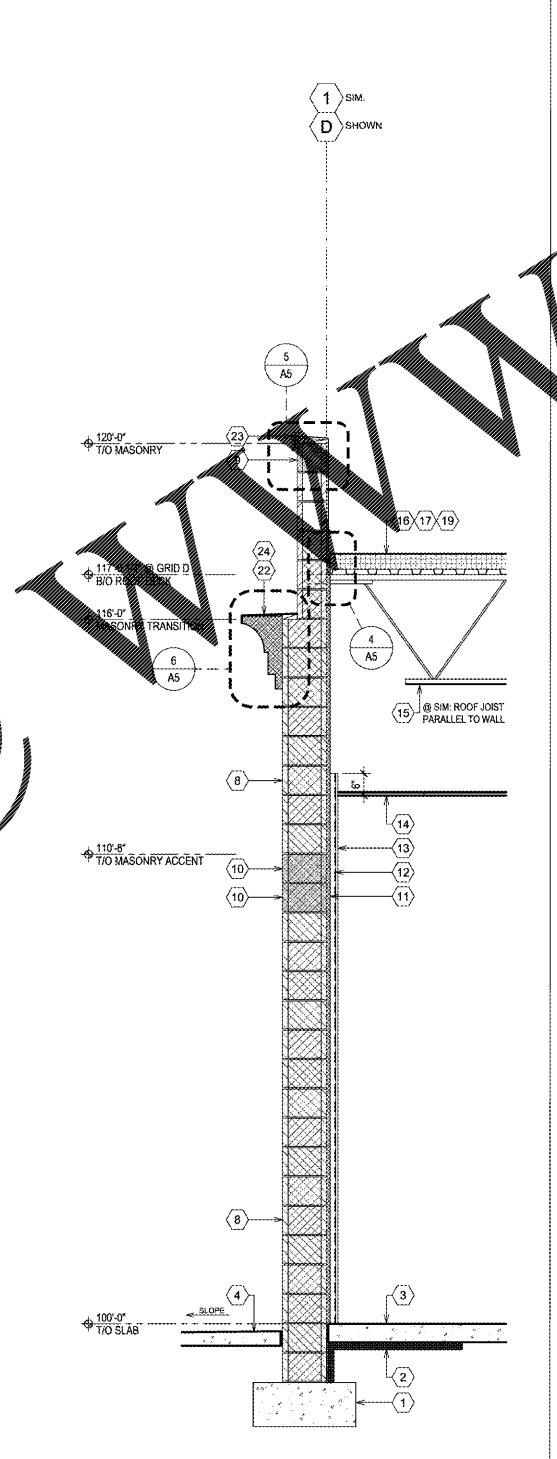
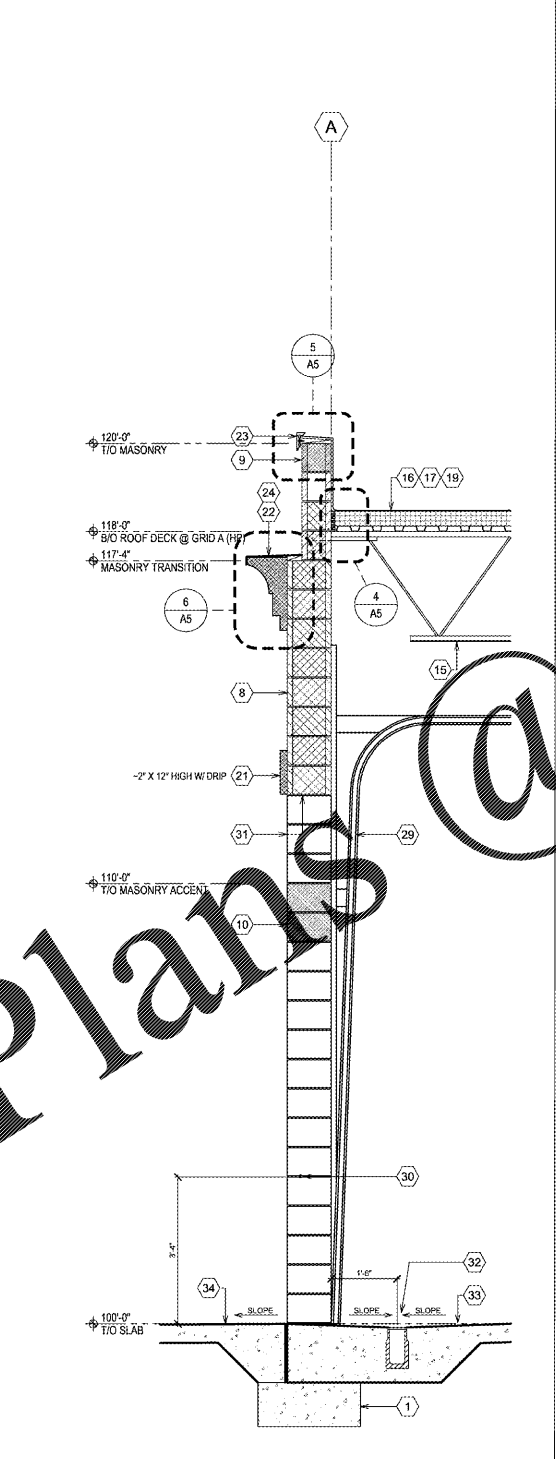
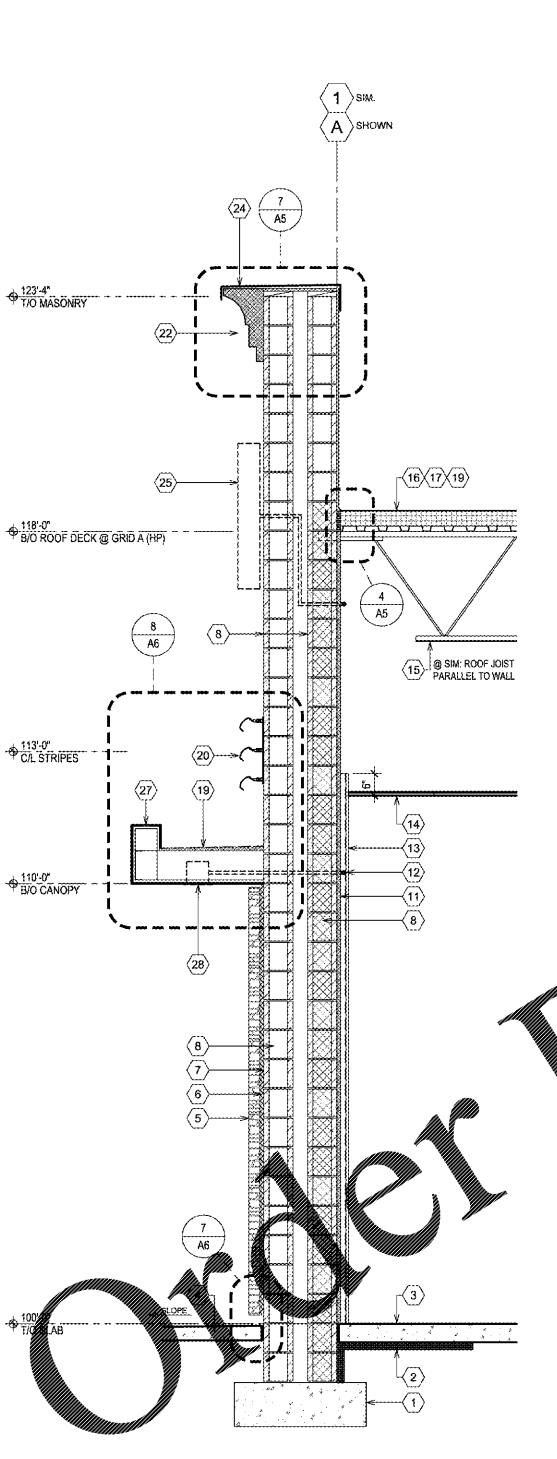


GENERAL NOTES

- SEE SHT A4 EXTERIOR ELEVATIONS AND/OR SHT A1.2 FINISH PLAN FOR FINISH REQUIREMENTS.
- IF BUILDING IS CLASSIFIED AS TYPE 2B CONSTRUCTION, ALL WOOD BLOCKING MUST BE TREATED FOR FIRE-RESISTIVE CONSTRUCTION. REFER TO SHEET T1 FOR VERIFICATION.

KEYED NOTES

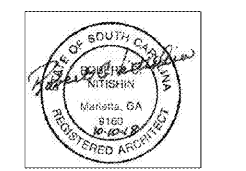
- CONC FOOTING. SEE STRUCTURAL.
- PERIMETER INSULATION (R-10 MIN). 12" VERT + HORIZ REQD W/ 24" VERT MIN.
- CONC SLAB W/ 1/2" MIN EXPANSION JOINT W/ FIBER FILLER AT WALL.
- CONC SIDEWALK AND/OR ASPHALT (SEE CIVIL). ENSURE POSITIVE DRAINAGE IS PROVIDED AWAY FROM BUILDING STRUCTURE.
- MANUF STONE VENEER IN MORTAR BED W/ METAL LATH. REFER TO MANUFACTURER FOR INSTALLATION REQUIREMENTS.
- 1/2" DRAINAGE MAT FULL HEIGHT BEHIND STONE VENEER.
- WEATHER RESISTIVE BARRIER (WRB). INSTALL MANUF RECOMMENDED PRODUCT FOR FINISH MATERIAL SCHEDULED.
- CMU W/ CORE-FILL TO ONE COURSE ABOVE ROOF DECK MIN. SEE STRUCTURAL FOR REQUIRED BLOCK SIZES AND REINFORCING. PROVIDE SPLIT-FACED BLOCK WHERE VISIBLE TO THE EXTERIOR. STANDARD BLOCK SHALL BE USED ELSEWHERE U.N.O.
- SMOOTH FACE CMU ACCENT BAND - SHOWN SHADED.
- SPLIT-FACED CMU ACCENT BAND - SHOWN SHADED.
- 1" WALL INSULATION (R-5@ MIN). EXTEND FROM SLAB TO B/O ROOF DECK.
- 2 1/2" MTL STUD FURRING, MIN. REFER TO SHT A1 PARTITION SCHEDULE.
- INTERIOR SHEATHING. REFER TO SHT A1 PARTITION SCHEDULE.
- INTERIOR CEILING TILE AS SCHEDULED.
- STL ROOF JOIST. SEE STRUCTURAL.
- MTL ROOF DECK. SEE STRUCTURAL.
- ROOF INSULATION (R-30@ MIN). SEE ENERGY CALCS FOR REQ.
- FLEXIBLE VAPOR RETARDER WITH COMPRESSIBLE INSUL @ ROOF DECK EDGE.
- NOT USED.
- PRE-FINISHED BRANDING STRIPES. COORD W/ VENDOR.
- HD FOAM HEADER. SEE DETAIL.
- HD FOAM CORNICE. SEE DETAIL.
- METAL FASCIA W/ RETAINER.
- PREFIN MTL CAP COPING W/ 1" STANDING SEAM END JOINTS.
- PROPOSED SIGNAGE LOCATION (BY OTHER). GC TO PROVIDE J-BOX AND CONDUIT FOR ELEC CONNECTION (SEE ELEC). COORDINATE FINAL LOCATION W/ SIGN VENDOR.
- NOT USED.
- LIGHT GAUGE FRAMED CANOPY. SEE ALSO STRUCTURAL.
- RECESSED CANOPY LIGHTING. SEE ALSO ELEC.
- OVERHEAD DOOR AND TRACK BEYOND.
- 1 1/4" X 4 1/4" S-HOOKS TO BE INSTALLED AT EA SIDE OF ALL OH DOOR LOCATIONS. SAFETY CHAINS TO BE PROVIDED BY OWNER.
- PAINT CMU OH DOOR JAMBS TO MATCH ADJACENT FACE.
- TRENCH DRAIN. SEE PLUMBING. SEE ALSO STRUCT.
- SLOPED CONC SLAB. SEE STRUCT.
- CONCRETE APRON AT OH DOORS.



CONSULTANT:
ROBERT D. NITISHIN, AIA
 ARCHITECT
 2265 ROSWELL ROAD
 SUITE 100
 MARIETTA, GEORGIA 30062
 770-509-4894 TELEPHONE
 770-509-2207 FACSIMILE

CLIENT:
TBC CORPORATION
 430 TBC WAY
 PALM BEACH GARDENS
 FLORIDA 33410

PROJECT INFORMATION:
MTFB
 TYPE P SERVICE STRIPS
 GREER, SOUTH CAROLINA



PROJECT NO.	20180011
DRAWN BY:	
CHECKED BY:	
ISSUE:	DATE:
ISSUED FOR PERMIT:	10/10/2018
REVISION:	DATE:

SHEET TITLE:
WALL SECTIONS AND DETAILS
 SHEET NUMBER:
A5

WWW.LDILINE.COM

Order Plans @