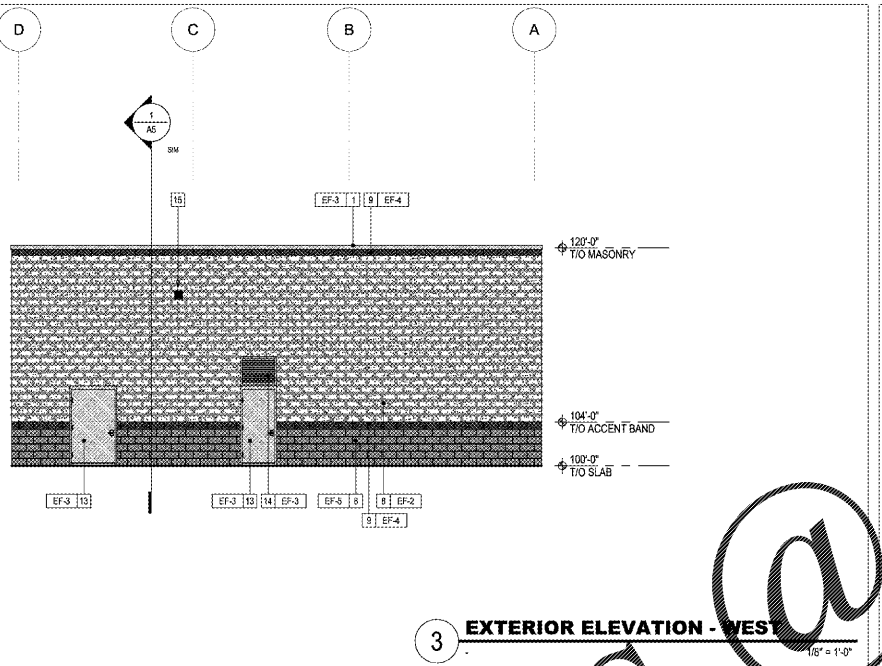
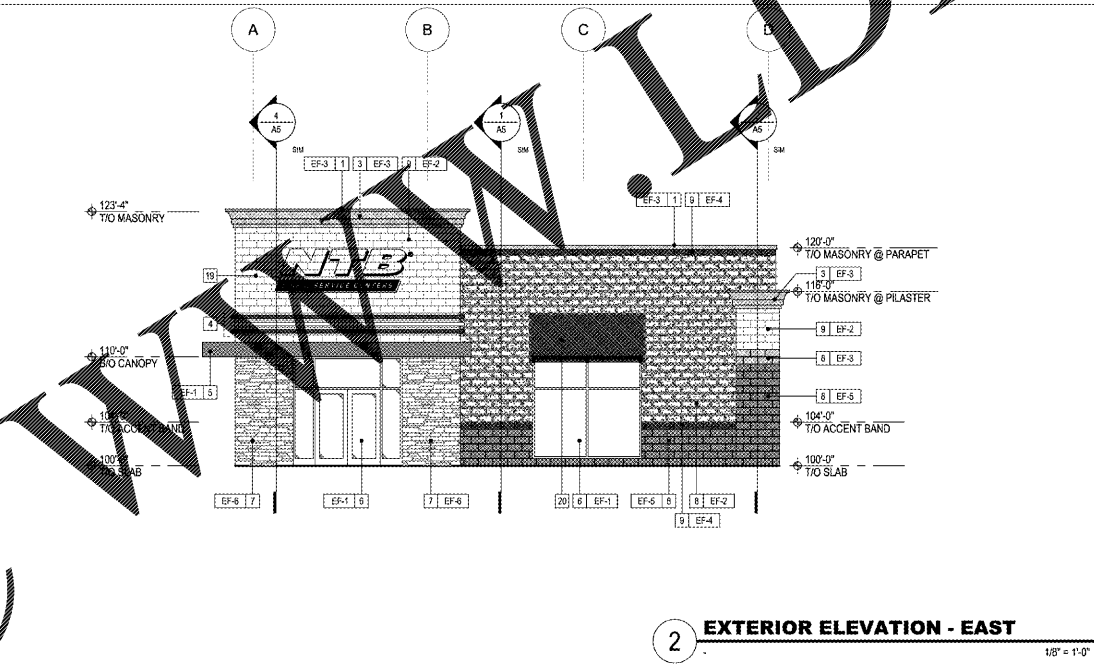


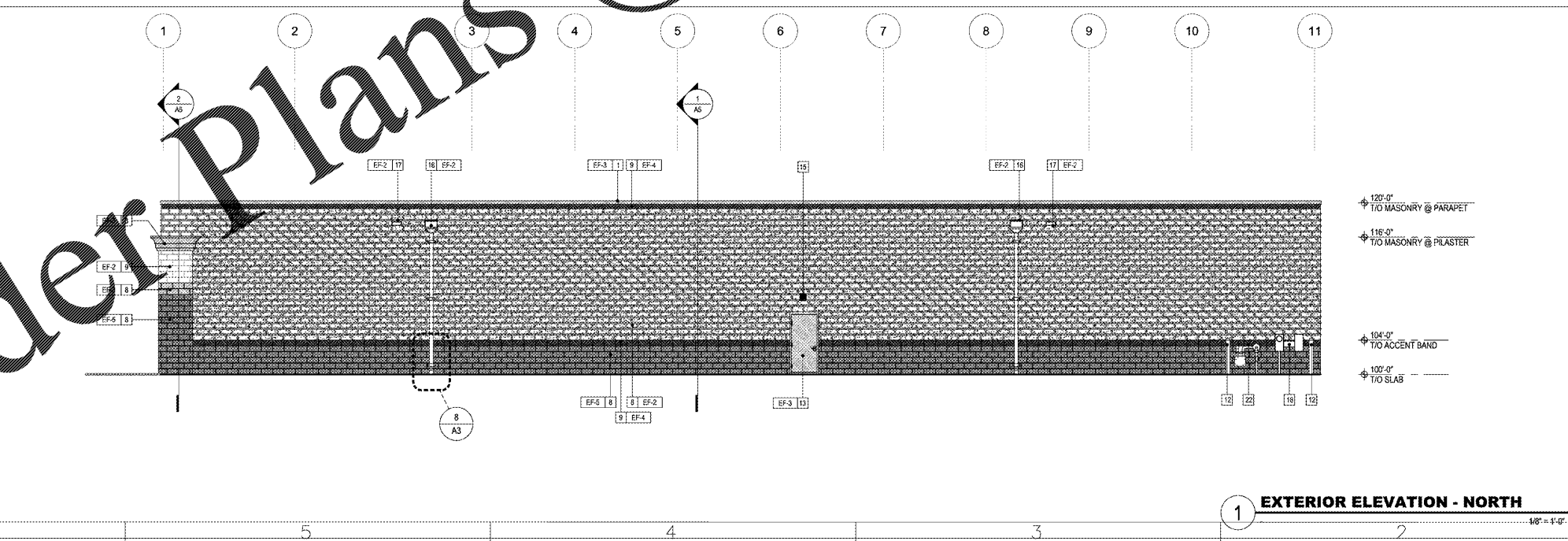
4 EXTERIOR ELEVATION - SOUTH
1/8" = 1'-0"



3 EXTERIOR ELEVATION - WEST
1/8" = 1'-0"



2 EXTERIOR ELEVATION - EAST
1/8" = 1'-0"



1 EXTERIOR ELEVATION - NORTH
1/8" = 1'-0"

EXTERIOR FINISHES

KEY	MATERIAL	COLOR	REMARKS
EF-1	PAINT	TO MATCH ALLUM "DARK BRONZE"	SEMI-GLOSS
EF-2	PAINT	SW 6108 "KILM BEIGE"	SATIN
EF-3	PAINT	SW 6108 "LATTE"	SATIN
EF-4	PAINT - NTB	SW 6967 "FRANK BLUE"	SEMI-GLOSS
EF-5	PAINT	SW 6172 "HARDWARE"	SEMI-GLOSS
EF-6	STONE VENEER	ELDORADO CLIFFSTONE "MESQUITE"	DRY STACK
EF-7	PAINT	SW #4084 "SAFETY YELLOW"	PROTECTIVE COATING

NOTES:
1. SIGNAGE SHOWN FOR REFERENCE ONLY.
2. COLOR SPECIFIED IS SHERWIN WILLIAMS PAINT.

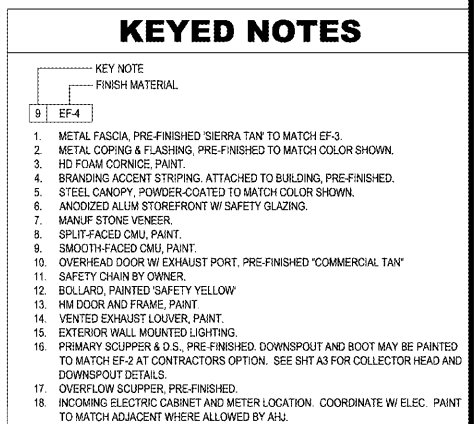
SYMBOLS LEGEND

GRAPHIC	DESCRIPTION
[Pattern]	EF-4: CMU BRANDING BAND
[Pattern]	EF-5: CMU BASE
[Pattern]	EF-6: STONE VENEER

KEYED NOTES

KEY NOTE FINISH MATERIAL

- METAL FASCIA, PRE-FINISHED "SIERRA TAN" TO MATCH EF-3.
- METAL COPING & FLASHING, PRE-FINISHED TO MATCH COLOR SHOWN.
- HD FOAM CORNICE, PAINT.
- BRANDING ACCENT STRIPING, ATTACHED TO BUILDING, PRE-FINISHED.
- STEEL CANOPY, POWDER-COATED TO MATCH COLOR SHOWN.
- ANODIZED ALLUM STOREFRONT W/ SAFETY GLAZING.
- MANUF STONE VENEER.
- SPLIT-FACED CMU, PAINT.
- SMOOTH-FACED CMU, PAINT.
- OVERHEAD DOOR W/ EXHAUST PORT, PRE-FINISHED "COMMERCIAL TAN".
- SAFETY CHAIN BY OWNER.
- BOLLARD, PAINTED "SAFETY YELLOW".
- HM DOOR AND FRAME, PAINT.
- VENTED EXHAUST LOUVER, PAINT.
- EXTERIOR WALL MOUNTED LIGHTING.
- PRIMARY SCUPPER & D.S., PRE-FINISHED. DOWNSPOUT AND BOOT MAY BE PAINTED TO MATCH EF-2 AT CONTRACTORS OPTION. SEE SHT A3 FOR COLLECTOR HEAD AND DOWNSPOUT DETAILS.
- OVERFLOW SCUPPER, PRE-FINISHED.
- INCOMING ELECTRIC CABINET AND METER LOCATION. COORDINATE W/ ELEC. PAINT TO MATCH ADJACENT WHERE ALLOWED BY A/E.
- PROPOSED SIGN LOCATION. SHOWN FOR REFERENCE ONLY. SIGN VENDOR TO INSTALL UNDER SEPARATE PERMIT. GC TO PROVIDE EXTERIOR GRADE PLYWOOD SUBSTRATE OR SHEATHING AT ALL SIGN LOCATIONS.
- FABRIC AWNING & FRAME. FRAME TO BE PAINTED TO MATCH EF-1.
- "STEEL LOOK" HD FOAM HEADER, PAINT.
- INCOMING GAS SERVICE.



CONSULTANT:
ROBERT C. NITISHIN, AIA
ARCHITECT
2265 ROSWELL ROAD
SUITE 100
MARIETTA, GEORGIA 30062
770-509-4894 TELEPHONE
770-509-2207 FACSIMILE

CLIENT:
TBC CORPORATION
430 TBC WAY
PALM BEACH GARDENS
FLORIDA 33410

PROJECT INFORMATION:
NTTB
TIRE & SERVICE CENTERS
GREER, SOUTH CAROLINA



PROJECT NO.: 20180011
DRAWN BY:
CHECKED BY:
ISSUE DATE:
ISSUED FOR PERMIT 10/10/2018

REVISION: DATE:

SHEET TITLE:
EXTERIOR ELEVATIONS
SHEET NUMBER:
A4

Order Plans @

WWW.LDILLING.COM