

# ROOF PLAN NOTES

## GENERAL NOTES

- TO ROOF ELEVATION = TO INSULATION
- ROOF DRAIN SCUPPER WITH DOWNSPOUT AND CONDUCTOR HEAD TO PROVIDE PRIMARY ROOF DRAINAGE. OVERFLOW SCUPPERS PROVIDED AS SECONDARY DRAINAGE SYSTEM.

CONSULTANT:

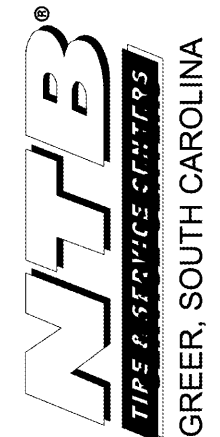
**ROBERT C. NITISHIN, AIA**  
**ARCHITECT**  
 2265 ROSWELL ROAD  
 SUITE 100  
 MARIETTA, GEORGIA 30062  
 770-509-4894 TELEPHONE  
 770-509-2207 FACSIMILE

CLIENT:



430 TBC WAY  
 PALM BEACH GARDENS  
 FLORIDA 33410

PROJECT INFORMATION:



SEAL:



PROJECT NO. 20180011

DRAWN BY:

CHECKED BY:

ISSUE: DATE:

ISSUED FOR PERMIT 10/10/2018

REVISION: DATE:

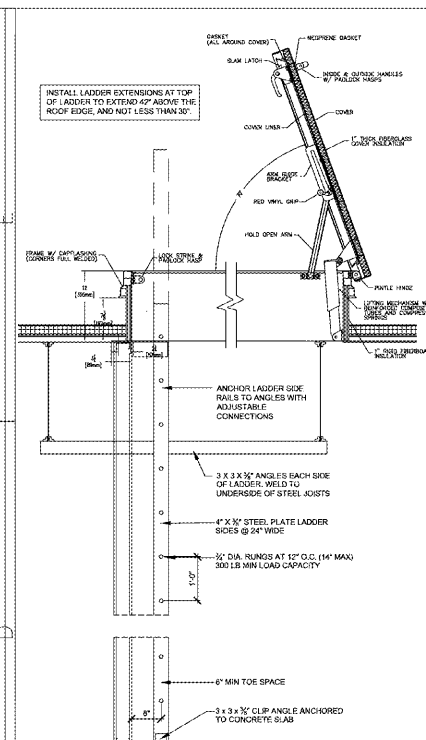
1 PLAN REVIEW COMMENT 11/21/18

SHEET TITLE:

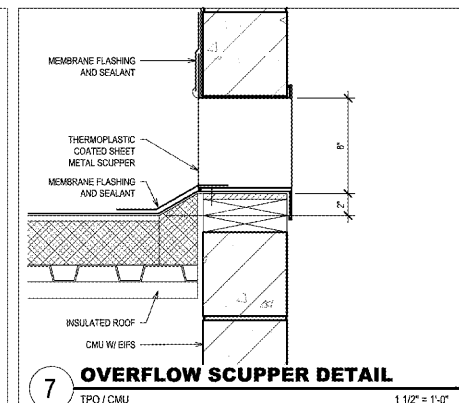
**ROOF PLAN**

SHEET NUMBER:

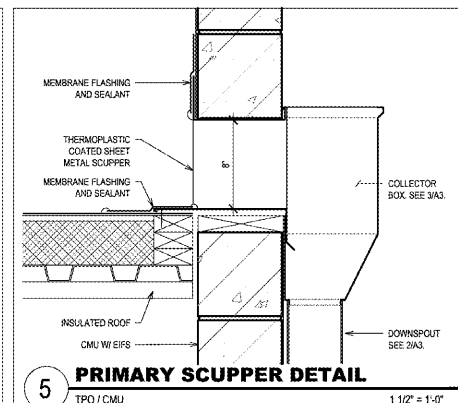
**A3**



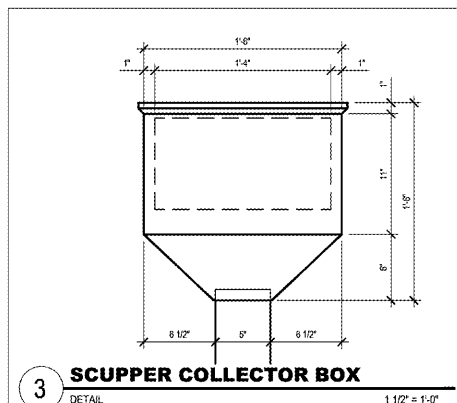
**9 SECTION @ ROOF HATCH / LADDER**  
 1/2" = 1'-0"



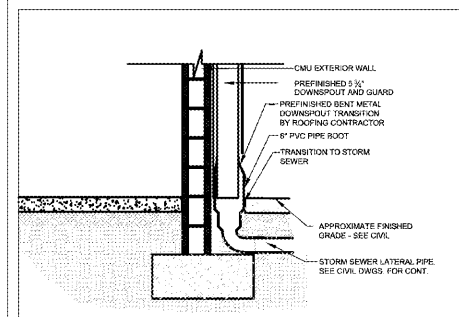
**7 OVERFLOW SCUPPER DETAIL**  
 TPO / CMU 1 1/2" = 1'-0"



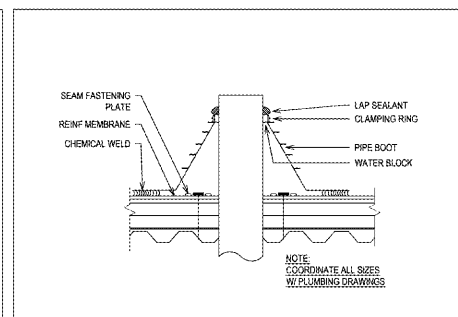
**5 PRIMARY SCUPPER DETAIL**  
 TPO / CMU 1 1/2" = 1'-0"



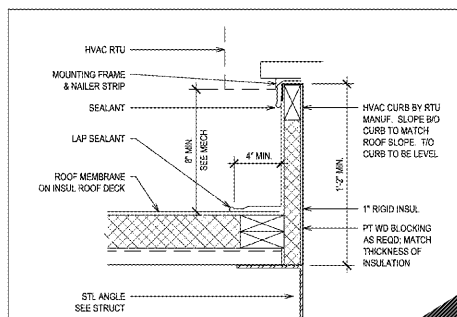
**3 SCUPPER COLLECTOR BOX**  
 DETAIL 1 1/2" = 1'-0"



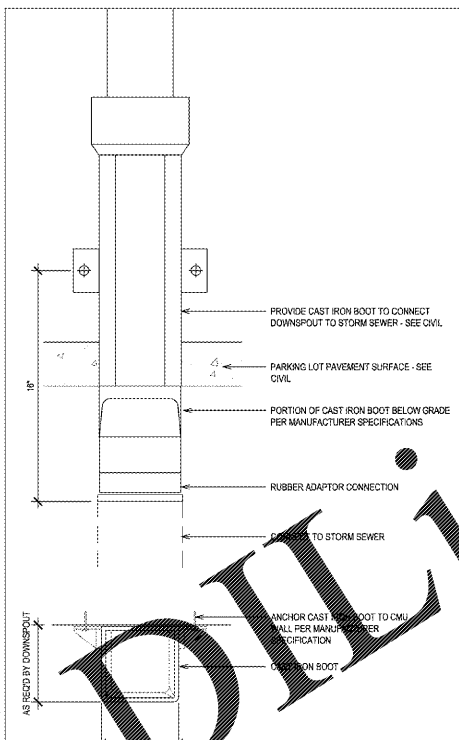
**8 DOWNSPOUT TRANSITION DETAIL**  
 SCALE 1/2" = 1'-0"



**6 ROOF PIPE PENETRATION**  
 DETAIL 1 1/2" = 1'-0"



**4 MECHANICAL ROOF CURB**  
 DETAIL 1 1/2" = 1'-0"



**2 DOWNSPOUT GUARD**  
 DETAIL 1 1/2" = 1'-0"

NOTE:  
 SMOKE AND HEAT REMOVAL WILL BE PROVIDED BY THE INSTALLATION OF AUTOMATIC OPERATING SMOKE AND HEAT VENTS AT THE ROOF. REQUISITE VENT AREA IS CALCULATED IN ACCORDANCE WITH 910.3.3 EQUATION 9-4,  $A_v = A_w \times 90$ . BASED ON THE FLOOR AREA OF 1,760 SF A MINIMUM VENT AREA OF 35.2 SF WILL BE REQUIRED; HOWEVER, BASED ON STANDARD VENT SIZES IT IS ANTICIPATED THAT 48 SF OF VENT AREA WILL BE PROVIDED, RESULTING IN AN EFFECTIVE VENT AREA TO FLOOR AREA RATIO OF 1:37. VENT DIMENSIONS SHALL BE NO LESS THAN 18 SF AND WILL HAVE NO DIMENSION LESS THAN 4 FEET. VENT CENTERS WILL NOT EXCEED 100 FEET IN SPACING. VENTS WILL BE LESS THAN 50 FEET FROM THE WALLS, WILL BE LOCATED 20 FEET OR MORE FROM LOT LINES, AND WILL BE LOCATED 10 FEET OR MORE FROM FIRE BARRIERS. THE OPERATING TEMPERATURE OF THE HEAT RESPONSIVE DEVICE WILL BE BETWEEN 100 DEGREES F AND 220 DEGREES F.

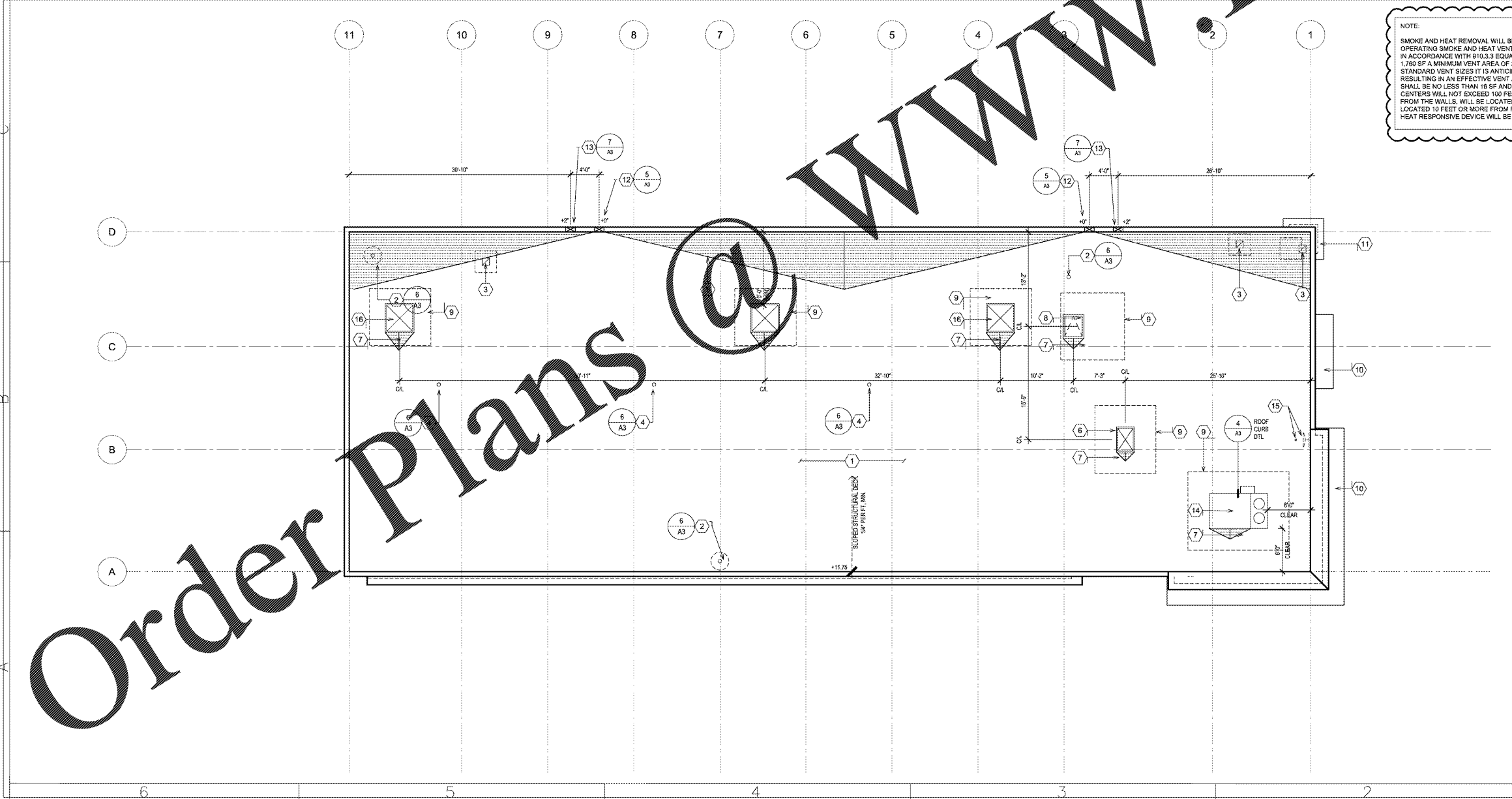
### ROOF DRAINAGE CALCULATIONS

|   |   |
|---|---|
| SCUPPER DRAIN W/ VERTICAL LEADERS DISCHARGE |   |
| HORIZONTAL ROOF SURFACE                     | 6,586 SF                                  |
| VERTICAL ROOF SURFACE                       | NOT INCLUDED                              |
| TOTAL PROJECTED ROOF AREA:                  | 6,586 SF                                  |
| 100 YEAR 1-HOUR RAIN FALL RATE:             | 3" PER HOUR                               |
| REQD GPM BASED UPON ROOF AREA:              | 0.0104 X 3" X 6,586 SF = 206 GPM REQUIRED |
| VERTICAL LEADER SIZE:                       | 5" X 8"                                   |
| LEADER CAPACITY:                            | 563 GPM X 2 LEADERS = 1,126 GPM PROVIDED  |
| REQUIRED SCUPPER SIZE:                      | 8" HIGH X 14" WIDE MIN (4" MIN HEAD)      |
| REQUIRED OVERFLOW SCUPPER SIZE:             | EQUAL TO PRIMARY                          |

### KEYED NOTES

- THERMOPLASTIC (TPO) ROOFING MEMBRANE OVER POLY-ISO INSULATION ON MTL. ROOF DECK. (R 35) MIN
- VENT PIPE THROUGH ROOF (VTR) STRUCTURE AND MEMBRANE. SEE MECH. COORDINATE ACTUAL LOCATION IN FIELD.
- EXHAUST THROUGH ROOF STRUCTURE AND MEMBRANE. SEE MECH. COORDINATE ACTUAL LOCATION IN FIELD.
- FLUE FOR INFRARED HEATER BELOW. SEE MECH. COORDINATE ACTUAL LOCATION IN FIELD.
- TAPERED INSULATION. (SHOWN HATCHED)
- AIR INTAKE VENT. SEE MECH. COORD ACTUAL LOCATION IN FIELD
- INSULATION CRICKET TO PROVIDE POSITIVE DRAINAGE AROUND ROOF-TOP EQUIPMENT. (SHOWN HATCHED)
- 30' X 30' ROOF ACCESS HATCH. SEE WALL SECTIONS
- ROOF TRAFFIC WALKWAY PATH. SEE SPECS.
- AWNING OR CANOPY ROOF BELOW.
- PREFIN MTL WALL CAP, COPING, AND FASCIA. SEE EXTERIOR ELEVATIONS FOR FINISH REQUIREMENTS
- 8" H X 14" W MIN PRIMARY ROOF SCUPPER WITH 4" Ø MIN LEADER DOWNSPOUT.
- OVERFLOW ROOF SCUPPER. SIZE SHALL MATCH PRIMARY ROOF SCUPPER.
- ROOF TOP UNIT (RTU). SEE MECH
- SATELLITE DISH BY TENANT/VENDOR. MOUNTED TO BACK OF PARAPET. GC TO COORDINATE LOCATION IN FIELD. PROVIDE 1" Ø GROSS/NECK CONDUIT THROUGH ROOF FOR REPAIR/REMOVAL INSTALLATION.
- 4" Ø X 4'-0" HEAT AND SMOKE VENT.

### 1 ROOF PLAN



Order Plans



NORTH