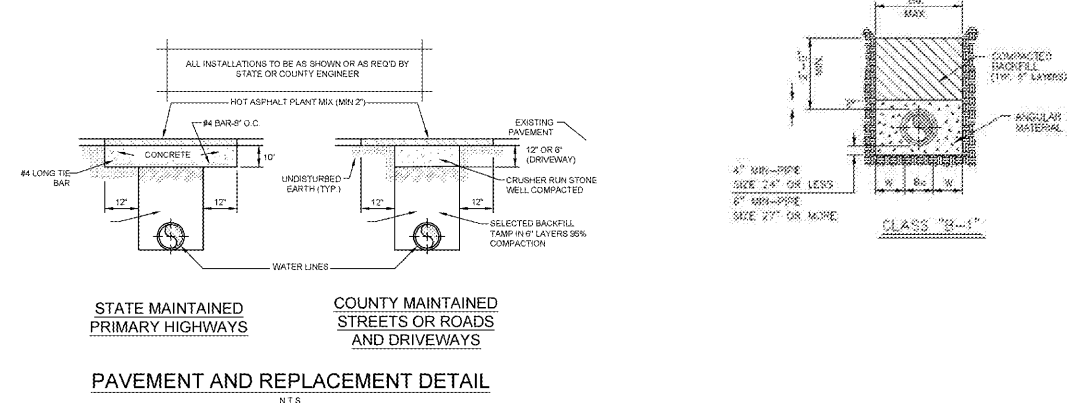
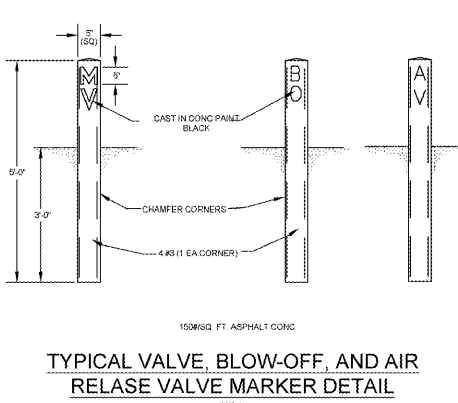
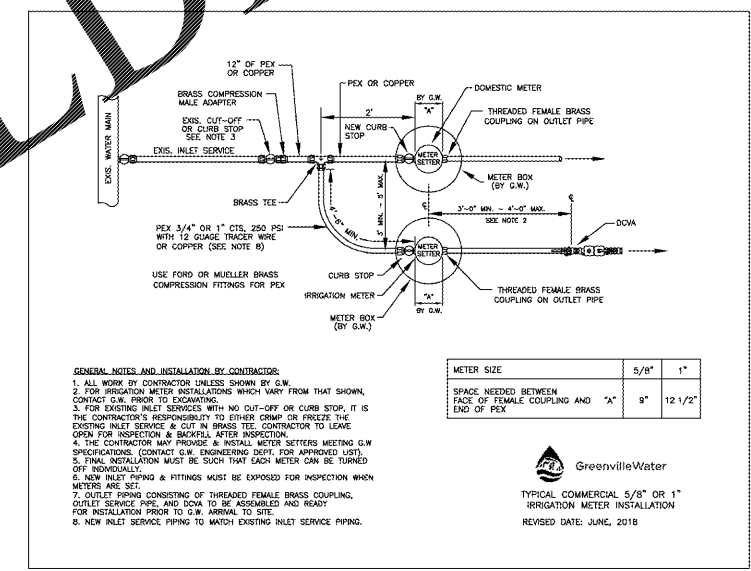
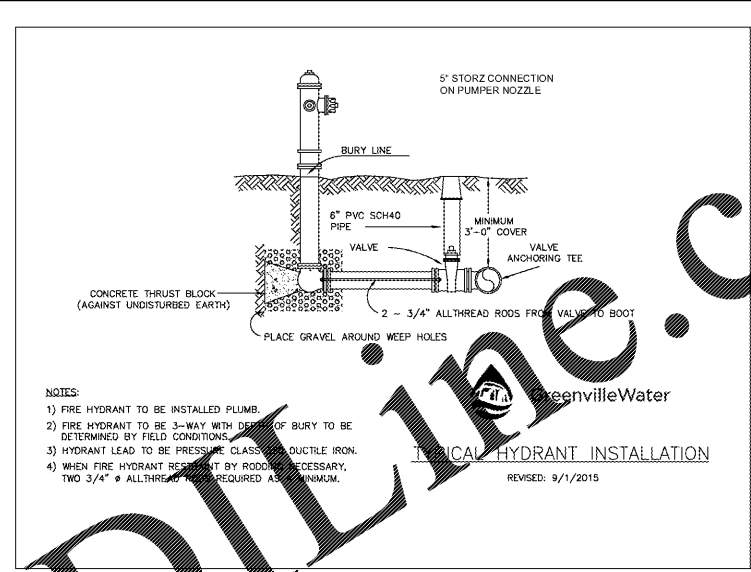


MINIMUM DIMENSIONS FOR CONCRETE BLOCKING

BEND SIZE	A	B	C	D
11 1/4"	12"	12"	12"	12"
22 1/2"	12"	12"	12"	12"
45"	12"	12"	12"	12"
90"	12"	12"	12"	12"

NOTE: SOIL CONDITIONS SHALL BE VERIFIED BY G. W. FIELD ENGINEER PRIOR TO DESIGN.

DESIGN DATA:
 - DIMENSIONS OF THRUST BLOCK IN FEET BASED ON 2000 POUNDS PER SQUARE FOOT SOIL BEARING PRESSURE AND 200 POUNDS PER SQUARE INCH TEST PRESSURE.
 - CONCRETE SHALL HAVE A COMPRESSIVE STRENGTH OF 3000 PSI AT 28 DAYS. HIGH EARLY CONCRETE SHALL BE USED.



ENGINEER: **FORENTE GROUP**
 Forente Group, Inc. | www.fg-inc.net
 3750 Peachtree Industrial Blvd., Suite 300 | 770.368.1399
 Peachtree City, GA 30092 | 770.368.1944

PROJECT: **NTB**
 TIRES • SERVICE • BRAKES • BATTERIES
 107-111 BRANNON DRIVE
 GREER, SC 29651
 PARCEL # TO15000300300 & TO15000300301.

SEAL: **JOHN C. BRANNON**
 SOUTH CAROLINA PROFESSIONAL ENGINEER
 No. 34332
 11/5/18

REVISIONS	DATE
JURISDICTIONAL COMMENTS	2018-11-02
JURISDICTIONAL COMMENTS	2018-11-09
JURISDICTIONAL COMMENTS	2018-11-14
JURISDICTIONAL COMMENTS	2018-11-19
JURISDICTIONAL COMMENTS	2018-11-28

PROJECT MANAGER: JMJ
 DRAWING BY: JAM
 JURISDICTION: GREER, SC
 DATE: 2018-09-21
 SCALE: AS SHOWN
 TITLE: UTILITY DETAILS

SHEET NUMBER: **C-7**

COMMENTS: PERMIT SET
 JOB/FILE NUMBER: 814.026

Order Plans @

South Carolina 811