

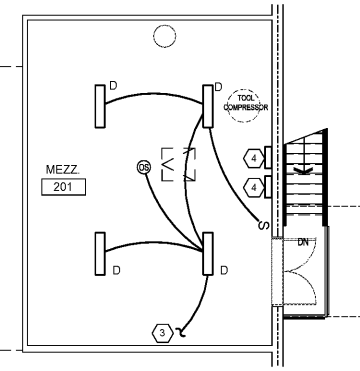
**1 LIGHTING PLAN**  
E-101 SCALE: 1/8" = 1'-0"

**LIGHTING PLAN CONSTRUCTION NOTES:**

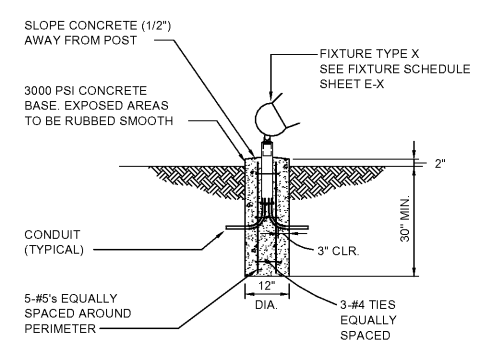
- OCCUPANCY SENSOR SWITCHES IN SLEEPING ROOMS SHALL BE PLACED IN VACANCY MODE.

**LIGHTING PLAN KEYED NOTES:**

- #10 AWG ENTIRE CIRCUIT. PROVIDE PHOTOCELL AND TIME CLOCK TO CONTROL TYPES J, K, AND M ON THIS CIRCUIT.
- PARALLEL OCCUPANCY SENSORS IN THIS ROOM.
- CONTINUE CIRCUIT TO MEZZANINE LIGHTING.
- PROVIDE EMERGENCY BACKUP INVERTER DUAL-LITE LED OR APPROVED EQUAL. COORDINATE WITH OWNER.
- SEE MECHANICAL DRAWINGS FOR FAN INFORMATION.

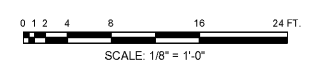


**2 MEZZANINE LIGHTING PLAN**  
E-101 SCALE: 1/8" = 1'-0"



NOTE:  
POUR CONCRETE AGAINST UNDISTURBED EARTH

**3 GROUND MOUNT DETAIL**  
E-101 SCALE: N.T.S.



1980  
architects • engineers • interior architects  
**JOHNSON, LASCOBOR & ASSOCIATES, P.C.**  
AUGUSTA, GA • MT. PLEASANT, SC  
TEL: (706) 724-5756 • TEL: (843) 619-4656  
FAX: (706) 724-3935  
WWW.THEJLAGROUP.COM

CLIENT: AUGUSTA, GA  
535 TELFAIR STREET, AUGUSTA, GA 30901  
PROJECT NAME: **FIRE STATION #2**  
PROJECT LOCATION: 928 TELFAIR ST., AUGUSTA, GA 30901

REV	DATE	BY	DESCRIPTION
0	08/29/18	FAK	ISSUED FOR PERMITTING

PROJECT NO. 3042.1604  
DRAWN BY: JAP/JFP  
CHECKED BY: FAK  
DATE: 10/18/17

SHEET TITLE: **LIGHTING PLAN**  
SCALE: AS NOTED  
DRAWING NO. **E-101** REV. **0**

Order Plans @ www.LedLine.com

This document is the property of Johnson, Lascobor & Associates, P.C. The unauthorized reproduction, copying or otherwise use of this document is strictly prohibited and any infringement thereupon may be subject to legal action.