

MARK	FIXTURE	NOM. PIPE, INCHES				DESCRIPTION
		CW	HW	W	V	
P-1	SHOWER HEAD AND MIXING VALVE	1/2"	1/2"	-	-	SYMMONS ORIGINS S-9601-P-X
P-2	COUNTERTOP LAVATORY (H.C.)	1/2"	1/2"	2"	1 1/2"	AMERICAN STANDARD 0476 028 ACCESSIBLE LAVATORY, AMERICAN STANDARD 7385 003 VDS FAUCET, GRID DRAIN, ANGLE STOPS, & 3/8" SUPPLIES, PLUMBEREX HANDY-SHIELD MODEL 2003
P-3	WATER CLOSET (H.C.)	1/2"	-	4"	2"	AMERICAN STANDARD CADET PRO 215FA 104, 1.28 GAL. FLUSH w/ CHURCH 295C TOILET SEAT
P-4	SAFETY SHOWER w/ EYE WASH	1 1/4"	1 1/4"	-	-	HAWS MODEL 8320-8325 COMBINATION SHOWER & EYE/FACE WASH w/ HAWS MODEL 9202E THERMOSTATIC MIXING VALVE
P-5	SHOWER HEAD AND MIXING VALVE (H.C.)	1/2"	1/2"	2"	2"	SYMMONS TEMPTROL S-86-1-L-X SHOWER VALVE SYSTEM w/ SYMMONS T-600B-36-V HAND SHOWER
P-6	DOUBLE BOWL SINK w/ DISPOSER	1/2"	1/2"	2"	1 1/2"	JUST DLX-1933-A-GR SINK 19"x33"x10.5" (4 HOLE), #1-35 STRAINERS, AMERICAN STANDARD 4175 501 F15 FAUCET, SUPPLIES, STOP VALVES, AND TRAP, INSINKERATOR MODEL EVOLUTION ESSENTIAL, 3/4 HP MOTOR
P-7	HILO WATER COOLER	1/2"	-	2"	1 1/2"	ACORN MODEL A172108F-UBL
P-8	SINGLE BOWL SINK (H.C.)	1/2"	1/2"	2"	1 1/2"	JUST S-ADA-1313-A-GR SINK 13"x13"x5.5", #J-35 STRAINER, AMERICAN STANDARD 4175 100 F15 FAUCET, SUPPLIES, STOP VALVES, AND TRAP
P-9	MOP BASIN	1/2"	1/2"	3"	2"	FIAT MODEL MSB-2424, FAUCET 830-AA, HOSE & HOSE BRACKET 832-AA, MOP HANGER 889-CC AND STRAINER
P-10	DOUBLE DECON SINK	1/2"	1/2"	2"	2"	ADVANCE TABCO FC-2-1620-18-R FREE STANDING SINK w/ K-105RE SWING SPOUT FAUCET
P-11	WASHER-EXTRACTOR	3/4"	3/4"	3"	2"	UNIMAC MODEL UC40 (40 LB.) HARDMOUNT WASHER-EXTRACTOR. INSTALL PER MANUFACTURERS RECOMMENDATIONS.
SD	SHOWER DRAIN (TILE)	-	-	2"	-	PLASTIC ODDITIES INC. MODEL PBR-410
IB-1	ICE MAKER VALVE	1/2"	-	-	-	PLASTIC ODDITIES INC. MODEL IB-20
WB-1	WASHER BOX	1/2"	1/2"	2"	1 1/2"	PLASTIC ODDITIES INC. MODEL WMB-2VP
WH	WALL HYDRANT	3/4"	-	-	-	J.R. SMITH MODEL 5509QT FOR 15" WALL THICKNESS. WARNING - FAUCET MUST BE INSTALLED w/ DOWNWARD PITCH TOWARD NOZZLE & HOSE MUST BE REMOVED IN FREEZING WEATHER OR FAUCET MAY FREEZE & BURST.
HB	HOSE BIBB	1/2"	-	-	-	WOODFORD MODEL B26P-1/2 w/ BOX
PMP-1	RECIRCULATION PUMP	-	3/4"	-	-	BELL & GOSSETT MODEL NBF-22 w/ TIMECLOCK 120V/10/60Hz (7 GPM @ 10 FOOT HEAD)
GWH-1	GAS WATER HEATER	1 1/4"	1 1/4"	-	-	A.O. SMITH MODEL BTH-150, 100 GALLON CAP. 150,000 BTU/HR INPUT, NATURAL GAS, 120/1/60, RECOVERY RATE OF 178 GPH AT A 100° F TEMP. RISE

NOTES:
 1. ALL FIXTURES, FITTINGS, AND TRIM TO COMPLY WITH THE LATEST REVISION OF THE AMERICAN DISABILITIES ACT, WHERE APPLICABLE.
 2. RIM HEIGHT SHALL COMPLY w/ ADA REQUIREMENTS AND STANDARD MANUFACTURER RECOMMENDED INSTALLATION HEIGHTS FOR NON-ADA FIXTURES.
 3. PLUMBING CONTRACTOR TO COORDINATE w/ COUNTER TOP CONTRACTOR BEFORE ORDERING SINKS.

HANGERS & SUPPORTS				
SPACING: DO NOT EXCEED THE FOLLOWING SPACING, ON CENTERS				
PIPE SIZE	SCH. 40 PVC	COPPER	STEEL	HANGER ROD DIA.
1/2" - 3/4"	4 FT.	5 FT.	7 FT.	1/4"
1"	4 FT.	6 FT.	7 FT.	1/4"
1 1/2"	4 FT.	6 FT.	9 FT.	3/8"
2"	4 FT.	8 FT.	10 FT.	3/8"
2 1/2"	4 FT.	9 FT.	11 FT.	3/8"
3"	4 FT.	10 FT.	12 FT.	3/8"
4"	4 FT.	10 FT.	12 FT.	1/2"

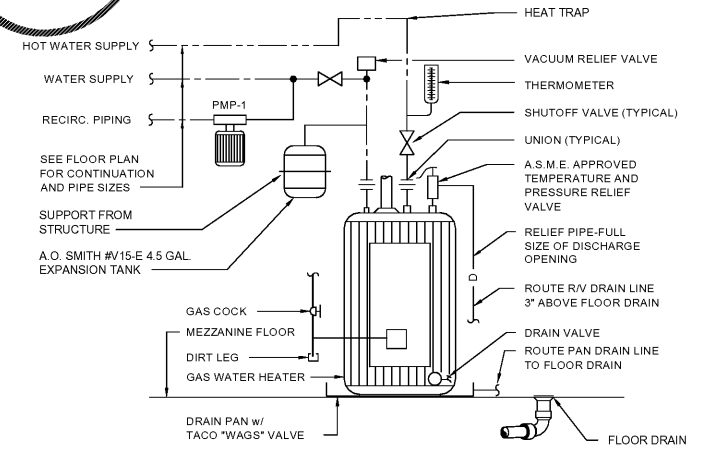
WATER HAMMER ARRESTER SCHEDULE	
SYMBOL	FIXTURE UNIT RATING
PDI "A"	1-11
PDI "B"	12-32
PDI "C"	33-60
PDI "D"	61-113
PDI "E"	114-154
PDI "F"	155-330

NOTE:
 USE METAL-BELLOWS TYPE WITH PRESSURIZED METAL CUSHIONING CHAMBER, COMPLYING WITH STANDARD P.D.I. WH-201.

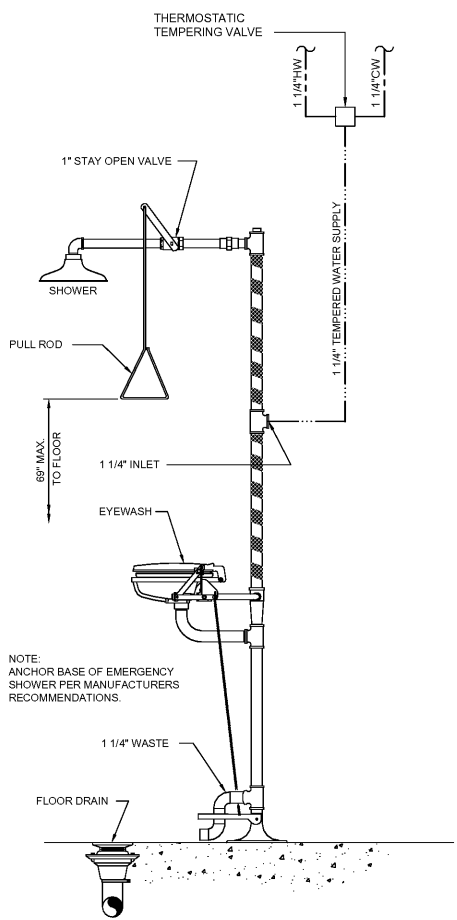
FLOOR DRAIN & CLEANOUT SCHEDULE			
SYMBOL	J.R. SMITH SERIES NO.	PROVIDE	NOTES
FD-1	2473	②	APPARATUS BAYS
FD-2	2010-B	① ②	
GCO	4237		
FCO	4040		
WCO	4452-U		

FLOOR DRAIN & CLEANOUT ACCESSORIES
 ① PROVIDE MANUFAC. RECOMMENDED STRAINER TO BE BASED ON OUTLET SIZE
 ② PROSET TRAP GUARD INSER

NOTES:
 1. PROVIDE PROSET "T-RITE" DRAINS ON ALL FLOOR/SHOWER/HUB DRAINS THAT ARE THROUGH PENETRATION OF A FIRE RATED FLOOR.
 2. COORDINATE FLOOR FINISHES, FLOOR DRAINS AND FLOOR CLEANOUTS. (ADJUST FLOOR DRAIN AND FLOOR CLEANOUT ELEVATIONS AS REQUIRED)



(GWH-1)
GAS WATER HEATER SCHEMATIC
 NO SCALE



NOTE:
 ANCHOR BASE OF EMERGENCY SHOWER PER MANUFACTURERS RECOMMENDATIONS.

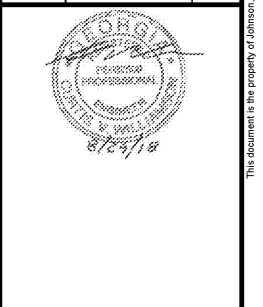
SAFETY SHOWER
 NO SCALE

Order Plans

WWW.LDILINE.COM

1980
 ARCHITECTS ENGINEERS INTERIOR ARCHITECTS
JOHNSON, LASCHOBER & ASSOCIATES, P.C.
 1011 A. GA. • MT. PLEASANT, SC
 TEL: (706) 724-5756 • TEL: (843) 619-4656
 FAX: (706) 724-3935
 WWW.THEJLAGROUP.COM

CLIENT: AUGUSTA, GA
 535 TELFAIR STREET, AUGUSTA, GA 30901
 PROJECT NAME: **FIRE STATION #2**
 PROJECT LOCATION: 928 TELFAIR ST., AUGUSTA, GA 30901



REV	DATE	BY	DESCRIPTION
0	08/29/18	CW	ISSUED FOR PERMITTING

PROJECT NO. 3042.1604
 DRAWN BY: WBR
 CHECKED BY: CVW
 DATE: 10/18/17
 SHEET TITLE:
PLUMBING SCHEDULES AND DETAILS
 SCALE: AS NOTED
 DRAWING NO. **P-301** REV. 0

This document is the property of Johnson, Laschobar & Associates, P.C. The unauthorized reproduction, copying or otherwise use of this document is strictly prohibited and any infringement thereupon may be subject to legal action.