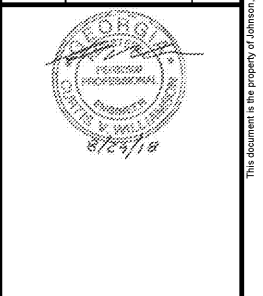


ARCHITECTS ENGINEERS PLANNERS INTERIORS  
 JOHNSON, LASCORBER & ASSOCIATES, P.C.  
 535 TELFAIR STREET, AUGUSTA, GA 30901  
 TEL: (706) 724-5756 • MT. PLEASANT, SC  
 TEL: (843) 619-4656  
 FAX: (706) 724-3935  
 WWW.THEJLAGROUP.COM

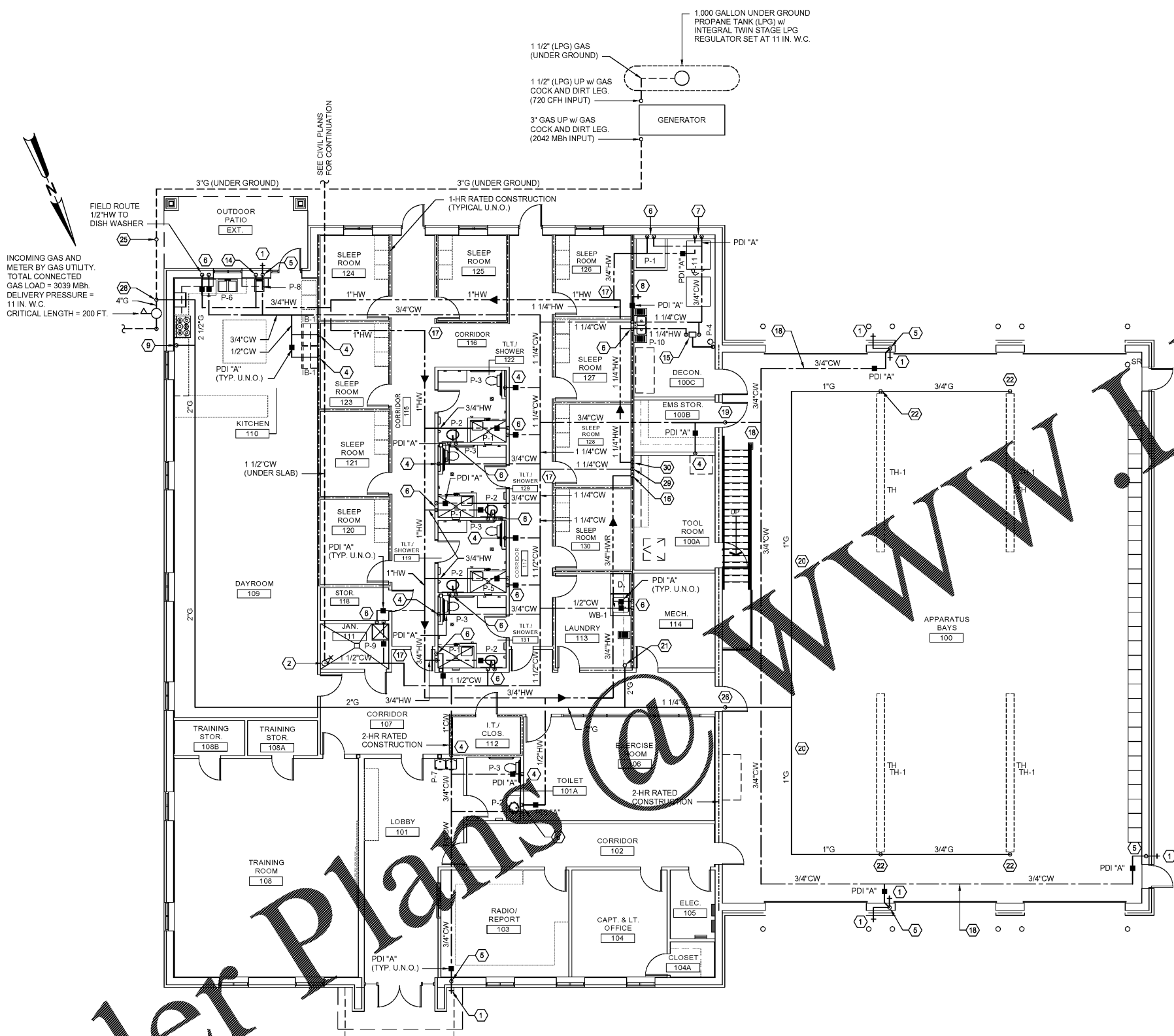


REV	DATE	BY	DESCRIPTION
0	08/29/18	CVW	ISSUED FOR PERMITTING

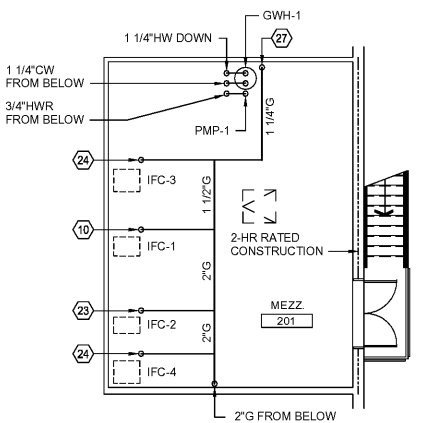
PROJECT NO. 3042.1604  
 DRAWN BY: WBR  
 CHECKED BY: CVW  
 DATE: 10/18/17  
 SHEET TITLE:  
**POTABLE WATER AND GAS PIPING PLANS**  
 SCALE: AS NOTED  
 DRAWING NO. **P-201** REV. 0

**POTABLE WATER PIPING NOTES:**

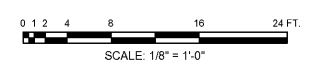
- 1 - 3/4" WH
- 2 - 1 1/2" WATER UP THRU SLAB w/ SLEEVE (COORDINATE w/ GENERAL CONTRACTOR) PROVIDE SHUT-OFF VALVE AND PRESSURE REDUCING VALVE.
- 4 - 1/2" CW DOWN
- 5 - 3/4" CW DOWN
- 6 - 1/2" CW & HW DOWN
- 7 - 3/4" CW & HW DOWN. STUB 3/4" CW & HW THRU WALL WITH SHUT-OFF VALVES. (INSTALL PER MANUFACTURERS RECOMMENDATIONS)
- 8 - 1/2" HB
- 9 - 1 1/4" GAS DOWN w/ GAS COCK AND DIRT LEG. (227 MBH INPUT) PROVIDE GAS SOLENOID VALVE
- 10 - 1" GAS DOWN w/ GAS COCK AND DIRT LEG. (100 MBH INPUT)
- 11 - CONTRACTOR SHALL COORDINATE w/ MANUFACTURERS RECOMMENDATIONS FOR INSTALLATION INSTRUCTIONS FOR FREEZE RESISTANT FIXTURES.
- 12 - 1/2" CW & HW UP
- 13 - 1/2" CW & HW (UNDER SLAB)
- 14 - 1/2" HW DOWN
- 15 - 1 1/4" CW & HW DOWN TO SERVE TEMPERING VALVE FOR SAFETY SHOWER
- 16 - 3/4" HW UP TO MEZZANINE
- 17 - POTABLE WATER PIPING IS LOCATED IN CEILING SPACE. (TYPICAL U.N.O.)
- 18 - ROUTE POTABLE WATER PIPING AS HIGH AS POSSIBLE
- 19 - 3/4" CW UP
- 20 - ROUTE GAS PIPING AS HIGH AS POSSIBLE
- 21 - 2" GAS UP TO SERVE MEZZANINE
- 22 - 3/4" GAS DOWN w/ GAS COCK AND DIRT LEG. (40 MBH INPUT)
- 23 - 3/4" GAS DOWN w/ GAS COCK AND DIRT LEG. (60 MBH INPUT)
- 24 - 1 1/4" GAS DOWN w/ GAS COCK AND DIRT LEG. (227 MBH INPUT)
- 25 - STUB UP 3/4" CW w/ GAS COCK AND DIRT LEG. VALVE CAP FOR FUTURE GRILLE. (MAX. INPUT)
- 26 - 1 1/4" GAS UP
- 27 - 1 1/4" GAS DOWN w/ GAS COCK AND DIRT LEG. (150 MBH INPUT)
- 28 - 2 1/2" G UP AND 3" G DOWN
- 29 - 1 1/4" CW UP TO MEZZANINE
- 30 - 1 1/4" HW FROM MEZZANINE



1 POTABLE WATER AND GAS PIPING PLAN  
 SCALE: 1/8" = 1'-0"



2 MEZZANINE POTABLE WATER AND GAS PIPING PLAN  
 SCALE: 1/8" = 1'-0"



Order Plans @ WWW.LDPLANS.COM

INCOMING GAS AND METER BY GAS UTILITY. TOTAL CONNECTED GAS LOAD = 3039 MBH. DELIVERY PRESSURE = 11 IN. W.C. CRITICAL LENGTH = 200 FT.



NOTE: SEE PLUMBING FIXTURE SCHEDULE FOR INDIVIDUAL FIXTURE RUN-OUT SIZES.