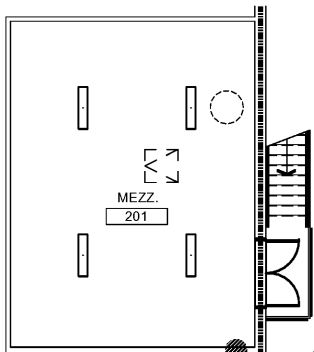
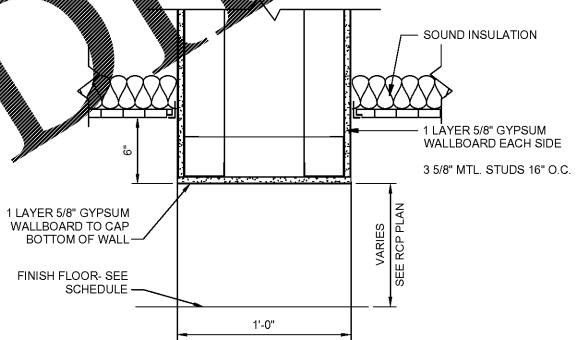


CEILING LEGEND			
	ACOUSTICAL CEILING TILE (2X 4' LAY-IN CEILING PANELS WITH SUSPENDED GRID)		CEILING CAP SOUND BARRIER INSULATION PLATE ABOVE CEILING (2" FROM PERIMETER WALLS)
	HARD CEILING - PAINTED (0.75" GYPSUM BOARD PAINTED)		LAY-IN FIXTURE (9" X 48" LIGHT FIXTURE)
	EXPOSED STRUCTURE PAINTED		LAY-IN FIXTURE (2' X 4' LIGHT FIXTURE)
	EXIT LIGHT		RECESSED LIGHT FIXTURE
	HVAC RETURN (SEE HVAC DWGS)		SUSPENDED FIXTURE
	CEILING EXPOSED TO STRUCTURE ABOVE		WALL MOUNTED FIXTURE
	EMERGENCY FIXTURE		HIGH BAY FLORESCENT
	HVAC DIFFUSER (SEE HVAC DWGS)		EMERGENCY FIXTURE

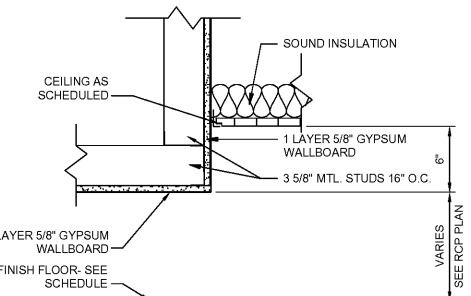
NOTES:
1. SEE ELECTRICAL AND MECHANICAL DRAWINGS FOR ALL RELATED ITEMS
2. SEE ELECTRICAL DRAWINGS FOR FIXTURE SCHEDULE



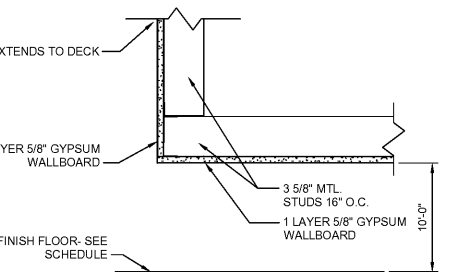
2 REFLECTED CEILING PLAN - MEZZ.
A-201 SCALE: 1/8" = 1'-0"



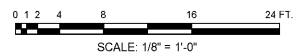
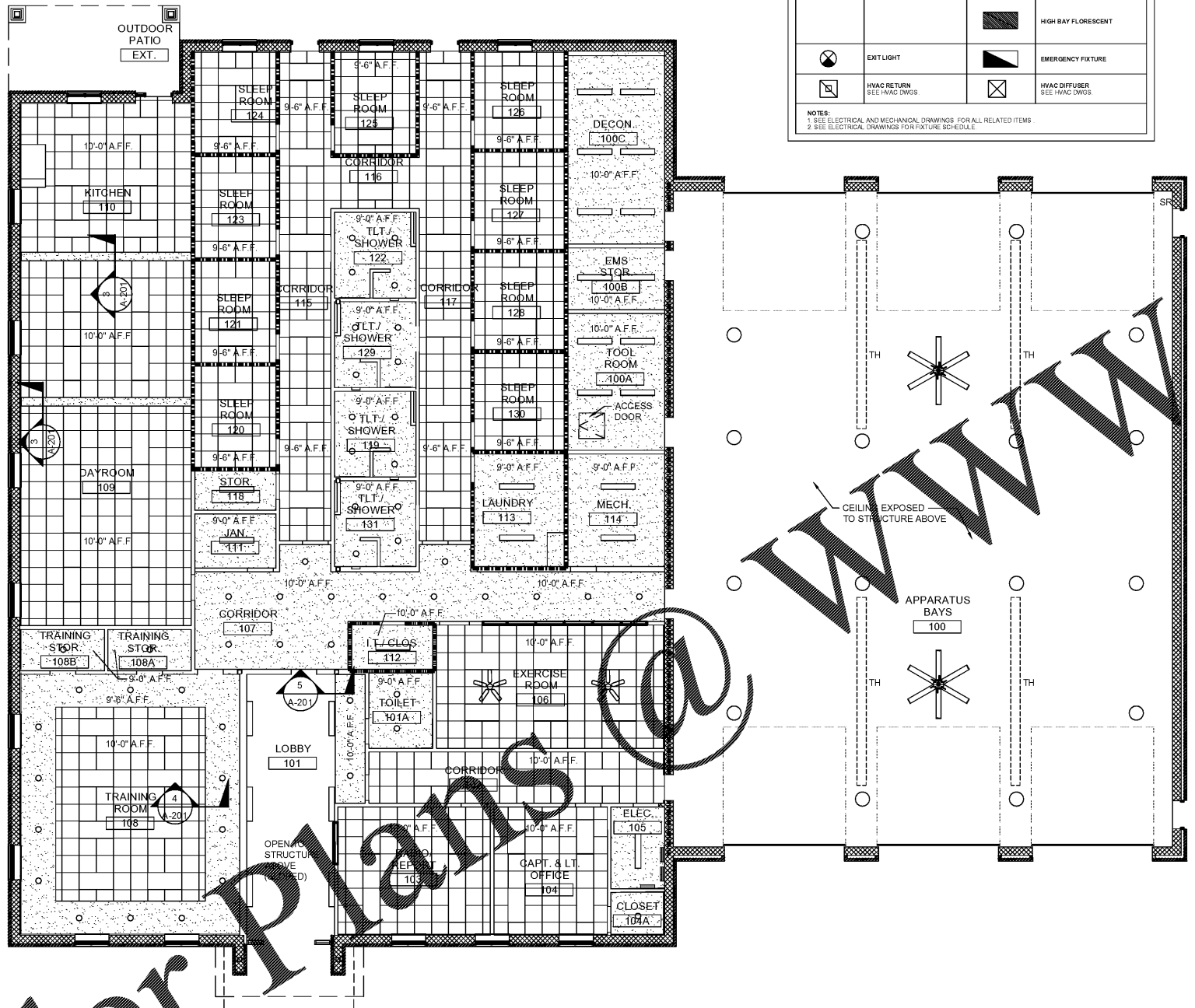
3 BULKHEAD DETAIL
A-201 SCALE: 1/2" = 1'-0"



4 BULKHEAD DETAIL
A-201 SCALE: 1/2" = 1'-0"

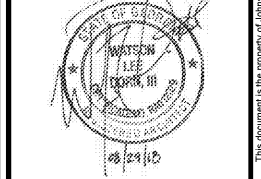


5 BULKHEAD DETAIL
A-201 SCALE: 1/2" = 1'-0"



1980
Architects, Engineers & Planners
JOHNSON, LASCHOBER & ASSOCIATES, P.C.
1001 W. GA. • MT. PLEASANT, SC
TEL (706) 724-5756 • TEL (843) 619-4656
FAX (706) 724-3935
WWW.THEJLAGROUP.COM

CLIENT: AUGUSTA, GA
535 TELFAIR STREET, AUGUSTA, GA 30601
PROJECT NAME: FIRE STATION #2
PROJECT LOCATION: 928 TELFAIR ST., AUGUSTA, GA 30601



REV	DATE	BY	DESCRIPTION
0	08/29/18	WLD	ISSUED FOR PERMITTING

PROJECT NO. 3042.1604
DRAWN BY: DRWN
CHECKED BY: CHK
DATE: 10/18/17

SHEET TITLE:
REFLECTED CEILING PLAN

SCALE: AS NOTED
DRAWING NO. A-201 REV. 0

Order Plans @ www.LDOnline.com

This document is the property of Johnson, Laschober & Associates, P.C. The unauthorized reproduction, copying or otherwise use of this document is strictly prohibited and any infringement thereupon may be subject to legal action.