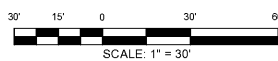


Order Plans

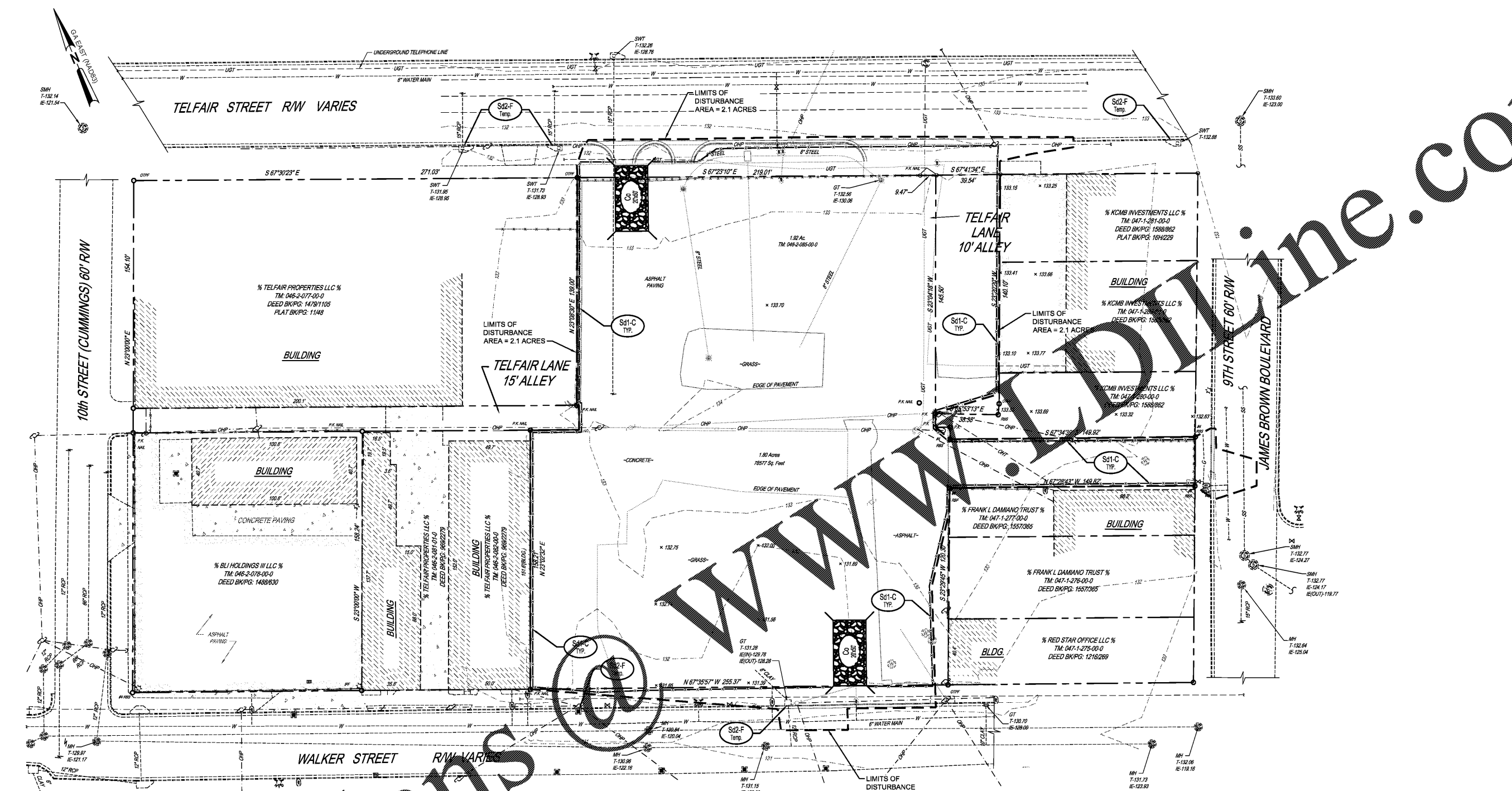
E.S.P.C. PLAN - PHASE I (INITIAL STORAGE & PERIMETER CONTROL)



UTILITY WARNING:
The underground utilities shown have been located from field survey information and existing drawings. The engineer makes no guarantee that the underground utilities shown comprise all such utilities in the area, either in service or abandoned. The engineer further does not warrant that the underground utilities shown are in the exact location indicated although he does certify that they are located as accurately as possible from information available. The engineer has not physically located the underground utilities.

UTILITIES PROTECTION CENTER
GEORGIA811
www.Georgia811.com
Keep what's below.
Call before you dig.
THREE WORKING DAYS BEFORE YOU DIG
(GEORGIA - 1-800-282-7411)

PROJECT NO.	3042.1604
DRAWN BY:	DRWN
CHECKED BY:	CHK
DATE:	10/18/17
SHEET TITLE:	
PHASE I E.S.P.C. PLAN (INITIAL STORAGE & PERIMETER CONTROL)	
SCALE:	1" = 30'
DRAWING NO.	REV.
C-501	0



JL
1980
Architects, Engineers & Surveyors
JOHNSON, LASCHOBER & ASSOCIATES, P.C.
1000 W. PINEA, GA • MT. PLEASANT, SC
TEL: (706) 724-5756 • TEL: (843) 619-4656
FAX: (706) 724-3935
WWW.THEJLAGROUP.COM

CLIENT: AUGUSTA, GA
535 TELFAIR STREET, AUGUSTA, GA 30901

PROJECT NAME: **FIRE STATION #2**

PROJECT LOCATION: 928 TELFAIR ST., AUGUSTA, GA 30901



REV.	DATE	BY	DESCRIPTION
0	08/29/18	WTB	ISSUED FOR PERMITTING

This document is the property of Johnson, Laschober & Associates, P.C. The unauthorized reproduction, copying or otherwise use of this document is strictly prohibited and any infringement thereupon may be subject to legal action.