

POS SYSTEM NOTES:

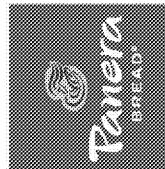
1. GC ELECTRICAL CONTRACTOR TO FURNISH AND INSTALL ALL POS SYSTEM RACEWAYS, CONDUITS AND JUNCTION BOXES FOR POS SYSTEM. PANERA TO PROVIDE WIRING AND TERMINATIONS. CONTACT 813-954-2455 AND PRESS 1, 2 OR 3 TO SPEAK TO A PANERA REPRESENTATIVE FOR ANY POS SPECIFIC OUTLET OR WIRING DETAILS.
2. PROVIDE 1-1/4" C WITH TWO UNSHIELDED CATEGORY 5E LINES FROM EACH CASE REGISTER TO EQUIPMENT BOARD IN OFFICE. ONE CAT-5E LINE FOR CASH REGISTER AND ONE FOR THE ATTACHED PRINTER. CONDUIT SHALL HAVE (2) RACEWAYS IN CASEWORK. UNDERFLOOR CONDUIT AND RACEWAYS BY E.C. RUN CONDUIT BELOW FLOOR OR IN CASEWORK TO NEAREST FULL HEIGHT PARTITION AS REQUIRED. RUN WIRING CONCEALED IN CABINETS/CASEWORK.
3. PROVIDE 1" CAT-5E SHIELDED CATEGORY 5E FROM EACH MONITOR OR PRINTER TO EQUIPMENT BOARD IN OFFICE. EACH MONITOR OR PRINTER TO HAVE (2) RJ-45 JACKS (IN CASEWORK) ALL UNDERFLOOR CONDUIT AND ROUGH-INS BY E.C. RUN CONDUIT BELOW FLOOR OR IN CASEWORK TO NEAREST FULL HEIGHT PARTITION AS REQUIRED. RUN WIRING CONCEALED IN CABINETS/CASEWORK.
4. REGISTER IN REAR SERVICE LINE SHOWN NEAR PHONE/FAX SHALL BE THE ROPE TERMINAL.
5. THE PHONE LINE TO CASEWORK FOR CREDIT CARD CONNECTION SHALL BE INSTALLED IN 1" CONDUIT TO ALLOW FOR FUTURE CAPACITY IF ADDITIONAL PHONE LINES ARE REQUIRED.
6. POS DATA LINES SHALL BE INSTALLED IN CONDUIT SEPARATE FROM ALL POWER CONDUCTORS.
7. COMMUNICATIONS CONTRACTOR MUST TEST ALL FEEDS FOR CONTINUITY AND LABEL ALL FEEDS.
8. ALL ROUGH-INS FOR EQUIPMENT @ CASEWORK TO BE PROVIDED IN FRONT RACEWAY OF CASEWORK. ALL ROUGH-INS FOR EQUIPMENT ON REAR SERVICE LINE TO BE @48" AFF UNLESS OTHERWISE NOTED.

OFFICE CABLING NOTES

- POS SYSTEM**
- (1) ALL DATA DROPS FOR REGISTERS AND PRINTERS WILL CONNECT INTO THE PATCH PANEL THROUGH THE CEILING. SEE POS SYSTEM DIAGRAM AND NOTES.
 - (2) ONE CABLE GOES FROM THE SWITCH TO THE PATCH PANEL
 - (3) PROVIDE CABLES TO MAKE RJ45 CONNECTIONS FROM MANAGER'S PC TO SWITCH
 - (4) PROVIDE CABLES TO MAKE RJ45 CONNECTIONS FROM MANAGER'S PC TO AT&T BIB
 - (5) NETWORK SWITCH WILL BE POWRED BY THE UPS (WHICH IS PLUGGED INTO THE OUTLET ABOVE IT)
- CCTV**
- (6) THIS WILL BE LOCATED AT THE TOP LEFT AREA.
 - (7) 17" FLAT PANEL MONITOR WILL BE HUNG ADJACENT WALL TO DESK, JUST IN FRONT OF THE SHELVING.
- ALARM SYSTEM**
- (8) THIS DEVICE CAN BE LOCATED ANYWHERE IN THE OFFICE. THE CONNECTION IS A CAT3 LINE HARDWIRED INTO THE PHONE SYSTEM AND A POWER OUTLET.
 - (9) IF STORES ARE PRE-WIRED, THE TECH MAY LEAVE THE LINE AT THE PHONE AREA TO PUNCH DOWN INTO THE SYSTEM.
- DMX/MUZAK**
- (10) LOCATED ON THE TOP SHELF OF THE RACK ON LEFT HAND SIDE.

ISSUE FOR REVIEW

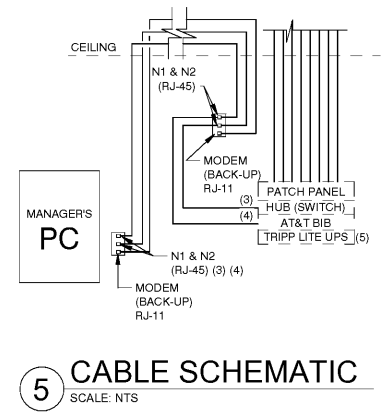
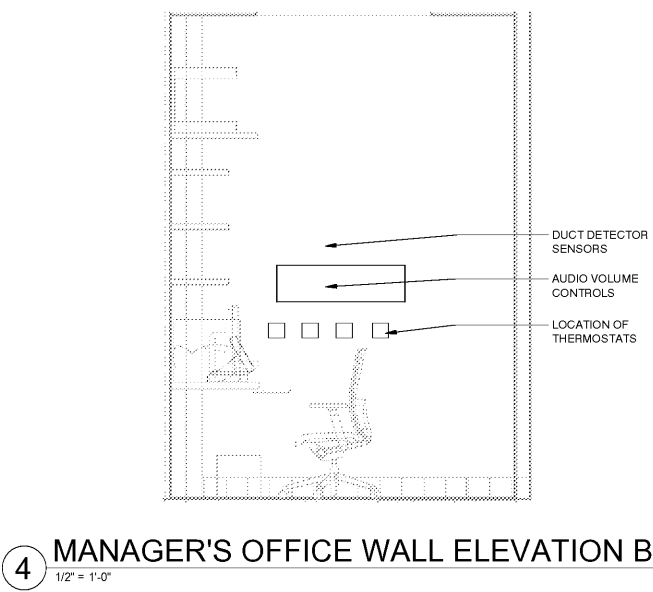
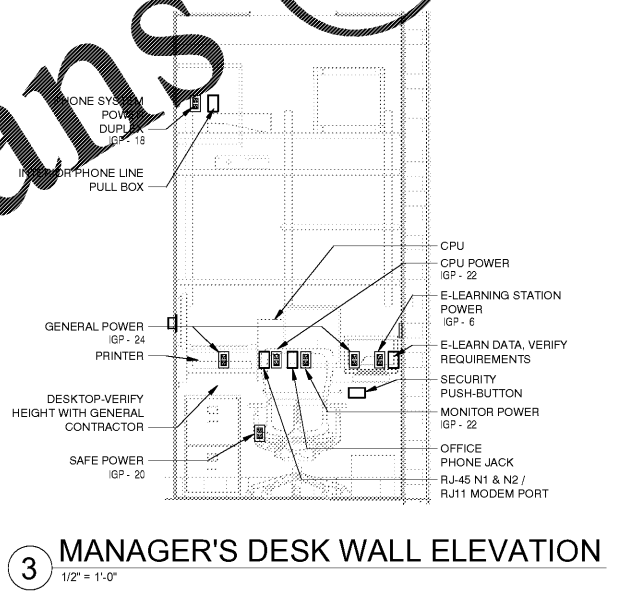
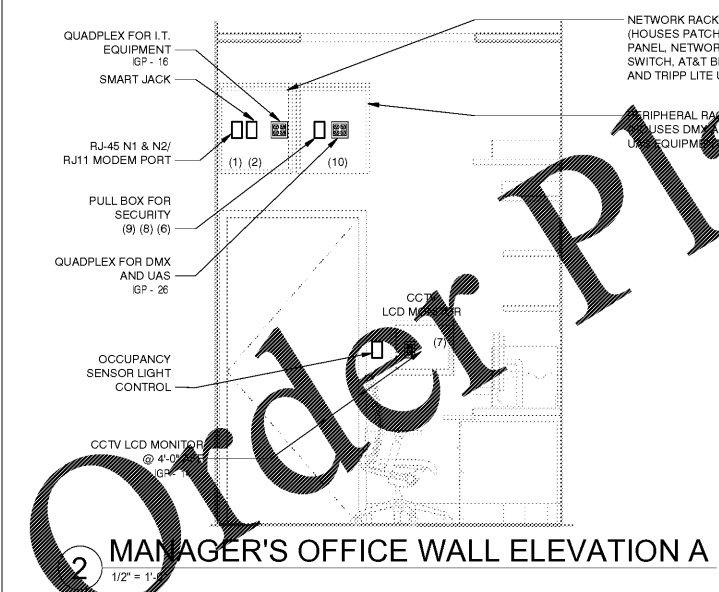
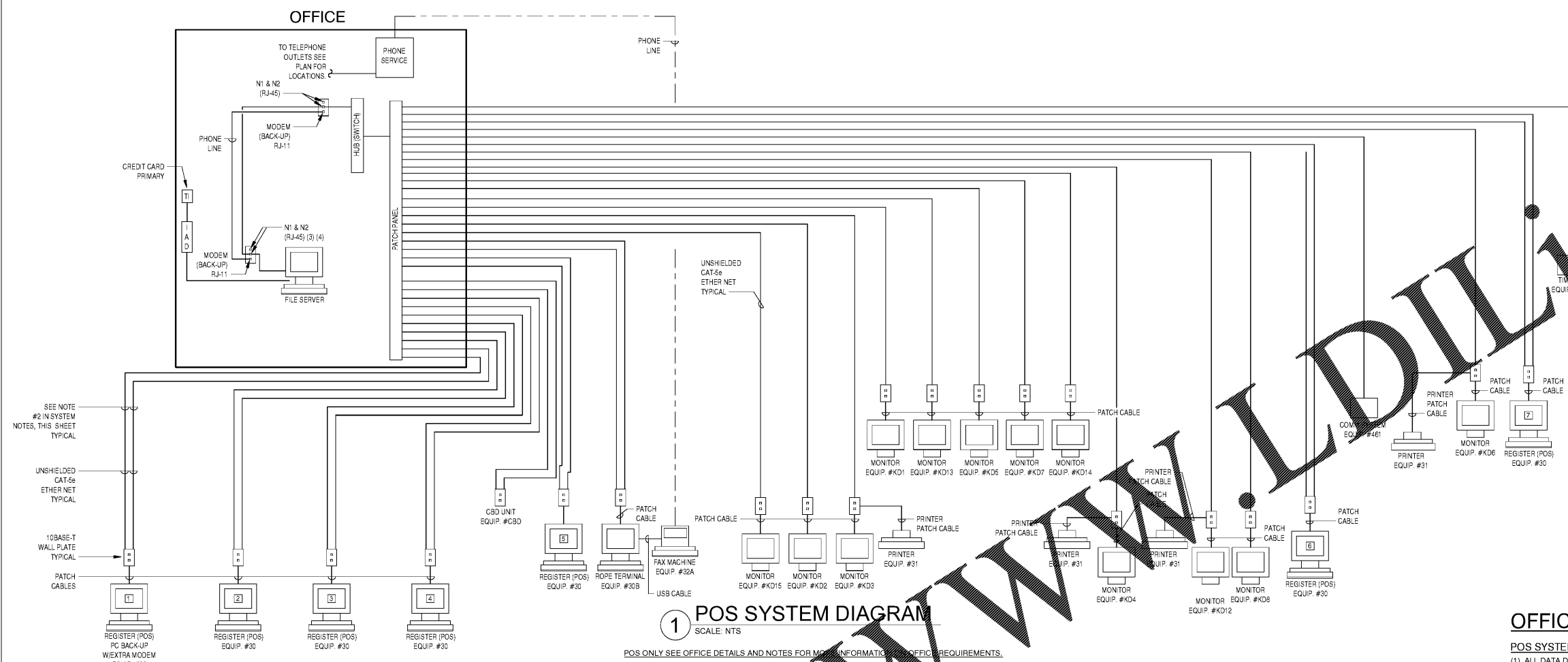
Bakery Cafe #6119
 6351 MANATEE AVE. W.,
 BRADENTON, FL 34209



NO.	DESCRIPTION	DATE

POS DIAGRAM AND NOTES

Project Number: _____ Sheet Number: _____
 Drawn: CJS Checked: NJD
 Issue Date: 10/01/18
 DPM: DM: CPM
 BS: DM: ME



WWW.DI.LINCO.COM

Order Plans @