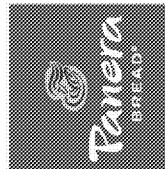


William J. Akers
383 Maplewood
St. Louis, MO 63119
Phone (314) 772-1192
Fax (314) 577-2524



Engineering Consultant

Bakery Cafe #6119
6351 MANATEE AVE. W,
BRADENTON, FL 34209



NO.	DESCRIPTION	DATE

ELECTRICAL LIGHTING PLAN

Project Number: 449-18
 Drawn: CJS
 Issue Date: 10/01/18
 DPM: BS
 Checked: NJD
 Date: 10/01/18
 DM: DM
 CPM: ME

E104

LP-1 DINING GENERAL LIGHTING "SW-a"	LP-1 DINING GENERAL LIGHTING "SW-b"	LP-3 DAYLIGHT ZONE LIGHTING "SW-c"	LP-14 DAYLIGHT ZONE LIGHTING "SW-d"
LP-14 GENERAL LIGHTING "SW-e"	LP-5 FOH TRACK LIGHTING "SW-f"	LP-2 SERVICE LINE LIGHTING "SW-g"	BAKERY AREA LIGHTING "SW-h"
LP-6 BOH LIGHTING "SW-j"	RESTROOM CORRIDOR "SW-k"		

SCHEDULE: LIGHTING CONTROL	
SYMBOL	DESCRIPTION
§	WALL MOUNTED TOGGLE SWITCH
§3	3-WAY WALL MOUNTED TOGGLE SWITCH
SD	SLIDING DIMMER SWITCH (LEVITON OR EQUAL)
SD	SIGNAGE DISCONNECT
⊙	OCCUPANCY SENSING CONTROL. VERIFY EQUIPMENT SPEC WITH ROOM LAYOUT AND OWNER IN FIELD. (LEVITON OR EQUAL)
⊙	CEILING MOUNTED MOTION SENSING CONTROL. VERIFY LOCATION WITH ROOM LAYOUT AND OWNER IN FIELD. LUTRON LOS-CDT-2000-WH
⊙	PHOTO SENSING CONTROL. VERIFY EQUIPMENT SPEC WITH SPACE LAYOUT AND OWNER IN FIELD.
— —	BRANCH CIRCUIT WIRING CONCEALED ABOVE CEILING OR IN PARTITION
— —	CIRCUIT HOME RUN
1	1 AMP CURRENT LIMITER
1.5	1.5 AMP CURRENT LIMITER

GENERAL NOTES LIGHTING

- INSTALL LIGHT FIXTURES IN ACCORDANCE WITH THE MANUFACTURER'S INSTRUCTIONS AND THE LATEST EDITION OF THE NEC.
- ALL WIRING SHALL BE COPPER, #12 THHN IN 3/4" CONDUIT UNLESS OTHERWISE NOTED.
- WHERE CONDUCTORS ARE NOT INDICATED (FOR CLARITY) INSTALL CONDUCTORS AS INDICATED BY THE CORRESPONDING HOMERUN.
- ALL FIXTURES TO BE PROVIDED BY, RECEIVED, STORED, AND INSTALLED BY THE ELECTRICAL CONTRACTOR. ALL FIXTURE LAMPS SHALL BE SUPPLIED AND INSTALLED BY THE ELECTRICAL CONTRACTOR.
- ELECTRICAL CONTRACTOR SHALL SUPPLY 10% ADDITIONAL SPARE LAMPS FOR ALL LAMP TYPES.
- 'NL' REFERS TO NIGHT LIGHT FIXTURE.
- ALL INTERIOR LIGHTING TO BE CONTROLLED VIA TIMECLOCK WITH A MASTER OVERRIDE SWITCH INSTALLED IN ACCORDANCE WITH THE 2009 IECC.
- EMERGENCY, NIGHT LIGHT, EXIT, AND REMOTE EMERGENCY LIGHTING TO BE CIRCUITED TO LOCAL LIGHTING CIRCUIT AHEAD OF ANY SWITCHING OR CONTROLS WHERE ALLOWED BY CODE. EMERGENCY LIGHTING ALSO USED AS GENERAL LIGHTING SHALL BE CIRCUITED THROUGH THE ASSOCIATED CONTROLS PER PLAN. WIRE PER MANUFACTURER INSTRUCTION TO RETAIN EMERGENCY FUNCTION REGARDLESS OF THE SWITCH POSITION.

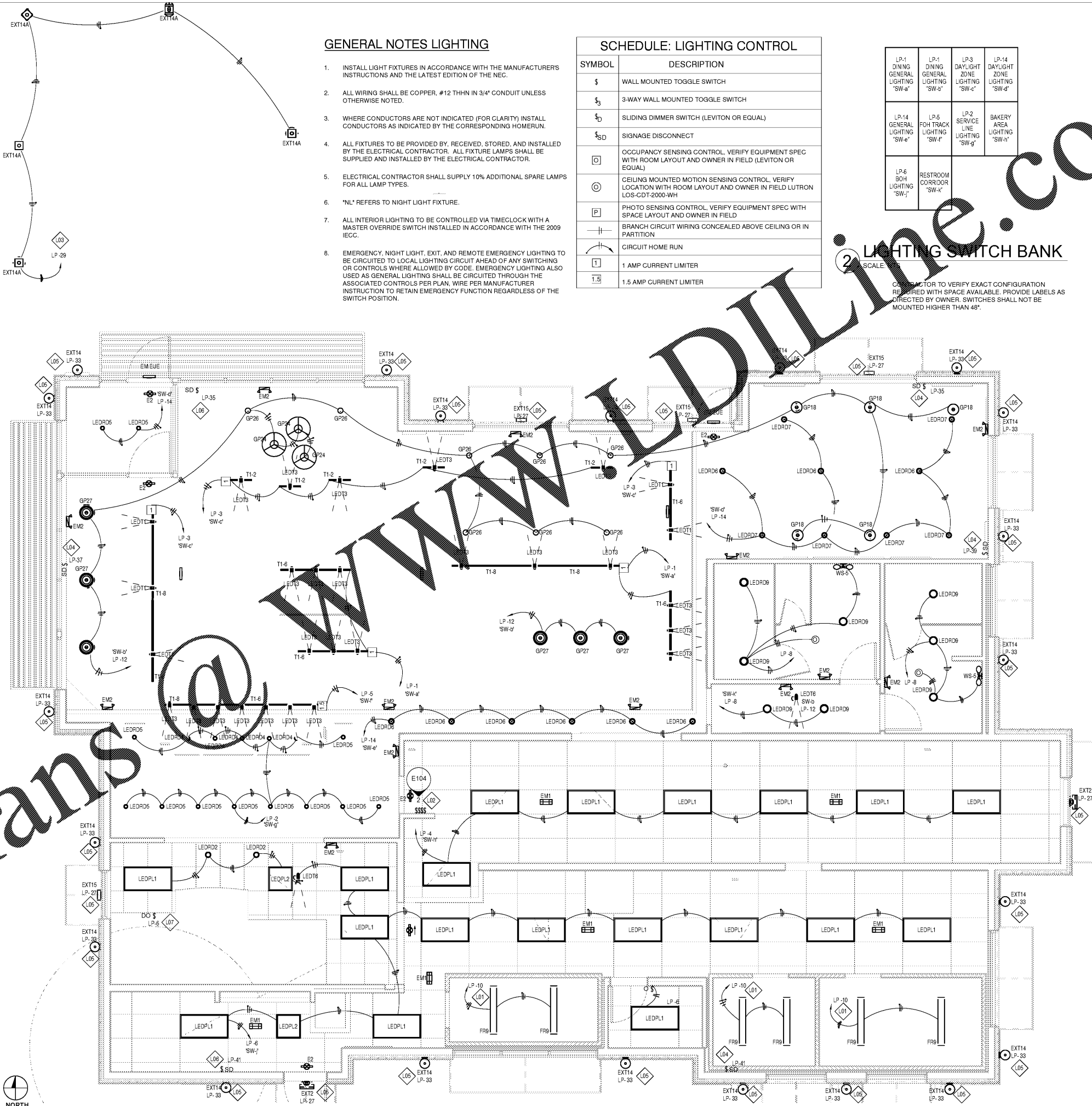
NOTE:
 ALL FIXTURES (NO EXCEPTIONS) TO BE OBTAINED THROUGH NATIONAL ACCOUNT AT:
 STANDARD ELECTRICAL SUPPLY COMPANY
 #14 JEWEL DRIVE
 WILMINGTON, MA 01887
 CONTACT PANERA ACCOUNT REPRESENTATIVE 800-370-5050 X3176
 -OR-
 CITY LIGHTING
 4307 WEST PAPER STREET
 ST. LOUIS, MO 63110
 CONTACT: MIKE GANTY 314-534-1090

NOTE:
 SEE SHEET A212 FOR LIGHT FIXTURE SCHEDULE AND SHEET A201 FOR ADDITIONAL INFORMATION ON FIXTURE LOCATIONS. CONTRACTOR SHALL ALSO BE RESPONSIBLE FOR REVIEWING ARCHITECTURAL ELEVATIONS FOR ANY ADDITIONAL POWER REQUIREMENTS INCLUDING SIGNS AND BUILDING LIGHTING PROVIDED AS PART OF THE PANERA BUILD OUT.

ALL LIGHTING FIXTURE BULBS SHALL HAVE PROTECTIVE COVERS, BE COATED OR SHATTER-RESISTANT IN AREAS WHERE THERE IS NON-PREPACKAGED READY TO EAT FOOD, CLEAN EQUIPMENT, UTENSILS, LINENS OR UNWRAPPED SINGLE USE ARTICLES, FOOD PREPARATION AREAS, OPENED FOOD STORAGE ROOMS, AND DISHWASHING AREAS.

L# LIGHTING PLAN KEYED NOTES

- COORDINATE CONNECTION OF COOLER/FREEZER LIGHTING WITH COOLER/FREEZER EQUIPMENT SUPPLIER AND CONTRACTOR. MANUFACTURER PROVIDES FIXTURE. CONTRACTOR PROVIDES LOW TEMP BALLAST.
- APPROXIMATE LOCATION OF SWITCH-BANK. SEE DETAIL THIS SHEET. COORDINATE EXACT LOCATION AND SWITCH CONFIGURATION WITH OWNER.
- VERIFY CONNECTION REQUIRED AND LOCATIONS FOR ALL PATIO LIGHTING IN FIELD WITH OWNER AND FIELD CONDITIONS. SEE ARCHITECTURAL PLANS FOR MORE INFORMATION. CIRCUIT VIA LIGHTING CONTRACTOR AND TIMECLOCK IN CPI AND PHOTOCELL.
- PROVIDE DISCONNECT SWITCHES AND JUNCTION BOXES, ON ROOF, AS REQUIRED FOR SIGNS. SIGNAGE CONSISTS OF ONE INDIVIDUALLY LETTERED "PANERA" SIGN AND ONE INDIVIDUALLY LETTERED "BREAD" SIGN. SEE ARCHITECTURAL SIGN DRAWINGS. VERIFY ALL DETAILS PRIOR TO ROUGH-IN. CIRCUIT VIA LIGHTING CONTRACTOR AND TIME CLOCK FURNISHED WITH CPI PANEL. COORDINATE WITH CPI REPRESENTATIVE.
- CIRCUIT VIA LIGHTING CONTRACTOR AND TIME CLOCK FURNISHED WITH CPI PANEL. COORDINATE WITH CPI REPRESENTATIVE.
- PROVIDE JUNCTION BOX FOR DRIVE-THRU SIGN. VERIFY REQUIREMENTS AND DETAILS BEFORE ROUGH-IN. CIRCUIT VIA LIGHTING CONTRACTOR AND TIME CLOCK FURNISHED WITH CPI PANEL. COORDINATE WITH CPI REPRESENTATIVE.
- SWITCH DECK OVEN HOOD LIGHTING SO THAT LIGHTS IN HOOD CAN BE ON WHEN KITCHEN LIGHTS ARE OFF. LOCATE SWITCH ON INSIDE OF HOOD WHERE POSSIBLE. WHEN NOT ALLOWED BY LOCAL JURISDICTION LOCATE SWITCH WITH FIELD INSPECTOR.



1 LIGHTING PLAN
 1/4" = 1'-0"
 NORTH

Order Plans @ WWW.DLINE.COM