

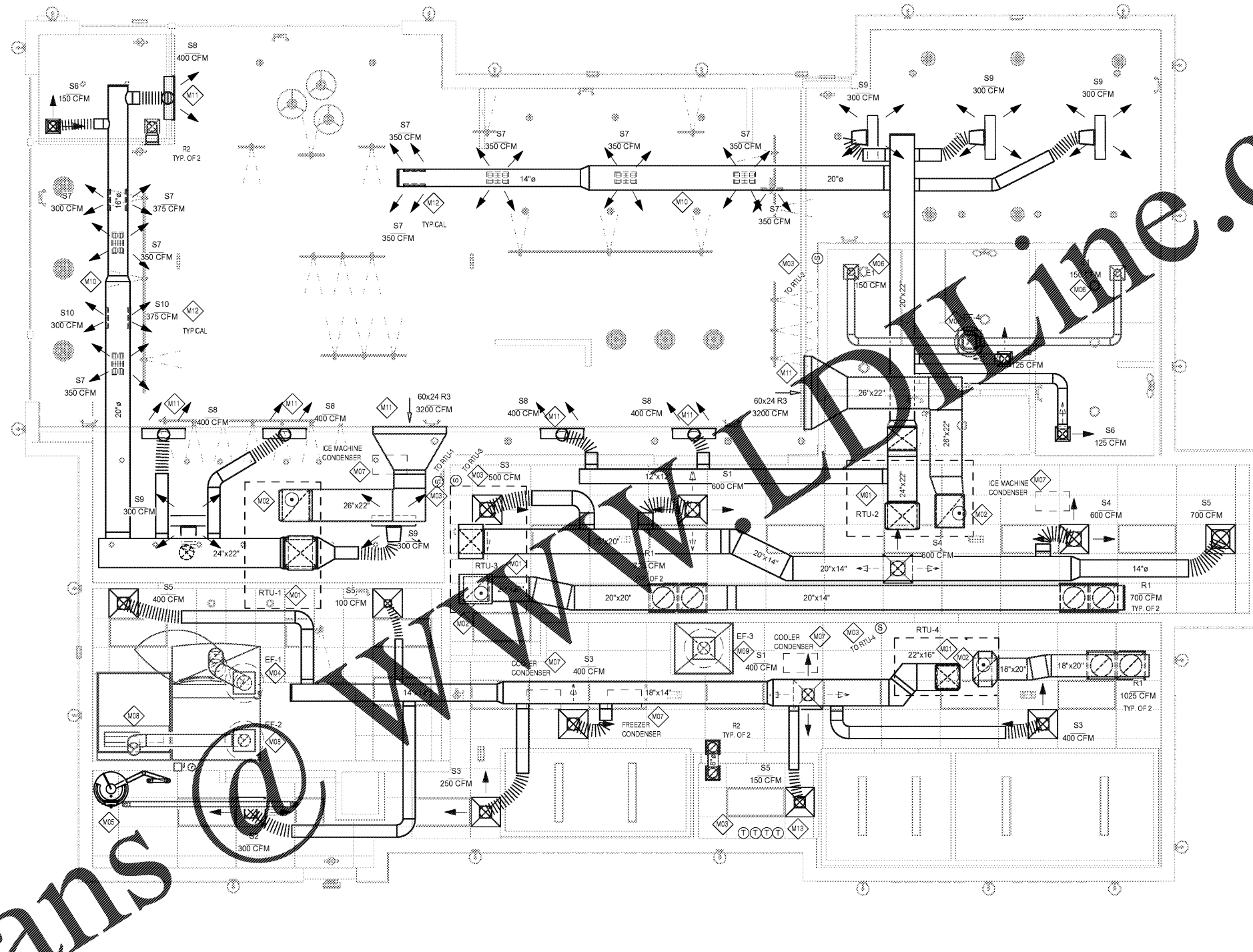
Engineering Consultant

GENERAL NOTES HVAC

1. THE CONTRACTOR SHALL COORDINATE WITH ALL OTHER TRADES IN LOCATING DUCTWORK, PIPING AND EQUIPMENT TO AVOID ANY INTERFERENCE.
2. COORDINATE INSTALLATION OF NEW DUCT WITH STRUCTURE.
3. CONTRACTOR TO INSTALL ALL WORK IN STRICT COMPLIANCE WITH LOCAL CODES AND/OR ORDINANCES.
4. MECHANICAL CONTRACTOR SHALL SUBMIT SHOP DRAWINGS AND EQUIPMENT SUBMITTAL PRIOR TO INSTALLING OR FABRICATING ANY DUCTWORK.
5. PAINT INSIDE OF DIFFUSERS BLACK TO MINIMIZE VIEWING OF DUST AND DIRT.
6. PROVIDE FIBERGLASS INSULATION BLANKET ABOVE TOPS OF ALL SUPPLY AIR DIFFUSERS.
7. PROVIDE ADJUSTABLE VOLUME DAMPER AT ALL BRANCH DUCTWORK.
8. PROVIDE TURNING VANES AT ALL ELBOWS (TYPICAL).
9. MECHANICAL CONTRACTOR TO REPLACE FILTERS UPON COMPLETION OF CONSTRUCTION.
10. REFER TO GENERAL CONDITIONS ON SHEET G-SHEET FOR FIRE STOPPING REQUIREMENTS.
11. REFER TO THE OVEN HEAD DETAIL ON SHEET A302 FOR OVEN/PROOFER ACCESS PANEL AND STAINLESS STEEL ENCLOSURE INFORMATION.
12. ALL TYPE II EXHAUST DUCT MUST BE RIGID METALLIC (PER SMACNA HVAC DUCT CONSTRUCTIONS STANDARDS).

M# MECHANICAL KEYED NOTES

- M01 PROVIDE AND INSTALL NEW ROOFTOP UNIT AS SHOWN IN SCHEDULE ON SHEET M201. UNIT SHALL BE LOCATED SUCH THAT SUPPLY AND RETURN DUCTWORK DROP BETWEEN JOISTS. RUN CONDENSATE LINE TO NEAREST SANITARY. SEE PLUMBING DRAWING. THIS SET FOR DETAILS. VERIFY OUTSIDE AIR INTAKE IS A MINIMUM OF 10' FROM ANY EXHAUST OR FLUE.
- M02 PROVIDE AND INSTALL U.L. LISTED IONIZATION TYPE SMOKE DETECTOR INTERLOCKED WITH RTU CONTROLS TO SHUT RTU DOWN UPON ACTIVATION OF DETECTOR. LOCATE IN RETURN AIR DUCTWORK(S). PROVIDE WITH ACCESS DOOR.
- M03 PROVIDE TWO PIECE THERMOSTAT WITH WALL MOUNTED SENSOR AND CONTROLLER MOUNTED IN MANAGER'S OFFICE. COORDINATE LOCATIONS WITH OTHER ELEMENTS OF WALL / COLUMN. VERIFY EXACT LOCATIONS IN FIELD. T-STAT WIRING SHALL ROUTE THRU CPI PANEL. COORDINATE EXACT REQUIREMENTS WITH CPI REPRESENTATIVE. DO NOT LOCATE SENSOR ON WALL TILE.
- M04 MANUFACTURER INSTALLED TYPE-II HOOD FOR RACK OVEN. EXTEND NEW 12"Ø B-TYPE W/ ALUMINUM OR STAINLESS STEEL LINER EXHAUST DUCT PER MANUFACTURER'S RECOMMENDATIONS FROM HOOD COLLAR OUTLET UP TO EF-1 ON ROOF. FAN SHALL BE INTERLOCKED WITH OVEN SUCH THAT FAN ONLY RUNS WHEN OVEN IS ON. SEE FAN SCHEDULE ON SHEET M-201 AND OVEN DETAILS ON SHEETS M301 AND M401. FAN IS PURCHASED BY OWNER AND INSTALLED BY CONTRACTOR. BALANCE EF-1 TO 900 CFM. INSTALL ALL COMPONENTS IN STRICT COMPLIANCE WITH LOCAL CODES PER MANUFACTURER'S RECOMMENDATIONS. LOCATE FAN OUTLET 10' MIN. FROM ANY AIR INTAKE.
- M05 DIRECT VENT CLOSED COMBUSTION FLUE FROM WATER HEATER UP THROUGH ROOF. TERMINATE PER MANUFACTURER'S RECOMMENDATIONS. KEEP FLUE OUTLET MINIMUM 10 FEET FROM ANY AIR INTAKE. VERIFY LOCATION. SEE DETAIL SHEET M401.
- M06 EXTEND 10" DIAMETER EXHAUST DUCT DOWN FROM EXHAUST FAN EF-4 ON ROOF AND CONNECT TO EXHAUST GRILLES IN TOILET ROOM. BALANCE AS INDICATED. PROVIDE BACKDRAFT DAMPER AT EACH GRILLE. SEE SCHEDULE ON SHEET M201. AND DETAIL ON SHEET M401.
- M07 REMOVE CONDENSERS ON ROOF FOR FREEZER, COOLER, AND ICE MACHINES. TAKE OFF FOR PIPING RUNS TO BE COORDINATED WITH GENERAL CONTRACTOR. G.C. TO RUN WIRING FOR COOLERS AND FREEZER AND FOR REMOTE COMPRESSORS. MECHANICAL/ELECTRICAL SUBCONTRACTOR TO PERFORM FINAL CONNECTION FOR THESE UNITS. COORDINATE LOCATION WITH OWNER. FOR BIDDING PURPOSES REFRIGERATION PIPING COMES IN PRE CHARGED LENGTHS OF 25 ft AND 50 ft. (COOLER AND FREEZER ONLY). PROVIDE ALUMA STAND OR EQUAL FOR ALL CONDENSERS (SEE A-10).
- M08 DECK OVEN TYPE-II HOOD BY "CAPTIVE-AIRE". EXTEND NEW 10" DIAMETER EXHAUST DUCT FROM EXHAUST COLLAR ON HOOD TO EF-2 ON ROOF. FAN SHALL BE CONTROLLED BY SWITCH MOUNTED ON HOOD. LOCATE FAN OUTLET A MINIMUM OF 10' FROM ANY AIR INTAKE. DECK OVEN HOOD AND FAN ARE PURCHASED BY OWNER FROM "CAPTIVE-AIRE" AND INSTALLED BY CONTRACTOR. SEE SHEET M302 FOR DECK OVEN VENTILATION INFORMATION.
- M09 DISHWASHER TYPE - II HOOD BY "CAPTIVE-AIRE". INSTALL NEW 10" DIAMETER EXHAUST DUCT (22 Ga. STAINLESS STEEL OR ALUMINUM) FROM EXHAUST COLLAR ON HOOD TO EF-3 ON ROOF. SEE SHEET E502 FOR WIRING INTERCONNECTION DIAGRAM. SUCH THAT FAN ONLY RUNS WHEN DISHWASHER IS ON. LOCATE FAN OUTLET A MINIMUM OF 10' FROM ANY AIR INTAKE. DISHWASHER HOOD AND FAN ARE PURCHASED BY OWNER FROM "CAPTIVE-AIRE" AND INSTALLED BY CONTRACTOR. SEE SHEET M303 FOR DISHWASHER VENTILATION INFORMATION.
- M10 EXPOSED SPIRAL AIR DUCT. COORDINATE RUN-OUTS WITH STRUCTURE. LOCATE TIGHT TO THE BOTTOM OF THE ROOF TRUSSES. SEE DETAIL ON SHEET M401.
- M11 WALL MOUNTED SUPPLY (ADJUST ACCORDINGLY BASED ON AREA SERVED WITH MAXIMUM THROW DISTANCE) RETURN AIR GRILLE(S). COORDINATE EXACT LOCATION IN FIELD WITH OWNER REPRESENTATIVE. PAINT AS REQUIRED. COORDINATE COLOR WITH ARCHITECT'S.
- M12 DUCT MOUNTED SUPPLY DIFFUSER WITH DOUBLE DEFLECTION BLADES (TYPICAL) ADJUST ACCORDINGLY BASED ON AREA SERVED WITH MAXIMUM THROW DISTANCE. PROVIDE WITH OPTIONAL ASD (AIR SCOOP DAMPER) FOR VOLUME ADJUSTMENTS.
- M13 PRECUT GRILLE TO MATCH LAY-IN CEILING GRID.



1 MECHANICAL FLOOR PLAN
1/4" = 1'-0"
NORTH

NOTE:
LOCATE ROOF MOUNTED EQUIPMENT 10' MINIMUM FROM ROOF EDGE IF PARAPET HEIGHT IS LOWER THAN MINIMUM REQUIRED PER LOCAL CODE AND ORDINANCE FOR SERVICE AND MAINTENANCE.

CONTACT MELINK CORP
(PANERA@MELINKCORP.COM or CALL MELINK AT 513.965.7300) FOR TESTING AND BALANCING OF HVAC SYSTEM, OR ANY OTHER APPROVED AABC OR NEBB CERTIFIED AGENCIES. THE REPORT SHALL BE AVAILABLE ON JOB SITE PRIOR TO FINAL INSPECTION.

ISSUE FOR REVIEW

Bakery Cafe #6119
6351 MANATEE AVE. W,
BRADENTON, FL 34209



NO.	DESCRIPTION	DATE

MECHANICAL PLAN	
Project Number:	Sheet Number:
449-18	M101
Drawn: MG	Checked: DMC
Issue Date: 10/01/18	
DPW: DM	CFM
BS: DM	ME

Order Plans