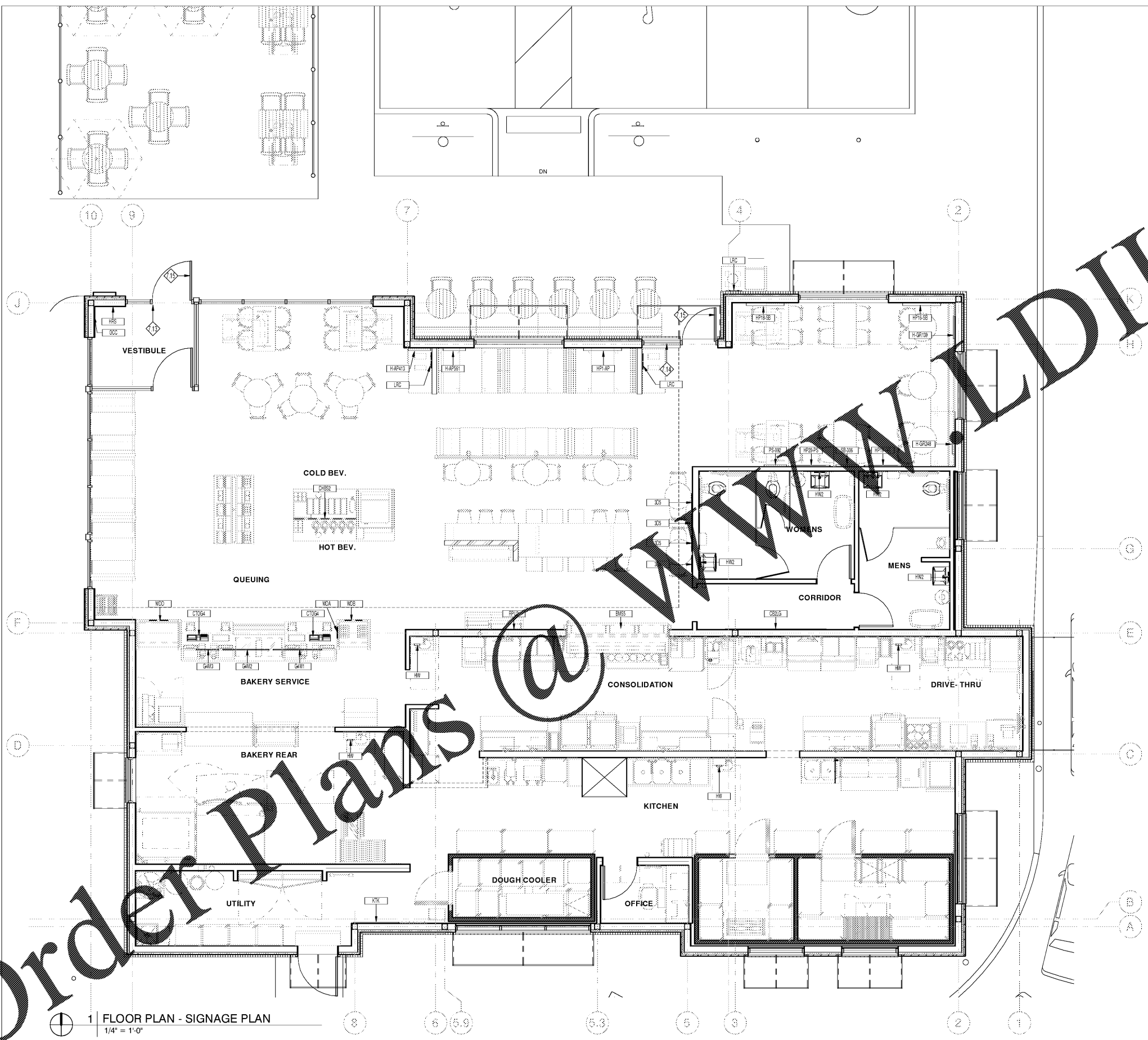


11/1/2018 3:27:45 PM



KEYED NOTES

7.13 LOCATION OF EXIT SIGN AND SIGN STATING "THIS DOOR TO REMAIN UNLOCKED WHEN BUILDING IS OCCUPIED".

7.14 LOCATION OF TACTILE EXIT SIGN, REFER TO A721.

7.15 LOCATION OF INTERNATIONAL SYMBOL OF ACCESSIBILITY.

PLAN SYMBOL LEGEND

- XXXXX — SIGNAGE IDENTIFICATION SYMBOL
- XXXX — EQUIPMENT IDENTIFICATION SYMBOL
- STXXXX — STEEL IDENTIFICATION SYMBOL
- WXXXX — WOOD IDENTIFICATION SYMBOL
- REL — RELOCATION INDICATION, ACCESS TO SYMBOLS
- XXXX — FURNITURE IDENTIFICATION SYMBOL
- ?

GENERAL NOTES:

A. ALL SIGNS WILL BE PROVIDED BY OWNER TO G.C. FOR INSTALLATION.

B. VENDOR TO VERIFY ALL QUANTITIES AND CURRENT GRAPHIC DESIGNS WITH OWNER PRIOR TO FABRICATING.

C. REFERENCE SHEET A410 FOR SIGNAGE LOCATIONS/ELEVATIONS.

Bakery-Cafe: **#6119**

SYSTEM: G4 (A721)

Project Title:

whooops.com

p.o. box 14,2116
coral gables, florida
33114,2116
v. 305.445.3100
f. 305.259.3986
license number: AA2602436

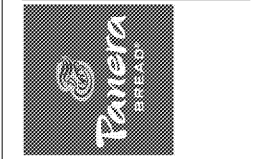
Professional Seal:

architect of record: William F. Arthur
License Number: AR0012074

Project Title:

CONSTRUCTION DRAWINGS

Bakery Cafe #6119
6351 MANATEE AVE W,
BRADENTON, FL 34209



These plans and specifications are the exclusive property of WFA Design. Any reproduction, modification, distribution, and/or use of these materials (or any portion thereof) without WFA Design's prior written consent is strictly prohibited.

No.	Description	Date

ARTWORK & GRAPHICS PLAN

Project Number: #6119
Sheet Number: **A720**

Drawn By: MMH/NH
Issue Date: 09.30.18

DFM: DM: CPM:
J.R.: D.C.: R.K.:

Order Plans @

1 FLOOR PLAN - SIGNAGE PLAN
1/4" = 1'-0"