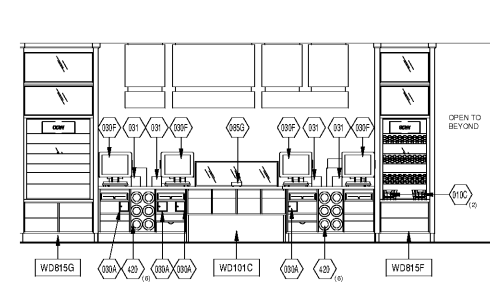
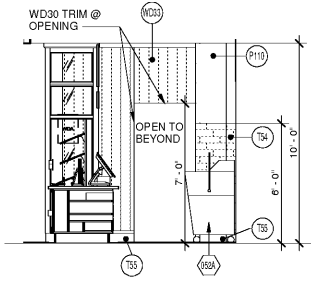


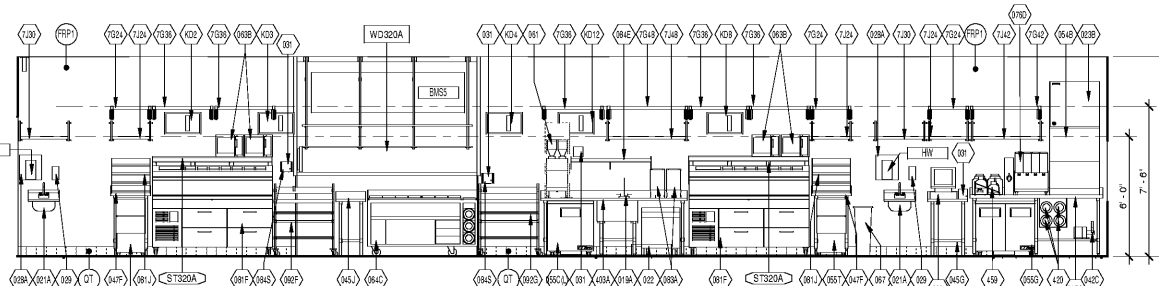
11/11/2018 8:56:02 AM



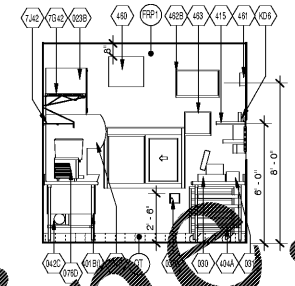
1 BAKERY SERVICE ELEVATION
1/4" = 1'-0"



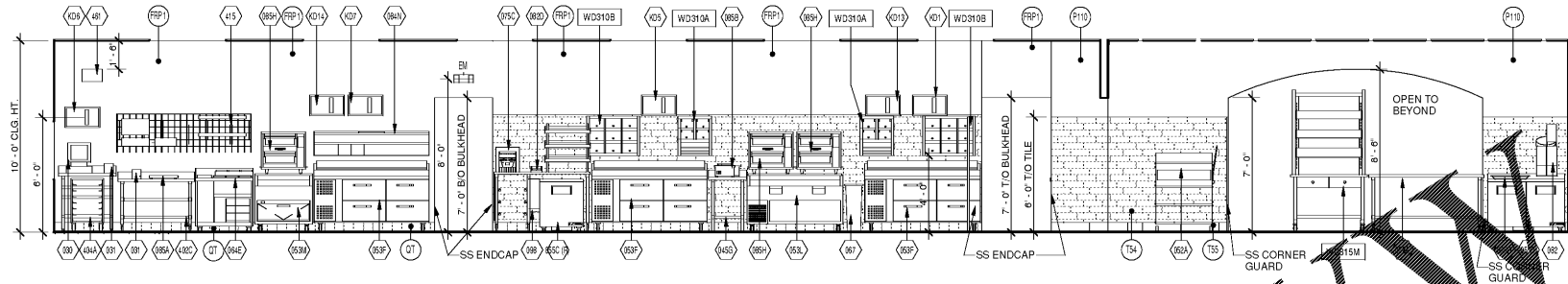
2 BAKERY REAR
1/4" = 1'-0"



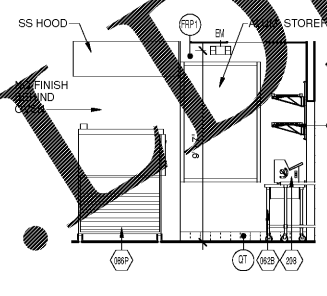
3 CONSOLIDATION FRONT WALL ELEVATION
1/4" = 1'-0"



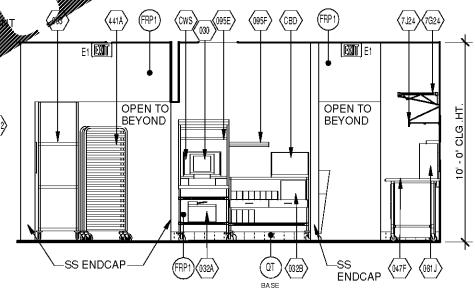
4 DRIVE THRU ELEVATION
1/4" = 1'-0"



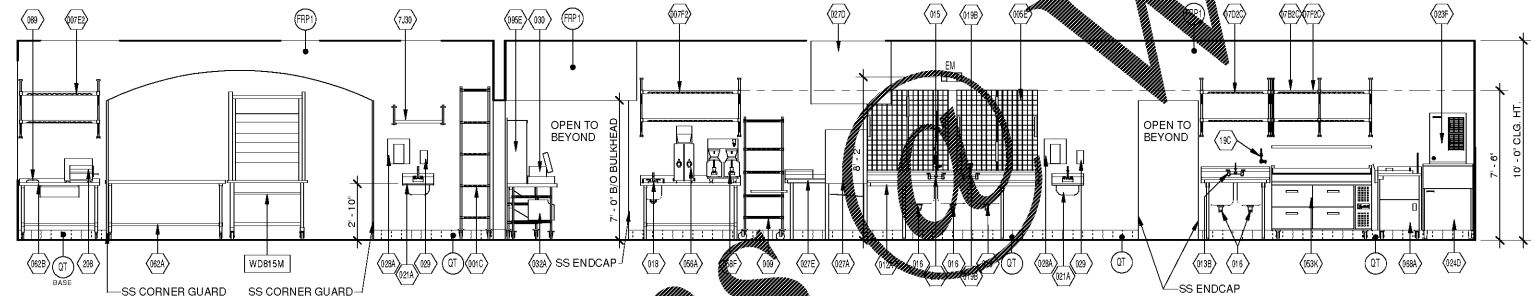
5 CONSOLIDATION REAR WALL / BAKERY SERVICE ELEVATION
1/4" = 1'-0"



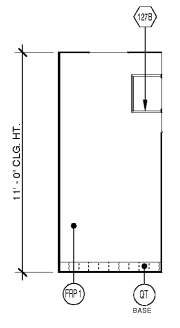
6 BAKERY REAR ELEVATION
1/4" = 1'-0"



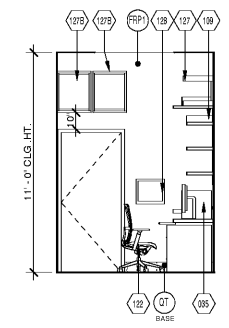
7 CONSOLIDATION ELEV.
1/4" = 1'-0"



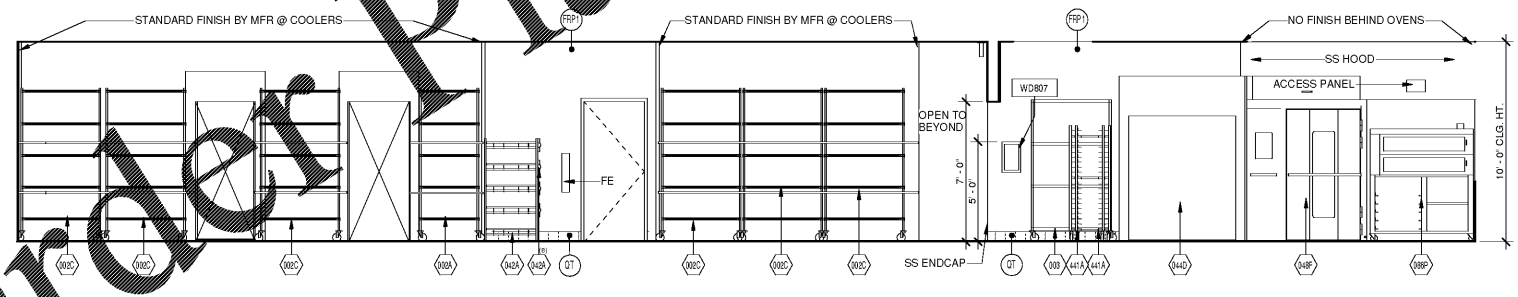
8 BOH ELEVATION
1/4" = 1'-0"



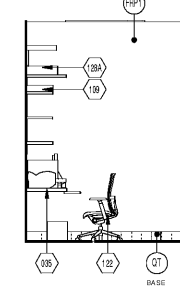
9 OFFICE
1/4" = 1'-0"



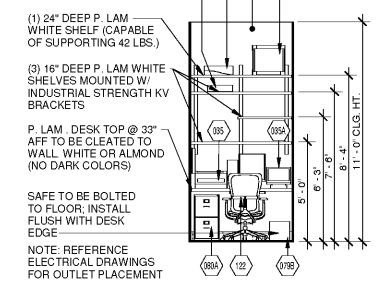
10 OFFICE
1/4" = 1'-0"



11 BOH ELEVATION
1/4" = 1'-0"



12 OFFICE
1/4" = 1'-0"



13 OFFICE
1/4" = 1'-0"

(1) 24" DEEP P. LAM WHITE SHELF (CAPABLE OF SUPPORTING 42 LBS.)

(3) 16" DEEP P. LAM WHITE SHELVES MOUNTED W/ INDUSTRIAL STRENGTH KV BRACKETS

P. LAM. DESK TOP @ 33" AFF TO BE CLEARED TO WALL WHITE OR ALMOND (NO DARK COLORS)

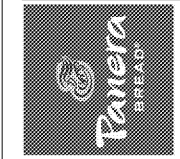
SAFE TO BE BOLTED TO FLOOR. INSTALL FLUSH WITH DESK EDGE

NOTE: REFERENCE ELECTRICAL DRAWINGS FOR OUTLET PLACEMENT

Bakery-Cafe:
#6119
SYSTEM: G4 (A) (1)
Project:
p.o. box 14,2116
coral gables, florida
33114,2116
v. 305.445.3100
f. 305.259.3986
license number: AA26002436

Professional Seal:
architect of record: William F. Arthur
License Number: AR0012074
Project Title:

CONSTRUCTION DRAWINGS
Bakery Cafe #6119
6351 MANATEE AVE W,
BRADENTON, FL 34209



These plans and specifications are the exclusive property of WFA Design. Any reproduction, modification, distribution, and/or use of these materials (or any portion thereof) without WFA Design's prior written consent is strictly prohibited.

No.	Description	Date

INTERIOR ELEVATIONS BACK OF HOUSE

Project Number: #6119
Sheet Number: **A420**
Drawn By: MMH/NH
Issue Date: 09.30.18
DPM: DM: CPM:
J.R. D.C. R.K.

Order Plans @ WWW.WADILLING.COM